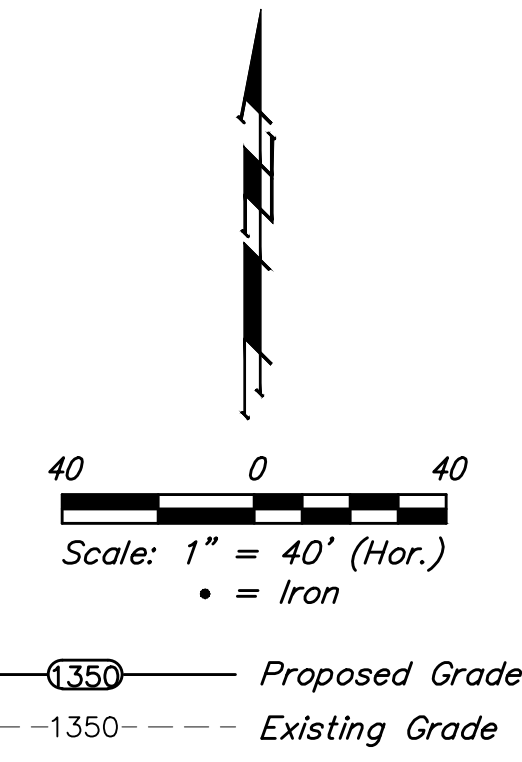


BENCHMARKS:

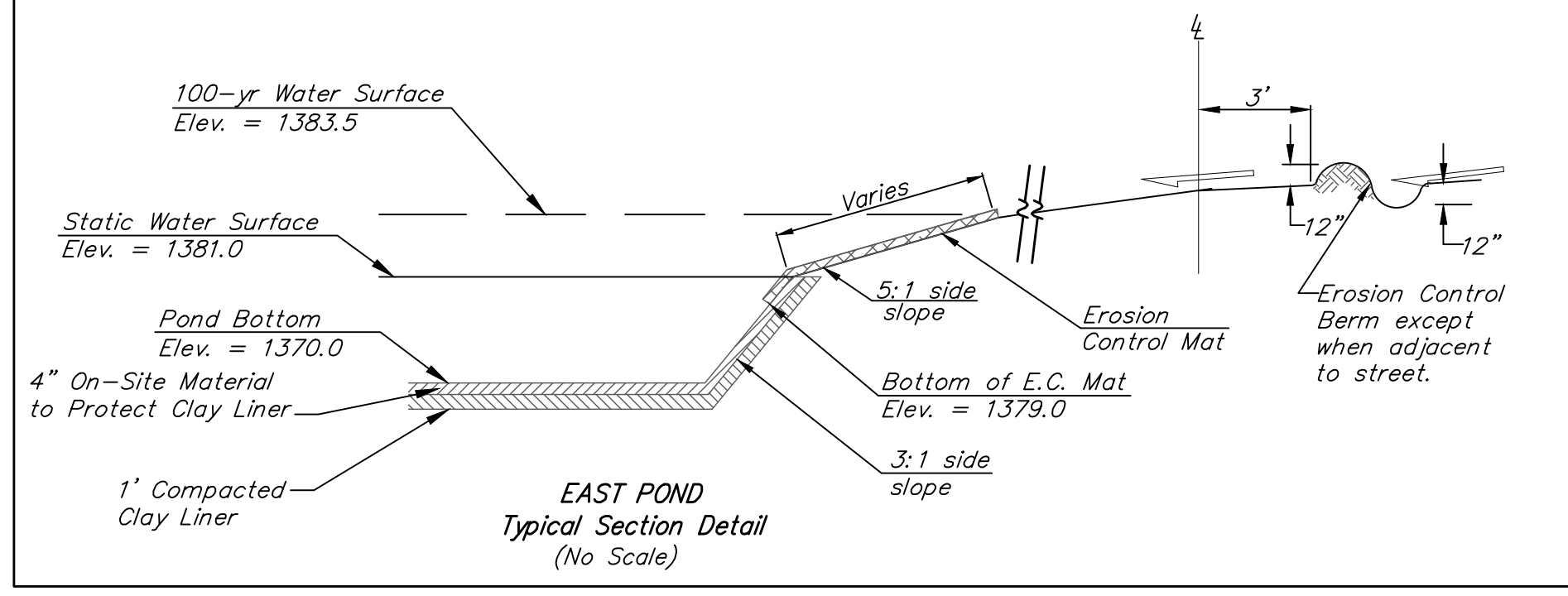
#1: "□" CUT CHISELED ON CURB,
15.2' S. OF SW COR., LOT 6,
BLOCK A, ROCKY FORD 2ND
ADDITION.
ELEV. = 1385.10 NAVD88

#2: "□" CUT CHISELED ON CURB,
8.6' N. & 11.7' W. OF SW COR.,
LOT 14, BLOCK C, ROCKY FORD
2ND ADDITION.
ELEV. = 1380.11 NAVD88



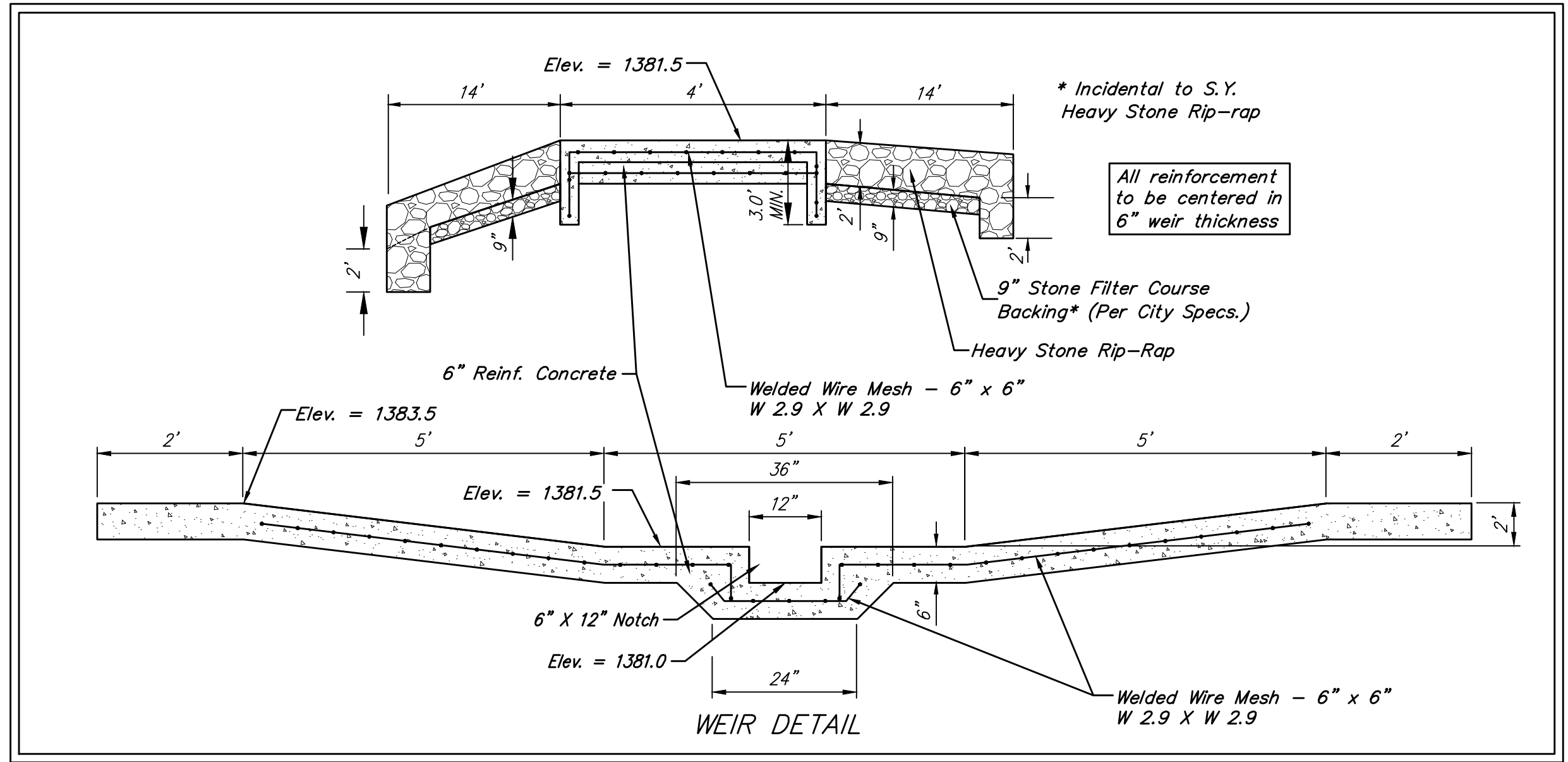
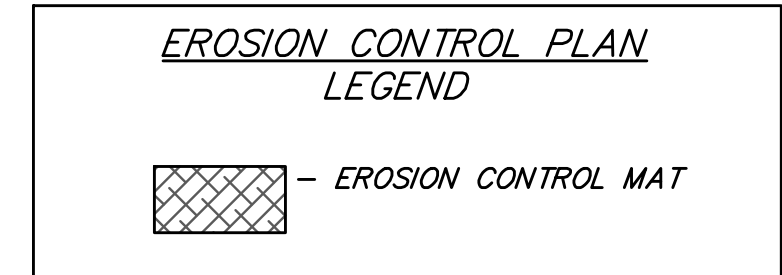
Install 3,141 S.Y. North American Green Bionet S150BN Biodegradable Erosion Control Mat, or approved equal around pond as indicated (See Detail, This Sheet) Erosion control mat shall be installed and anchored per manufacturer's specifications. All cost of matting shall be included in S.Y. "Erosion Control Mat". Note: This quantity is for information only and does not include excess material necessary for overlap and anchoring.

POND DATA:
STATIC POOL ELEVATION: 1381.0
PROPOSED BOTTOM ELEVATION: 1373.0
100-YR ELEVATION: 1383.5



EARTH WORK TOTALS (CY, Unadjusted)
*for information only

	Excavation	Fill
West Pond	24,300	0
East Pond	55,560	340
Mass Grading	40,540	110,220
Total Mass Grading	120,400	110,220



Construct 4'x19' Reinforced Conc. Wier w/ 30 S.Y. Heavy Stone Rip-rap (each side) as Indicated.

Baughman R.F. Addition
EAST POND
Stormwater Drain Improvements

Baughman Company, P.A. 315 Ellis St. Wichita, KS 67211 P 316-262-7271 F 316-262-0149
ENGINEERING | SURVEYING | PLANNING | LANDSCAPE ARCHITECTURE

PROJECT NUMBER 468-2019-085421	DESIGN AEG	DRAWN HW
REVISIONS:	APPROVED	DATE 04/13/20
	SCALE Noted	SHEET 16 OF 28

C:\Projects\R.F. Addition_1802-P337\Engineering\Phase 1\SWD\Mass Grade.dwg