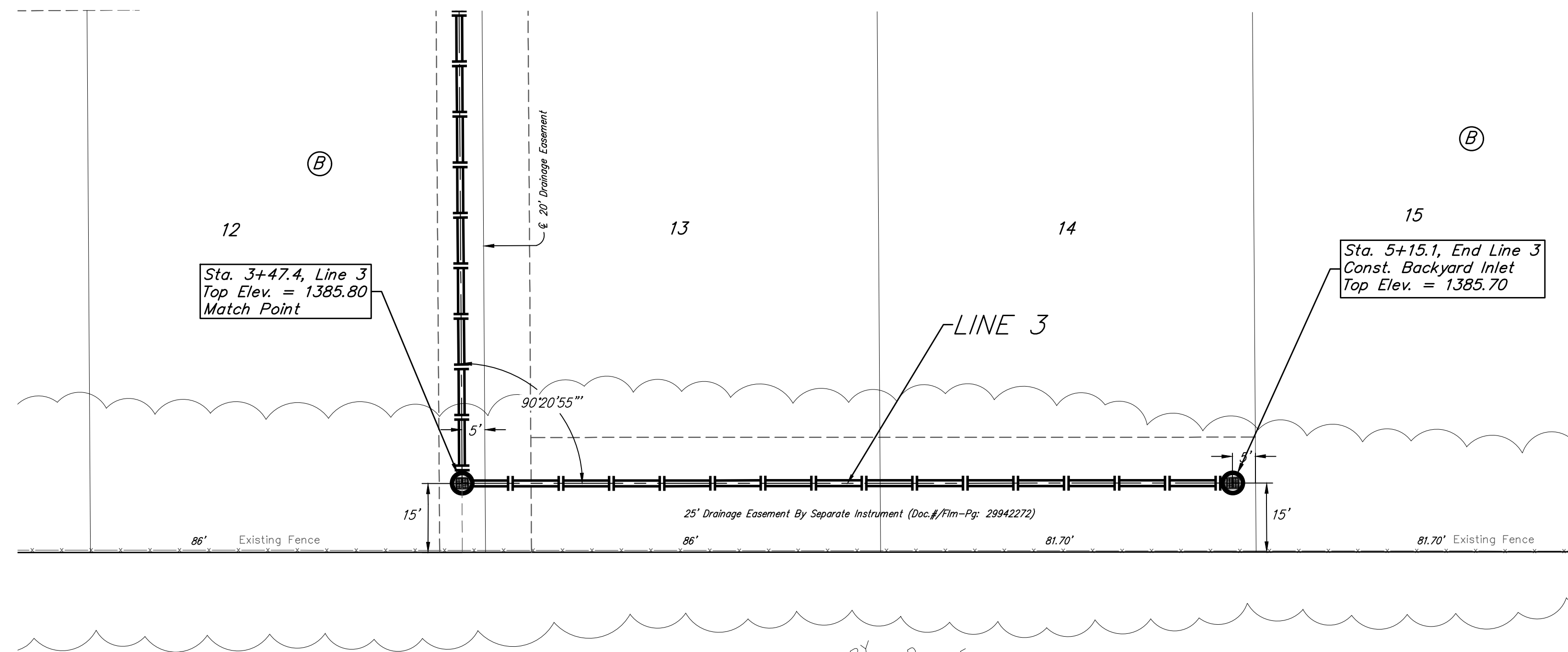


**BENCHMARKS:**

#1: "□" CUT CHISELED ON CURB,  
15.2' S. OF SW COR., LOT 6,  
BLOCK A, ROCKY FORD 2ND  
ADDITION.  
ELEV. = 1385.10 NAVD88

#2: "□" CUT CHISELED ON CURB,  
8.6' N. & 11.7' W. OF SW COR.,  
LOT 14, BLOCK C, ROCKY FORD  
2ND ADDITION.  
ELEV. = 1380.11 NAVD88

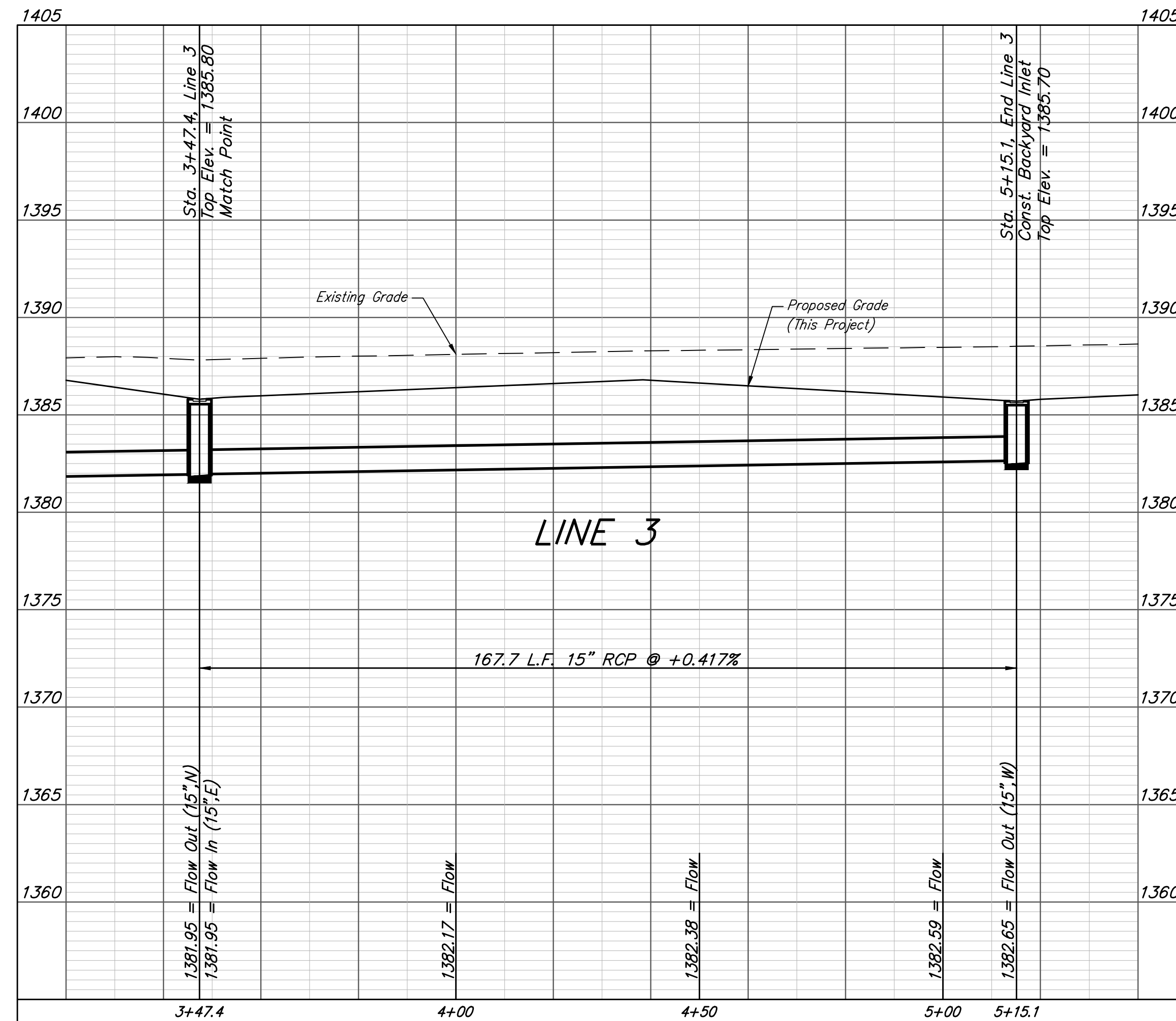
R.F. ADDITION



R.F. ADDITION

Existing trees which are in direct conflict with proposed new construction shall be removed by the Contractor **ONLY** with approval of the Developer or Engineer. Trees not in direct conflict with proposed new construction shall remain and be protected from damage. Cost shall be included in bid item "Site Clearing". Prior to construction, an on-site meeting with the developer will be held to discuss the final location of the stormwater structures and pipe between Sta. 3+45.1 and Sta. 5+12.9.

SHIRLEY MURRY  
3636 S ROCK ROAD  
WICHITA, KS 67210-1825



<b>Baughman</b>		R.F. Addition <b>LINE 3</b> Stormwater Drain Improvements	
Baughman Company, P.A. 315 Ellis St. Wichita, KS 67211 P 316-262-7271 F 316-262-0149 ENGINEERING   SURVEYING   PLANNING   LANDSCAPE ARCHITECTURE			
PROJECT NUMBER 468-2019-085421	DESIGN AEG	DRAWN HJW	DATE 04/13/20
REVISIONS:	APPROVED	SCALE Noted	SHEET
			<b>5 OF 28</b>