

**BENCHMARKS:**

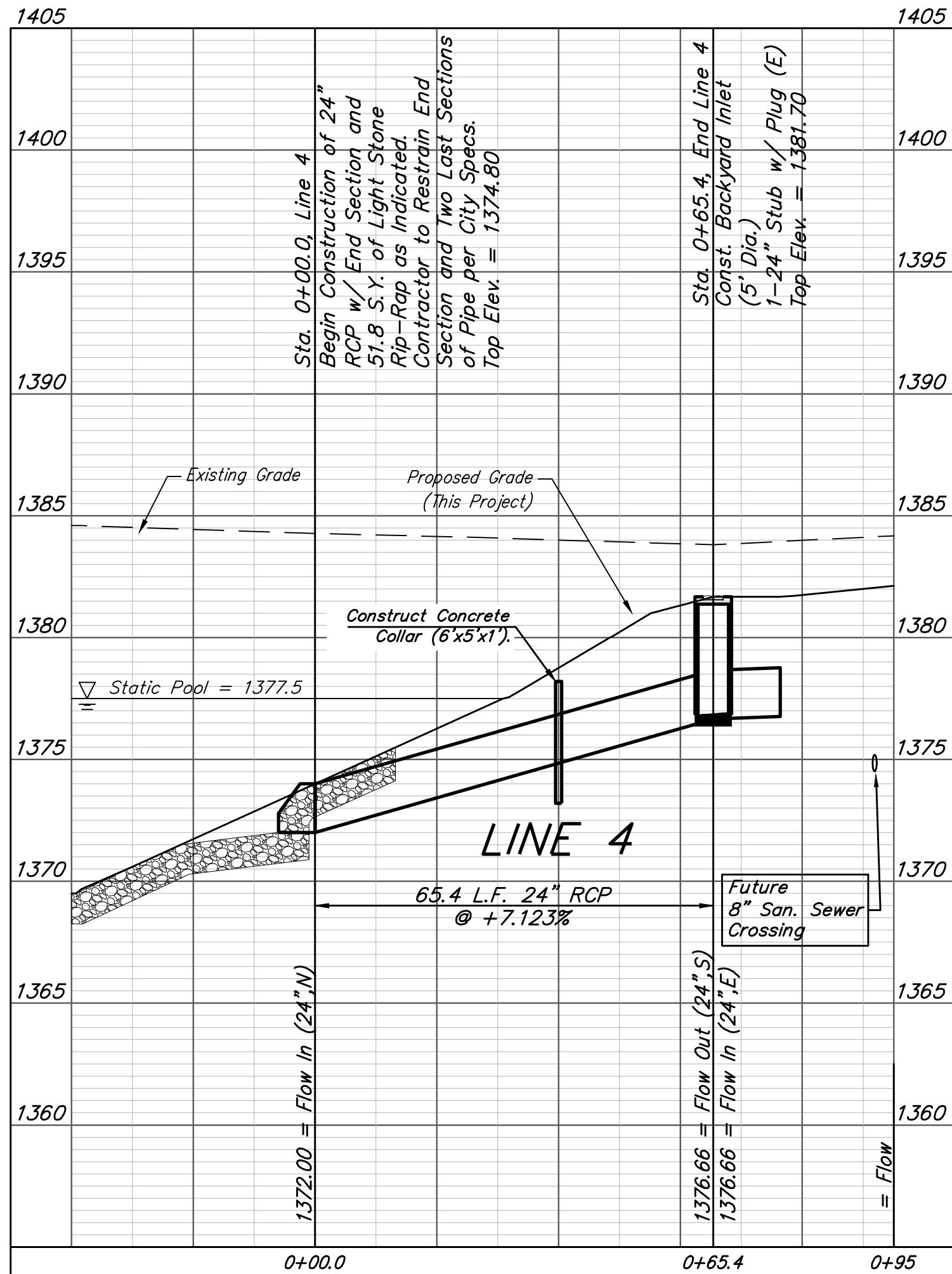
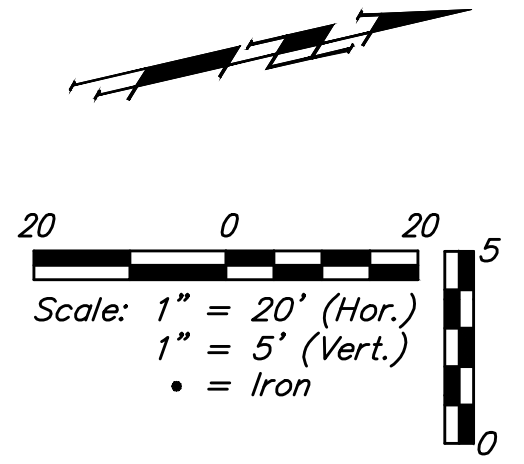
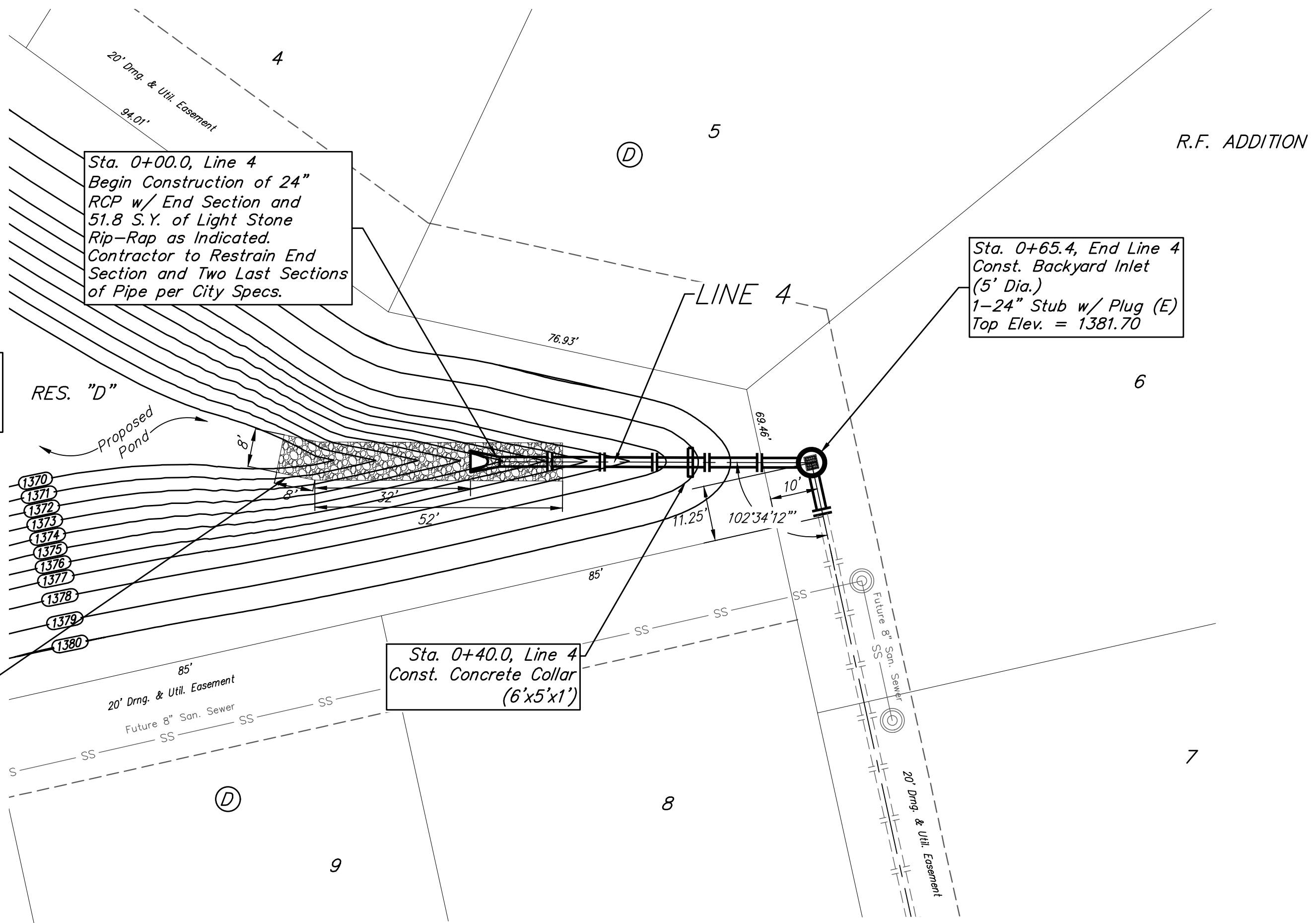
#1: "□" CUT CHISELED ON CURB,  
15.2' S. OF SW COR., LOT 6,  
BLOCK A, ROCKY FORD 2ND  
ADDITION.  
ELEV. = 1385.10 NAVD88

#2: "□" CUT CHISELED ON CURB,  
8.6' N. & 11.7' W. OF SW COR.,  
LOT 14, BLOCK C, ROCKY FORD  
2ND ADDITION.  
ELEV. = 1380.11 NAVD88

**POND DATA:**  
STATIC POOL ELEVATION: 1377.5  
PROPOSED BOTTOM ELEVATION: 1369.5  
100-YR ELEVATION: 1379.8

North corner of pond  
has 2:1 sideslopes below  
the static water surface.  
Over-excavate 40' into  
pond bottom by 2' for  
sediment protection.

R.F. ADDITION



		R.F. Addition	
		<b>LINE 4</b>	
Stormwater Drain Improvements		Baughman Company, P.A. 315 Ellis St. Wichita, KS 67211 P 316-262-7271 F 316-262-0149 ENGINEERING   SURVEYING   PLANNING   LANDSCAPE ARCHITECTURE	
PROJECT NUMBER 468-2019-085421	DESIGN AEG	DRAWN HJW	DATE 04/13/20
REVISIONS:	APPROVED	SCALE Noted	SHEET
		<b>6 OF 28</b>	