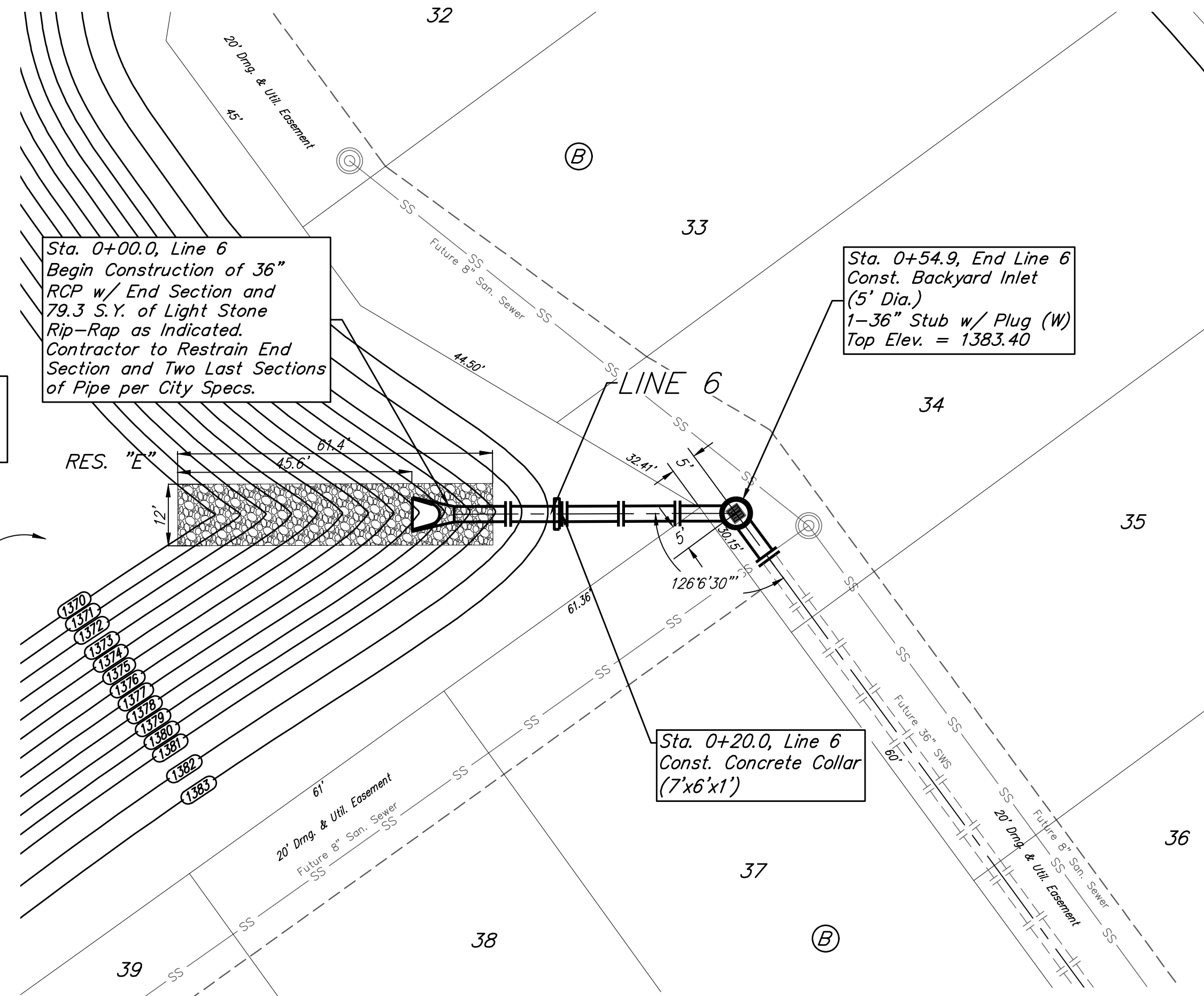


BENCHMARKS:
 #1: "□" CUT CHISELED ON CURB,
 15.2' S. OF SW COR., LOT 6,
 BLOCK A, ROCKY FORD 2ND
 ADDITION.
 ELEV. = 1385.10 NAVD88
 #2: "□" CUT CHISELED ON CURB,
 8.6' N. & 11.7' W. OF SW COR.,
 LOT 14, BLOCK C, ROCKY FORD
 2ND ADDITION.
 ELEV. = 1380.11 NAVD88

R.F. ADDITION

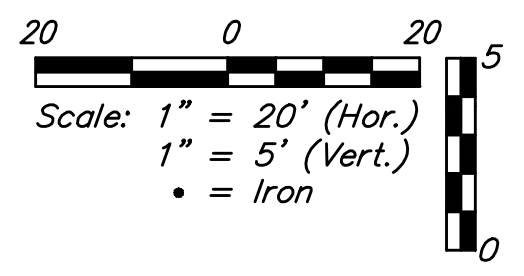
POND DATA:
 STATIC POOL ELEVATION: 1381.0
 PROPOSED BOTTOM ELEVATION: 1373.0
 100-YR ELEVATION: 1383.5

R.F. ADDITION



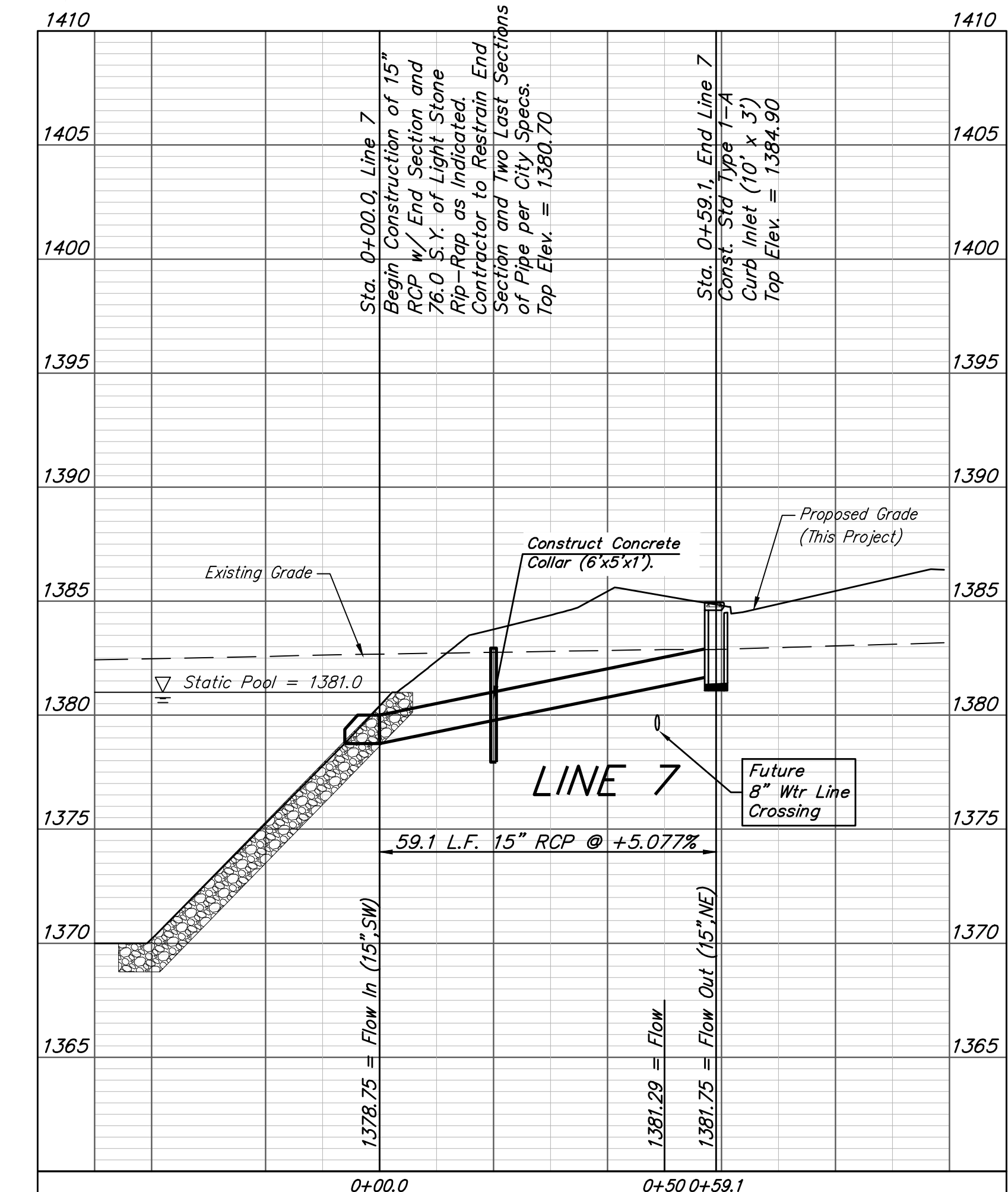
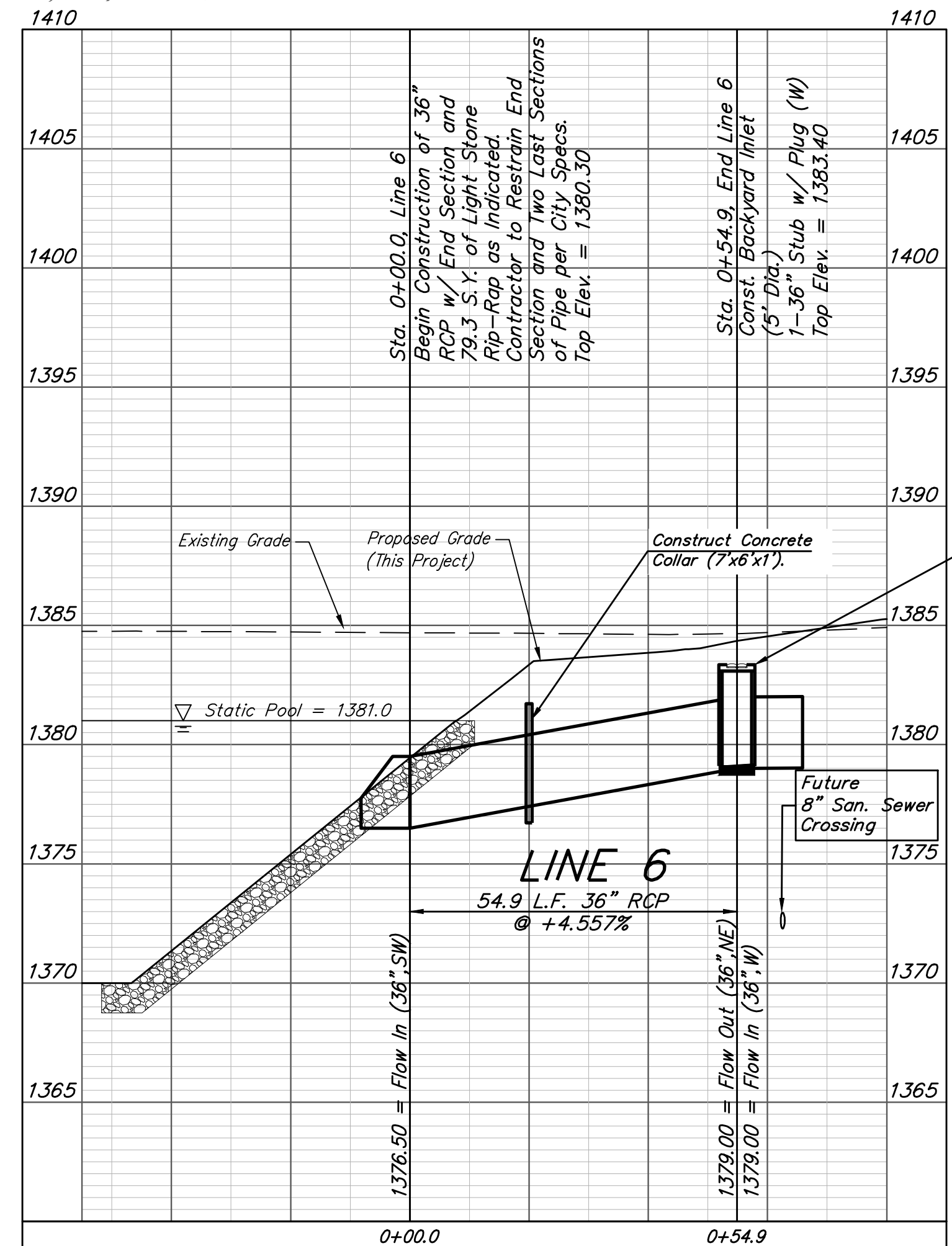
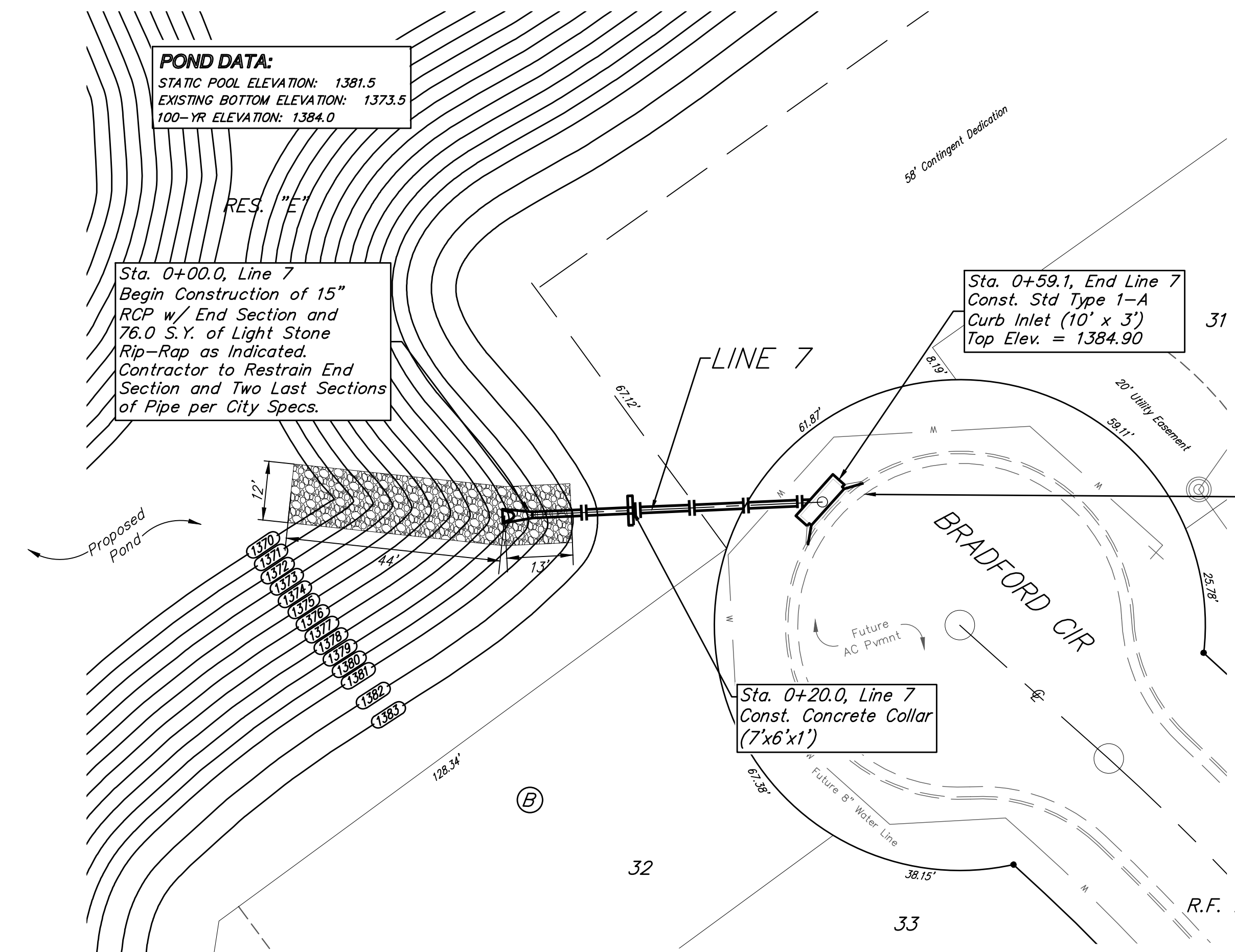
POND DATA:
 STATIC POOL ELEVATION: 1381.5
 EXISTING BOTTOM ELEVATION: 1373.5
 100-YR ELEVATION: 1384.0

Proposed Pond



Leave curb inlet opening available to accept storm water inflow. Install mulch wattles as shown on sheet #9 (46 L.F.).

R.F. ADDITION



		R.F. Addition	
		LINE 6 & 7	
Stormwater Drain Improvements		Baughman Company, P.A. 315 Ellis St. Wichita, KS 67211 P 316-262-7271 F 316-262-0149	
PROJECT NUMBER 468-2019-085421		DESIGN AEG	DRAWN HW
REVISIONS:		APPROVED	DATE 04/13/20
		SCALE Noted	SHEET
		8 OF 28	