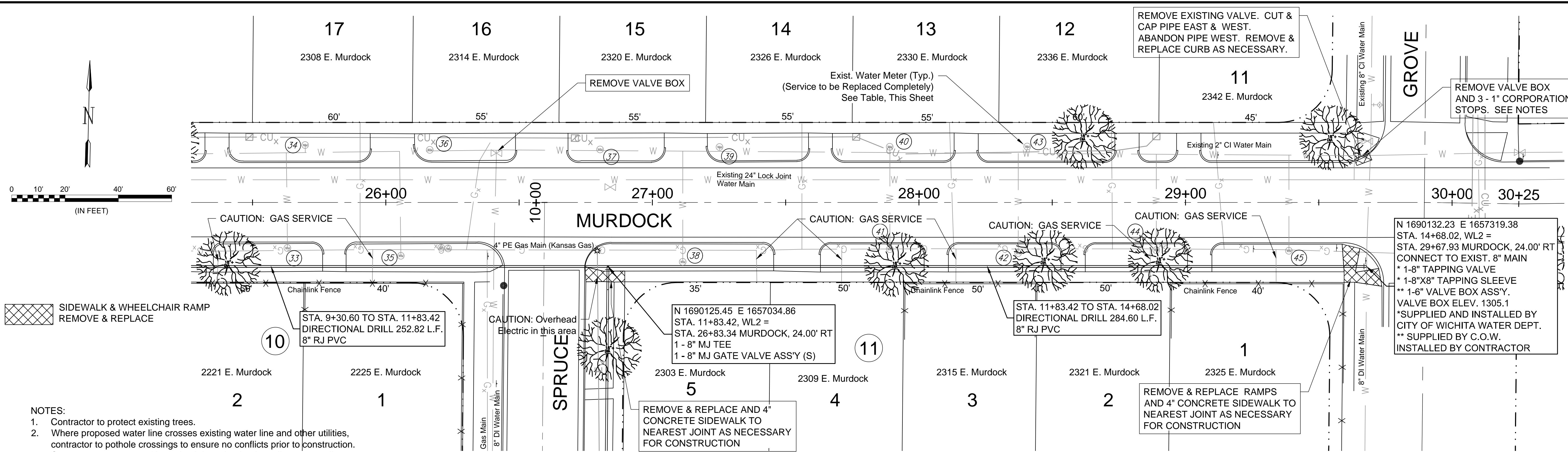


REV.	DATE	DESCRIPTION	BY



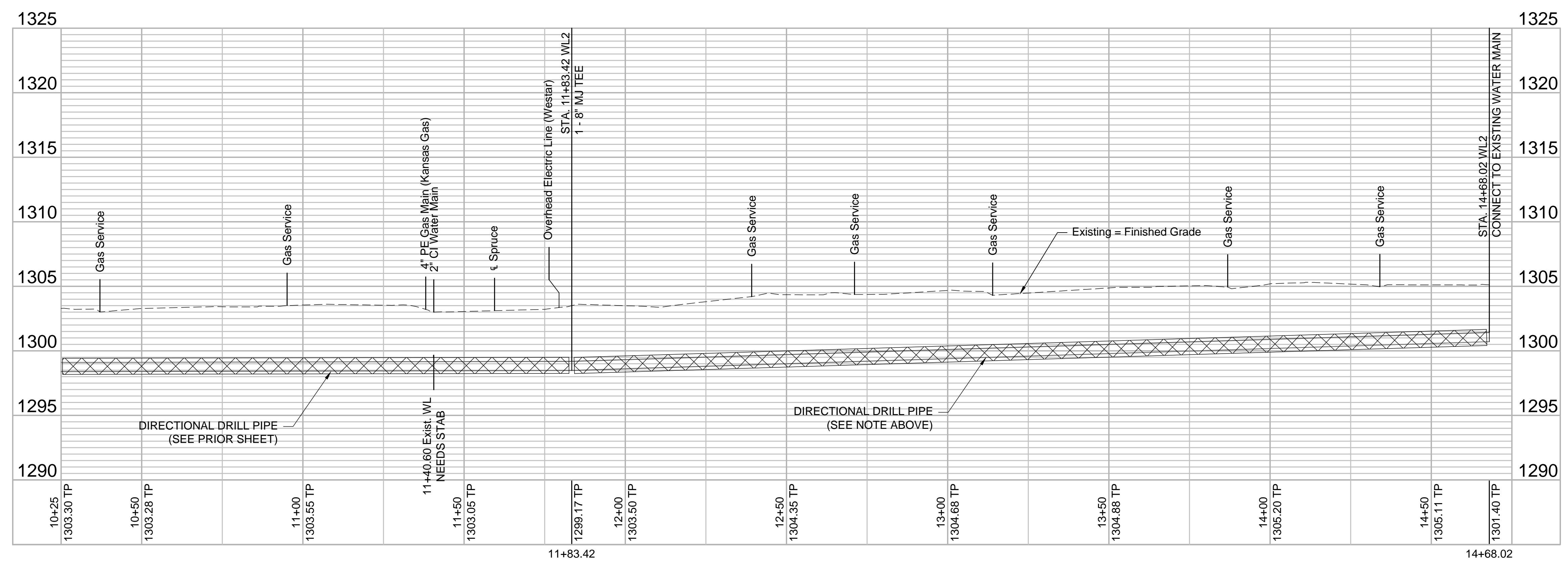
SIDEWALK & WHEELCHAIR RAMP REMOVE & REPLACE

- NOTES:
- Contractor to protect existing trees.
 - Where proposed water line crosses existing water line and other utilities, contractor to pothole crossings to ensure no conflicts prior to construction. Contractor to ensure 3.5' bury depth is maintained on all new water lines.
 - Removal & Replacement of Concrete Sidewalk, Pavement or Driveways shall be incidental to the Bid Items for 8" Pipe.
 - Quantities for removal of concrete items are For Information Only.
 - The Cost to Cut, Cap and Abandon Existing Lines and Valves Shall be Incidental to the Bid Item for Site Clearing.

- Abandoning Corporations Supplying Water to larger Water Mains Notes
- Expose and shut off all 1" or 3/4" corporations supplying water to the water main to be abandoned.
 - Cut the service pipe no more than four inches from the corporation to verify all corporations have been shut off.

METER #	BL STATION	LT./RT.	SERVICE (LONG OR SHORT)	ADDRESS	AS BUILT
33	10+63	RT.	SHORT	2221 E. MURDOCK	
34	10+70	LT.	LONG	2308 E MURDOCK	
35	11+05	RT.	SHORT	2225 E. MURDOCK	
36	11+17	LT.	LONG	2314 E. MURDOCK	
37	11+80	LT.	LONG	2320 E. MURDOCK	
38	12+11	RT.	SHORT	2303 E. MURDOCK	
39	12+25	LT.	LONG	2326 E. MURDOCK	

METER #	BL STATION	LT./RT.	SERVICE (LONG OR SHORT)	ADDRESS	AS BUILT
40	12+89	LT.	LONG	2330 E. MURDOCK	
41	12+89	RT.	SHORT	2309 E. MURDOCK	
42	13+37	RT.	SHORT	2315 E. MURDOCK	
43	13+41	LT	LONG	2336 E. MURDOCK	
44	13+89	RT.	SHORT	2321 E. MURDOCK	
45	14+39	RT.	SHORT	2325 E. MURDOCK	



File: L:\2018\18267614 - Madison and Murdock Water Main\Drawings\C3D\Group B Plans\Water Line 2-3.dwg Last Save: 4/12/2020 6:06 PM Last saved by: KWLee
Last plotted by: Lee, Ken W. Plot Style: Plot Scale: 1:2,584.9 Plot Date: 4/12/2020 6:12 PM Plotter used: None