

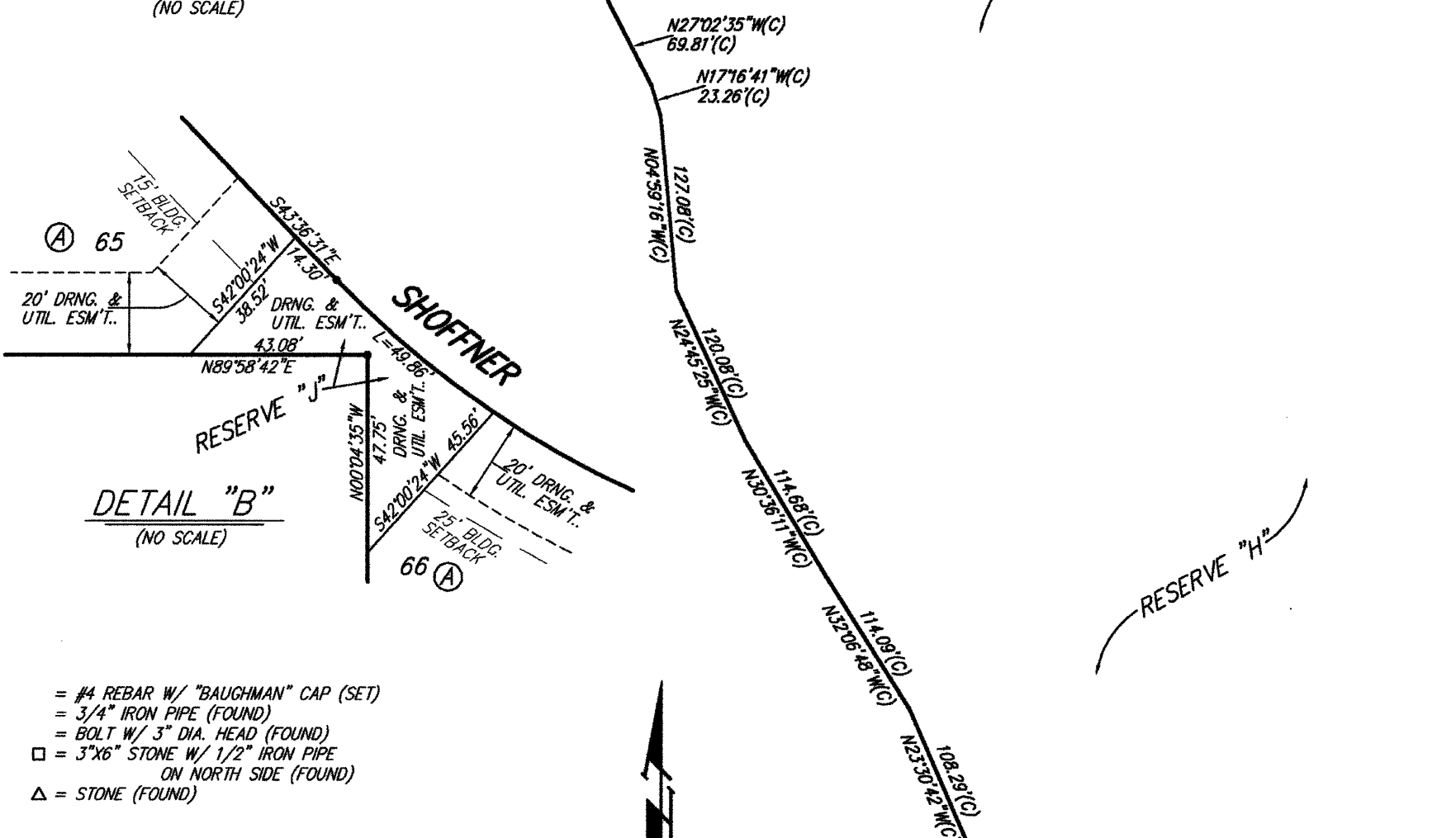
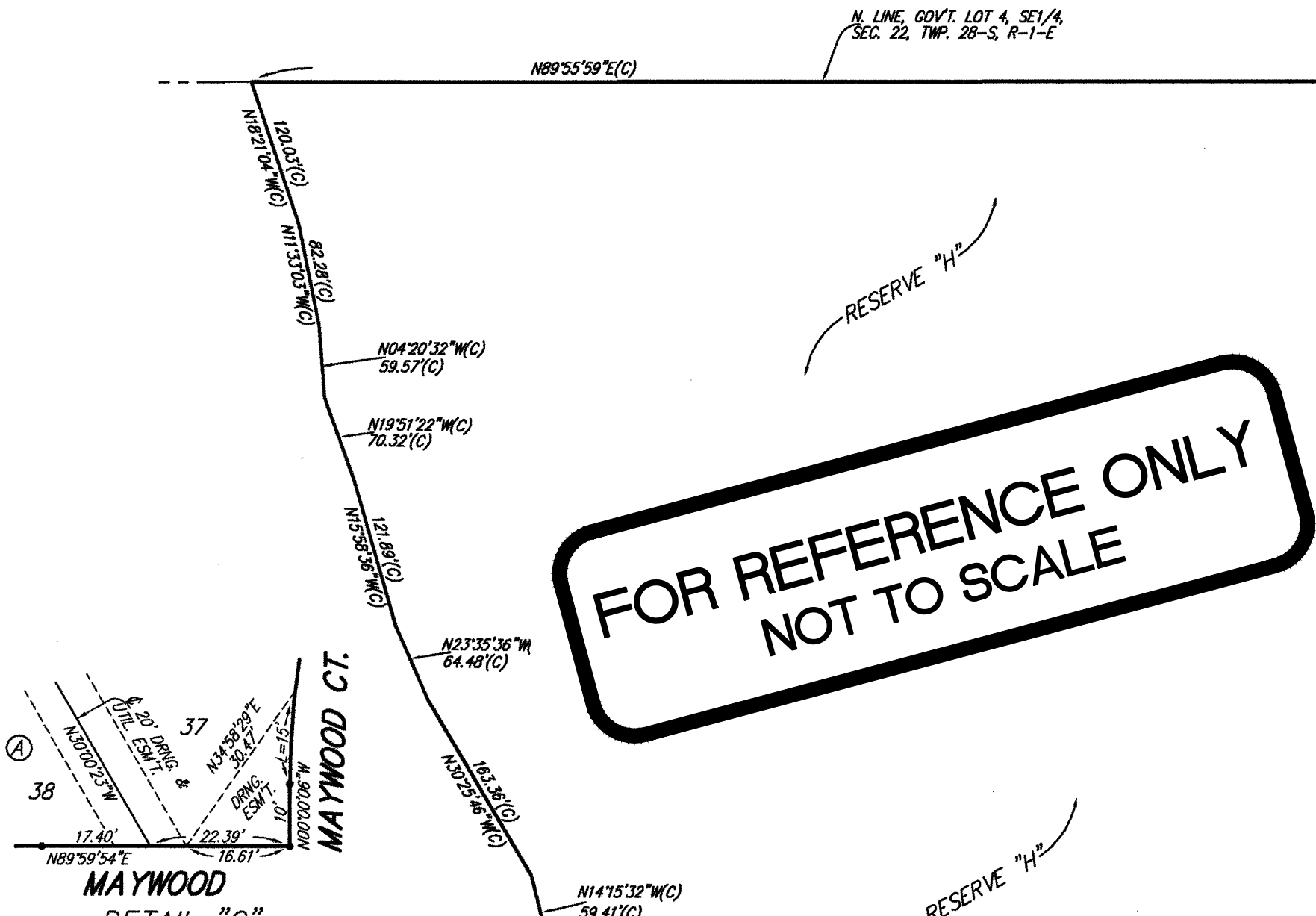
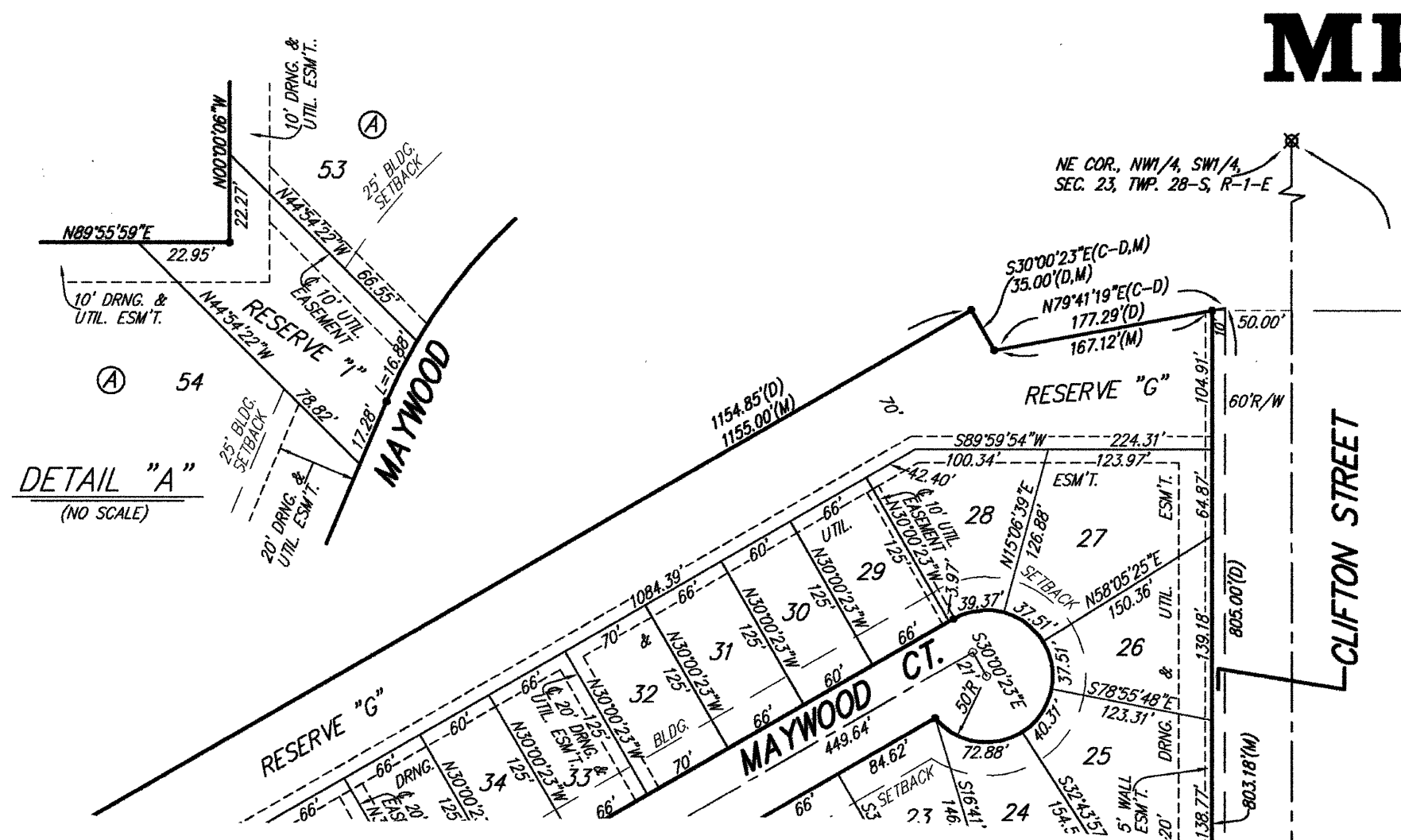
MEADOWLAKE BEACH ADDITION WICHITA, SEDGWICK COUNTY, KANSAS

MINIMUM BUILDING PAD ELEVATIONS FOR LOWEST OPENING TO THE STRUCTURES

LOT	BLOCK	ELEVATION
1-83	A	1265.0
1-10	B	1265.0
11-13	B	1265.2
14-16, 19-22, 24-32, 34-38	B	1265.5
17, 18, 23, 33	B	1266.0
1-3, 6, 14, 17-20, 24, 32, 35-40	C	1265.0
4, 5, 7, 22, 23, 27, 28, 33, 34	C	1265.5
8, 28	C	1266.0
9-13, 15, 16, 21, 25, 26, 30, 31	C	1264.5

BENCHMARK:
CITY OF WICHITA BENCHMARK DISC. SE CORNER OF CLIFTON AND 55TH ST. SOUTHWEST CORNER OF RCBC, ON TOP OF HUBBARD AT THE WEST END. ELEV. = 1263.29 NGVD29

**FOR REFERENCE ONLY
NOT TO SCALE**



#4 REBAR W/ "BAUGHMAN" CAP (SET)
 3/4" IRON PIPE (FOUND)
 BOLT W/ 3" DIA. HEAD (FOUND)
 3" STONE W/ 1/2" IRON PIPE (ON NORTH SIDE) (FOUND)
 3" STONE (FOUND)

(M) = MEASURED
 (P) = PLATTED
 (D) = DESCRIBED
 (C) = CALCULATED
 (C-P) = CALCULATED PER PLATTED INFO.
 (C-D) = CALCULATED PER DESCRIBED INFO.

NOTE:
 GRANT OF TEMPORARY EASEMENT, (UNDEFINED WIDTH, MODIFIABLE, AND NON-EXCLUSIVE), FOR EXISTING ACCESS AND EXISTING UTILITIES. (DOC.#/FLM-PG: 28770778)



MEADOWLAKE BEACH ADD. - PH. 3A

BAUGHMAN

BAUGHMAN COMPANY, P.A.

315 5th St. Wichita, KS 67211 P 316-262-7371 F 316-262-0149

ENGINEERING | SURVEYING | PLANNING | LANDSCAPE ARCHITECTURE

APPROVED: [Signature]

DATE: 05/20/20

14
14