

**BENCHMARKS:**  
 BM #1 - City of Wichita Benchmark Disc, SE Corner of Clifton and 55th Street South, Southwest corner of RCBC, on top of hubguard at the West end.  
 Elev. = 1263.91 NAVD88

BM #2 - "C" Cut on top of curb, north side of Shoffner, adjacent to SE corner of Lot 14 Block B, Meadowlake Beach Addition, Sedgwick County, Kansas.  
 Elev. = 1264.80 NAVD88

Curve #1				
Curve Data Based on Waterline				
Rad. = 175' Delta = 46°33'50" Tangent = 75.30'				
Arc = 142.22' L.C. = 138.34' Def./Ft. = 9.82222 Min.				
Station	Arc	8' Right	Defl.	Total Defl.
4+33.05	-	-	0°00'00"	0°00'00"
4+50.00	16.95'	16.17'	2°46'29"	2°46'29"
4+75.00	25.00'	23.84'	4°05'34"	6°52'03"
5+00.00	25.00'	23.84'	4°05'33"	10°57'36"
5+25.00	25.00'	23.84'	4°05'33"	15°03'09"
5+50.00	25.00'	23.84'	4°05'34"	19°08'43"
5+75.27	25.27'	24.09'	4°08'12"	23°16'55"

Curve #3				
Curve Data Based on Waterline				
Rad. = 224' Delta = 14°44'49" Tangent = 28.99'				
Arc = 57.66' L.C. = 57.49' Def./Ft. = 7.67271 Min.				
Station	Arc	8' Right	Defl.	Total Defl.
10+15.16	-	-	0°00'00"	0°00'00"
10+25.00	9.84'	9.49'	1°15'30"	1°15'30"
10+42.82	17.82'	17.18'	2°16'44"	3°32'14"
10+50.00	7.18'	6.92'	0°55'05"	4°27'19"
10+72.82	22.82'	21.99'	2°55'06"	7°22'25"

Curve #2				
Curve Data Based on Waterline				
Rad. = 125' Delta = 46°23'05" Tangent = 53.56'				
Arc = 101.20' L.C. = 98.45' Def./Ft. = 13.75041 Min.				
Station	Arc	8' Right	Defl.	Total Defl.
7+13.95	-	-	0°00'00"	0°00'00"
7+25.00	11.05'	11.75'	2°31'57"	2°31'57"
7+50.00	25.00'	26.55'	5°43'45"	8°15'42"
7+75.00	25.00'	26.55'	5°43'46"	13°59'28"
8+00.00	25.00'	26.55'	5°43'45"	19°43'13"
8+15.15	15.15'	16.11'	3°28'20"	23°11'33"

WL Sta. 0+00.00, Begin Line 1  
 BL Sta. 0+14.73, 26.00' Lt.  
 Remove existing cap and extend pipe west. Contractor to verify depth & location of existing water line prior to construction.  
 N=1,651,887.00 E=1,630,702.58

WL Sta. 1+29.00, Line 1  
 BL Sta. 1+43.73, 26.00' Lt.  
 = Sta. 0+00.00, Line 2  
 1 - 8"x8" CIMJ Tee  
 1 - Valve Assembly, Gate 8" (S)  
 Valve Box Elev. = 1264.30  
 N=1,651,886.61 E=1,630,573.58

For radii under 300', contractor shall use short pipe lengths.

WL Sta. 4+33.05, Line 1-PC  
 BL Sta. 3+96.78, 25.00' Rt.  
 N=1,651,936.85 E=1,630,320.38

Proposed 8" SS & 36" SWS Crossings

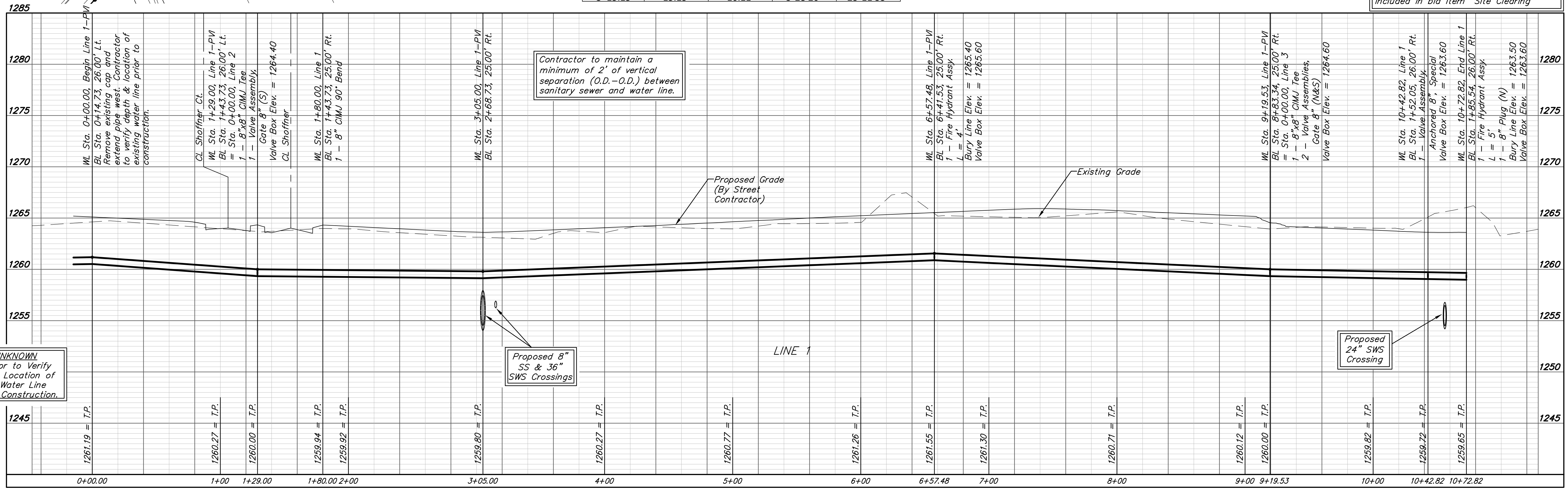
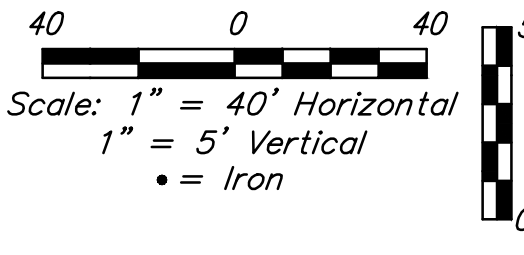
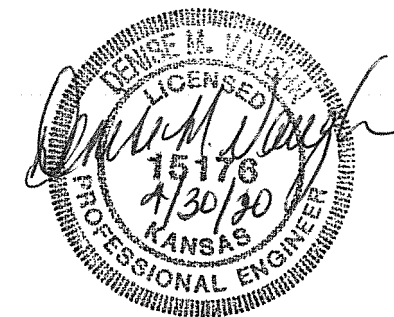
WL Sta. 7+13.95, Line 1-PC  
 BL Sta. 6+98.00, 25.00' Rt.  
 N=1,652,091.56 E=1,630,097.49

WL Sta. 8+15.15, Line 1-PT  
 BL Sta. 7+78.96, 25.00' Rt.  
 N=1,652,130.35 E=1,630,007.00

WL Sta. 10+72.82, End Line 1  
 BL Sta. 1+85.54, 26.00' Rt.  
 1 - Fire Hydrant Assy.  
 L = 5'  
 1 - 8" Plug (N)  
 Bury Line Elev. = 1263.50  
 Valve Box Elev. = 1263.60  
 N=1,652,282.82 E=1,629,913.24

Trees in conflict with water line construction to be removed by contractor. To be paid for as lump sum bid item "Site Clearing"

All other trees shall remain and be protected from damage during construction. Overhanging limbs shall be trimmed by the Contractor using a chain saw only as necessary for construction and with approval of the Engineer. Cost of tree trimming to be included in bid item "Site Clearing"



**DEPTH UNKNOWN**  
 Contractor to Verify Depth & Location of Existing Water Line Prior to Construction.

Contractor to maintain a minimum of 2' of vertical separation (O.D.-O.D.) between sanitary sewer and water line.