

WATER DISTRIBUTION SYSTEM

to serve

Belle Terre South 2nd Addition

CITY OF WICHITA, KANSAS

James L. Armour, P.E. City Engineer

Project Number

448-90274

O.C.A. Number

735356

GENERAL NOTES:

- Contractor will be required to provide notice to utility companies a minimum of forty-eight (48) hours prior to any excavation, as follows:

Kansas One-Call 687-2470

The Contractor must notify the following in case of an emergency:

Cox Communications	262-4270
Kansas Gas Service	1-888-482-4950
Westar Energy	383-8650
Aquila Energy	1-800-303-0357
AT&T	268-2245
City of Wichita Water Dept.	268-4563
City of Wichita Sewer Maint.	268-4024
City of Wichita Storm Sewer Maint.	268-4090
City of Wichita Traffic Maint.	268-4034
Conoco Phillips Pipeline Co.	1-877-267-2290
Southern Star Pipeline Co.	529-6600
Kinder-Morgan Pipeline Co.	1-888-844-5658

- Utility service lines, poles, valve boxes, meters, and etcetera are to be adjusted as necessary by others prior to construction unless the plans specifically call for their adjustment by the Contractor or unless the plans specifically identify a utility to be adjusted by its owner during construction. Existing utilities and their location, as shown on the plans, represent the best information obtainable for design. The Contractor will be required to work around existing utilities within the right-of-way which do not conflict with proposed construction.

- Rubble from the removal of miscellaneous structures and excess excavation which is to be wasted shall be disposed of on sites to be provided by the Contractor. These sites shall be approved by the Engineer as to suitability, appearance and site location. Locations, in the opinion of the Engineer, that will leave an unsightly appearance will not be approved. All disposal sites must be approved by the Kansas Department of Health and Environment. Material either stockpiled or disposed of in a flood plain would require a Kansas State Board of Agriculture permit. Any material dumped in waters of the United States or wetlands is subject to U.S. Corps. of Engineers permitting regulations. Any material buried or stockpiled beyond approved construction limits would require additional archaeological investigations unless buried in a previously approved borrow location.

- Trees and shrubs in public right-of-way which are in direct conflict with proposed new construction shall be removed by the Contractor with the Engineer's approval only. Trees and shrubs which are not in direct conflict with proposed new construction shall be saved and protected from damage.

- The Contractor shall give all property owners and/or tenants of developed property abutting the construction of this project a minimum of ten (10) days notice prior to start of construction.

- The Contractor shall be responsible for preserving property irons. The Contractor will be required to re-establish any property irons which are damaged or destroyed by his construction operations. Such irons shall be re-established by a licensed land surveyor in accordance with state laws.

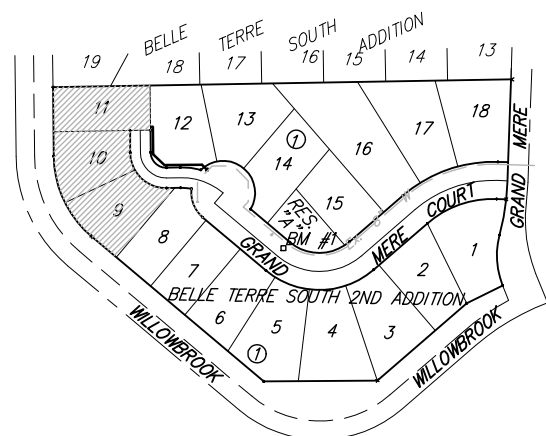
- All existing and proposed erosion control measures including silt fencing, erosion control mat, straw bales, inlet barriers, and const. entrance shall be maintained throughout construction by the contractor and until project is accepted by the City of Wichita. The on-site engineer shall complete weekly reports on the status of erosion control measures. The contractor shall be required to comply with maintenance and/or replacement of erosion control measures as determined by the on-site engineer until project is accepted by City of Wichita.

- All water mains and appurtenances shall be installed in accordance with City of Wichita, Kansas Standard Specifications for Water Main Installations No. 145.33.

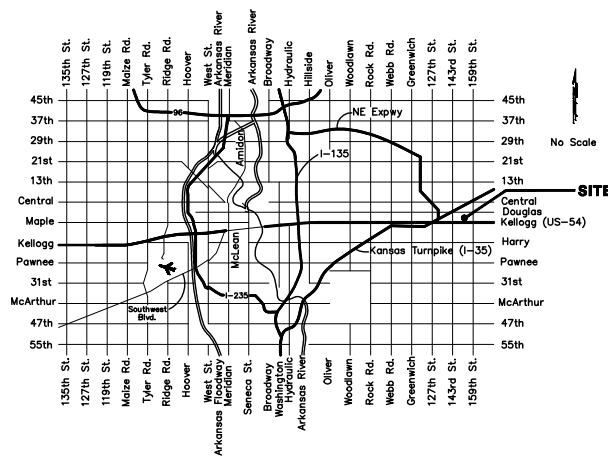
- Opening and closing of water valves shall be done slowly to prevent damage to the water distributions system from water hammer. All valves closed by the contractor must be reopened as new construction permits. Project inspector must ascertain that any valve closed by the Contractor is reopened. Contractor will be permitted to operate water valves only when the project inspector assigned to the project is present.

- All areas disturbed during construction shall be seeded at 300 lbs./acre with Rye Grass immediately following construction in that area. Contractor shall prepare ground per City of Wichita Specifications. All costs associated with seeding shall be included in bid item "Project Seeding"

- Contractor shall remove, repair, and replace any irrigation systems or landscaping necessary for water line construction. All costs associated with removal, repair, and replacement of irrigation systems or landscaping to be included in "Site Clearing & Restoration" bid item.



BENEFIT DISTRICT:



VICINITY MAP

Scale: 1" = 150'

Sheet Index

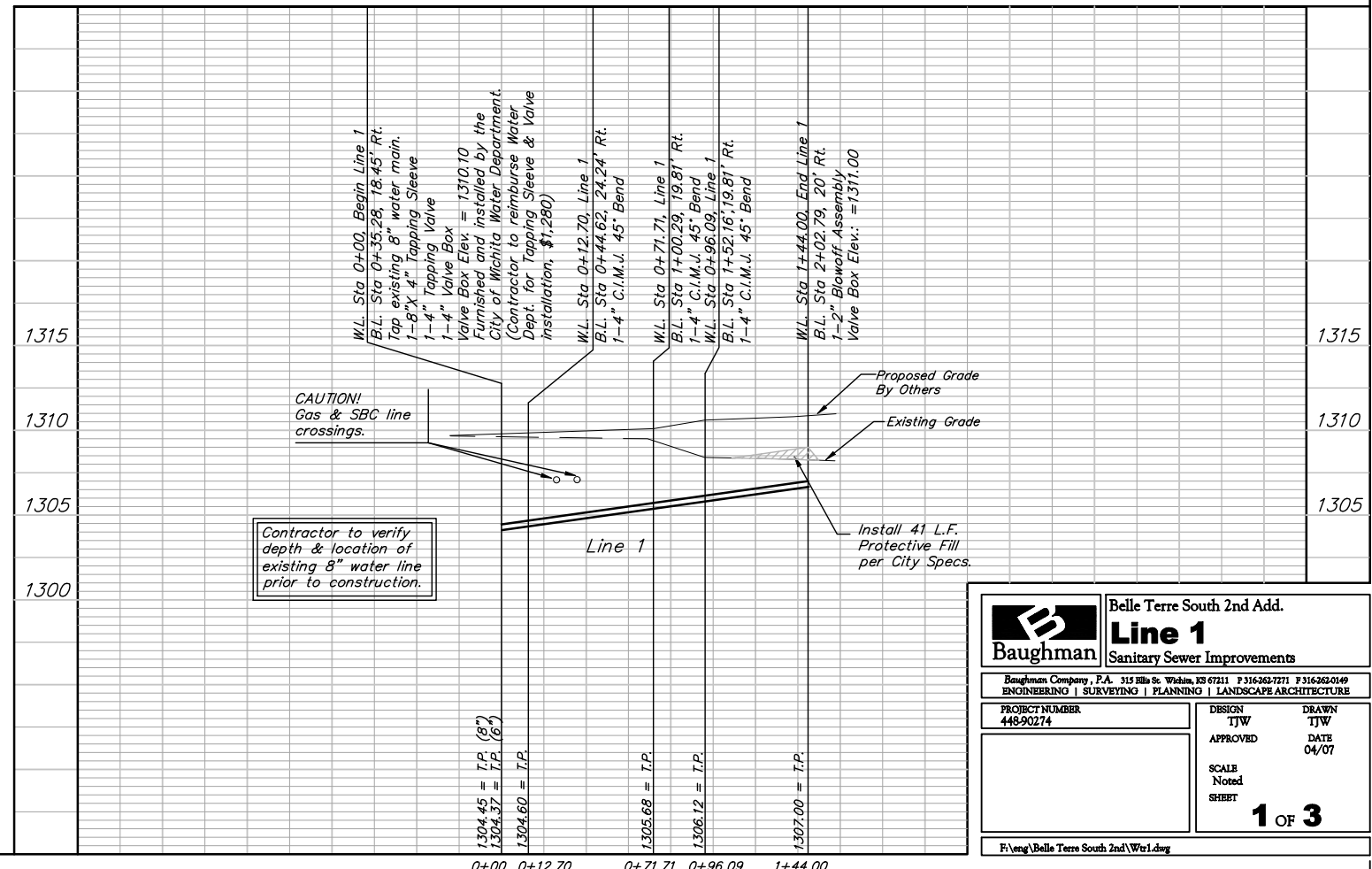
Title Sheet / Line 1	1
Standard Water Details	2
Copy of Plat	3

Note: Contractor to remove and replace any existing concrete or rock driveways as necessary for water line construction. Cost of removal and replacement to be included in "Site Clearing & Restoration" bid item.

W.L. Sta 0+00, Begin Line 1
B.L. Sta 0+35.28, 18.45' Rt.
Tap existing 8" water main.
1-8" X 4" Tapping Sleeve
1-4" Tapping Valve
1-4" Valve Box
Valve Box Elev. = 1310.10
Furnished and installed by the City of Wichita Water Department. (Contractor to reimburse Water Dept. for Tapping Sleeve & Valve Installation, \$1,280)

W.L. Sta 0+12.70, Line 1
B.L. Sta 0+44.62, 24.24' Rt.
1-4" C.I.M.J. 45° Bend

Note: Protective fill to be placed and compacted per City Specs prior to water line installation.



CAUTION! Gas & SBC line crossings.

Contractor to verify depth & location of existing 8" water line prior to construction.

Proposed Grade By Others

Existing Grade

Install 41 L.F. Protective Fill per City Specs.

1304.45 = T.P. (8')	0+00
1304.37 = T.P. (6')	0+12.70
1304.60 = T.P.	0+71.71
1305.68 = T.P.	0+96.09
1306.12 = T.P.	1+44.00

		Belle Terre South 2nd Add. Line 1 Sanitary Sewer Improvements	
Baughman Company, P.A. 315 Ellis St. Wichita, KS 67211 P 316-262-7771 F 316-262-0149 ENGINEERING SURVEYING PLANNING LANDSCAPE ARCHITECTURE			
PROJECT NUMBER 448-90274	DESIGN TJW APPROVED	DRAWN TJW DATE 04/07	SCALE Noted SHEET 1 OF 3
P:\eng\Belle Terre South 2nd\Wtr1.dwg			

BENCHMARK:
BM #1 "□" Cut in top of curb at PC adjacent to Res. "A", Belle Terre South 2nd Addition.
Elev. = 1308.72 (M.S.L.)

BM #2 "□" Cut in top of curb at NW corner of Lot 23, Block 3, Belle Terre South Addition.
Elev. = 1307.17 (M.S.L.)

BM #3 "□" Cut in top of curb at NE corner of Lot 2, Block 1, Belle Terre South Addition.
Elev. = 1304.39 (M.S.L.)

BELLE TERRE SOUTH 2ND ADDITION

CAUTION! Existing power pole near by.

CAUTION! Gas & SBC line crossings.

Scale: 1" = 40' Horizontal
1" = 5' Vertical
• = Iron

W.L. Sta 0+96.09, Line 1
B.L. Sta 1+52.16, 19.81' Rt.
1-4" C.I.M.J. 45° Bend

15' Str. Dmg. & Util. Esmt.

47.91 L.F. 4" Pipe

24.38 L.F. 4" Pipe

W.L. Sta 1+44.00, End Line 1
B.L. Sta 2+02.79, 20' Rt.
1-2" Blowoff Assembly
Valve Box Elev. = 123.60

59.01 L.F. 4" Pipe

W.L. Sta 0+71.71, Line 1
B.L. Sta 1+00.29, 19.81' Rt.
1-4" C.I.M.J. 45° Bend

12.70 L.F. 4" Pipe