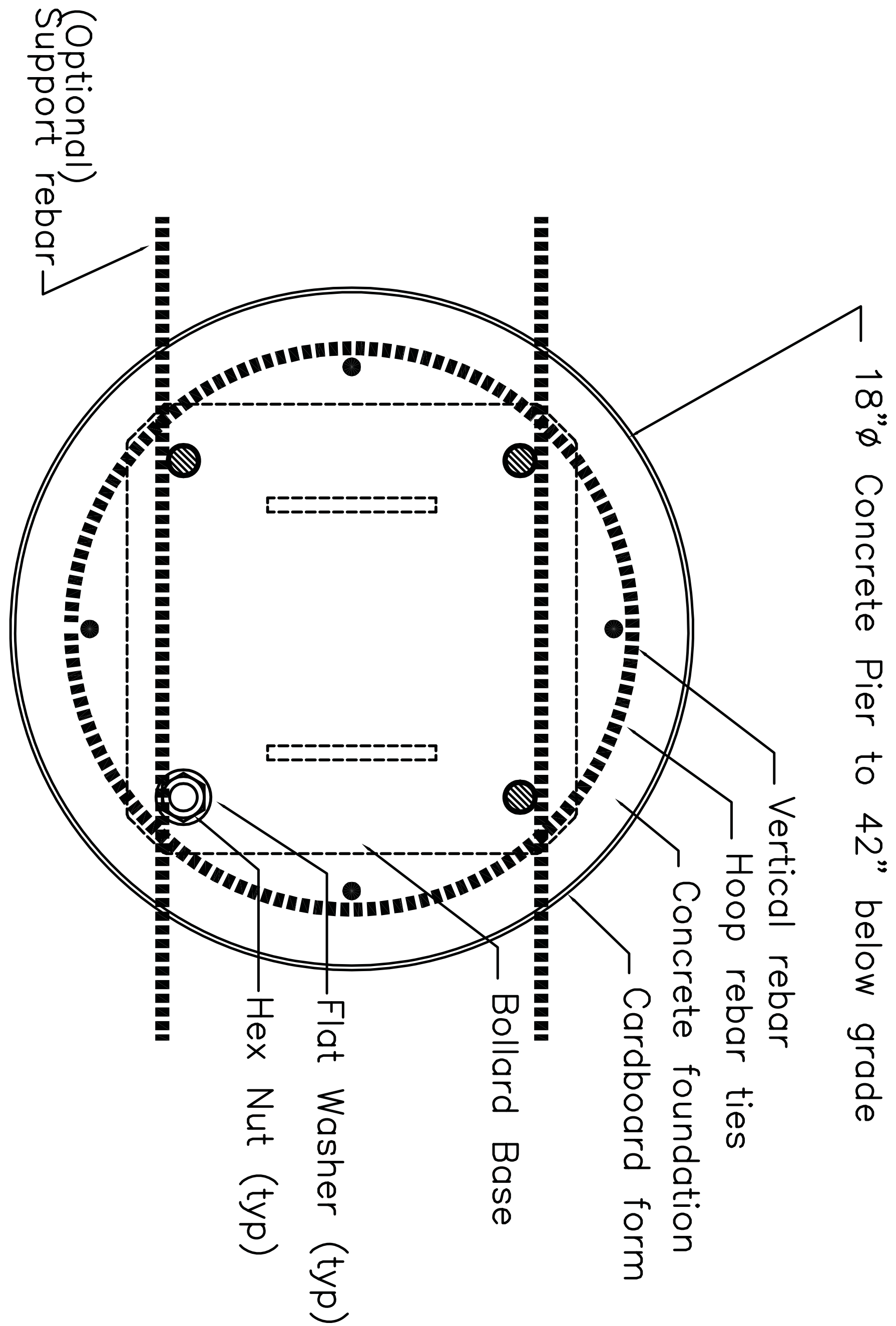
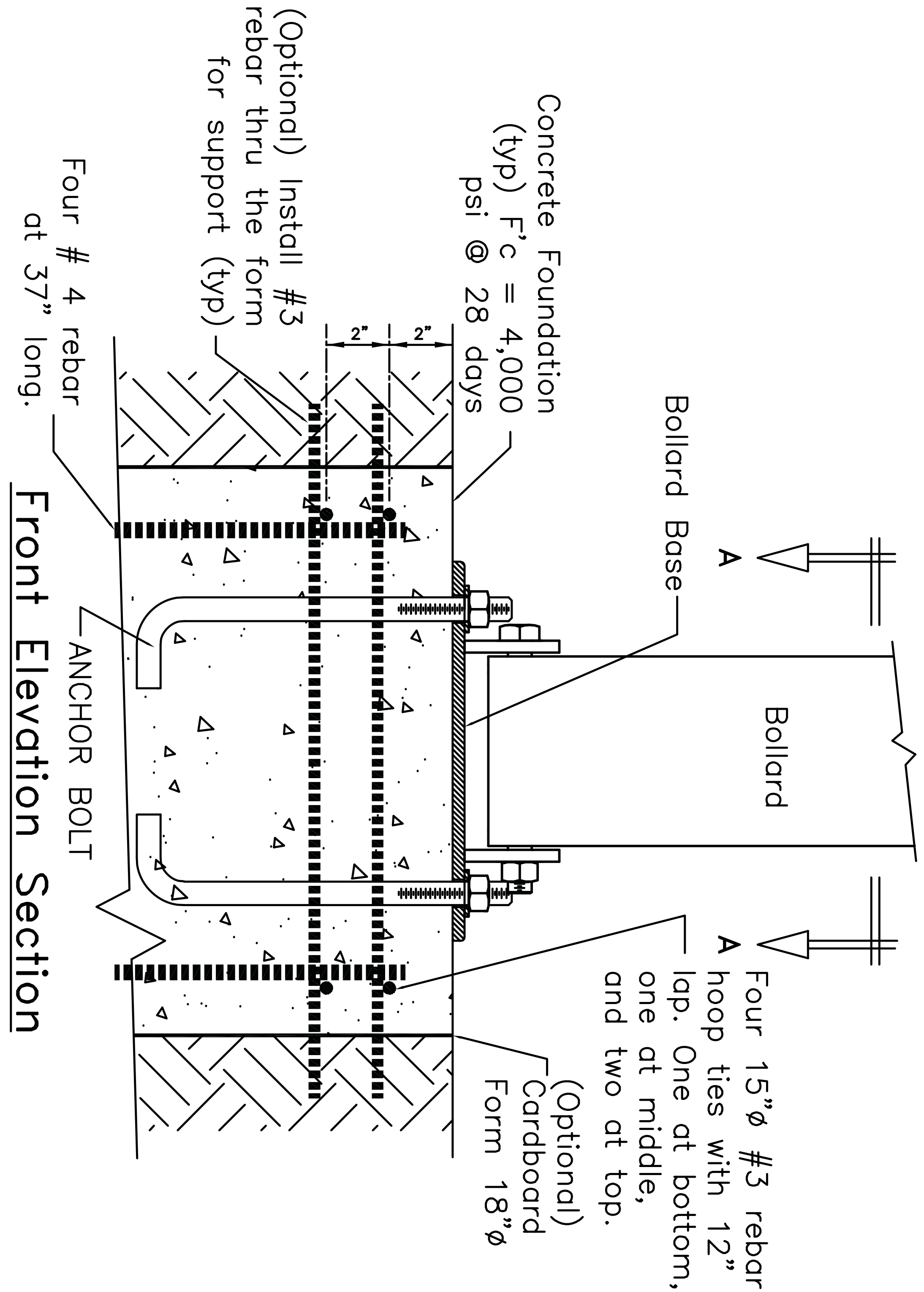


This Drawing shall not be used nor reproduced except when authorized in writing by TrafficGuard,[®] Inc.



CPAS10 COLLAPSIBLE POST ANCHOR SYSTEM DETAILS

These Anchorage systems are designed for the noted loading based on a quality substrate material and proper installation, by the customer's contractor. The installation shall conform to the drawing and the manufacturer's instructions. The customer is responsible to determine the adequate quality of new or existing concrete and the earth substrate. The concrete shall be solid and uncracked with adequate thickness for the anchors and a compressive strength of F_c' (minimum)=4,000 pounds per square inch. The earth shall have an unconfined strength of Q_u (minimum)=4,000 pounds per square foot. If you have questionable substrates, contact your local structural engineer for appropriate anchorage evaluation and/or anchorage design. A test installation may be required to determine the adequacy of the anchorage system for your specific installation. Call for guidance, if needed.

CONCRETE PIER ANCHOR SYSTEM DETAIL DRAWING CPAS10

THIRD ANGLE PROJECTION

Toll Free P.O. Box 201, Geneva, IL. 60134
 Bus: 1.877.727.7347 Fax: 1.800.814.7194

2	11.14.10	wkz	Locking Pins & Note	Action	by	Design	wkz	Dwg. Scale:	nts	Assembly	Shipping Weight	Drawing Number:
1	-	-	-	Drawn	wkz	Copywrite:	2010	Dwg. Size:	Letter	Drawing Date:	12.10.10	Sheet: 2 of 2
Rev.	Date	by	Description	Checked	wkz	Dwg. Size:	Letter	Drawing Date:	12.10.10	Sheet:	2 of 2	