

BENCHMARKS:
 BM #1: City of Wichita disc top of headwall of RCBC 660'± east of the SE Cor. of the SE1/4, SEC. 22, TWP. 27-S, R-2-W. Elev. = 1410.27 NAVD88

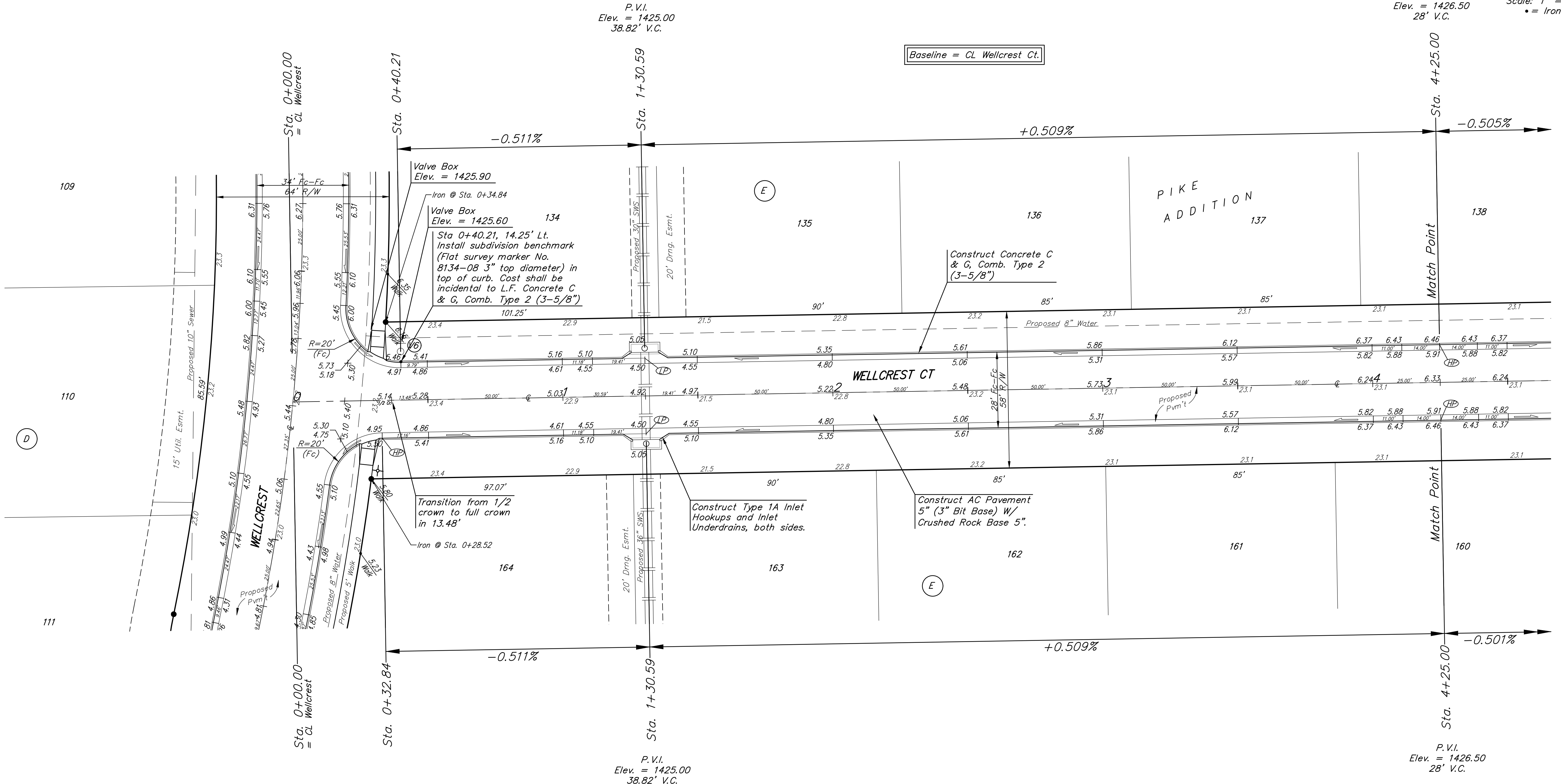
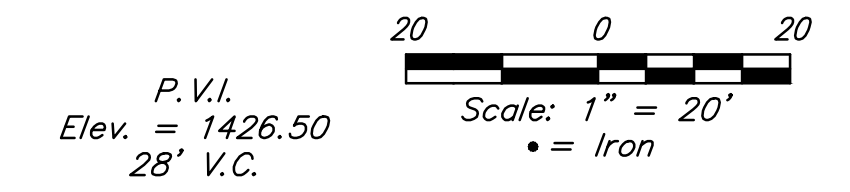
BM #2: 60d step nail in utility pole 28' east of Q 162nd St. W. and 26' north of Q of Maple. Elev. = 1417.99 NAVD88

Subdivision Bench Marks		
Street & Station	Location Description	Elevation
Wellcrest Ct. 0+40.21, 14.25' Lt.	Adjacent to Fire Hydrant at east end of NE Curb Return of Wellcrest & Wellcrest Ct.	

WATER VALVE LOCATION TABLE

VALVE NUMBER	STREET	BASELINE STATION	OFFSET DISTANCE	OFFSET DIRECTION
V6	Wellcrest Ct.	0+40.21	23'	Lt.

Paving contractor will be responsible to operate all water valves on the project, in the presence of the inspector, to ensure accessibility to the valves, and that all valves (except blowoffs) are left in the "ON" position when the project is completed.



P.V.I.
 Elev. = 1425.00
 38.82' V.C.

P.V.I.
 Elev. = 1426.50
 28' V.C.

Baseline = CL Wellcrest Ct.

NOTE: ROLL TYPE CURB & GUTTER (TYPE 2) TO BE CONSTRUCTED ON THE PAVEMENT SHOWN ON THIS SHEET. TOP OF CURB ELEVATIONS ARE GIVEN FOR FULL HEIGHT CURB (TYPE 4).

PIKE ADDITION - PH. II
WELLCREST CT.
 STREET IMPROVEMENTS

Baughman Company, P.A.
 ENGINEERING | PLANNING | LANDSCAPE ARCHITECTURE
 1515 W. WALTON ST. #111, P.O. BOX 2711, WICHITA, KS 67201
 (316) 261-1111 | www.baughman.com

DATE: 08/20
 APPROVED: [Signature]
 SHEET 4 OF 35