

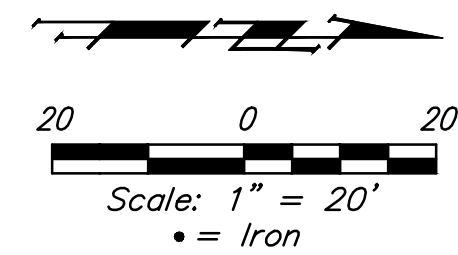
BENCHMARKS:
 BM #1: City of Wichita disc top of headwall of RCBC 660± east of the SE Cor. of the SE1/4, SEC. 22, TWP. 27-S, R-2-W. Elev. = 1410.27 NAVD88

BM #2: 60d step nail in utility pole 28' east of C 162nd St. W. and 26' north of C of Maple. Elev. = 1417.99 NAVD88

P.V.I.
 Elev. = 1431.41
 No V.C.

Baseline = CL Ciderbluff

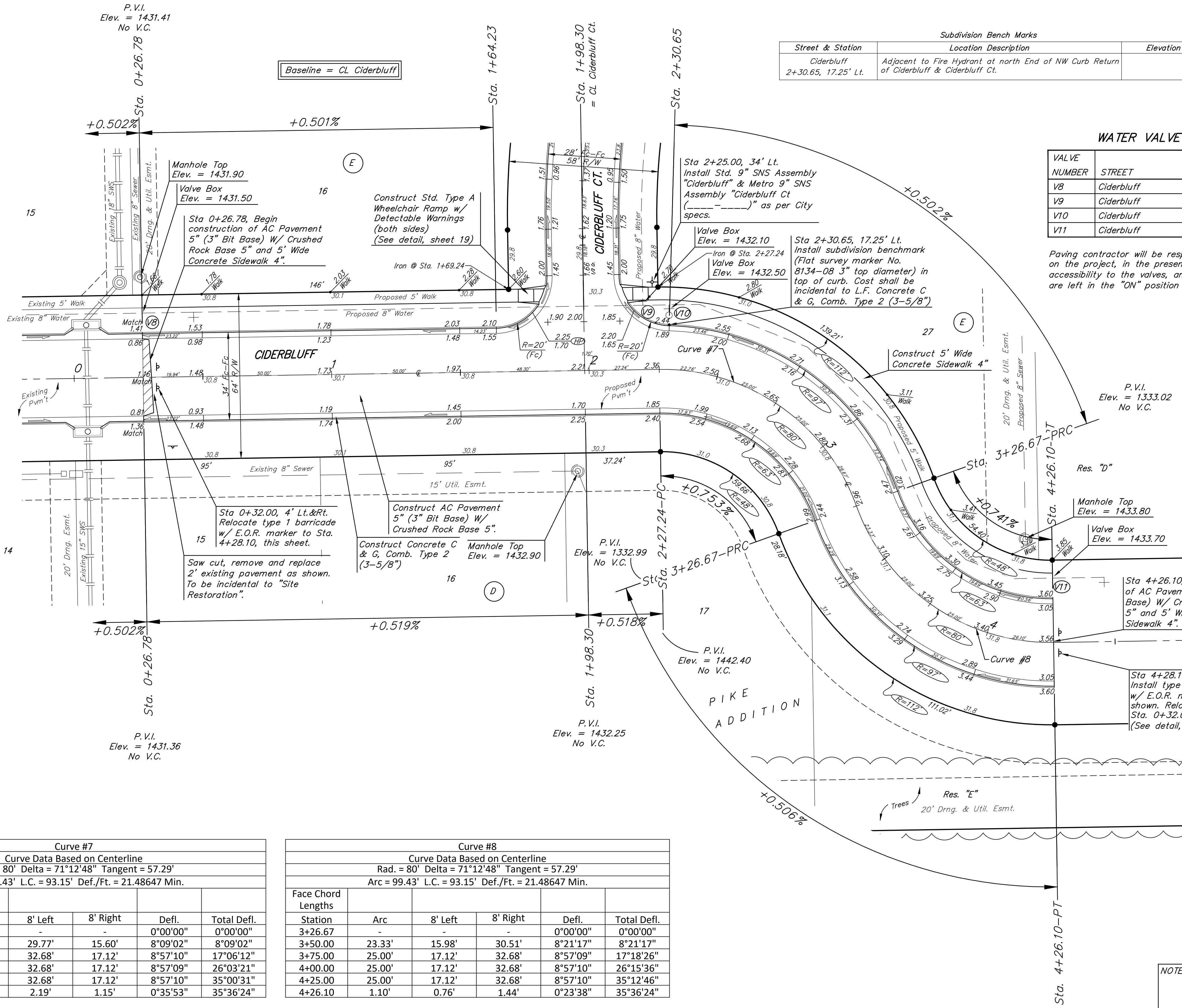
Subdivision Bench Marks		
Street & Station	Location Description	Elevation
Ciderbluff 2+30.65, 17.25' Lt.	Adjacent to Fire Hydrant at north End of NW Curb Return of Ciderbluff & Ciderbluff Ct.	



WATER VALVE LOCATION TABLE

VALVE NUMBER	STREET	BASILINE STATION	OFFSET DISTANCE	OFFSET DIRECTION
V8	Ciderbluff	0+26.78	25'	Lt.
V9	Ciderbluff	2+21.25	25'	Lt.
V10	Ciderbluff	2+30.65	25'	Lt.
V11	Ciderbluff	4+26.10	25'	Lt.

Paving contractor will be responsible to operate all water valves on the project, in the presence of the inspector, to ensure accessibility to the valves, and that all valves (except blowoffs) are left in the "ON" position when the project is completed.



Curve #7					
Curve Data Based on Centerline					
Rad. = 80' Delta = 71°12'48" Tangent = 57.29'					
Arc = 99.43' L.C. = 93.15' Def./Ft. = 21.48647 Min.					
Face Chord Lengths					
Station	Arc	8' Left	8' Right	Defl.	Total Defl.
2+27.24	-	-	-	0°00'00"	0°00'00"
2+50.00	22.76'	29.77'	15.60'	8°09'02"	8°09'02"
2+75.00	25.00'	32.68'	17.12'	8°57'10"	17°06'12"
3+00.00	25.00'	32.68'	17.12'	8°57'09"	26°03'21"
3+25.00	25.00'	32.68'	17.12'	8°57'10"	35°00'31"
3+26.67	1.67'	2.19'	1.15'	0°35'53"	35°36'24"

Curve #8					
Curve Data Based on Centerline					
Rad. = 80' Delta = 71°12'48" Tangent = 57.29'					
Arc = 99.43' L.C. = 93.15' Def./Ft. = 21.48647 Min.					
Face Chord Lengths					
Station	Arc	8' Left	8' Right	Defl.	Total Defl.
3+26.67	-	-	-	0°00'00"	0°00'00"
3+50.00	23.33'	15.98'	30.51'	8°21'17"	8°21'17"
3+75.00	25.00'	17.12'	32.68'	8°57'09"	17°18'26"
4+00.00	25.00'	17.12'	32.68'	8°57'10"	26°15'36"
4+25.00	25.00'	17.12'	32.68'	8°57'10"	35°12'46"
4+26.10	1.10'	0.76'	1.44'	0°23'38"	35°36'24"

NOTE: ROLL TYPE CURB & CUTTER (TYPE 2) TO BE CONSTRUCTED ON THE PAVEMENT SHOWN ON THIS SHEET. TOP OF CURB ELEVATIONS ARE GIVEN FOR FULL HEIGHT CURB (TYPE 4).