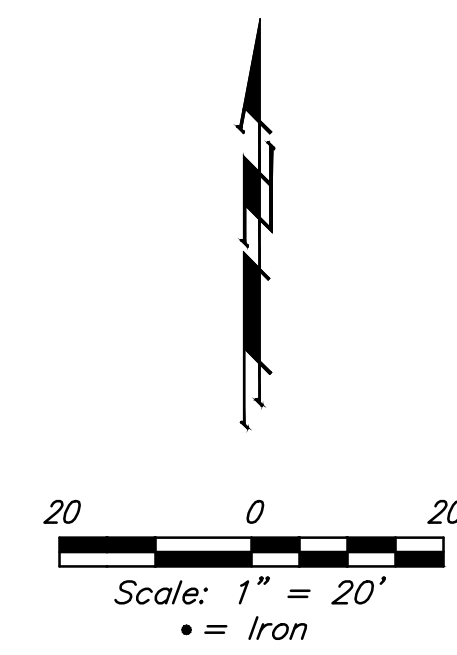


BENCHMARKS:
 BM #1: City of Wichita disc top of headwall of RCBC 660± east of the SE Cor. of the SE 1/4, SEC. 22, TWP. 27-S, R-2-W. Elev. = 1410.27 NAVD88

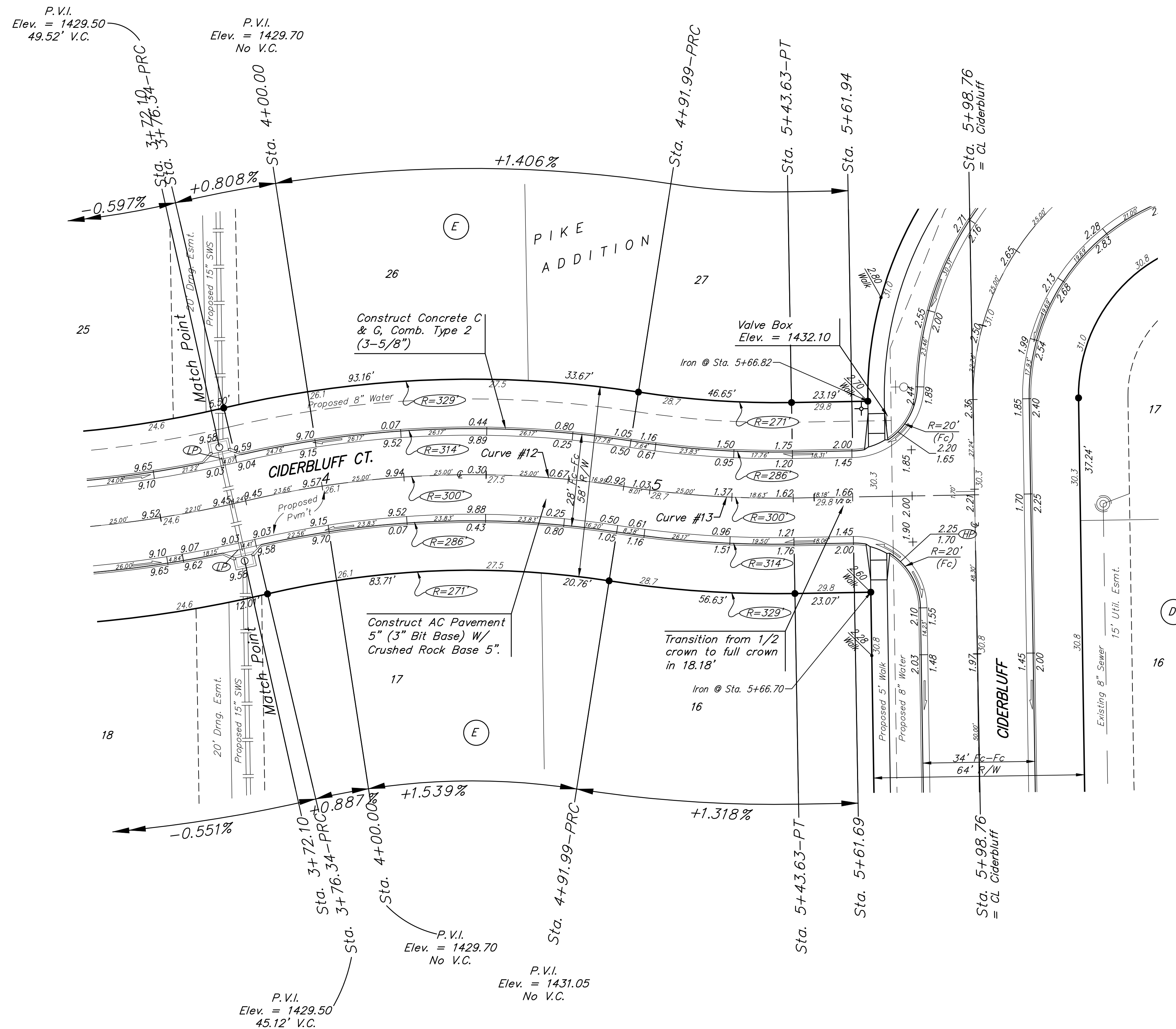
BM #2: 60d step nail in utility pole 28' east of CL 162nd St. W. and 26' north of CL of Maple. Elev. = 1417.99 NAVD88

Baseline = CL Ciderbluff Ct.



Curve #12					
Curve Data Based on Centerline					
Rad. = 300' Delta = 22°05'15" Tangent = 58.55'					
Arc = 115.65' L.C. = 114.94' Def./Ft. = 5.72925 Min.					
Face Chord Lengths					
Station	Arc	8' Left	8' Right	Defl.	Total Defl.
3+76.34	-	-	-	0°00'00"	0°00'00"
4+00.00	23.66'	25.39'	21.92'	2°15'34"	2°15'34"
4+25.00	25.00'	26.83'	23.16'	2°23'14"	4°38'48"
4+50.00	25.00'	26.83'	23.16'	2°23'14"	7°02'02"
4+75.00	25.00'	26.83'	23.16'	2°23'15"	9°25'17"
4+91.99	16.99'	18.23'	15.74'	1°37'20"	11°02'37"

Curve #13					
Curve Data Based on Centerline					
Rad. = 300' Delta = 9°51'43" Tangent = 25.88'					
Arc = 51.64' L.C. = 51.57' Def./Ft. = 5.72925 Min.					
Face Chord Lengths					
Station	Arc	8' Left	8' Right	Defl.	Total Defl.
4+91.99	-	-	-	0°00'00"	0°00'00"
5+00.00	8.01'	7.42'	8.60'	0°45'53"	0°45'53"
5+25.00	25.00'	23.16'	26.82'	2°23'14"	3°09'07"
5+43.63	18.63'	17.26'	19.99'	1°46'45"	4°55'52"



NOTE: ROLL TYPE CURB & GUTTER (TYPE 2) TO BE CONSTRUCTED ON THE PAVEMENT SHOWN ON THIS SHEET. TOP OF CURB ELEVATIONS ARE GIVEN FOR FULL HEIGHT CURB (TYPE 4).