

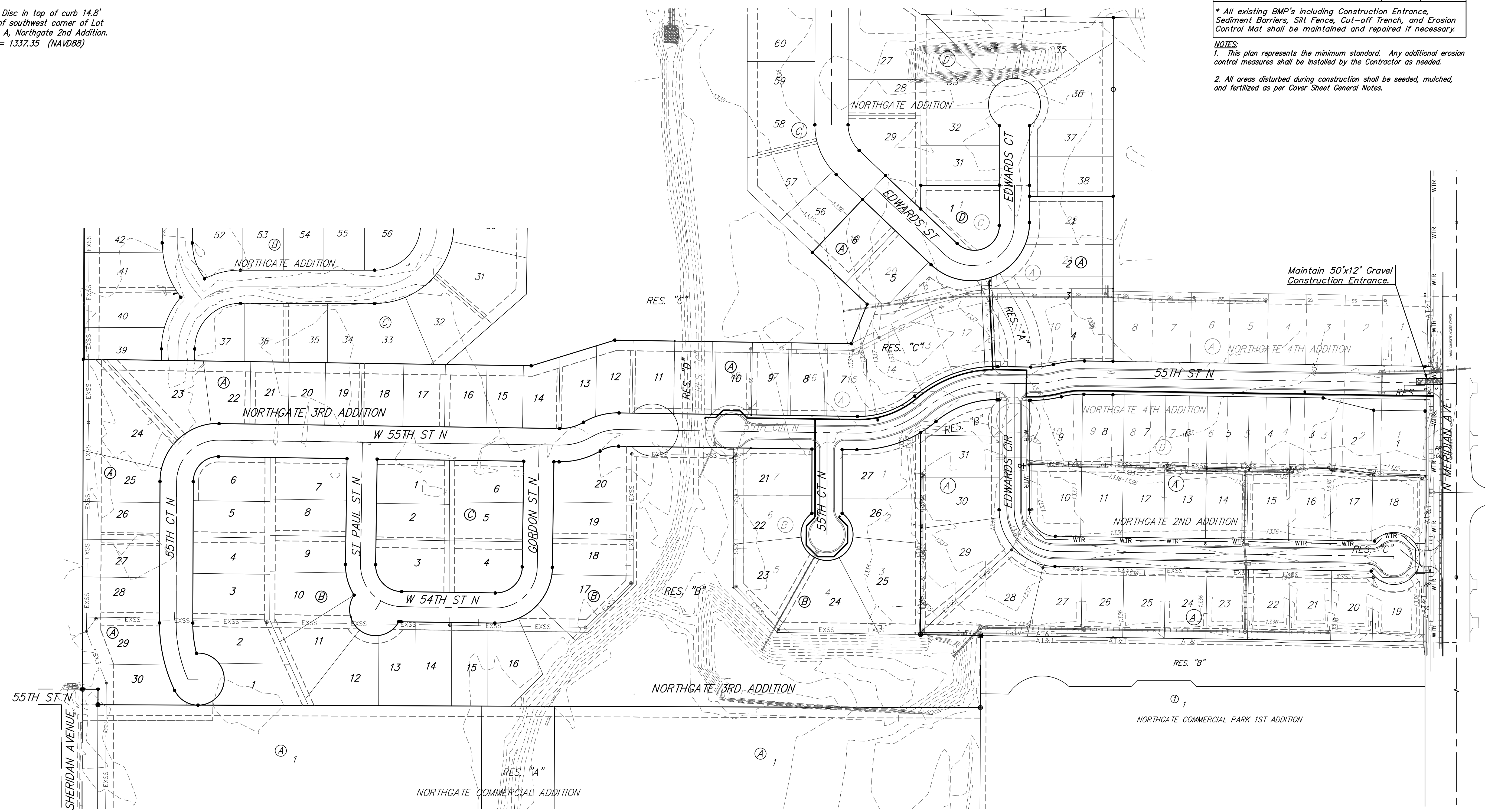
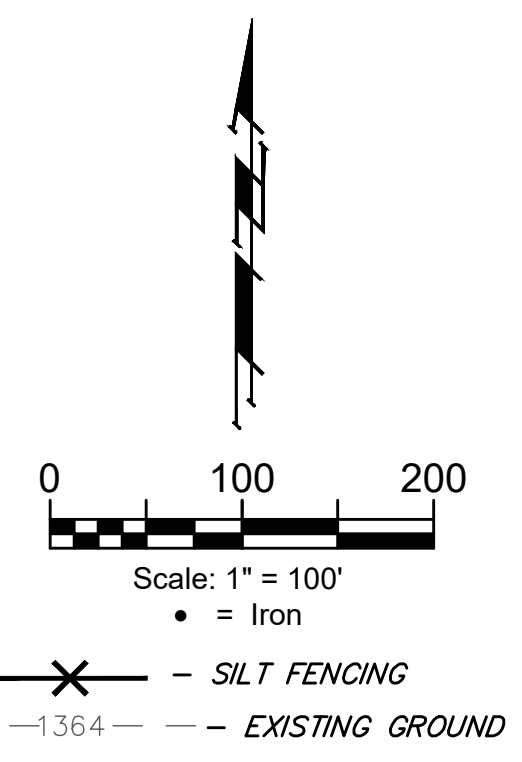
BENCHMARKS:
 Chiseled square, center of storm water sewer vault, west side of Meridian, 145' S. & 30.6' E. of the NE Cor., Lot 1, Block A, Northgate 2nd Addition.
 Elev. = 1334.49 (NAVD88)

Brass Disc in top of curb 14.8' west of southwest corner of Lot 9, Blk A, Northgate 2nd Addition.
 Elev. = 1337.35 (NAVD88)

EROSION CONTROL MEASURE	INSTALL	MAINTAIN
CONSTRUCTION ENTRANCE (EA)	0	1
MAINTAIN EROSION CONTROL BMP's (LS)	0	1

* All existing BMP's including Construction Entrance, Sediment Barriers, Silt Fence, Cut-off Trench, and Erosion Control Mat shall be maintained and repaired if necessary.

- NOTES:**
- This plan represents the minimum standard. Any additional erosion control measures shall be installed by the Contractor as needed.
 - All areas disturbed during construction shall be seeded, mulched, and fertilized as per Cover Sheet General Notes.



	Northgate 3rd Addition Erosion Control Plan Water Distribution System	
	Baughman Company, P.A. 315 Ellis St. Wichita, KS 67211 P 316-262-7271 F 316-262-0149 ENGINEERING SURVEYING PLANNING LANDSCAPE ARCHITECTURE	
PROJECT NUMBER 448-2020-004499	DESIGN AEG	DRAWN JAK
REVISIONS:	APPROVED DATE June 15, 2020	SCALE Noted SHEET
		7 OF 14