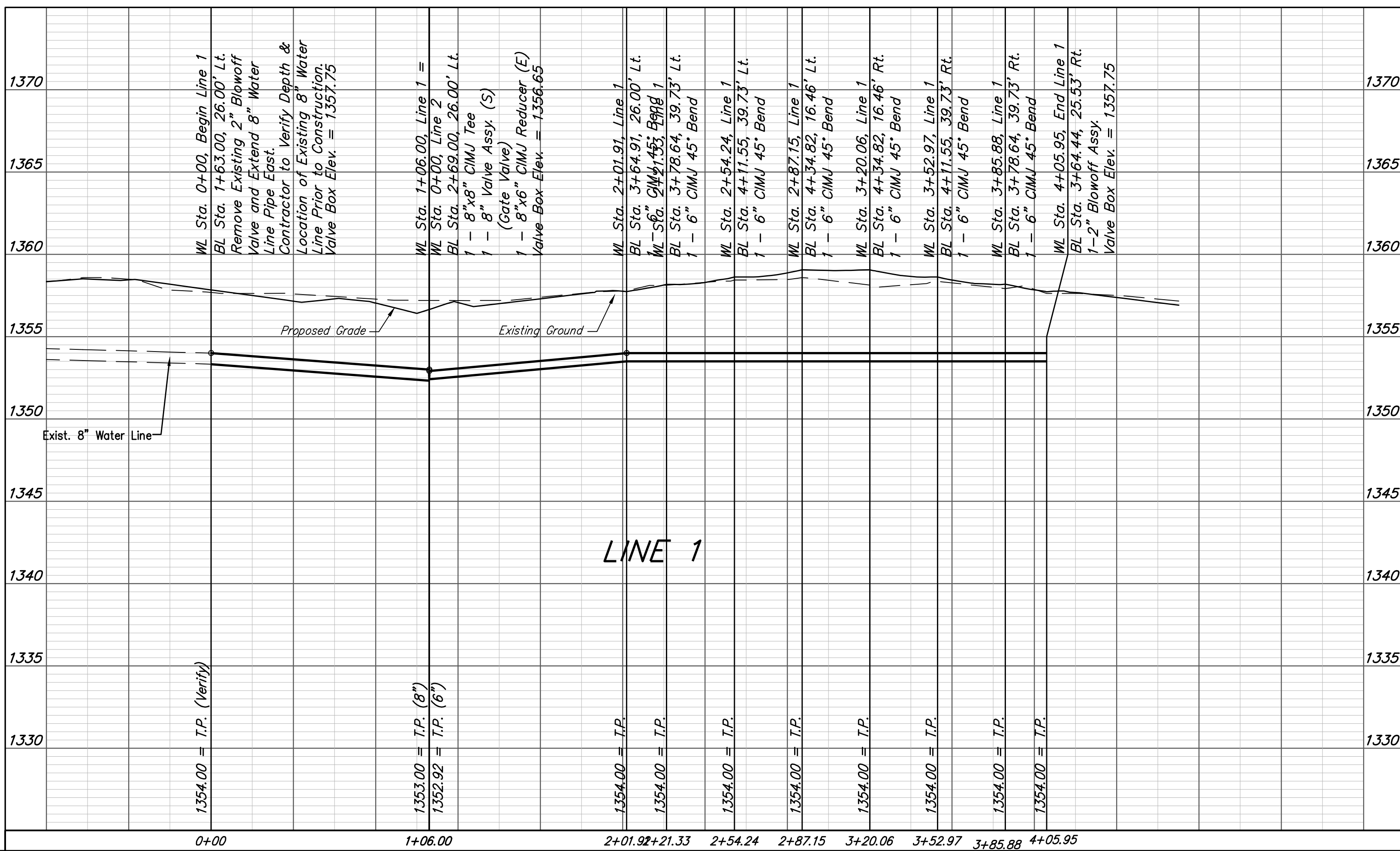
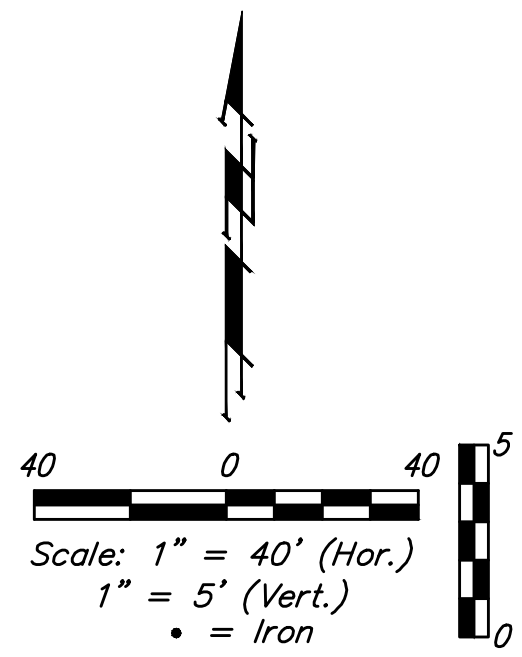
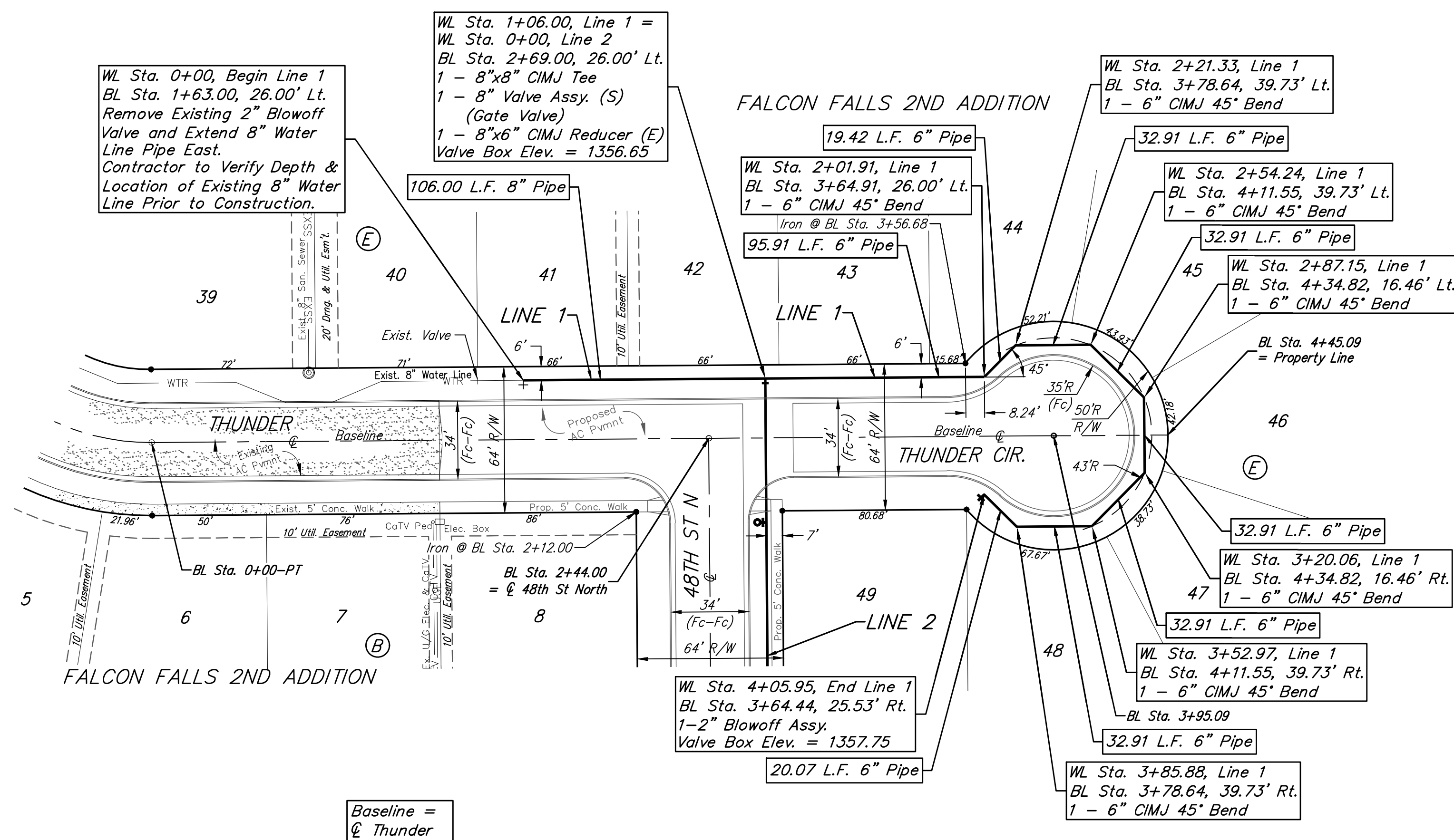


**BENCHMARKS:**

BM #1: City of Wichita BM Disk  
South end of East return  
Marblefalls & 48th ST N  
SW of the NW corner of Lot 4,  
Block A, Falcon Falls 2nd  
Addition  
Elev. = 1354.34 (NGVD29)

BM #2: "□" Top of Curb NE of  
the NW corner of Lot 5, Block  
B, Falcon Falls 2nd Addition  
Elev. = 1359.13 (NGVD29)



		Falcon Falls 2nd Addition - Phase 4B	
		<b>LINE 1</b>	
Baughman Company, P.A. 315 Ellis St. Wichita, KS 67211 P 316-262-7271 F 316-262-0149		ENGINEERING   SURVEYING   PLANNING   LANDSCAPE ARCHITECTURE	
PROJECT NUMBER 448-9090S	DESIGN AEG	DRAWN JAK	DATE June 26, 2020
REVISIONS:	SCALE Noted		
	SHEET <b>4 OF 14</b>		