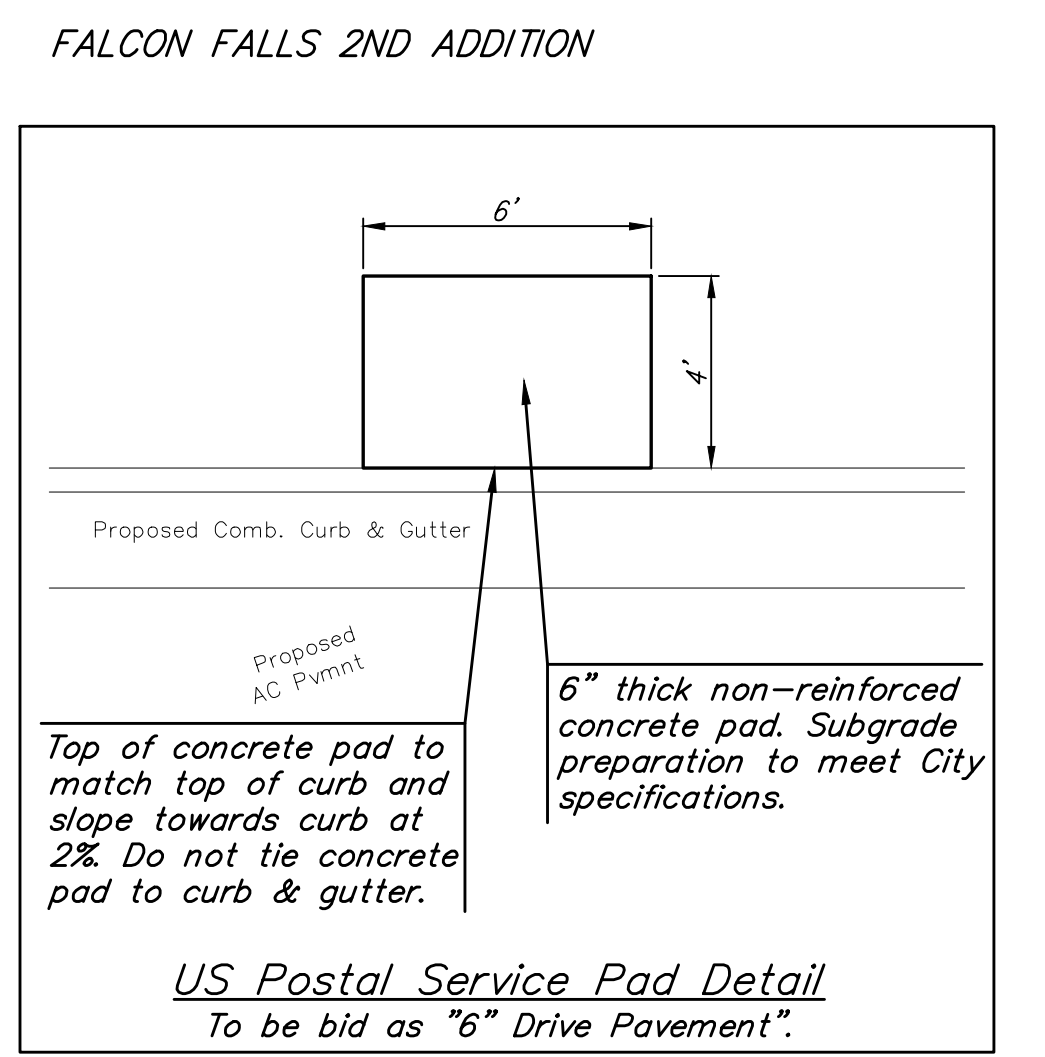
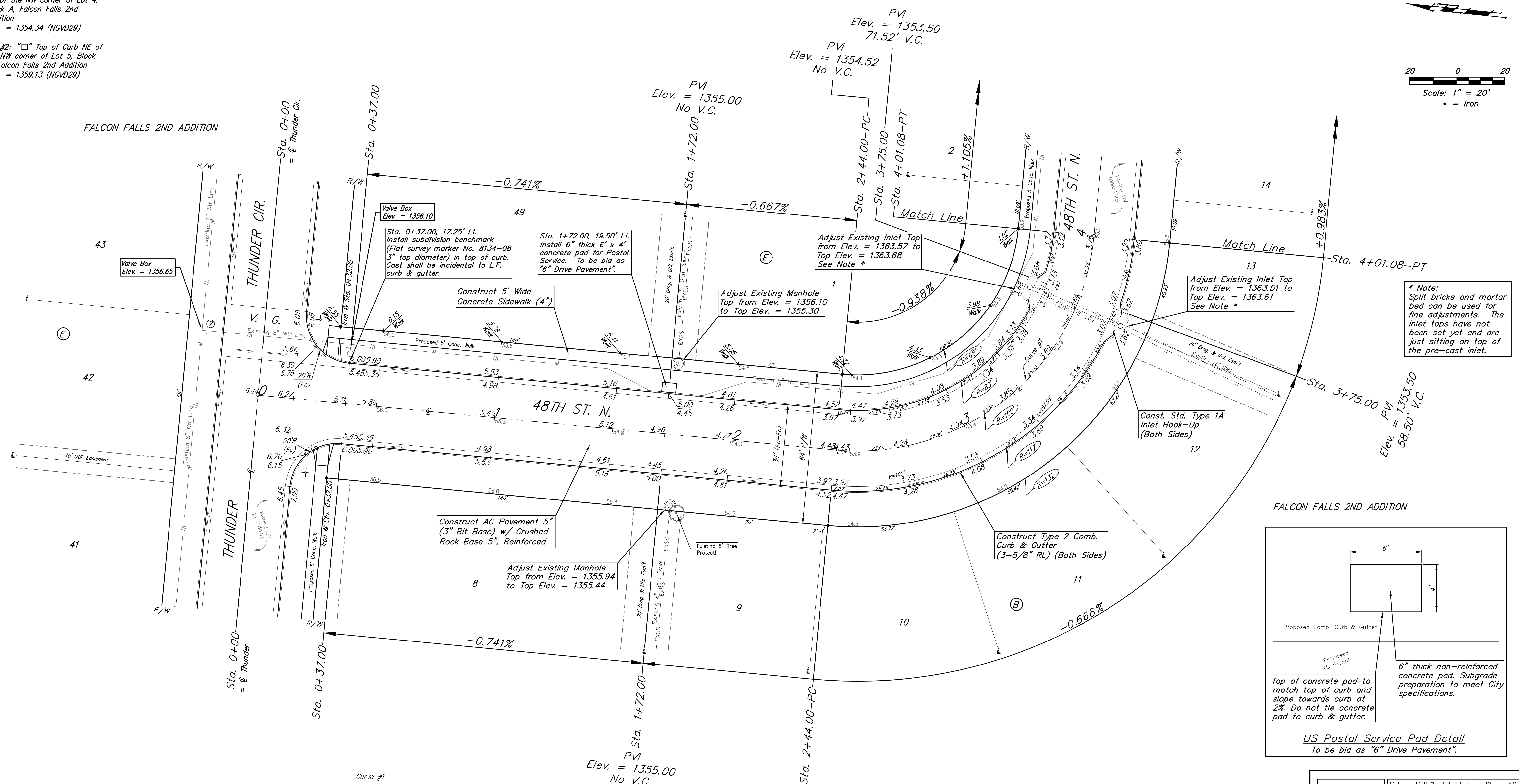
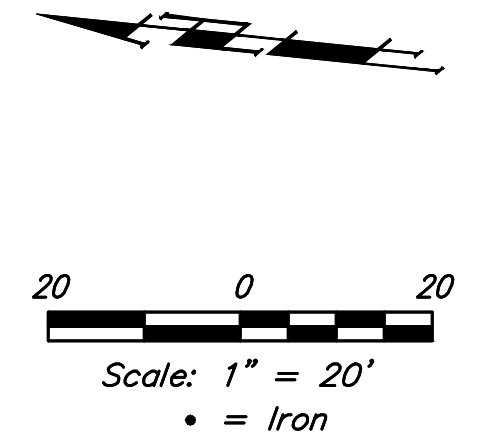


BENCHMARKS:
 BM #1: City of Wichita BM Disk
 South end of East return
 Marblefalls & 48th ST N
 SW of the NW corner of Lot 4,
 Block A, Falcon Falls 2nd
 Addition
 Elev. = 1354.34 (NGVD29)
 BM #2: "□" Top of Curb NE of
 the NW corner of Lot 5, Block
 B, Falcon Falls 2nd Addition
 Elev. = 1359.13 (NGVD29)



Curve #1
 Curve Data Based on Centerline
 Rad. = 100' Delta = 90°00'00" Tangent = 100.00'
 Arc = 157.08' L.C. = 141.42' Def./Ft. = 17.18869 Min.

Station	Arc	Face Chord Lengths		Defl.	Total Defl.
		8' Left	8' Right		
2+44.00	-	-	-	0'00'00"	0'00'00"
2+50.00	6.00'	4.50'	7.50'	1'43'08"	1'43'08"
2+75.00	25.00'	18.70'	31.17'	7'09'43"	8'52'51"
3+00.00	25.00'	18.70'	31.17'	7'09'43"	16'02'34"
3+25.00	25.00'	18.70'	31.17'	7'09'43"	23'12'17"
3+50.00	25.00'	18.70'	31.17'	7'09'43"	30'22'00"
3+75.00	25.00'	18.70'	31.17'	7'09'43"	37'31'43"
4+01.08	26.08'	19.50'	32.51'	7'28'17"	45'00'00"

Street & Station	Location Description	Elevation
48th St North 0+37.00, 17.25' Lt.	Adjacent to Fire Hydrant at South End of the East Return 48th St N & Thunder Cir, NW Cor., Lot 49, Blk E, Falcon Falls 2nd Addn.	

Roll type curb & gutter to be constructed on the pavement on this sheet.
 Top of curb elevation are given for full height curb.

Baughman Falcon Fall 2nd Addition - Phase 4B
48TH ST N
 Sta. 0+00 to Sta. 4+01.08

Baughman Company, P.A. 315 Ellis St. Wichita, KS 67211 P 316-262-7271 F 316-262-0149
 ENGINEERING | SURVEYING | PLANNING | LANDSCAPE ARCHITECTURE

PROJECT NUMBER: 472-85468 DESIGN: AEG DRAWN: JAK
 APPROVED: DATE: June 29, 2020
 REVISIONS: SCALE: Noted SHEET: 8 OF 22

C:\Projects\Falcon Falls 2nd Phase 4B\STR_2024\575\STR_PLANS.dwg