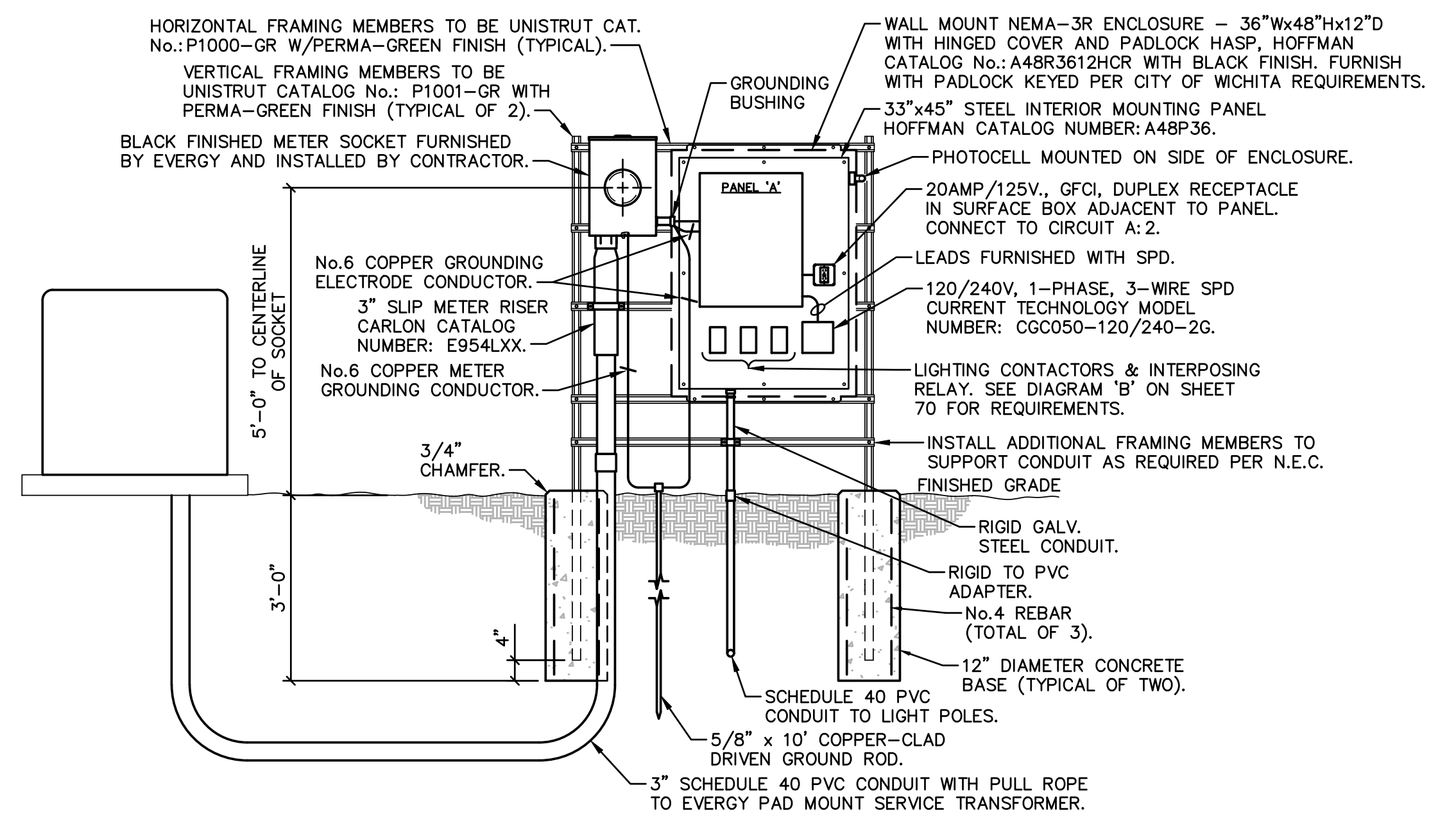
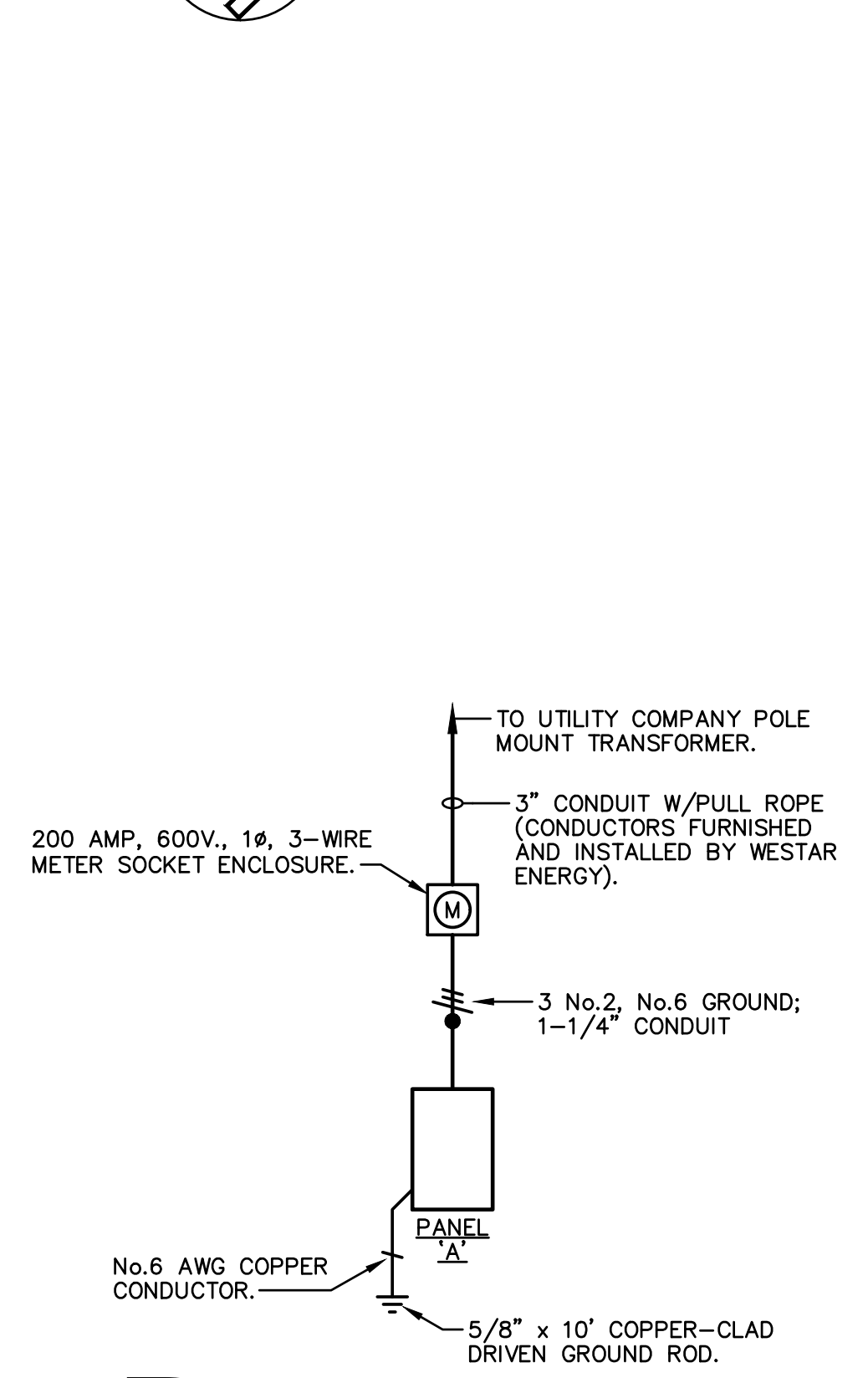


A LIGHTING PLAN - B
 1" = 10'-0"
 0 5' 10' 20'
 NORTH

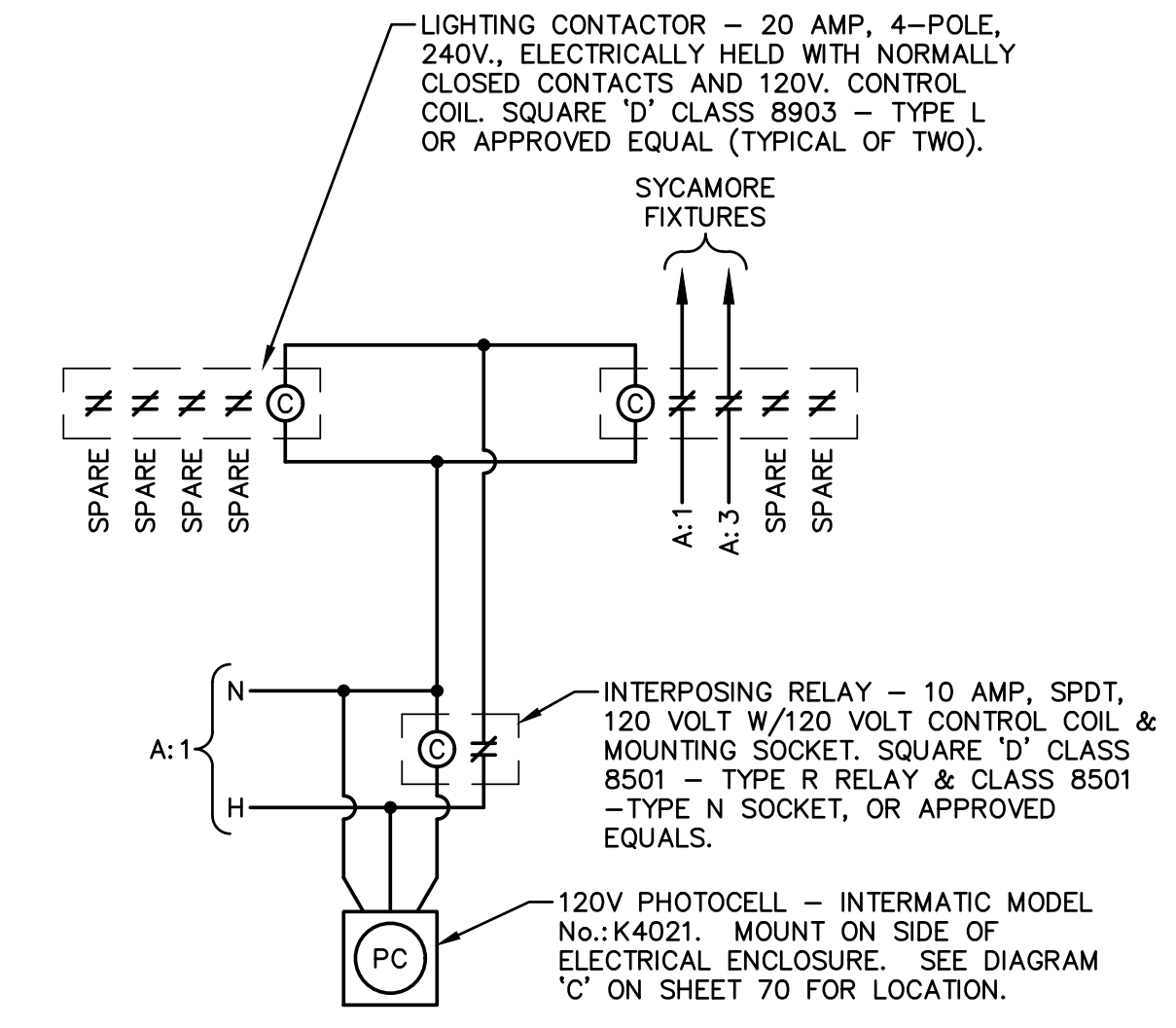


- NOTES:**
- FRAMING MEMBERS AND EQUIPMENT SHALL BE FASTENED TOGETHER USING UNISTRUT CHANNEL NUTS AND SCREWS.
 - ALL ENCLOSURES, EXPOSED CONDUIT AND FRAMING MEMBERS TO BE PAINTED BLACK.
 - SERVICE INSTALLATION REQUIREMENTS TO CONFORM WITH UTILITY COMPANY STANDARDS. COORDINATE WITH EVERGY - CONTACT: MR. SHANE PRICE, TELEPHONE: (316) 261-6315.

C PANEL 'A' SERVICE DIAGRAM
 1/2" = 1'-0"
 0 1' 2' 4'

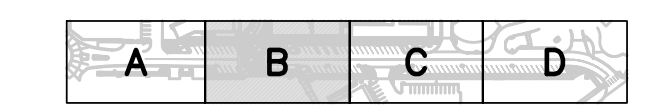


D ONE-LINE DIAGRAM
 N.T.S.



NOTE: CONTACTORS AND RELAY TO BE MOUNTED IN ENCLOSURE ADJACENT TO PANEL 'A', SEE DIAGRAM 'C' ON SHEET 70 FOR LOCATIONS.

B LIGHTING CONTROL DIAGRAM
 N.T.S.



KEY PLAN
 N.T.S.

Tran Systems
 245 NORTH WACO
 SUITE 222
 WICHITA, KANSAS 67202
 PHONE: 316-303-3000
 FAX: 316-462-5629

CONSULTANTS:
LK ARCHITECTURE, INC.
 345 RIVERVIEW
 SUITE 200
 WICHITA, KANSAS 67208
 PHONE: 316-268-0230

SYCAMORE STREET IMPROVEMENTS
 WICHITA, KANSAS
CITY OF WICHITA

REVISIONS:	DESCRIPTION	DATE	MARK

PROJ NO.: 472-85284
 SCALE: 1" = 10'-0"
 DATE: 5/21/2020
 DESIGNED BY: S. WIEBE
 DRAWN BY: S. WIEBE
 CHECKED BY: T. LEWIS

SHEET TITLE:
SITE ELECTRICAL PLAN - B

SHEET NO.
70
 SHEET 70 OF 92