

**BENCHMARK:**  
 "+ " cut in the top of curb adjacent to the common lot line of Lots 3-4, BLK D, Sandcrest 3rd Add.  
 Elev = 1327.57 (NAVD88)

"+" cut in the front top center of the westerly curb inlet 131' North of the center line of Curtis Ct. in Curtis St. in Sandcrest Add.  
 Elev = 1321.79 (NAVD88)

EROSION CONTROL MEASURE	INSTALL	MAINTAIN
BACK OF CURB PROTECTION (LF)	0	0
CONSTRUCTION ENTRANCE (EA)	0	1
CURB INLET BARRIER (EA)	0	0
CUT-OFF TRENCH (LF)	0	0
DROP INLET PROTECTION (EA)	0	0
SILT FENCE (LF)	0	729
EROSION CONTROL MAT (SY)	0	0
MAINTAIN EROSION CONTROL BMP's (LS)	0	0

\* ALL EXISTING BMPs INCLUDING CONSTRUCTION ENTRANCE, SEDIMENT BARRIERS, SILT FENCE, CUT-OFF TRENCH, AND EROSION CONTROL MAT SHALL BE MAINTAINED AND REPAIRED IF NECESSARY.

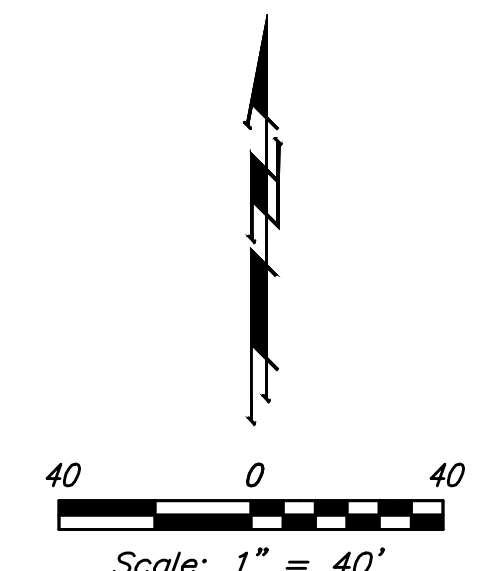
**NOTES:**

1. Contractor shall make sure all erosion control is in place before project is accepted. This plan represents the minimum standard. Any additional erosion control measures shall be installed by the Contractor as needed.

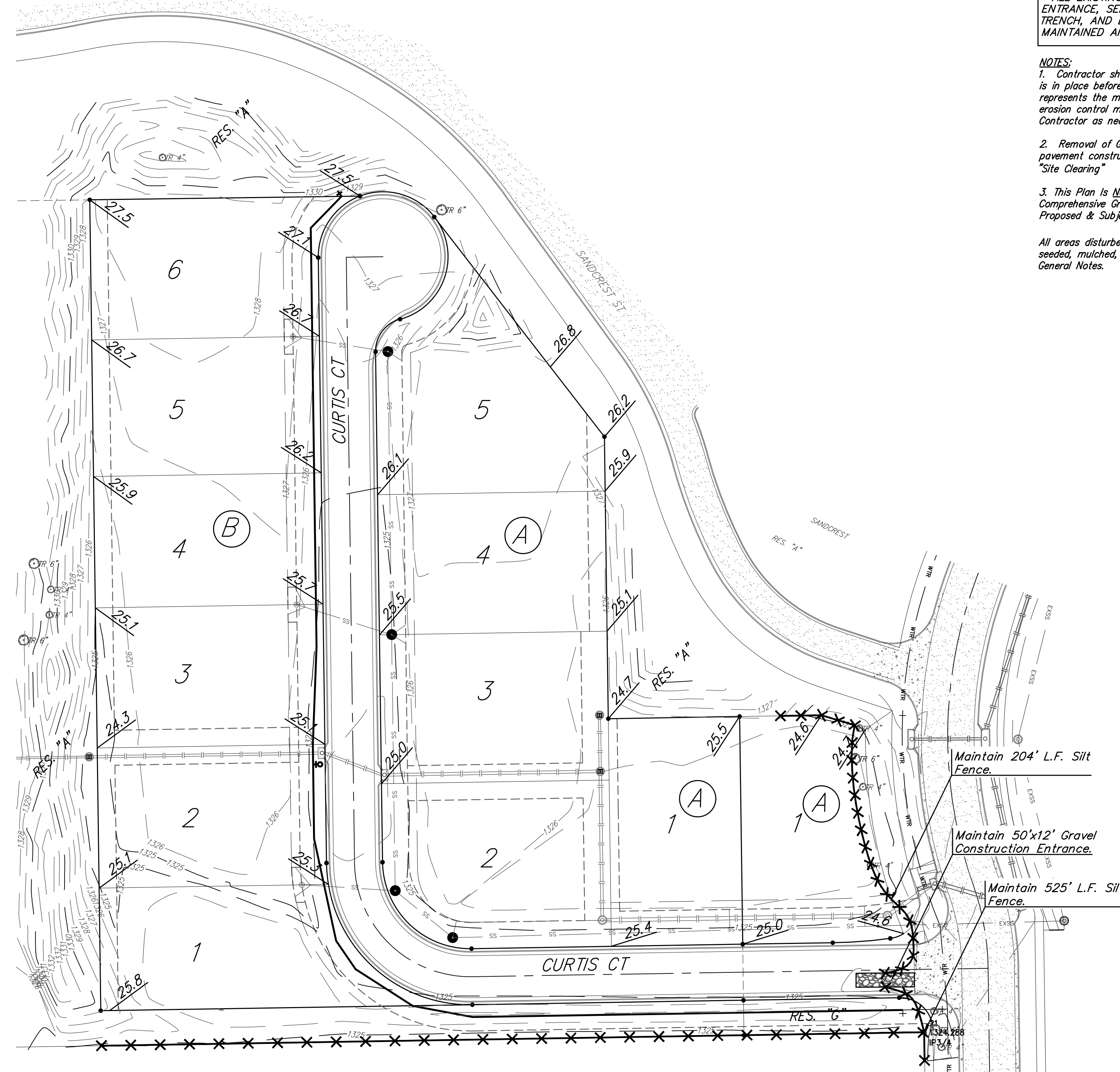
2. Removal of Gravel Construction Entrance for pavement construction shall be included in bid item "Site Clearing"

3. This Plan is Not To Be Used As A Comprehensive Grading Plan. All Spot Elevations Are Proposed & Subject To Change.

All areas disturbed during construction shall be seeded, mulched, and fertilized as per Cover Sheet General Notes.



Existing Ground ——— 1.364 ———  
 X — SILT FENCING



	SC Addition	
	<b>Erosion Control</b> Sanitary Sewer Improvements	
<small>Baughman Company, P.A. 315 Ellis St. Wichita, KS 67211 P 316-262-7271 F 316-262-0149          ENGINEERING   SURVEYING   PLANNING   LANDSCAPE ARCHITECTURE</small>		
PROJECT NUMBER <b>468</b>	DESIGN AEG	DRAWN CDW
REVISIONS:	APPROVED	DATE 6/27/20
SCALE Noted		SHEET <b>6 OF 13</b>