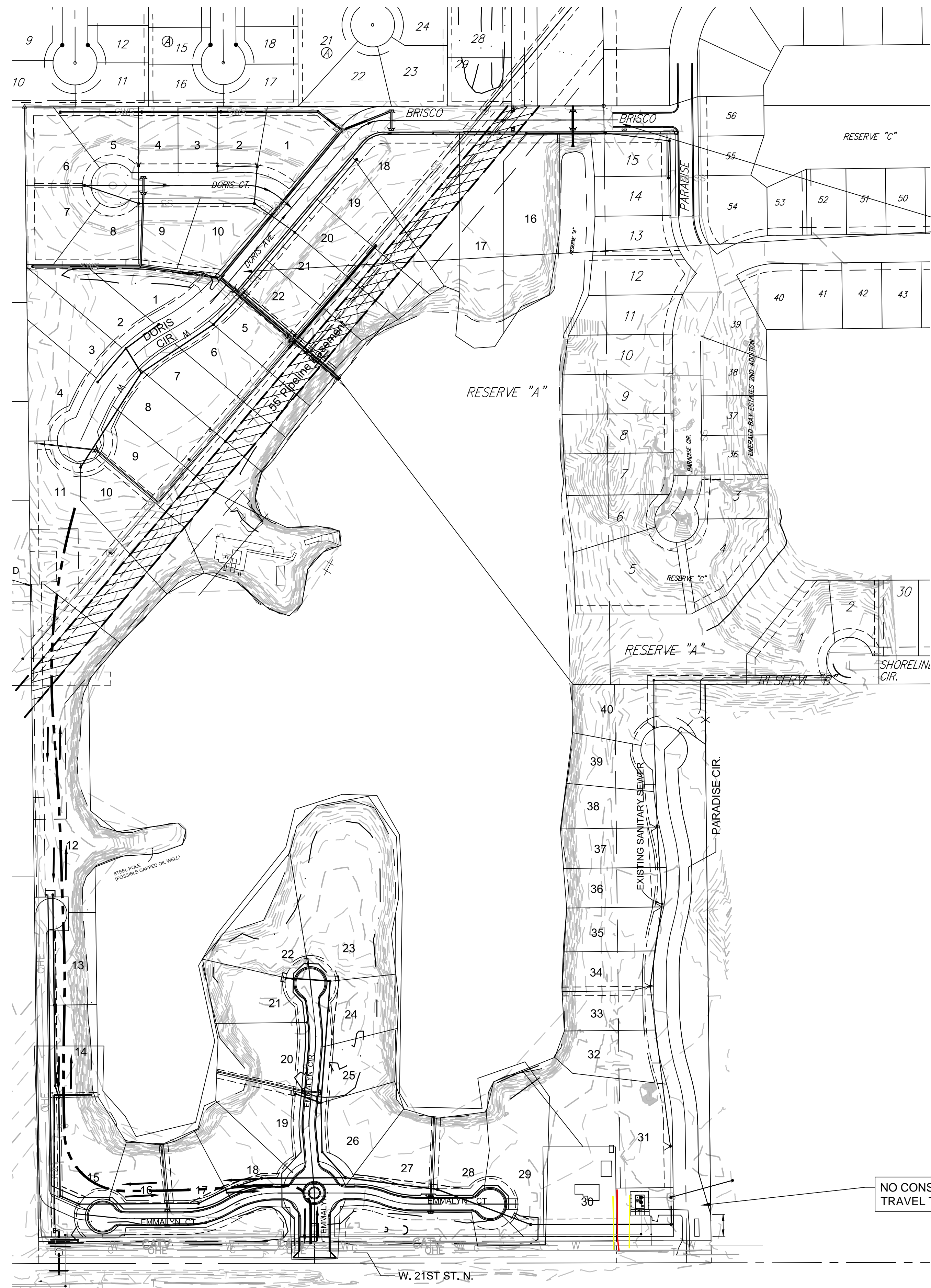


File: L:\2019\19T41016 - Emerald Bay 4th PH 2\Drawings\C3D\Storm Sewer\EB3 Haul Routes.dwg, Last Save: 5/5/2020 10:05 AM, Last saved by: Dstandrich  
 Last plotted by: Standrich, Darryl R., Plot Style: ---, Plot Date: 5/5/2020 10:56 AM, Plotter Used: None



**PIPELINE CROSSING NOTES:**

**CONTACT INFORMATION:**

KPC PIPELINE - GARRETT BENSON - 316-217-6236  
 PHILLIPS 66 PIPELINE - ANDRES MARTINEZ - 316-655-5058

1. Contractor shall contact both pipeline companies a minimum of 2 weeks prior to construction.
2. Prior to any construction, vehicles, or equipment crossing the pipeline, an on-site safety meeting with Phillips 66 Pipeline and KPC Pipeline will be required.
3. At the meeting, crossing locations and requirement will be reviewed.
4. Crossing of the pipeline by vehicles or equipment shall only be allowed at locations approved by the pipeline representative.
5. Contact pipeline representatives any time construction will occur within the pipeline easement.
6. Orange safety fence shall be installed on the easement line of the pipelines prior to any construction activity to reduce access to only the prior agreed to crossing locations.
7. No vibratory equipment shall be used within the pipeline easement.

Haul Route

NO CONSTRUCTION TRAFFIC IS ALLOWED TO TRAVEL THROUGH EMERALD BAY ADDITION.

NO CONSTRUCTION TRAFFIC IS ALLOWED TO TRAVEL THROUGH EMERALD BAY ADDITION.



© 2020 GARVER, LLC  
 THIS DOCUMENT, ALONG WITH THE IDEAS AND DESIGNS CONVEYED HEREIN, SHALL BE CONSIDERED INSTRUMENTS OF PROFESSIONAL SERVICE AND ARE PROPERTY OF GARVER, LLC. ANY USE, REPRODUCTION, OR DISTRIBUTION OF THIS DOCUMENT, ALONG WITH THE IDEAS AND DESIGN CONTAINED HEREIN, IS PROHIBITED UNLESS AUTHORIZED IN WRITING BY GARVER, LLC OR EXPLICITLY ALLOWED IN THE GOVERNING PROFESSIONAL SERVICES AGREEMENT FOR THIS WORK.

8535 E. 21st St. N.  
 Suite 130  
 Wichita, KS 67206  
 (316) 264-8008

REV.	DATE	DESCRIPTION	BY



CITY OF WICHITA  
 WICHITA, KANSAS  
 EMERALD BAY 4th ADD.  
 PHASE 2 - SWS

**Pipeline information**

JOB NO.: 19T41016  
 DATE: MAY 2020  
 DESIGNED BY: EJJ  
 DRAWN BY: DRS

BAR IS ONE INCH ON ORIGINAL DRAWING  
 0 1"  
 IF NOT ONE INCH ON THIS SHEET, ADJUST SCALES ACCORDINGLY.

DRAWING NUMBER

SHEET NUMBER **2 OF 30**