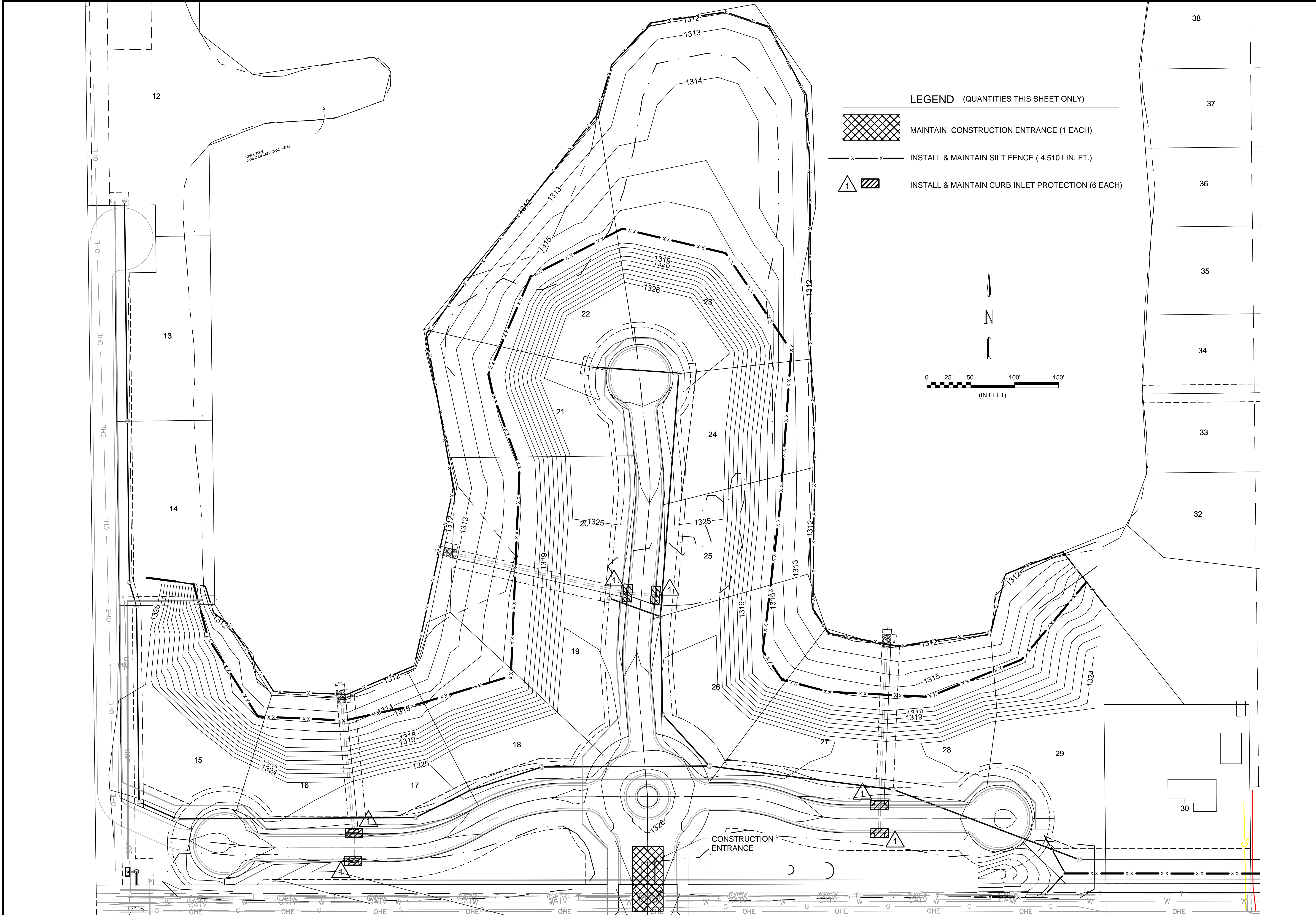



File: L:\2019\19T41016 - Emerald Bay 4th PH 2Drawings\C3d\Storm Sewer\EROSION CONTROL PLAN SOUTH-SS.dwg Last Save: 5/5/2020 10:52 AM Last saved by: Distandrich
Last plotted by: Standrich, Darryl R Plot Style: --- Plot Date: 5/5/2020 11:06 AM Plotter used: None






© 2020 GARVER, LLC
THIS DOCUMENT, ALONG WITH THE IDEAS AND DESIGNS CONVEYED HEREIN, SHALL BE CONSIDERED INSTRUMENTS OF PROFESSIONAL SERVICE AND ARE PROPERTY OF GARVER, LLC. ANY USE, REPRODUCTION, OR DISTRIBUTION OF THIS DOCUMENT, ALONG WITH THE IDEAS AND DESIGN CONTAINED HEREIN, IS PROHIBITED UNLESS AUTHORIZED IN WRITING BY GARVER, LLC OR EXPLICITLY ALLOWED IN THE GOVERNING PROFESSIONAL SERVICES AGREEMENT FOR THIS WORK.

8535 E. 21st St. N.
Suite 130
Wichita, KS 67206
(316) 264-8008

BY	DESCRIPTION	DATE	REV.



CITY OF WICHITA
WICHITA, KANSAS

EMERALD BAY 4th ADD.
PHASE 2 - SWS

EROSION CONTROL PLAN SOUTH

JOB NO.: 19T41016
DATE: MAY 2020
DESIGNED BY: ----
DRAWN BY: ----

BAR IS ONE INCH ON ORIGINAL DRAWING
IF NOT ONE INCH ON THIS SHEET, ADJUST SCALES ACCORDINGLY.

DRAWING NUMBER

SHEET NUMBER **23** OF **30**