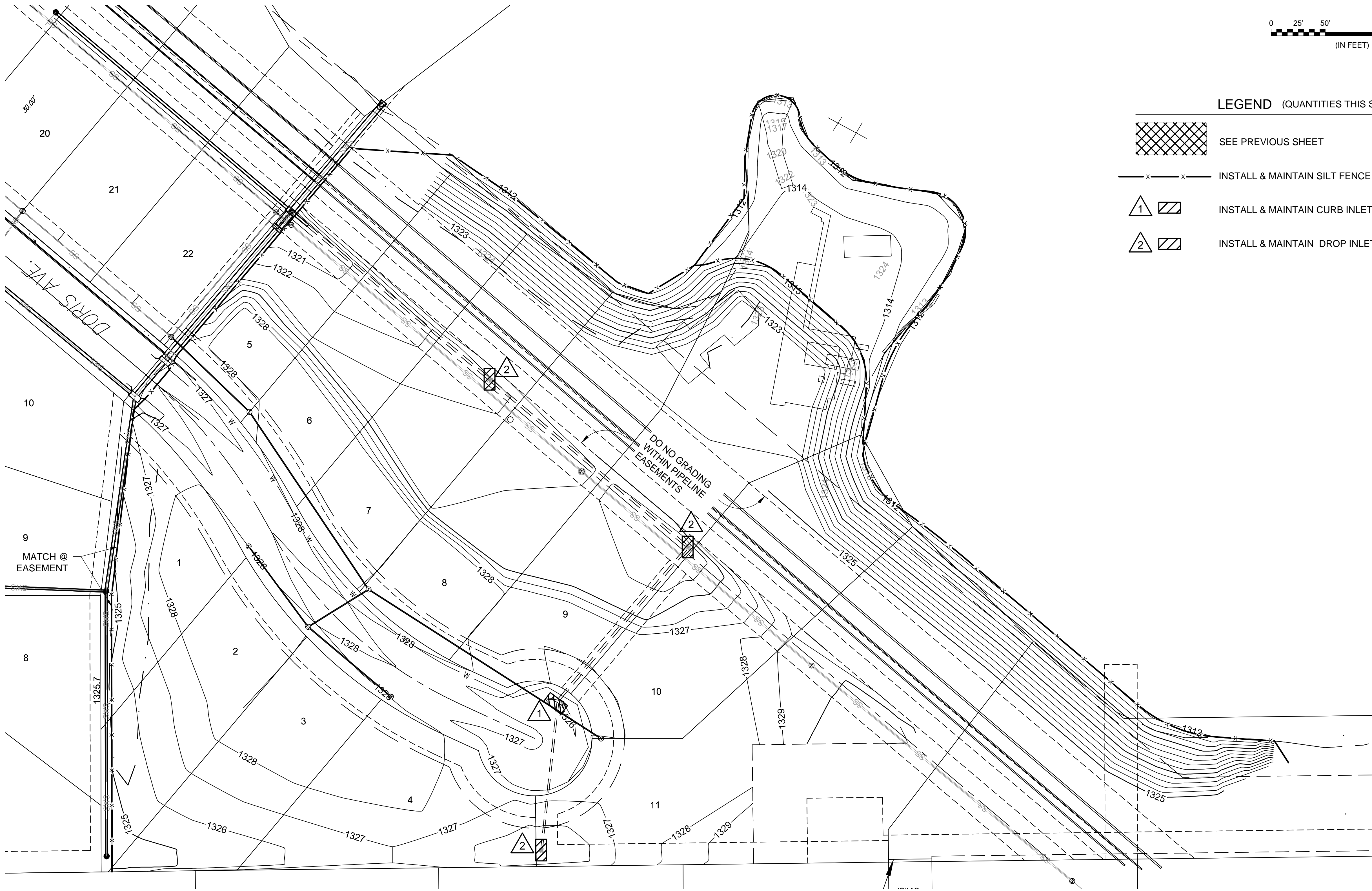


File: L:\2019\19T41016 - Emerald Bay 4th PH 2Drawings\C3d\Storm Sewer\EROSION CONTROL PLAN-NORTH.dwg Last Save: 5/1/2020 9:16 AM Last saved by: EUGlover
Last plotted by: Standrich, Darryl R Plot Style: 1:2.5849 Plot Date: 5/5/2020 11:07 AM Plotter used: None




EROSION CONTROL NORTH



© 2020 GARVER, LLC
THIS DOCUMENT, ALONG WITH THE
IDEAS AND DESIGNS CONVEYED
HEREIN, SHALL BE CONSIDERED
INSTRUMENTS OF PROFESSIONAL
SERVICE AND ARE PROPERTY OF
GARVER, LLC. ANY USE,
REPRODUCTION, OR DISTRIBUTION
OF THIS DOCUMENT, ALONG WITH
THE IDEAS AND DESIGN CONTAINED
HEREIN, IS PROHIBITED UNLESS
AUTHORIZED IN WRITING BY
GARVER, LLC OR EXPLICITLY
ALLOWED IN THE GOVERNING
PROFESSIONAL SERVICES
AGREEMENT FOR THIS WORK.

8535 E. 21st St. N.
Suite 130
Wichita, KS 67206
(316) 264-8008

REV.	DATE	DESCRIPTION	BY



CITY OF WICHITA
WICHITA, KANSAS

EMERALD BAY 4th ADD.
PHASE 2 - SWS

EROSION
CONTROL
PLAN NORTH

JOB NO.: 19T41016
DATE: MAY 2020
DESIGNED BY: ----
DRAWN BY: ----

BAR IS ONE INCH ON
ORIGINAL DRAWING
0 1'
IF NOT ONE INCH ON THIS SHEET,
ADJUST SCALES ACCORDINGLY.

DRAWING NUMBER

SHEET
NUMBER **24** OF **30**