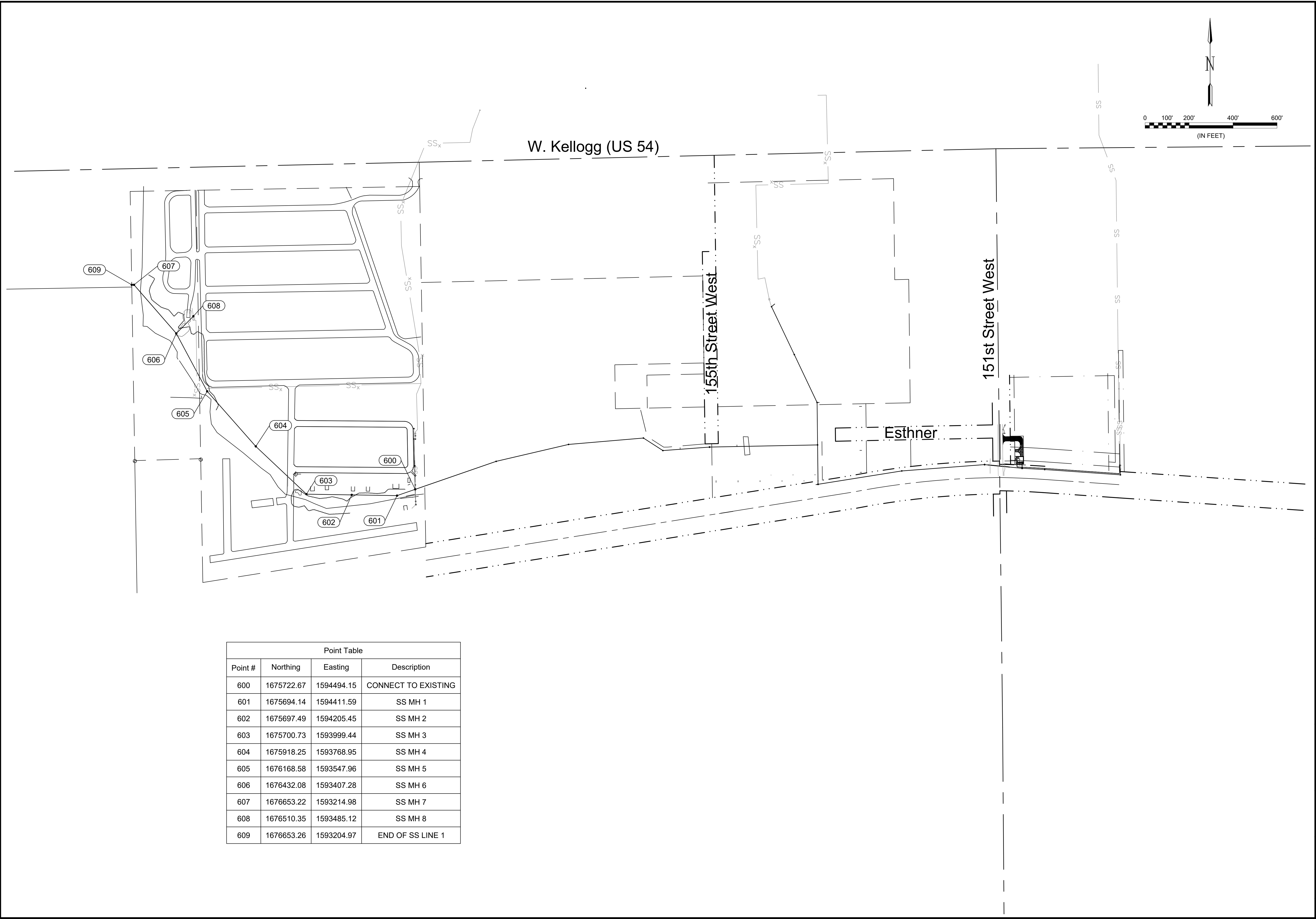


File: L:\2019\19T41008 - CoW Sanitary Sewer to LS47\Drawings\C3D\Plan Sheets\Bubble Map.dwg Last Save: 7/6/2020 12:35 PM Last saved by: MTDolechek  
 Last plotted by: Dolechek, Mark T. Plot Date: 7/24/2020 8:28 AM Plotter used: None



| Point Table |            |            |                     |
|-------------|------------|------------|---------------------|
| Point #     | Northing   | Easting    | Description         |
| 600         | 1675722.67 | 1594494.15 | CONNECT TO EXISTING |
| 601         | 1675694.14 | 1594411.59 | SS MH 1             |
| 602         | 1675697.49 | 1594205.45 | SS MH 2             |
| 603         | 1675700.73 | 1593999.44 | SS MH 3             |
| 604         | 1675918.25 | 1593768.95 | SS MH 4             |
| 605         | 1676168.58 | 1593547.96 | SS MH 5             |
| 606         | 1676432.08 | 1593407.28 | SS MH 6             |
| 607         | 1676653.22 | 1593214.98 | SS MH 7             |
| 608         | 1676510.35 | 1593485.12 | SS MH 8             |
| 609         | 1676653.26 | 1593204.97 | END OF SS LINE 1    |

© 2018 GARVER, LLC  
 THIS DOCUMENT, ALONG WITH THE IDEAS AND DESIGNS CONVEYED HEREIN, SHALL BE CONSIDERED INSTRUMENTS OF PROFESSIONAL SERVICE AND ARE PROPERTY OF GARVER, LLC. ANY USE, REPRODUCTION, OR DISTRIBUTION OF THIS DOCUMENT, ALONG WITH THE IDEAS AND DESIGN CONTAINED HEREIN, IS PROHIBITED UNLESS AUTHORIZED IN WRITING BY GARVER, LLC OR EXPLICITLY ALLOWED IN THE GOVERNING PROFESSIONAL SERVICES AGREEMENT FOR THIS WORK.

MARK T. DOLECHEK  
 LICENSED  
 25299  
 KANSAS  
 PROFESSIONAL ENGINEER  
 Digitally Signed 07/24/2020

| REV. | DATE | DESCRIPTION | BY |
|------|------|-------------|----|
|      |      |             |    |
|      |      |             |    |
|      |      |             |    |



CITY OF WICHITA  
 WICHITA, KANSAS  
 Sanitary Sewer from  
 Lift Station 47

Bubble Map SS  
 Pnts

JOB NO.: 19T41008  
 DATE: Jul 2020  
 DESIGNED BY: MTD  
 DRAWN BY: MCP

BAR IS ONE INCH ON ORIGINAL DRAWING  
 0 1"  
 IF NOT ONE INCH ON THIS SHEET, ADJUST SCALES ACCORDINGLY.

DRAWING NUMBER