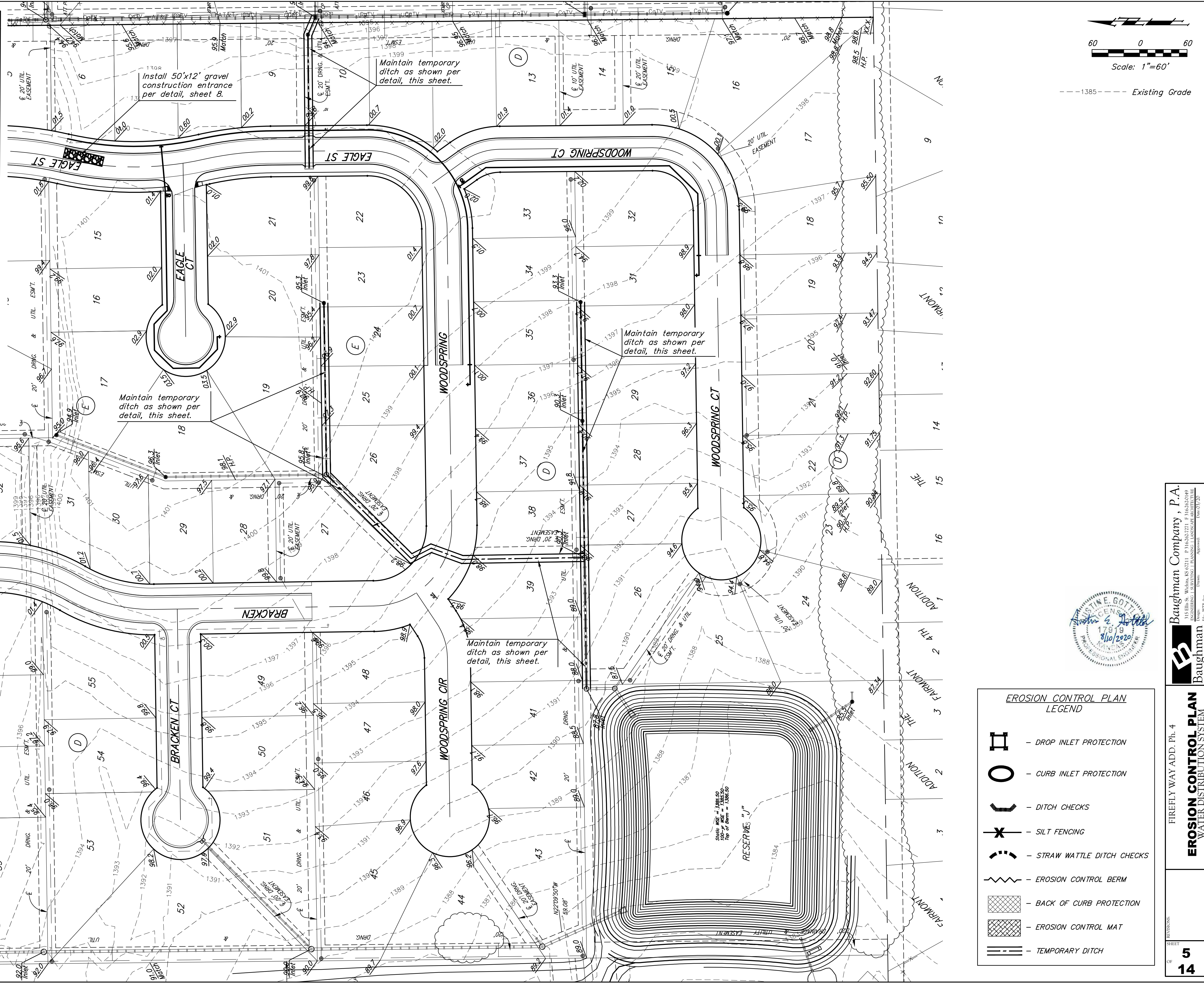
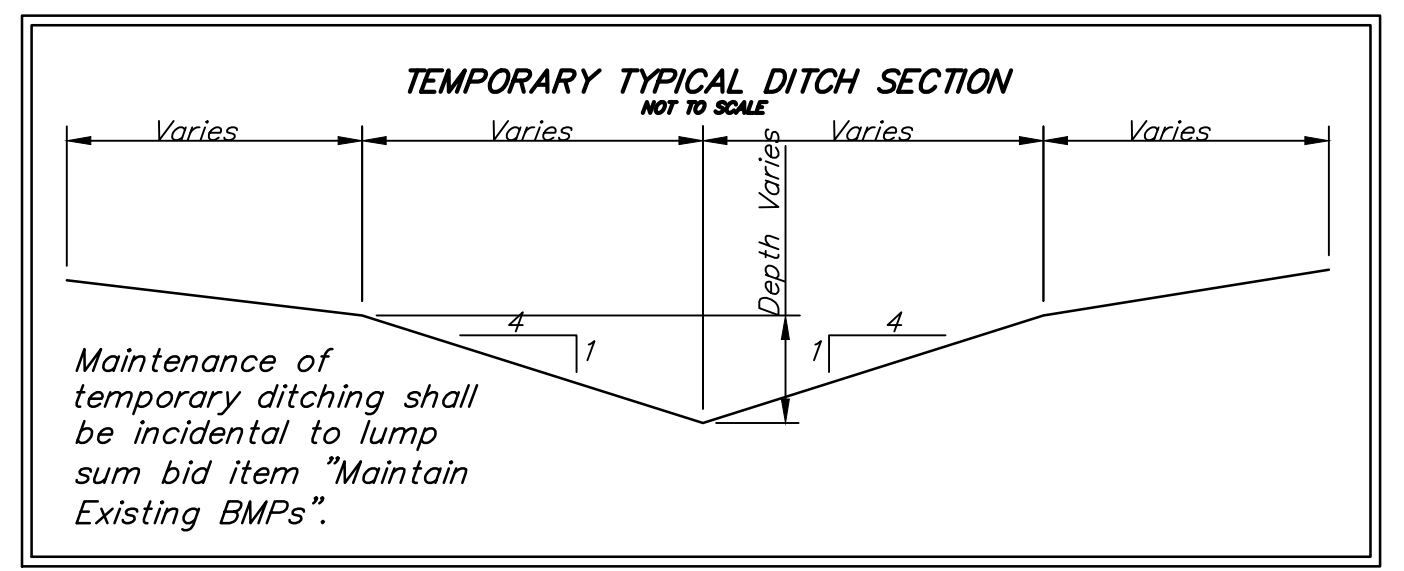


EROSION CONTROL MEASURE	INSTALL	MAINTAIN	REMOVE
BACK OF CURB PROTECTION (LF)	0	0	0
CONSTRUCTION ENTRANCE (EA)	1	0	0
CURB INLET BARRIER (EA)	0	0	0
DITCH CHECK (EA)	0	0	0
DROP INLET PROTECTION (EA)	0	0	0
EROSION CONTROL (LS)	0	0	0
EROSION CONTROL BERM (LF)	0	0	0
SILT FENCE (LF)	0	0	0
EROSION CONTROL MAT (SY)	0	0	0

QUANTITIES ARE FOR INFORMATION ONLY! CONTRACTOR SHALL VERIFY QUANTITIES PER FINAL BID QUANTITY SHEET.

* ALL EXISTING BMPs INCLUDING CONSTRUCTION ENTRANCE, SEDIMENT BARRIERS, SILT FENCE, EROSION CONTROL BERM, AND EROSION CONTROL MAT SHALL BE MAINTAINED AND REPAIRED IF NECESSARY. REPLACEMENT OR REMOVAL OF EROSION CONTROL MEASURES TO BE PAID FOR BY L.S. BID ITEM "MAINTAIN EXISTING EROSION CONTROL BMPs"



--- Existing Grade



EROSION CONTROL PLAN LEGEND

	- DROP INLET PROTECTION
	- CURB INLET PROTECTION
	- DITCH CHECKS
	- SILT FENCING
	- STRAW WATTLE DITCH CHECKS
	- EROSION CONTROL BERM
	- BACK OF CURB PROTECTION
	- EROSION CONTROL MAT
	- TEMPORARY DITCH

Baughman Company, P.A.
 1500 W. WILSON ST. SUITE 200, FAYETTEVILLE, NC 28404
 ENGINEERING | SURVEYING | PLANNING | LANDSCAPE ARCHITECTURE
 Justin E. Gottlieb, P.E.
 License No. 17919
 State of North Carolina
 8/10/2020
 APPROVED
 Justin E. Gottlieb, P.E.
 License No. 17919
 State of North Carolina
 8/10/2020

EROSION CONTROL PLAN
 WATER DISTRIBUTION SYSTEM

FIRELY WAY ADD. PH. 4

SHEET
5
 OF
14