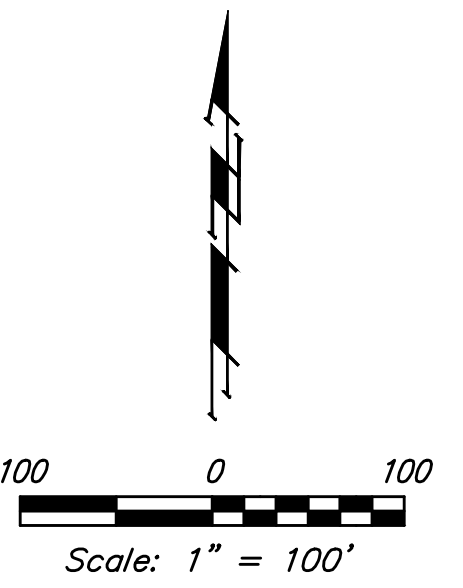


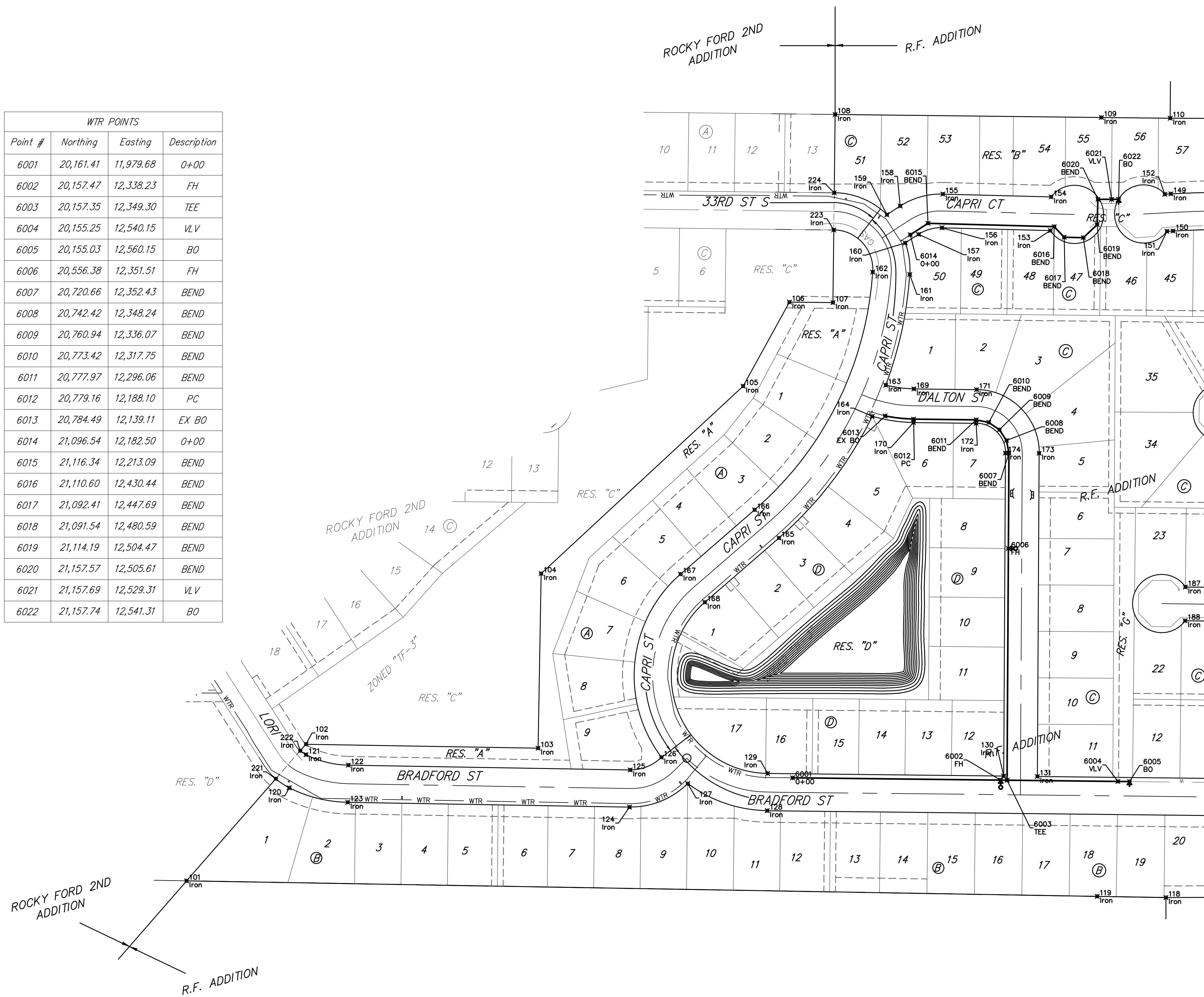
**BENCHMARKS:**

#1: "□" CUT CHISELED ON CURB,  
15.2' S. OF SW COR., LOT 6,  
BLOCK A, ROCKY FORD 2ND  
ADDITION.  
ELEV. = 1385.10 NAVD88

#2: "□" CUT CHISELED ON CURB,  
8.6' N. & 11.7' W. OF SW COR.,  
LOT 14, BLOCK C, ROCKY FORD  
2ND ADDITION.  
ELEV. = 1380.11 NAVD88



WTR POINTS			
Point #	Northing	Easting	Description
6001	20,161.41	11,979.68	0+00
6002	20,157.47	12,338.23	FH
6003	20,157.35	12,349.30	TEE
6004	20,155.25	12,540.15	VLV
6005	20,155.03	12,560.15	BO
6006	20,556.38	12,351.51	FH
6007	20,720.66	12,352.43	BEND
6008	20,742.42	12,348.24	BEND
6009	20,760.94	12,336.07	BEND
6010	20,773.42	12,317.75	BEND
6011	20,777.97	12,296.06	BEND
6012	20,779.16	12,188.10	PC
6013	20,784.49	12,139.11	EX BO
6014	21,096.54	12,182.50	0+00
6015	21,116.34	12,213.09	BEND
6016	21,110.60	12,430.44	BEND
6017	21,092.41	12,447.69	BEND
6018	21,091.54	12,480.59	BEND
6019	21,114.19	12,504.47	BEND
6020	21,157.57	12,505.61	BEND
6021	21,157.69	12,529.31	VLV
6022	21,157.74	12,541.31	BO



	R.F. Addition - Phase II	
	<b>COORDINATES</b>	
Water Distribution System		
<small>Baughman Company, P.A. 313 Ellis St. Wichita, KS 67211 P 316-262-7271 F 316-262-0149 ENGINEERING   SURVEYING   PLANNING   LANDSCAPE ARCHITECTURE</small>		
PROJECT NUMBER <b>448-2019-005514</b>	DESIGN AEG	DRAWN HWJ
REVISIONS:	APPROVED	DATE 08/03/20
SCALE Noted		SHEET <b>14 OF 16</b>