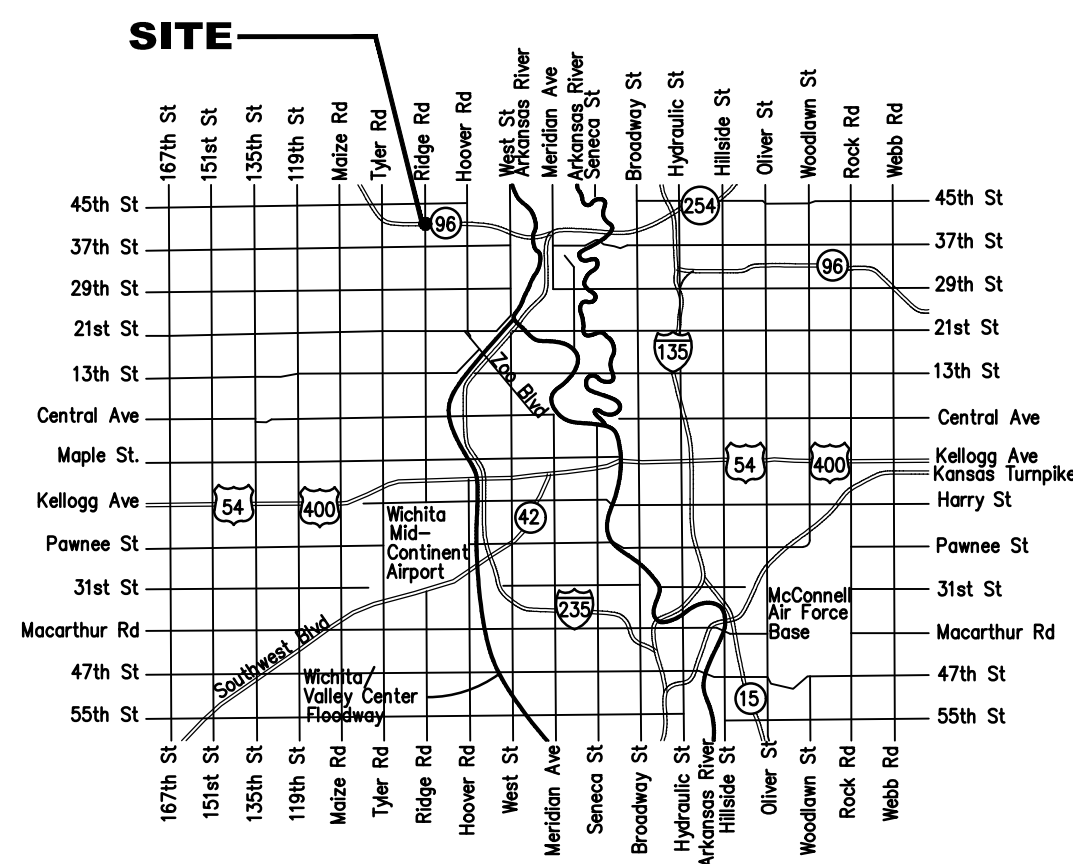


Sanitary Sewer Main Improvements to serve **VILLAGE CHARTERS 3RD ADDITION**

Lift Station Address: 4204 N. Ridge Road

CITY OF WICHITA, KANSAS

Gary Janzen, P.E. City Engineer



VICINITY MAP

SHEET INDEX

1	Title Sheet
2	General Notepage
3-5	SS Line 1 & 2 Plan/Profile
6-9	Forcemain Plan/Profile
10	Pump Station Details
11	Pump Station Site Details
12-13	Pump Control Details
14-15	Pump Station Misc. Details
16-17	Standard Sewer Details
18-19	Concrete Drive Plan/Profile
20	Concrete Drive Joint Plan
21-22	Paving Details
23	Erosion Control Plan
24-28	Erosion Control Details

Project Number
468-2019-005421

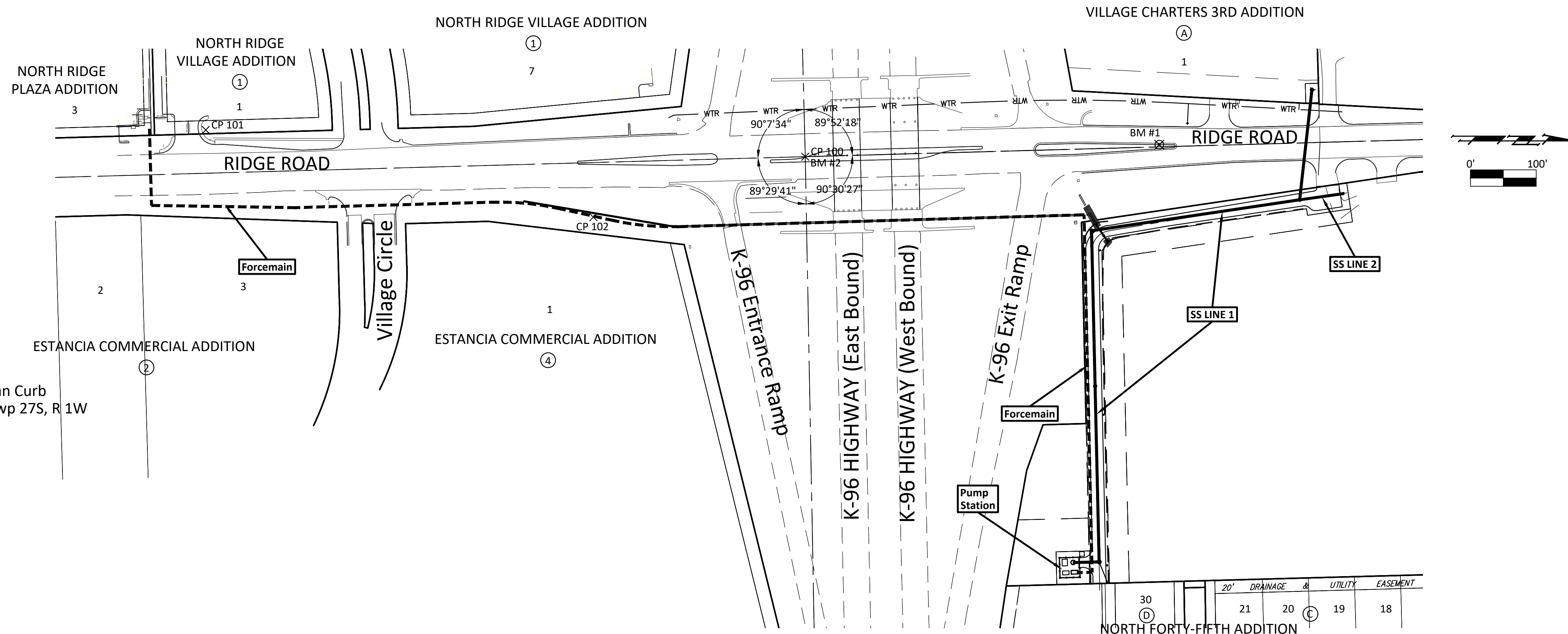
OCA Number
629310

June 2020

BENCHMARKS

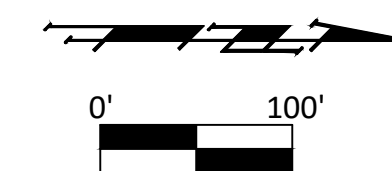
BM #1 - Chiseled "X" on Top of the Curb on the West Side of the Median on Ridge Road North of the Entrance/Exit Ramps on K-96.
Elev. = 1336.16 (NAVD 88)

BM #2 - Chiseled "+" in the Flowline of the Curb on the West Side of the Median on Ridge Road South of the K-96 Bridge.
Elev. = 1335.04 (NAVD 88)



CONTROL POINTS

- CP 100 - Chiseled "+" in Flowline of Median Curb
West Quarter Corner, Sec. 27, Twp 27S, R 1W
B.L. Sta. 50+00.00
N-1712008.957
E-1622686.711
- CP 101 - #4 Rebar with Yellow Cap
B.L. Sta. 40+90.47, 65.85' Lt.
N-1711097.954
E-1622646.055
- CP 102 - #4 Rebar with Yellow Cap
B.L. Sta. 46+75.56, 83.01' Rt.
N-1711686.935
E-1622778.671



BAUGHMAN 315 ELLIS | WICHITA, KS 67211
[P] 316-262-7271
[BaughmanCo.com]