

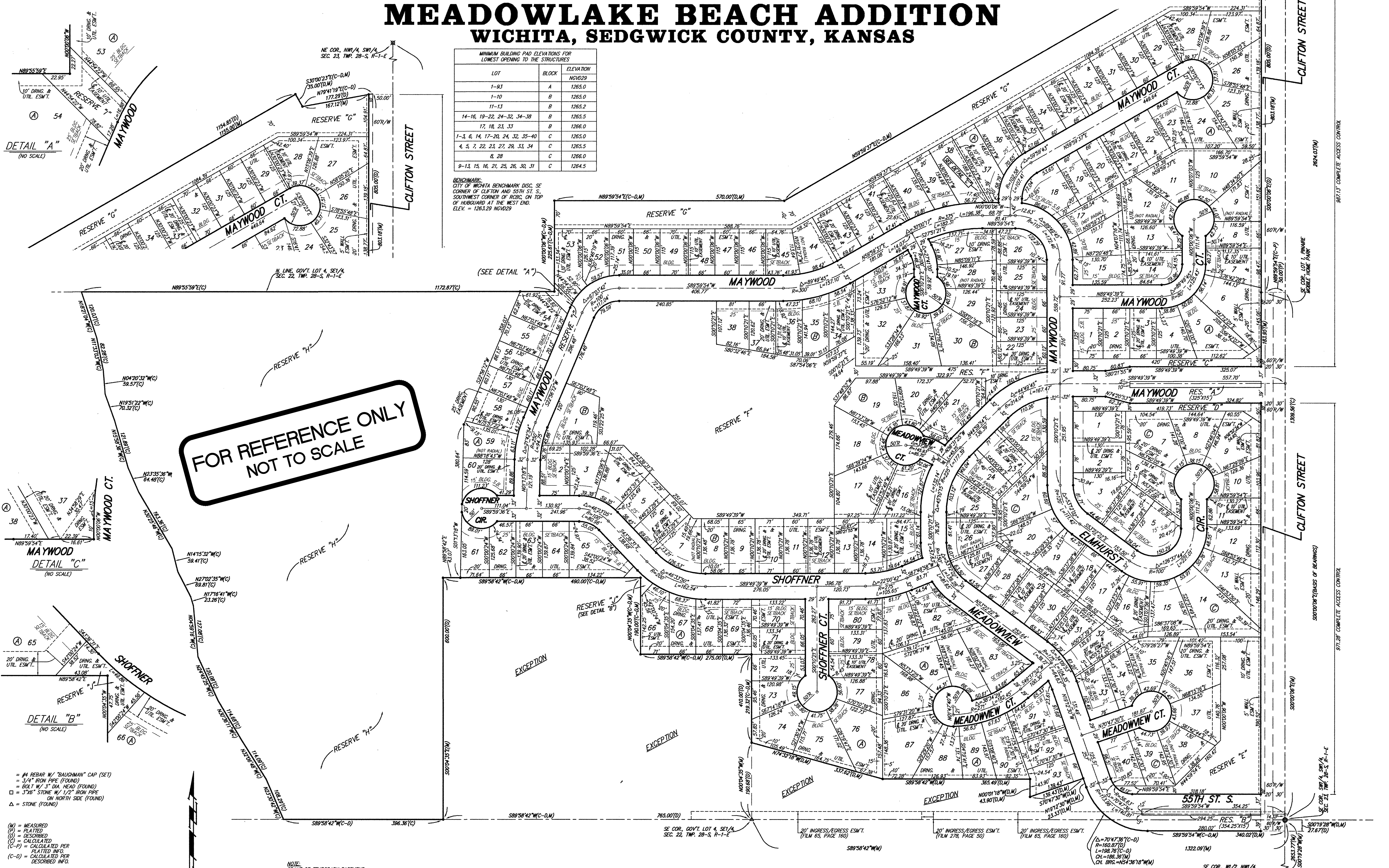
MEADOWLAKE BEACH ADDITION WICHITA, SEDGWICK COUNTY, KANSAS

MINIMUM BUILDING PAD ELEVATIONS FOR LOWEST OPENING TO THE STRUCTURES

LOT	BLOCK	ELEVATION
1-83	A	1265.0
1-10	B	1265.0
11-13	B	1265.2
14-16, 19-22, 24-32, 34-38	B	1265.5
17, 18, 23, 33	B	1266.0
1-3, 6, 14, 17-20, 24, 32, 35-40	C	1265.0
4, 5, 7, 22, 23, 27, 28, 33, 34	C	1265.5
8, 28	C	1266.0
9-13, 15, 16, 21, 25, 26, 30, 31	C	1264.5

BENCHMARK:
CITY OF WICHITA BENCHMARK DISC. SE CORNER OF CLIFTON AND 55TH ST. SOUTHWEST CORNER OF RCBC, ON TOP OF HUBBUARD AT THE WEST END. ELEV. = 1263.29 NGVD29

**FOR REFERENCE ONLY
NOT TO SCALE**

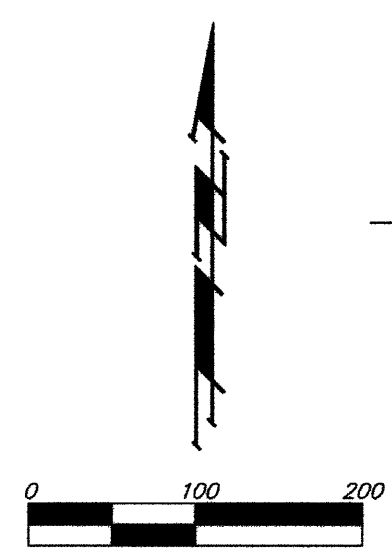


DETAIL "A"
(NO SCALE)

DETAIL "C"
(NO SCALE)

DETAIL "B"
(NO SCALE)

- #4 REBAR W/ "BAUGHMAN" CAP (SET)
 - 3/4" IRON PIPE (FOUND)
 - BOLT W/ 3" DIA. HEAD (FOUND)
 - 3"6" STONE W/ 1/2" IRON PIPE (ON NORTH SIDE) (FOUND)
 - STONE (FOUND)
- (M) = MEASURED
(P) = PLATTED
(D) = DESCRIBED
(C) = CALCULATED
(C-D) = CALCULATED PER PLATTED INFO.
(C-D) = CALCULATED PER DESCRIBED INFO.



NOTE:
GRANT OF TEMPORARY EASEMENT, (UNDEFINED WIDTH, MODIFIABLE, AND NON-EXCLUSIVE), FOR EXISTING ACCESS AND EXISTING UTILITIES. (DOC.#/FLM-PG: 28770778)

Baughman Company, P.A.
315 55th St. Wichita, KS 67211 P 316.262.7371 F 316.262.0149
ENGINEERING | SURVEYING | PLANNING | LANDSCAPE ARCHITECTURE