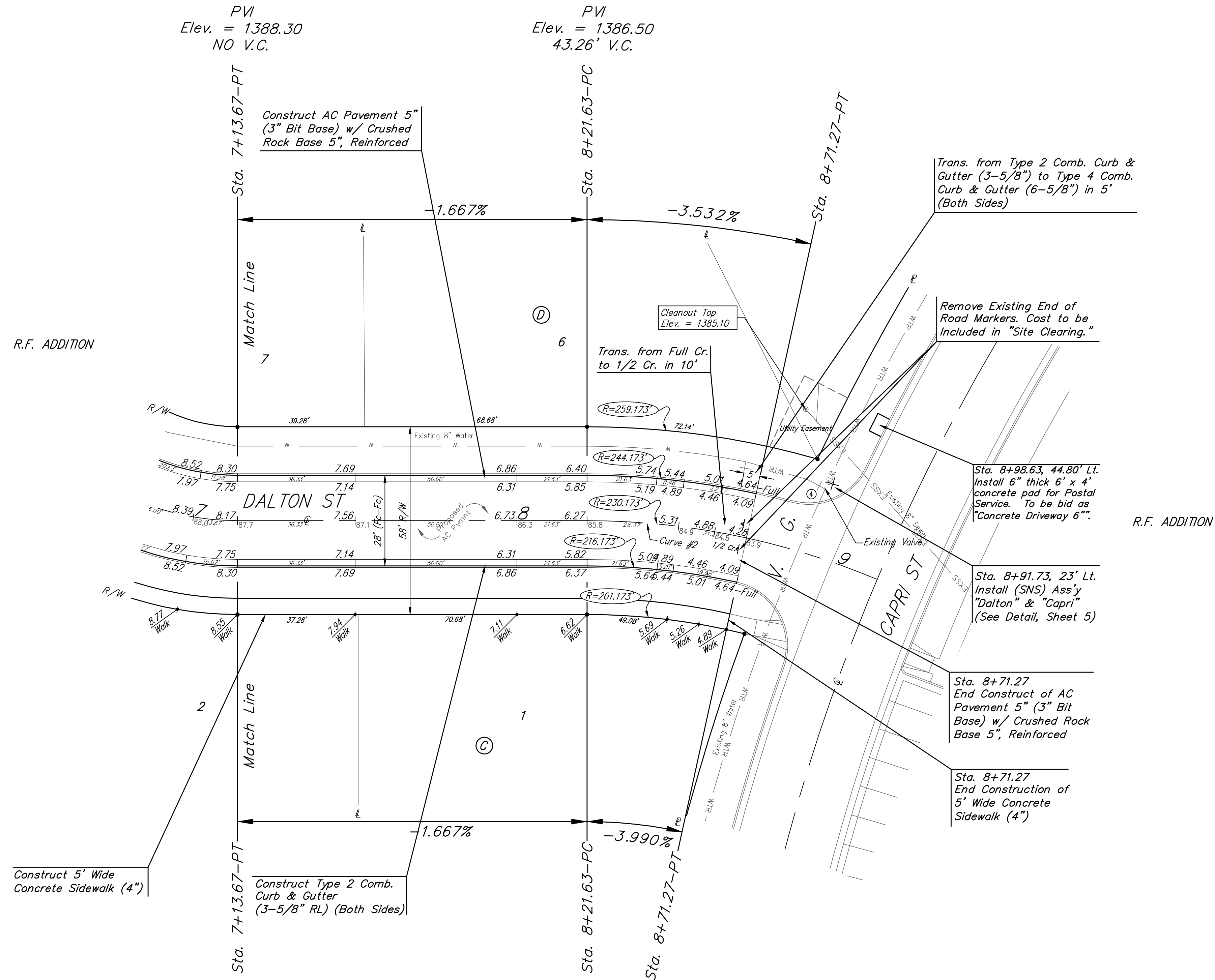
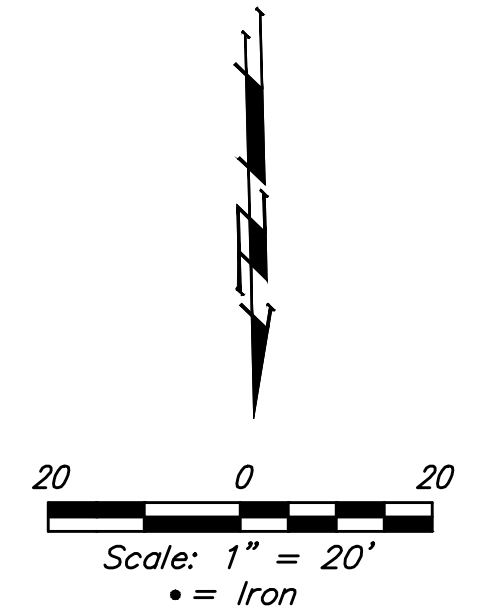


BENCHMARKS:
 #1: "□" CUT CHISELED ON CURB,
 15.2' S. OF SW COR., LOT 6,
 BLOCK A, ROCKY FORD 2ND
 ADDITION.
 ELEV. = 1385.10 NAVD88

#2: "□" CUT CHISELED ON CURB,
 8.6' N. & 11.7' W. OF SW COR.,
 LOT 14, BLOCK C, ROCKY FORD
 2ND ADDITION.
 ELEV. = 1380.11 NAVD88



Curve #2
 Curve Data Based on Centerline

Rad. = 230.173' Delta = 12°21'24" Tangent = 24.92'
 Arc = 49.64' L.C. = 49.54' Def./Ft. = 7.46777 Min.

Station	Arc	Face Chord Lengths		Defl.	Total Defl.
		8' Left	8' Right		
8+21.63	-	-	-	0'00'00"	0'00'00"
8+25.00	3.37'	3.69'	3.05'	0'25'10"	0'25'10"
8+50.00	25.00'	27.38'	22.60'	3'06'42"	3'31'52"
8+71.27	21.27'	23.29'	19.23'	2'38'50"	6'10'42"

Roll type curb & gutter to be constructed on the pavement on this sheet.
 Top of curb elevation are given for full height curb.

		R.F. Addition - Phase II	
		DALTON	
Sta. 7+13.67 to Sta. 8+71.27			
<small>Baughman Company, P.A. 315 Ellis St. Wichita, KS 67211 P 316-262-7271 F 316-262-0149 ENGINEERING SURVEYING PLANNING LANDSCAPE ARCHITECTURE</small>			
PROJECT NUMBER 472-2019-085534	DESIGN AEG	DRAWN HJW	DATE 08/17/20
REVISIONS:			
		SCALE Noted	SHEET 11 OF 36