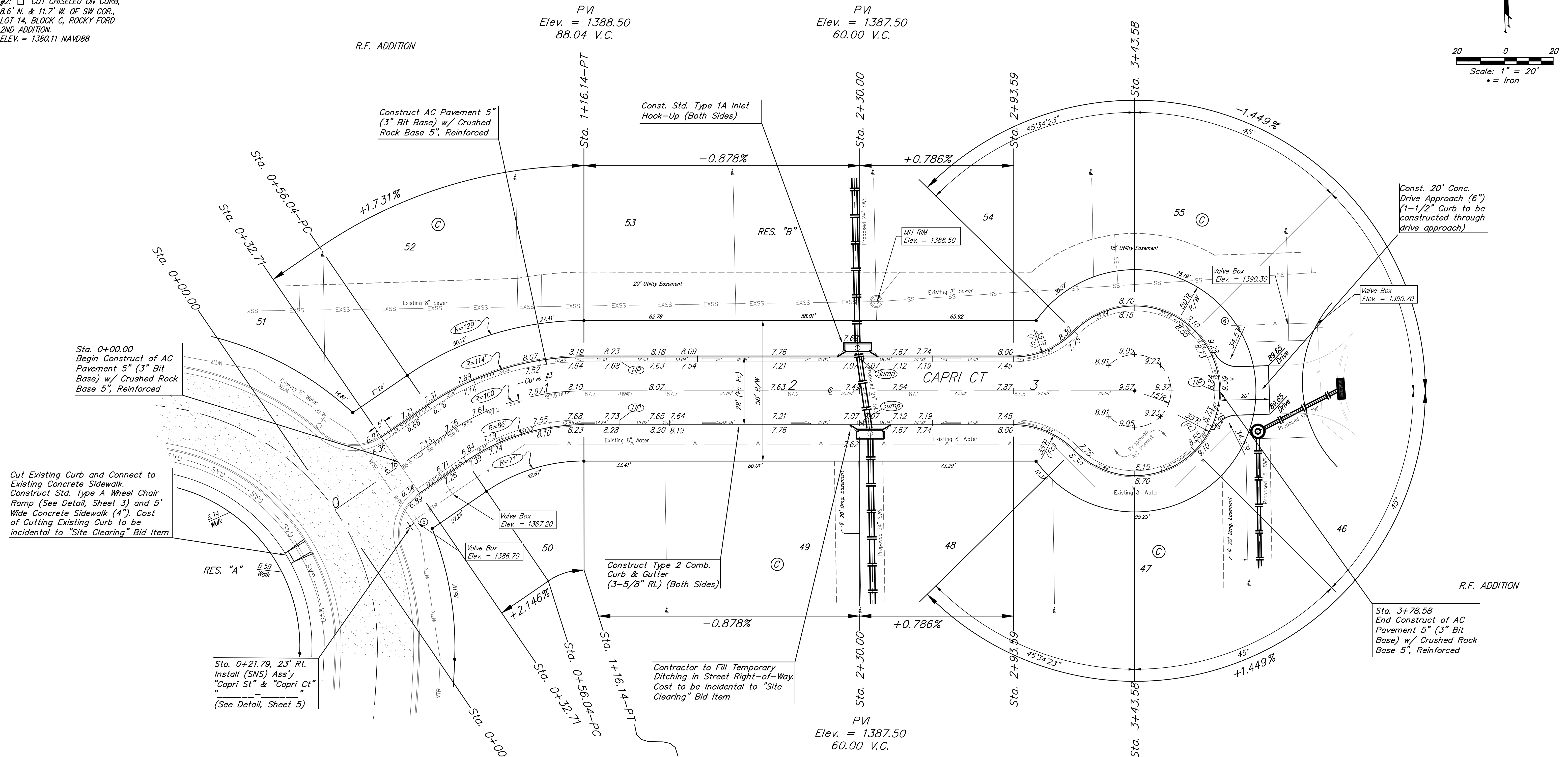
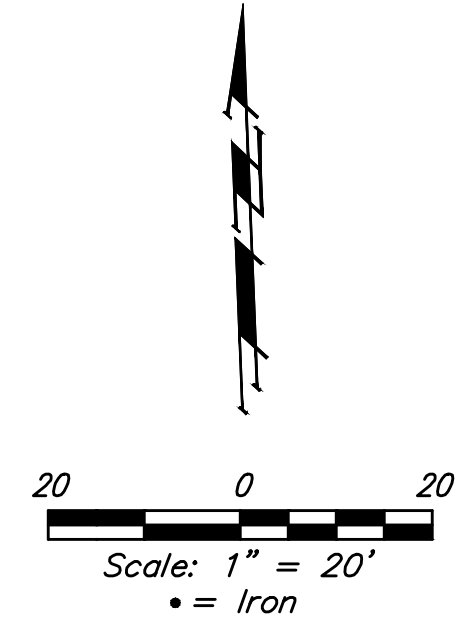


BENCHMARKS:
 #1: "□" CUT CHISELED ON CURB,
 15.2' S. OF SW COR., LOT 6,
 BLOCK A, ROCKY FORD 2ND
 ADDITION.
 ELEV. = 1385.10 NAVD88

#2: "□" CUT CHISELED ON CURB,
 8.6' N. & 11.7' W. OF SW COR.,
 LOT 14, BLOCK C, ROCKY FORD
 2ND ADDITION.
 ELEV. = 1380.11 NAVD88



Cut Existing Curb and Connect to Existing Concrete Sidewalk. Construct Std. Type A Wheel Chair Ramp (See Detail, Sheet 3) and 5' Wide Concrete Sidewalk (4"). Cost of Cutting Existing Curb to be incidental to "Site Clearing" Bid Item

Sta. 0+21.79, 23' Rt. Install (SNS) Ass'y "Capri St" & "Capri Ct" (See Detail, Sheet 5)

Contractor to Fill Temporary Ditching in Street Right-of-Way. Cost to be Incidental to "Site Clearing" Bid Item

Sta. 3+78.58 End Construct of AC Pavement 5" (3" Bit Base) w/ Crushed Rock Base 5", Reinforced

Curve #3
 Curve Data Based on Centerline
 Rad. = 100' Delta = 34°26'04" Tangent = 30.99'
 Arc = 83.43' L.C. = 59.20' Def./Ft. = 12.38204 Min.

Station	Arc	Face Chord Lengths		Defl.	Total Defl.
		8' Left	8' Right		
0+32.71	-	-	-	0'00"00"	0'00"00"
0+50.00	17.29'	15.19'	9.71'	3'34"05"	3'34"05"
0+75.00	25.00'	21.94'	14.03'	5'09"33"	8'43"38"
1+00.00	25.00'	21.94'	14.03'	5'09"33"	13'53"11"
1+16.14	16.14'	14.18'	9.06'	3'19"51"	17'13"02"

NOTE:
 Final Plans submitted prior to receiving As-Built elevations for Mass Grading. Capri Ct. existing elevations may be higher than indicated.

Roll type curb & gutter to be constructed on the pavement on this sheet. Top of curb elevation are given for full height curb.

	R.F. Addition - Phase II
	CAPRI CT
Sta. 0+32.71 to Sta. 3+78.58	
<small>Baughman Company, P.A. 315 Ellis St. Wichita, KS 67211 P 316-262-7271 F 316-262-0149 ENGINEERING SURVEYING PLANNING LANDSCAPE ARCHITECTURE</small>	
PROJECT NUMBER 472-2019-085534	DESIGN AEG
REVISIONS:	DRAWN HW
	APPROVED DATE 08/17/20
	SCALE Noted
	SHEET 12 OF 36