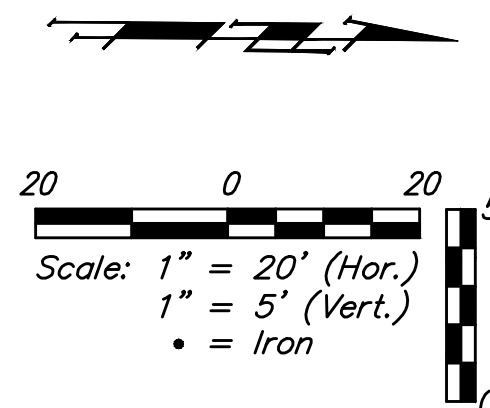
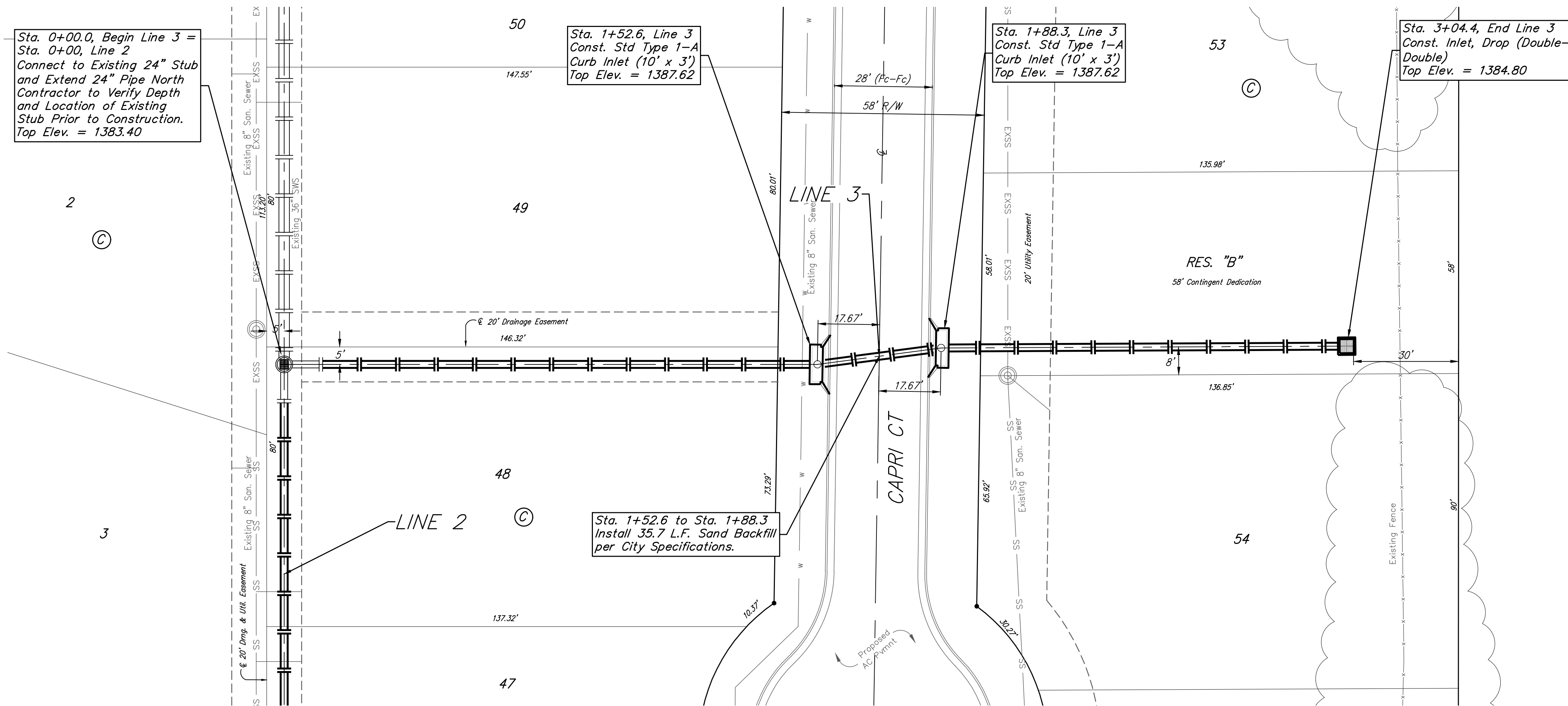


BENCHMARKS:

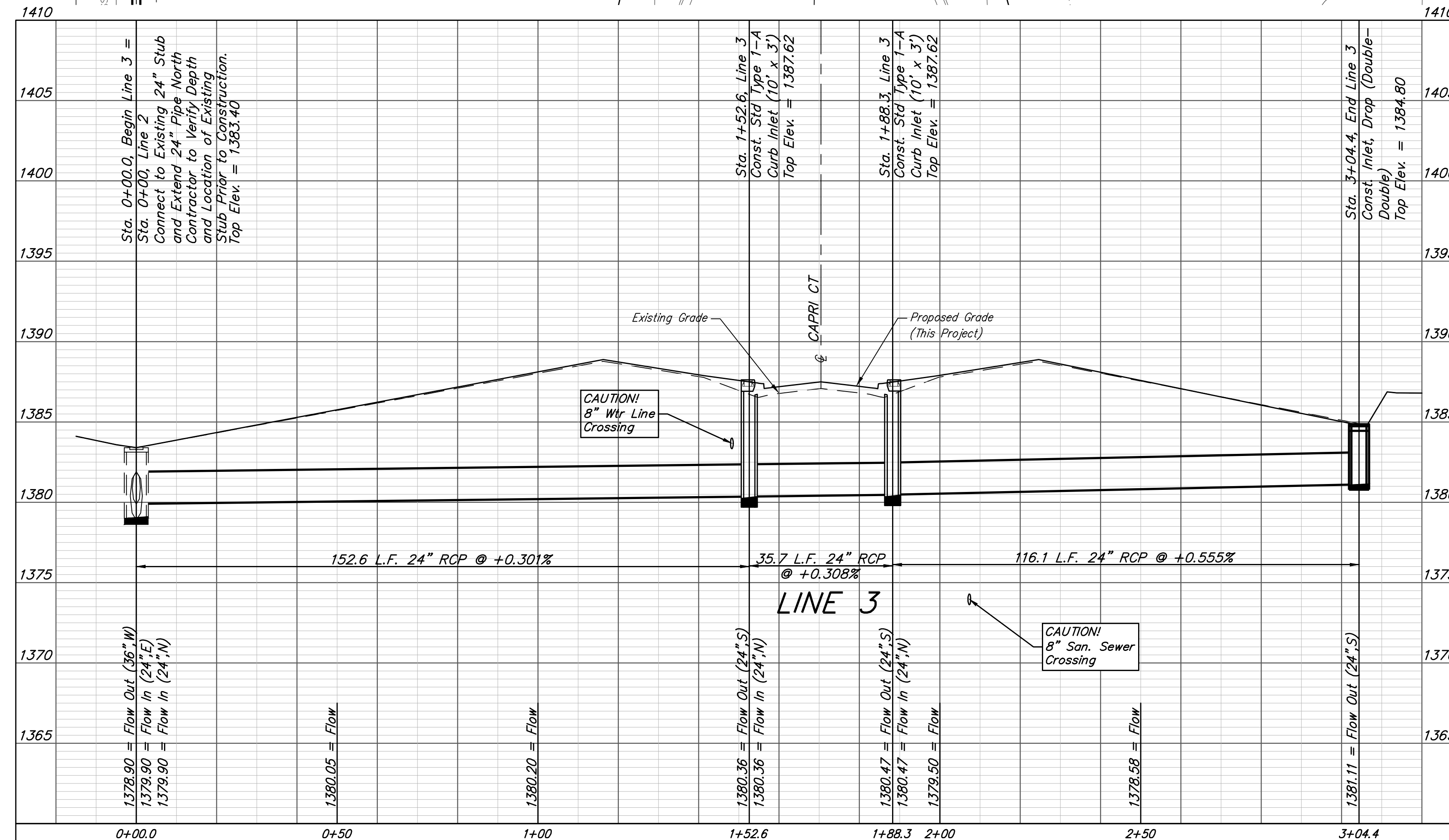
#1: " " CUT CHISELED ON CURB,
15.2' S. OF SW COR., LOT 6,
BLOCK A, ROCKY FORD 2ND
ADDITION.
ELEV. = 1385.10 NAVD88

#2: " " CUT CHISELED ON CURB,
8.6' N. & 11.7' W. OF SW COR.,
LOT 14, BLOCK C, ROCKY FORD
2ND ADDITION.
ELEV. = 1380.11 NAVD88

R.F. ADDITION



R.F. ADDITION



Existing trees which are in direct conflict with proposed new construction shall be removed by the Contractor ONLY with approval of the Engineer. Trees not in direct conflict with proposed new construction shall remain and be protected from damage. Cost shall be included in bid item "Site Clearing"

Baughman		R.F. Addition - Phase II	
		LINE 3	
		Storm Water Sewer Improvements	
Baughman Company, P.A. 315 Ellis St. Wichita, KS 67211 P 316-262-7271 F 316-262-0149 ENGINEERING SURVEYING PLANNING LANDSCAPE ARCHITECTURE			
PROJECT NUMBER 472-2019-085534	DESIGN AEG	DRAWN HJW	DATE
REVISIONS:	APPROVED	DATE	08/17/2020
	SCALE Noted	SHEET	
		15 OF 36	