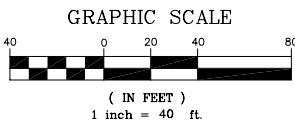
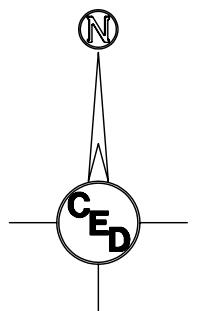


NORTHEAST FOOTBALL FIELDS REALIGNMENT ELECTRICAL LAYOUT PLAN



- LEGEND**
- G = GAS MAIN
 - W = WATER MAIN
 - SS = SANITARY SEWER
 - SWS = STORM WATER SEWER
 - UGE = UNDER GROUND ELECTRIC
 - UGT = UNDER GROUND TELEPHONE
 - FOT = BURRIED FIBER OPTIC TELEPHONE

- ⊙ B.M. BENCH MARK
- E.B. ELECTRIC BOX
- ← GUY ANCHOR
- G.R. GROUND ROD
- HIGH LINE POLE
- L.P. LIGHT POLE
- POST
- POWER POLE
- d SIGN
- SAV = 1/2" REBAR W/SAVOY CAP (SET)

Bench Mark: Square Cut on S. Curb Return E. Side Jewett Street @ Drive Entrance to Parking Lot on S. Side of Fees Street.
 Elevation = 1328.29 NGVD

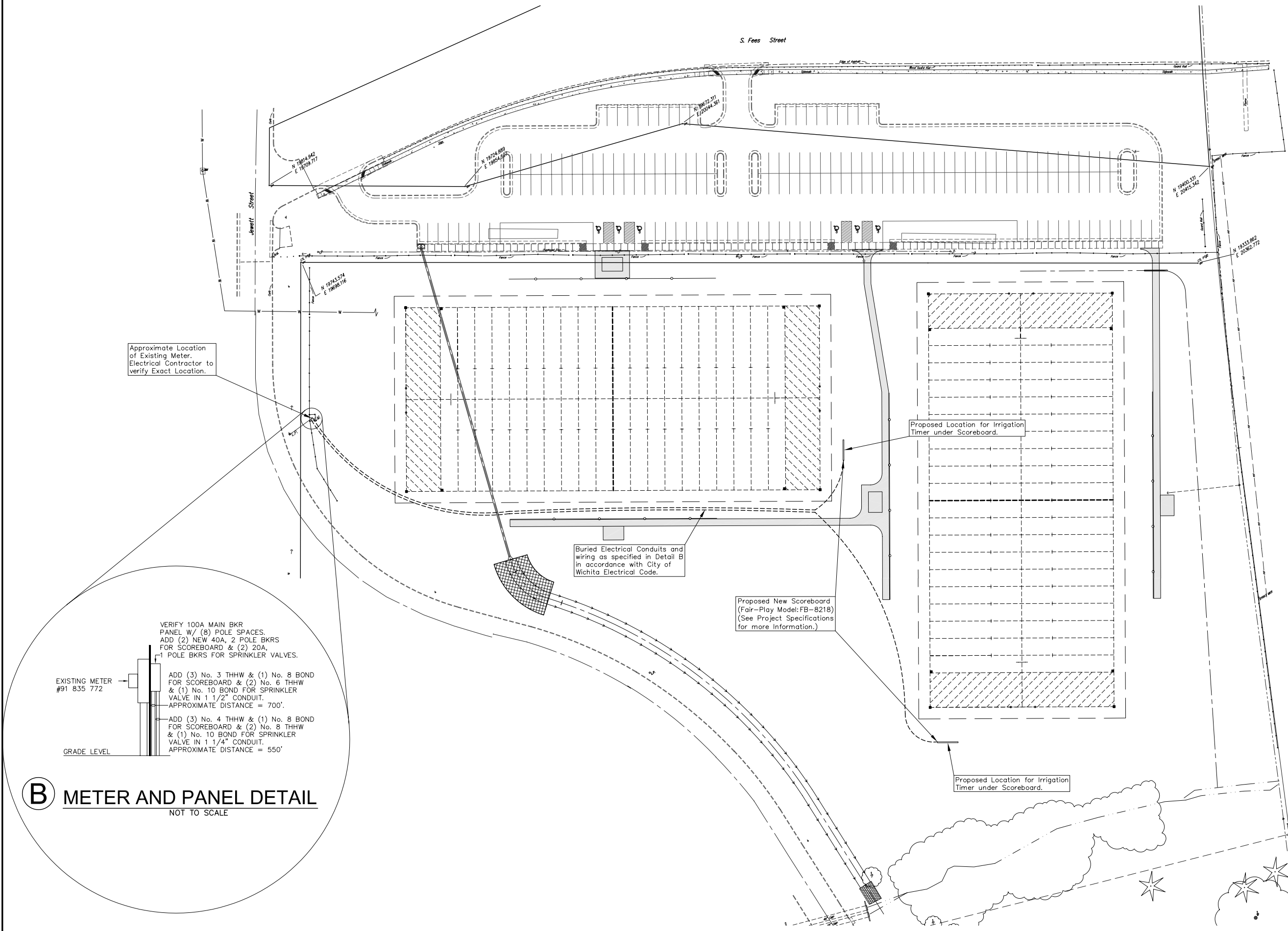
Bench Mark #2: Square Cut on top of W. Curb line of Jewett Street across from Drive Entrance to Parking Lot on S. Side of Fees Street.
 Elevation = 1328.35 NGVD

CTL PT#1
 N 19743.574
 E 19698.116

CTL PT#2
 N 19333.862
 E 20362.772

—Proposed Concrete Pavement
 (Driveway, Sidewalk and Curb & Gutter)

UTILITIES SHOWN REPRESENT THE BEST INFORMATION AVAILABLE FOR DESIGN. ADDITIONAL UTILITIES MAY BE PRESENT ON THIS PROJECT. THE CONTRACTOR SHALL BE RESPONSIBLE FOR DETERMINING THE EXACT LOCATION, DEPTH AND SIZE OF ALL UNDERGROUND UTILITIES PRIOR TO CONSTRUCTION. THE CONTRACTOR SHALL BE LIABLE FOR ANY DAMAGE CAUSED BY THE FAILURE TO DO SO.



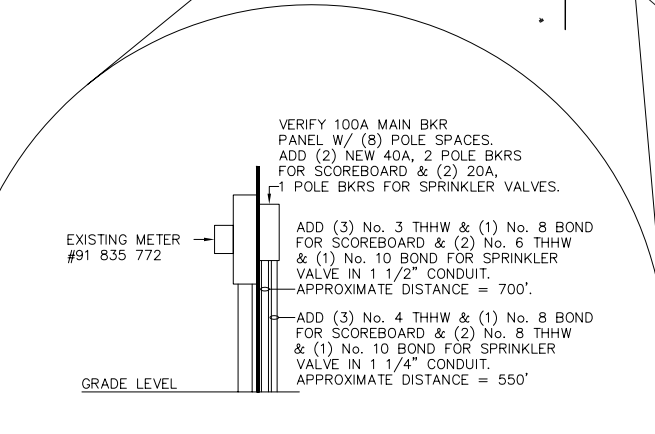
Approximate Location of Existing Meter. Electrical Contractor to verify Exact Location.

Buried Electrical Conduits and wiring as specified in Detail B in accordance with City of Wichita Electrical Code.

Proposed New Scoreboard (Fair-Play Model:FB-8218) (See Project Specifications for more information.)

Proposed Location for Irrigation Timer under Scoreboard.

Proposed Location for Irrigation Timer under Scoreboard.



B METER AND PANEL DETAIL
 NOT TO SCALE

VERIFY 100A MAIN BKR PANEL W/ (8) POLE SPACES. ADD (2) NEW 40A, 2 POLE BKRS FOR SCOREBOARD & (2) 20A, 1 POLE BKRS FOR SPRINKLER VALVES.

ADD (3) No. 3 THHW & (1) No. 8 BOND FOR SCOREBOARD & (2) No. 6 THHW & (1) No. 10 BOND FOR SPRINKLER VALVE IN 1 1/2" CONDUIT. APPROXIMATE DISTANCE = 700'.

ADD (3) No. 4 THHW & (1) No. 8 BOND FOR SCOREBOARD & (2) No. 8 THHW & (1) No. 10 BOND FOR SPRINKLER VALVE IN 1 1/4" CONDUIT. APPROXIMATE DISTANCE = 550'

EXISTING METER #91 835 772

GRADE LEVEL

NORTHEAST FOOTBALL FIELDS
ELECTRICAL LAYOUT PLAN
 PLANEVIEW PARK, WICHITA, KANSAS
 CED PROJ. NO.: 20051351
CERTIFIED ENGINEERING DESIGN, P.A.
 810 WEST DOUGLAS, SUITE C
 WICHITA, KANSAS 67203
 PH.(316)262-8808 FAX.(316)262-1669

DESIGNED: HDF	SCALE: 1"=40'	SHEET
DRAWN: CKW	DATE: 6/06	19
CHECKED: HDF	CED FILE: Planeview-Suppl	TOTAL 26