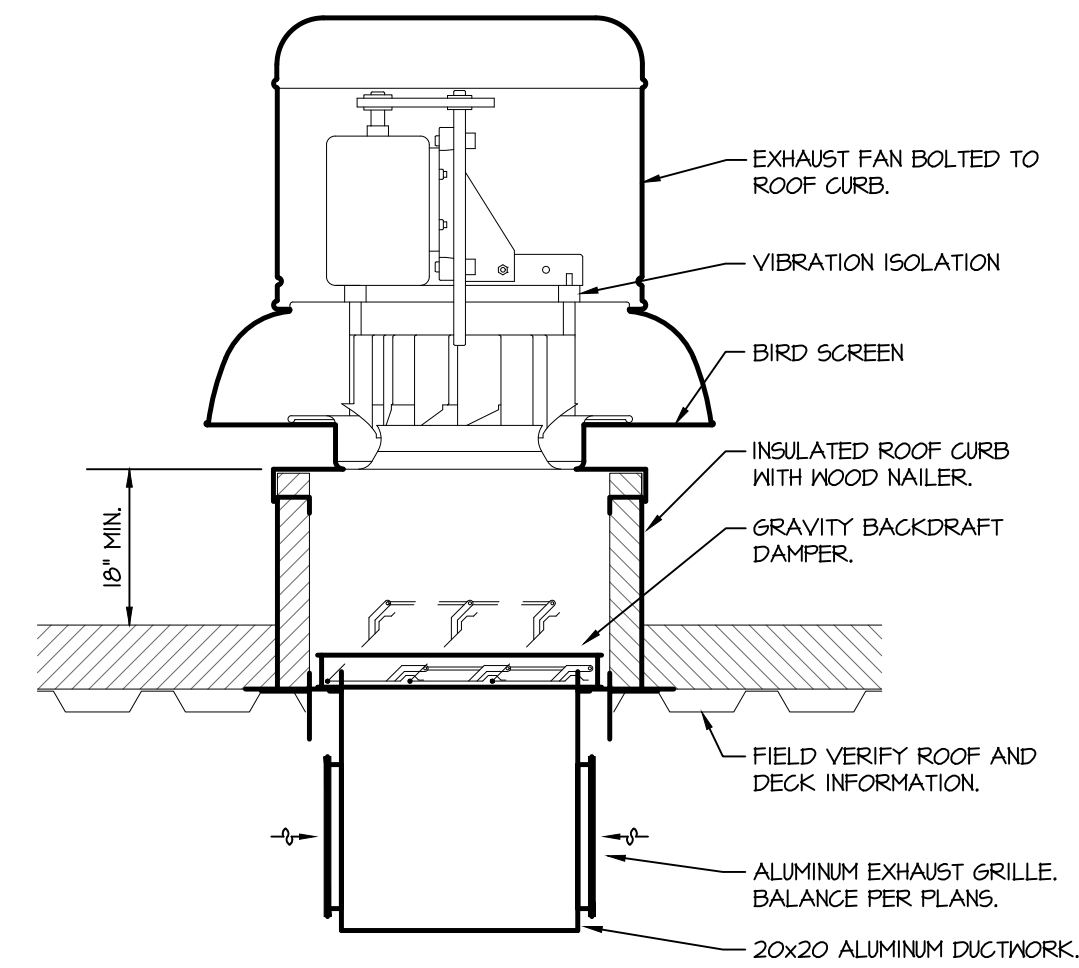
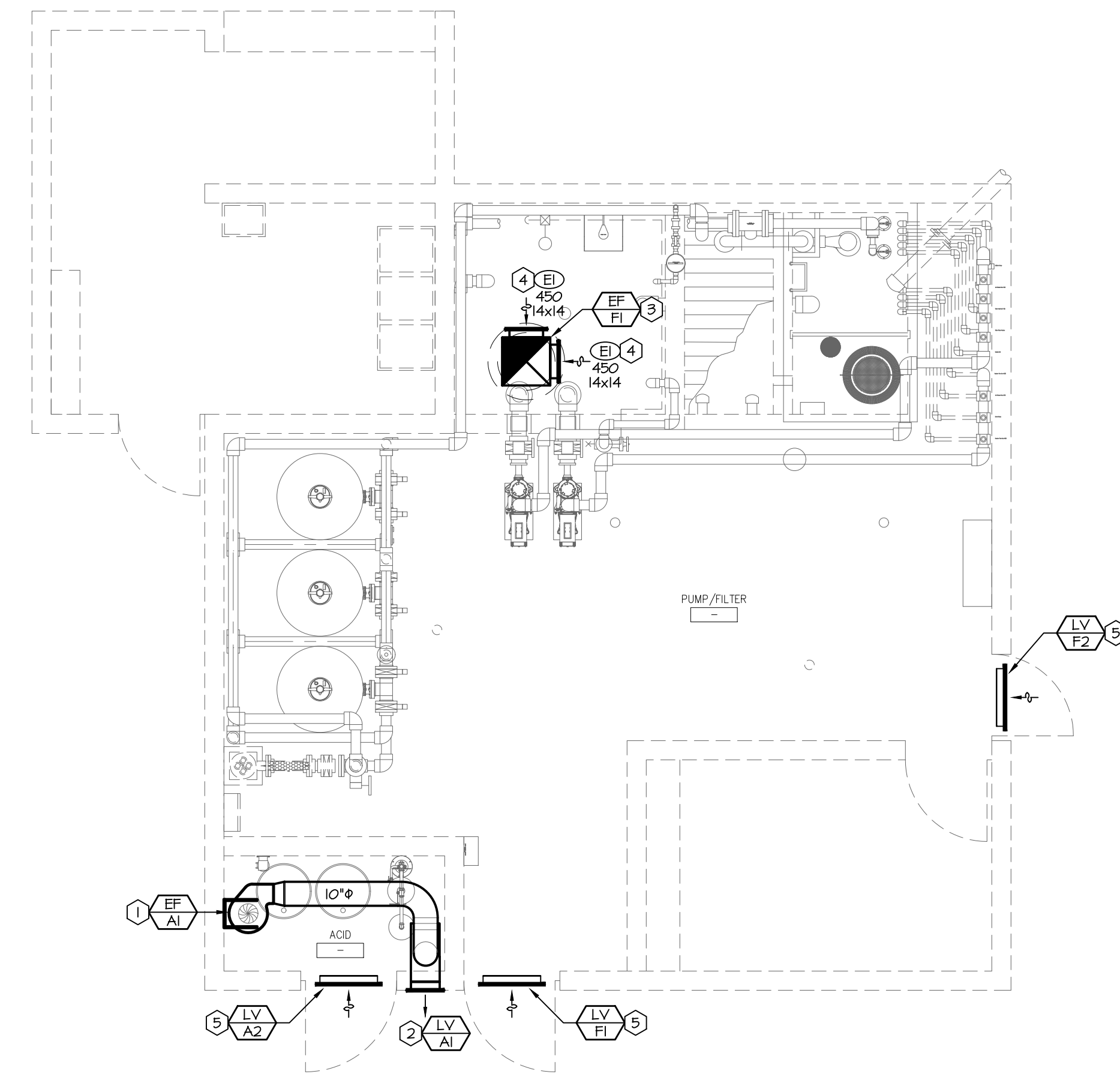


3 Chemical Exhaust Fan Detail
Scale: Not to Scale



- NOTES:**
1. DUCT SIZES SHALL BE AS INDICATED ON THE PLANS.
 2. PROVIDE ROOF CURB OF SUFFICIENT HEIGHT TO PROVIDE A MINIMUM 18" CLEARANCE FROM THE TOP OF THE CURB TO THE FINISHED ROOF.
 3. BOTTOM OF ROOF CURB SHALL MATCH THE SLOPE OF THE ROOF SO THAT THE TOP OF ROOF CURB IS LEVEL. ATTACH FAN TO CURB PER MANUFACTURER'S RECOMMENDATIONS.
 4. PROVIDE ROOFING AND FLASHING PER ARCHITECTURAL AND ROOF MANUFACTURER'S REQUIREMENTS.
 5. CURB INSTALLATION SHALL NOT VOID ROOF WARRANTY. COORDINATE ROOF WARRANTY WITH OWNER.

2 Roof Exhaust Fan Detail
Scale: Not to Scale



1 Mechanical Plan
Scale: 1/4" = 1'-0"

EXHAUST FAN SCHEDULE

MARK	MANUFACTURER	MODEL	CFM	S.P.	DRIVE	RPM	WATTS	HP	V/PH	NOTES
EF-AI	FANAM	CBI-200	400	1	DIRECT	1125	-	1/4	120/1	13
EF-FI	LOREN COOK	135C150	1,300	0.75	DIRECT	1550	140	1/2	120/1	23

- NOTES:**
1. FAN HOUSING AND WHEEL SHALL BE CONSTRUCTED OF POLYPROPYLENE.
 2. PROVIDE FAN WITH MANUFACTURER'S FAN SPEED CONTROLLER.
 3. PROVIDE FAN WITH MANUFACTURER'S DISCONNECT SWITCH.

LOUVER SCHEDULE

MARK	MANUFACTURER	MODEL	SERVICE	SIZE W x H (IN.)	AIRFLOW CFM	MIN. FREE AREA (S.F.)	MAX. PD INCHES WC	NOTES
LV-A1	ACTIVAR	1400 SERIES	INTAKE	24x24	100	1.4	0.02	12
LV-A2	RISKIN	SF640	EXHAUST	16x16	400	0.51	0.08	3
LV-F1	ACTIVAR	1400 SERIES	INTAKE	24x24	100	1.4	0.02	1
LV-F2	ACTIVAR	1400 SERIES	INTAKE	24x24	100	1.4	0.02	1

- PLAN NOTES:**
1. PROVIDE FIBERGLASS INSECT SCREEN.
 2. PROVIDE BACK OF LOUVER WITH BAKED ENAMEL FINISH.
 3. PROVIDE FIBERGLASS LOUVER WITH FIBERGLASS INSECT SCREEN.

- GENERAL NOTES:**
- A. PROVIDE MOUNTING FRAME TO MATCH CONSTRUCTION.
 - B. LOUVER SHALL BE PAINTED IN FIELD PER ARCHITECT'S DIRECTION.
 - C. PROVIDE ALL FASTENERS, HANGERS, AND ASSOCIATED DEVICES REQUIRED FOR COMPLETE INSTALLATION.

GRILLE, REGISTER, & DIFFUSER SCHEDULE

MARK	MANUFACTURER	MODEL	SERVICE	FACE SIZE	NECK SIZE	DAMPER	NOTES
EI	TITUS	EF	EXHAUST	AS NOTED	AS NOTED	YES	1

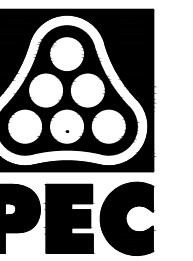
- NOTES:**
1. GRILLE AND ALL FASTENERS SHALL BE ALUMINUM.
- GENERAL NOTES (APPLY TO ALL ABOVE):**
- A. MAXIMUM NO. OF 30 FOR ALL GRILLES, REGISTERS, AND DIFFUSERS.
 - B. WHERE NOT NOTED, DIFFUSER NECK SIZE SHALL BE THE SAME AS THE BRANCH DUCT SIZE.

GENERAL NOTES:

- A. THESE DRAWINGS ARE DIAGRAMMATIC AND INDICATE THE GENERAL EXTENT OF THE WORK. PROVIDE SHEET METAL SYSTEMS COMPLETE AND PER APPLICABLE CODES INCLUDING ALL NECESSARY OFFSETS, FITTINGS AND SPECIAL RADII OR MITRED ELBOWS WHICH ARE REQUIRED DUE TO SPACE CONSTRAINTS OR OTHER CONDITIONS.
- B. COORDINATE THE INSTALLATION OF THE DUCTWORK AND EQUIPMENT WITH THE WORK OF ALL OTHER TRADES. VERIFY ALL CLEARANCES PRIOR TO THE FABRICATION OF ANY SYSTEM COMPONENTS.
- C. DUCTWORK SHALL NOT BE LOCATED OVER ELECTRICAL EQUIPMENT OR PANELS. PROVIDE THE CODE REQUIRED WORKING CLEARANCE AROUND ALL ELECTRICAL EQUIPMENT AND PANELS.
- D. PROVIDE ALL MISCELLANEOUS SUPPORTING STEEL, ETC. FOR THE PROPER INSTALLATION OF ALL MECHANICAL SYSTEMS.
- E. COORDINATE FLOOR, WALL, ROOF PENETRATIONS, LOUVER SIZES, PAD LOCATIONS, ETC. WITH THE ARCHITECTURAL TRADES.
- F. ALL DUCTWORK DIMENSIONS INDICATE THE INSIDE CLEAR DIMENSION.

PLAN NOTES:

1. PROVIDE CENTRIFUGAL FAN AS SCHEDULED MOUNTED HIGH IN MECHANICAL ROOM. PROVIDE 10" PVC PIPE DOWN TO APPROXIMATELY 12" AFF. JOG DUCTWORK TO BE TIGHT AGAINST WALLS IN CORNER TO ALLOW FOR REMOVAL OF CHEMICAL CONTAINERS WHEN REQUIRED. DISCHARGE DUCTWORK SHALL HAVE FLEXIBLE CONNECTION. PROVIDE 10" PVC PIPE DOWN TO DUCT PLENUM. JOG DUCTWORK AS REQUIRED TO MAKE CONNECTION TO DUCT PLENUM. COORDINATE EXACT LOCATION WITH ARCHITECTURAL ELEVATIONS.
2. PROVIDE LOUVER AS SCHEDULED TO REPLACE EXISTING LOUVER. REFER TO ARCHITECTURAL PLANS FOR SPECIFIC LOUVER LOCATION. CONTRACTOR SHALL FIELD VERIFY DIMENSIONS OF EXISTING LOUVER PRIOR TO ORDERING.
3. PROVIDE ROOF-MOUNTED FAN AS SCHEDULED. EXTEND 20x20 ALUMINUM DUCTWORK DOWN APPROXIMATELY 1'-6" INTO THE SPACE.
4. PROVIDE ALUMINUM EXHAUST GRILLE AS SCHEDULED APPROXIMATELY 0'-2" ABOVE THE BOTTOM OF THE EXHAUST DUCT.
5. PROVIDE LOUVER AS SCHEDULED. BOTTOM OF LOUVER SHALL BE 14" ABOVE BOTTOM OF DOOR.



WICHITA, KANSAS
Spray Ground
LINWOOD PARK



CASEY JOHN STEINER
LICENSE #19423

Date: 8-14-20 Job #: 1820529

Drawn: CDW Checked: MST

Issue: CONSTRUCTION DOCUMENTS

MECHANICAL PLAN,
DETAILS &
SCHEDULES

SP-M1