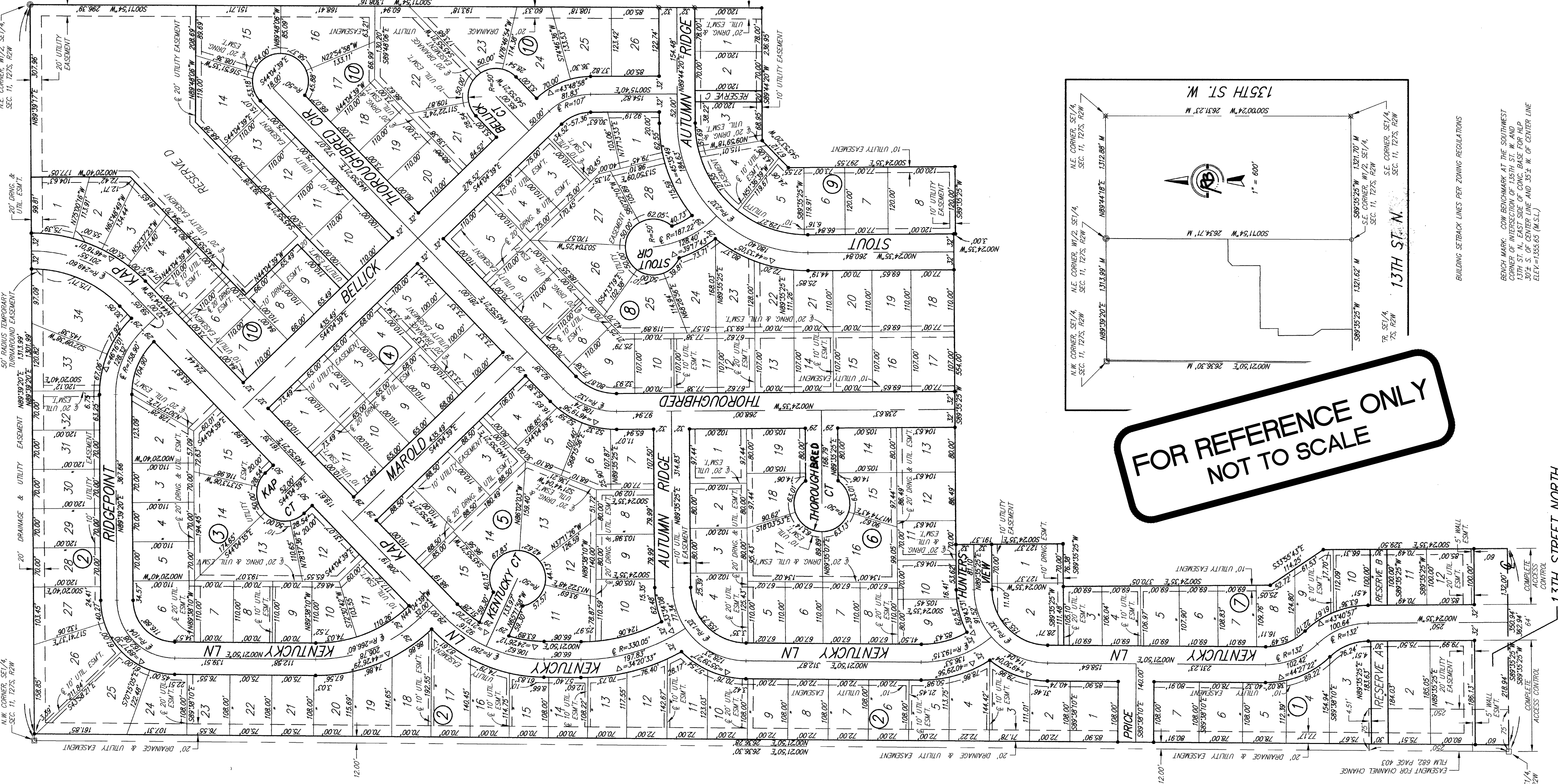


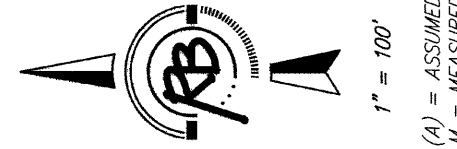
CHERYL'S HOLLOW SECOND ADDITION

Wichita, Sedgwick County, Kansas

PC 188-4



**FOR REFERENCE ONLY
NOT TO SCALE**



- SUBJECT MATTER LEGEND**
- = STONE (FOUND)
 - = WALL IN CENTER OF STONE (FOUND)
 - = 1/2" IRON PIPE (FOUND)
 - = 1" IRON PIPE (FOUND)
 - ⊗ = 1/2" REBAR W/BAUGHMAN CAP (FOUND)
 - ⊗ = 3/4" IRON PIPE W/SEDGWICK COUNTY ALUMINUM CAP (FOUND)
 - = 5/8" REBAR W/PAB CAP (SET)

BLOCK	LOT NO.	ELEVATION (N.G. 102)
7	1, 2, 3, 4, 5, 6	1384.5
	7, 8, 9, 10, 11, 12	1384.0
	13, 14, 15	1384.0

ON-SITE BENCH MARK: P.R. SPK ON NORTH FACE OF CORNER OF INTERSECTION OF 13TH ST. W. AND 30 1/2 S. OF CENTER LINE AND 35 1/2 W. OF CENTER LINE. ELEV.=1385.65 (N.G.S.L.)

MINIMUM BUILDING PAD ELEVATION FOR LOWEST OPENING INFO STRUCTURES	LOT NO.	ELEVATION (N.G. 102)
7	1, 2, 3, 4, 5, 6	1384.5
	7, 8, 9, 10, 11, 12	1384.0
	13, 14, 15	1384.0

State of Kansas) SS
Sedgwick County)

We, Ruggles & Bohm, P.A., Land Surveyors in abovesaid county and state, do hereby certify that, under the supervision of the undersigned, we have surveyed and platted "CHERYL'S HOLLOW SECOND ADDITION", Wichita, Sedgwick County, Kansas, and that the accompanying plat is a true and correct exhibit of the property surveyed, described as follows:

The west half of the SE 1/4, Sec. 11, T23S, R24W of the 6th P.M., Sedgwick County, Kansas, EXCEPT that the west 12.00 feet, AND EXCEPT that part platted as Cheryl's Hollow, Wichita, Sedgwick County, Kansas.

All public easements and dedications are hereby vacated by virtue of K.S.A. 12-512(b).

Ruggles & Bohm, P.A.

Thomas C. Ruggles
Land Surveyor

Know all men by these presents that we, the undersigned, have caused the land described in the surveyor's certificate to be platted into Lots, Blocks, Reserves and Streets, to be known as "CHERYL'S HOLLOW SECOND ADDITION", Wichita, Sedgwick County, Kansas. Utility easements are hereby granted for the construction and maintenance of all public utilities. Drainage easements are hereby granted to the public as indicated for drainage purposes. Reserves "A, B and C" are hereby reserved for irrigation, landscaping, drainage structures and utilities confined to easements. Reserve "D" is here by reserved for irrigation, gazebos, playground structures, picnic areas, tables with canopies, walks, lighting, landscaping, berms, lakes, drainage, drainage structures, and utilities confined to easements. The Reserves shall be owned and maintained by the Home Owners Association for the addition. The streets are hereby dedicated to and for the use of the public. Access Controls as indicated are hereby granted to the appropriate governing body. The Temporary Turnaround easement is hereby granted for the use of the public, and will expire upon extension of the street beyond the limits of this plat. A drainage plan has been developed for this plat; all drainage easements, rights-of-way, or reserves shall remain at established grades, or as modified with the approval of the City Engineer, and unobstructed to allow for the conveyance of storm water.

Rick Thompson Construction, Inc.

Rick Thompson
President

State of Kansas) SS
Sedgwick County)

The foregoing instrument acknowledged before me, this 18th day of April, 2006, by Rick Thompson, President of Rick Thompson Construction, Inc., on behalf of the corporation.

MILDRED E. FRANZ
NOTARY PUBLIC
STATE OF KANSAS

My appointment expires 02-13-2007

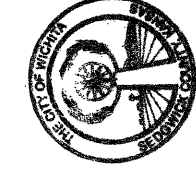
This plat of "CHERYL'S HOLLOW", Wichita, Sedgwick County, Kansas, has been submitted to and approved by the Wichita-Sedgwick County Metropolitan Area Planning Commission, Wichita, Kansas. Dated this 5th day of January, 2006.

Wichita-Sedgwick County Metropolitan Area Planning Commission

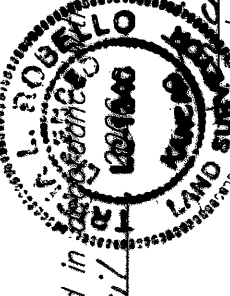


Harold Schlemmer, Jr.
Chair
John L. Schlegel
Secretary

This plat approved and all dedications shown hereby accepted, the City Council of the City of Wichita, Kansas, this day of Sept.

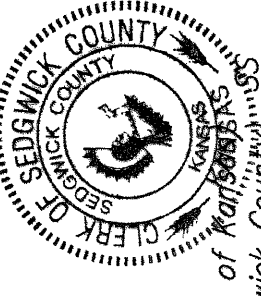


At the Direction of the City Council
Mayor
City Clerk



Reviewed in K.S.A. 58-2005 on this 20th day of April, 2006
Deputy County Surveyor
Sedgwick County Kansas

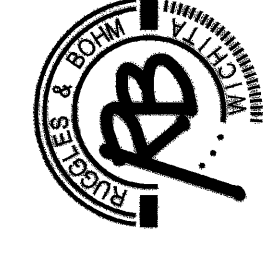
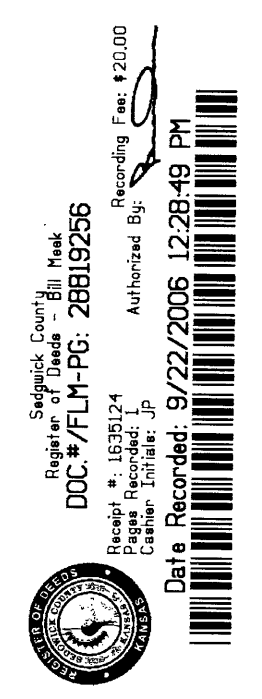
Entered on transfer record this 22nd day of September, 2006.



County Clerk

This is to certify that this plat has been filed for record in the office of the Register of Deeds, this 20th day of September, 2006, at 12:28:49 o'clock P.M., and is duly recorded.

Bill Meek
Deputy



Ruggles & Bohm, P.A.
Engineering, Surveying, Land Planning
924 North Main
Wichita, Kansas 67203
E-mail: info@rbkansas.com