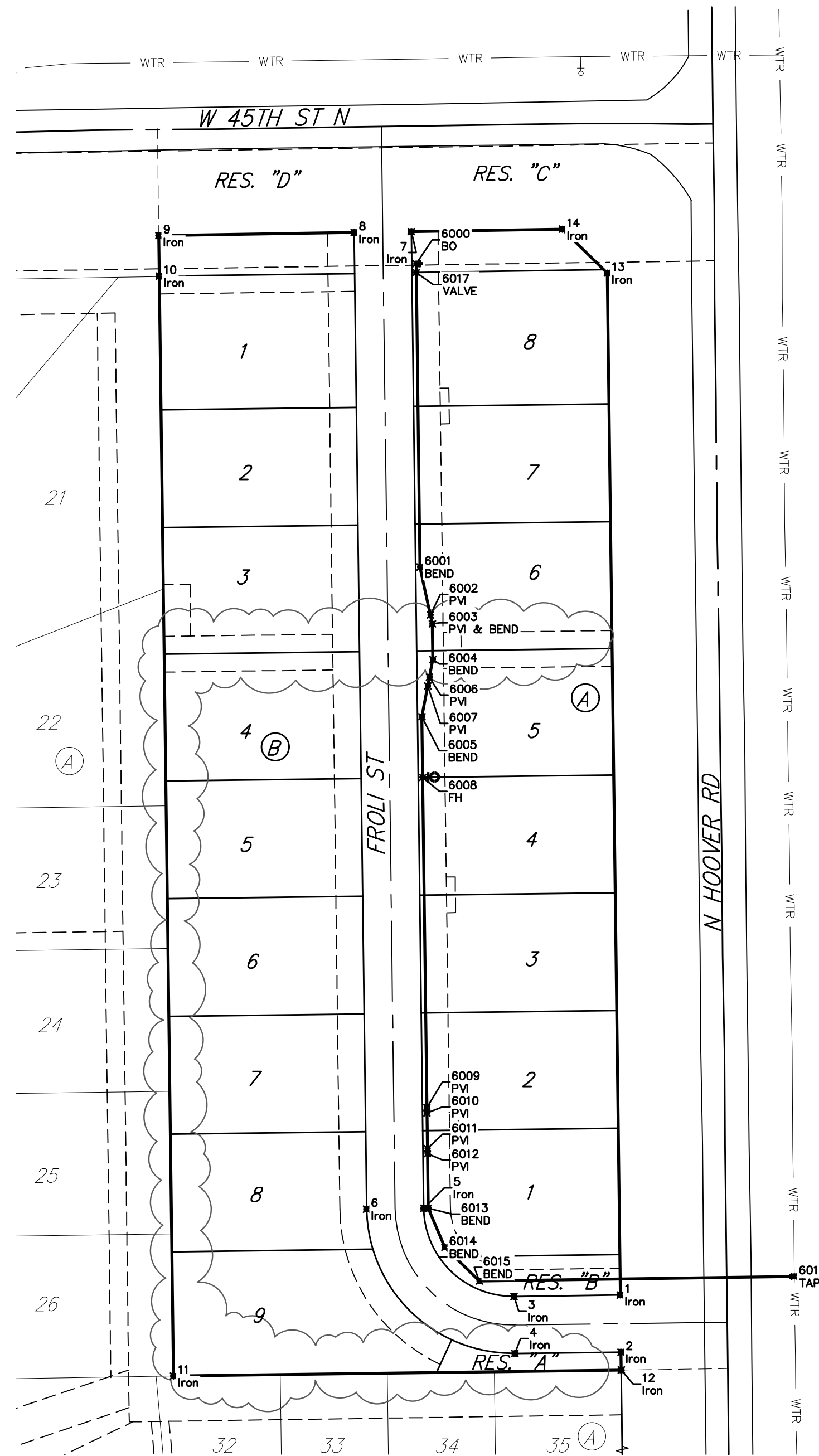
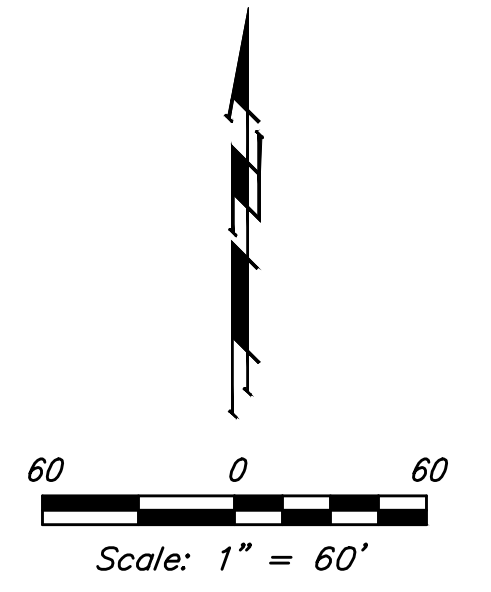


BENCHMARKS:
 disk adjacent to fire hydrant in SW corner of Lot 22 BLK A, Edgewater 3rd Addition
 Elev. = 1337.95 NAVD29

rail road spike in N face of power pole E of Lot 3 BLK A, Edgewater 4th Addition
 Elev. = 1336.93 NAVD29




COORDINATES			
Point #	Northing	Easting	Description
1	34460.49	50502.55	Iron
2	34428.49	50502.96	Iron
3	34459.69	50443.01	Iron
4	34427.69	50443.44	Iron
5	34509.05	50392.35	Iron
6	34508.64	50380.35	Iron
7	35056.59	50385.39	Iron
8	35056.08	50353.39	Iron
9	35054.32	50243.89	Iron
10	35031.62	50244.18	Iron
11	34415.13	50252.12	Iron
12	34418.49	50503.08	Iron
13	35033.30	50495.26	Iron
14	35057.95	50470.11	Iron

COORDINATES			
Point #	Northing	Easting	Description
6000	35038.64	50388.12	BO
6001	34868.56	50390.28	BEND
6002	34841.68	50396.10	PVI
6003	34836.70	50397.18	PVI & BEND
6004	34816.70	50397.44	BEND
6005	34784.67	50391.35	BEND
6006	34806.86	50395.57	PVI
6007	34801.93	50394.63	PVI
6008	34750.62	50391.78	FH
6009	34565.50	50394.13	PVI
6010	34562.56	50394.17	PVI
6011	34542.56	50394.42	PVI
6012	34539.74	50394.46	PVI
6013	34509.08	50394.85	BEND

COORDINATES			
Point #	Northing	Easting	Description
6014	34487.24	50404.22	BEND
6015	34468.35	50423.60	BEND
6016	34470.90	50600.09	TAP
6017	35033.64	50388.18	VALVE



	Edge Water 4th Addition	
	COORDINATES	
Water Distribution System		
<small>Baughman Company, P.A. 315 Ellis St. Wichita, KS 67211 P 316-262-7271 F 316-262-0149 ENGINEERING SURVEYING PLANNING LANDSCAPE ARCHITECTURE</small>		
PROJECT NUMBER 448-2020-012804	DESIGN AEG	DRAWN CDW
REVISIONS:	APPROVED	DATE 09/10/20
SCALE Noted		SHEET 11 OF 12