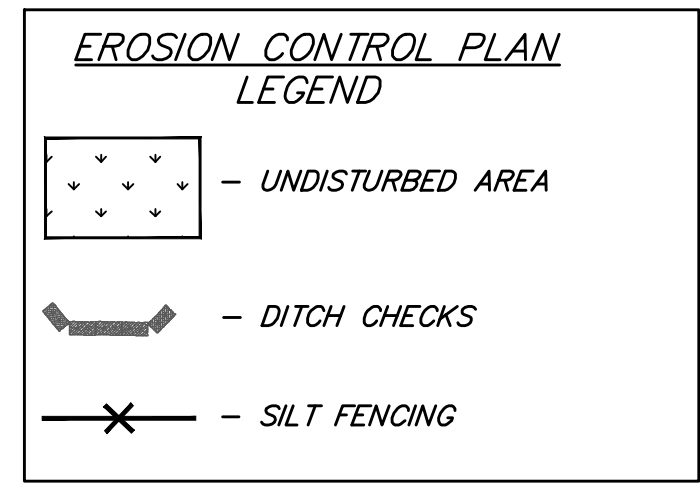
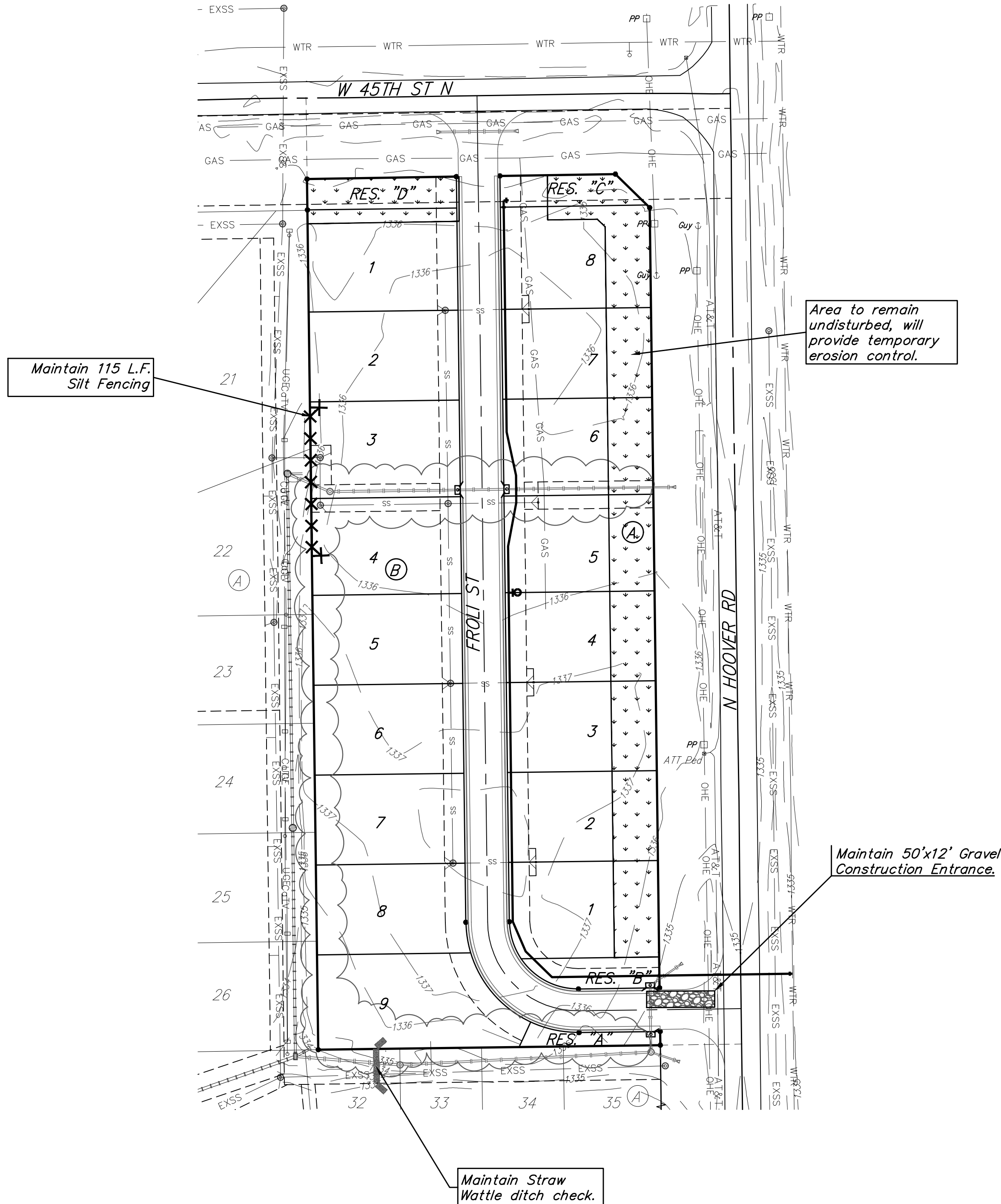
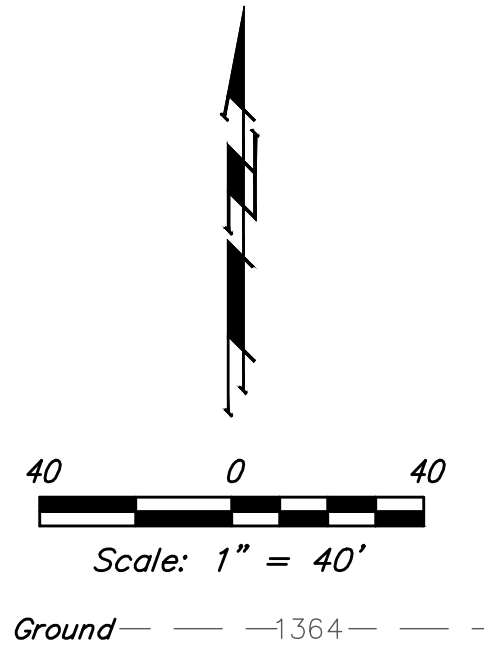


BENCHMARKS:
 disk adjacent to fire hydrant in SW corner of Lot 22 BLK A, Edgewater 3rd Addition
 Elev. = 1337.95 NAVD29

rail road spike in N face of power pole
 E of Lot 3 BLK A, Edgewater 4th Addition
 Elev. = 1336.93 NAVD29



EROSION CONTROL MEASURE	INSTALL	MAINTAIN
BACK OF CURB PROTECTION (LF)	0	0
DITCH CHECK (EA)	0	1
CONSTRUCTION ENTRANCE (EA)	0	1
CURB INLET BARRIER (EA)	0	0
CUT-OFF TRENCH (LF)	0	0
DROP INLET PROTECTION (EA)	0	0
SILT FENCE (LF)	0	115
EROSION CONTROL MAT (SY)	0	0
MAINTAIN EROSION CONTROL BMP's (LS)	0	0

* ALL EXISTING BMPs INCLUDING CONSTRUCTION ENTRANCE, SEDIMENT BARRIERS, SILT FENCE, CUT-OFF TRENCH, AND EROSION CONTROL MAT SHALL BE MAINTAINED AND REPAIRED IF NECESSARY.

- NOTES:**
- Contractor shall make sure all erosion control is in place before project is accepted. This plan represents the minimum standard. Any additional erosion control measures shall be installed by the Contractor as needed.
 - Removal of Gravel Construction Entrance for pavement construction shall be included in bid item "Site Clearing"
 - This Plan is Not To Be Used As A Comprehensive Grading Plan. All Spot Elevations Are Proposed & Subject To Change.
- All areas disturbed during construction shall be seeded, mulched, and fertilized as per Cover Sheet General Notes.



Baughman Edge Water 4th Addition
EROSION CONTROL
 Water Distribution System

Baughman Company, P.A. 315 Ellis St. Wichita, KS 67211 P 316-262-7271 F 316-262-0149
 ENGINEERING | SURVEYING | PLANNING | LANDSCAPE ARCHITECTURE

PROJECT NUMBER 448-2020-012804	DESIGN AEG	DRAWN CDW
REVISIONS:	APPROVED	DATE 09/10/20
	SCALE Noted	
	SHEET	5 OF 12