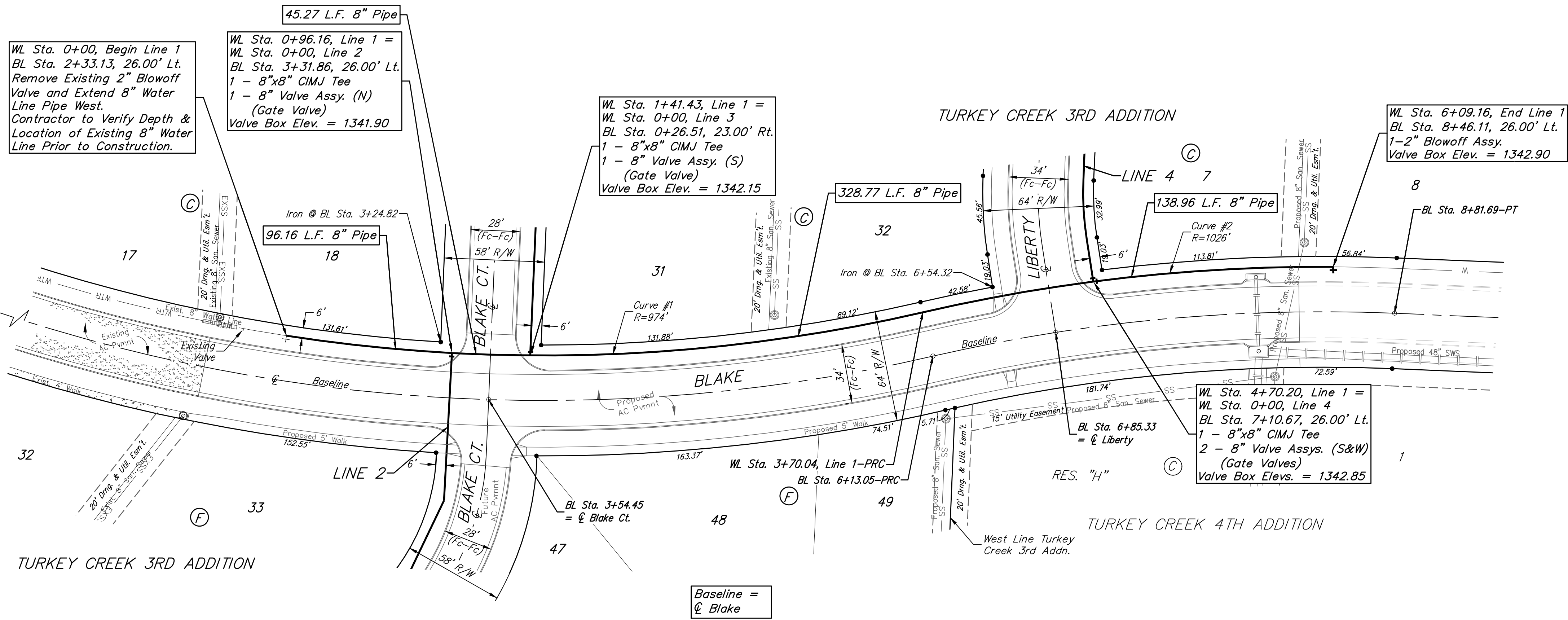


BENCHMARKS:

BM #1: "□" Cut in top of curb, south of SE corner of Lot 82, Block A, Turkey Creek 3rd Addition.
Elev. = 1335.49 NGVD29

BM #2: "□" Cut on top of curb inlet, SW of the SE corner of Lot 81, Block A, Turkey Creek 3rd Addition.
Elev. = 1335.95 NGVD29

BM #3: "□" Cut on top of yard inlet, 5' N & 43.5' E of the SE corner of Lot 28, Block H, Turkey Creek 3rd Addition.
Elev. = 1335.95 NGVD29

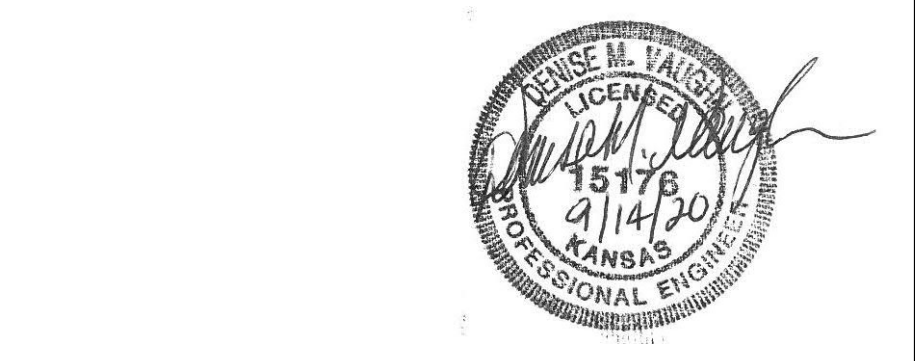
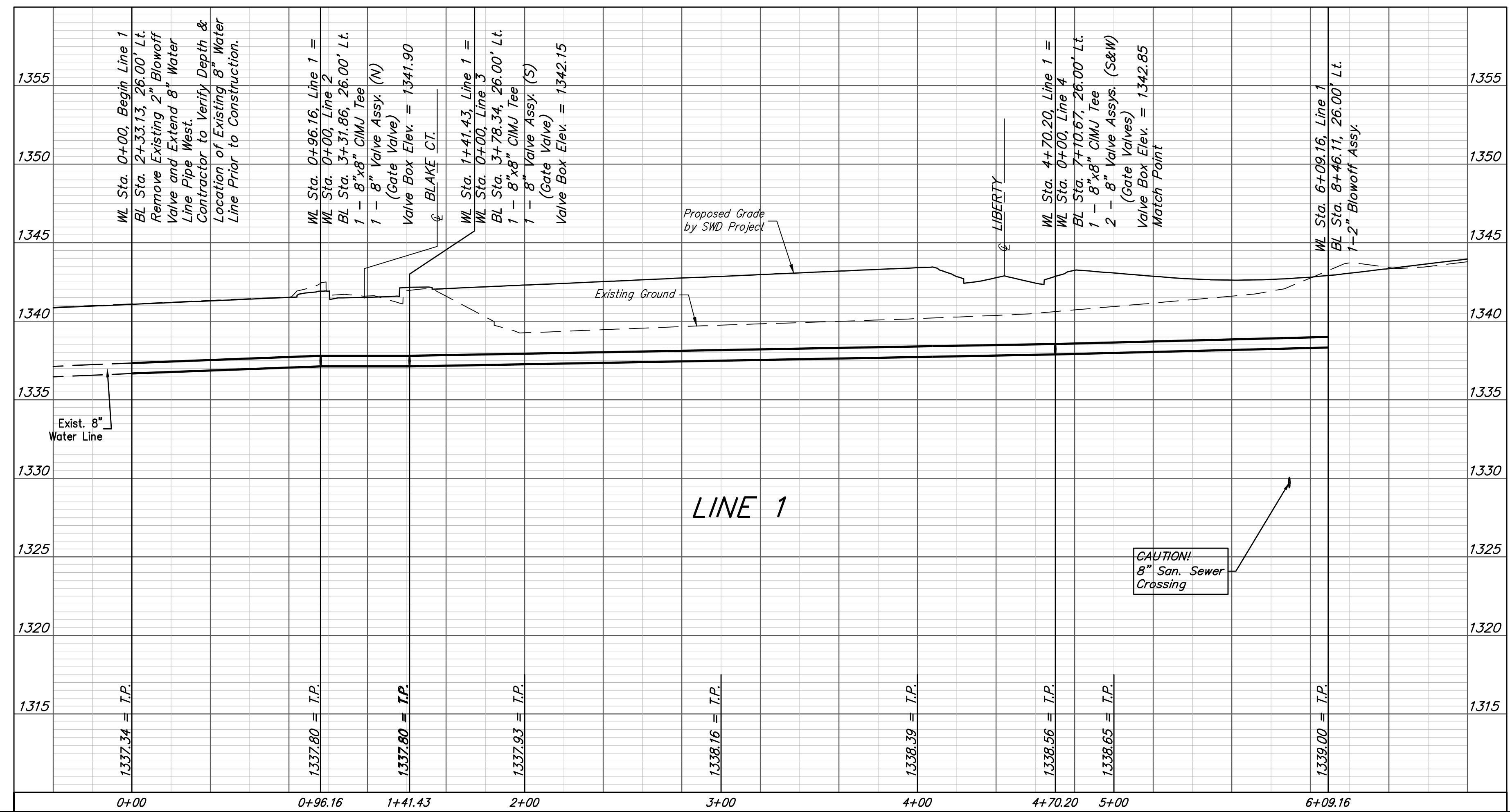


Curve #1
Curve Data Based on Centerline of Pipe
Rad. = 974' Delta = 21°46'07" Tangent = 187.29'
Arc = 370.04' L.C. = 367.83' Def./Ft. = 1.76483 Min.

Station	Arc	Chord 8' Left	Defl.	Total Defl.
0+00.00	-	-	0°00'00"	0°00'00"
0+25.00	25.00'	24.80'	0°44'07"	0°44'07"
0+50.00	25.00'	24.80'	0°44'07"	1°28'14"
0+75.00	25.00'	24.80'	0°44'08"	2°12'22"
0+96.16	21.16'	20.99'	0°37'20"	2°49'42"
1+00.00	3.84'	3.81'	0°06'47"	2°56'29"
1+25.00	25.00'	24.80'	0°44'07"	3°40'36"
1+41.43	16.43'	16.30'	0°29'00"	4°09'36"
1+50.00	8.57'	8.50'	0°15'07"	4°24'43"
1+75.00	25.00'	24.80'	0°44'08"	5°08'51"
2+00.00	25.00'	24.80'	0°44'07"	5°52'58"
2+25.00	25.00'	24.80'	0°44'07"	6°37'05"
2+50.00	25.00'	24.80'	0°44'07"	7°21'12"
2+75.00	25.00'	24.80'	0°44'08"	8°05'20"
3+00.00	25.00'	24.80'	0°44'07"	8°49'27"
3+25.00	25.00'	24.80'	0°44'07"	9°33'34"
3+50.00	25.00'	24.80'	0°44'07"	10°17'41"
3+70.04	20.04'	19.88'	0°35'22"	10°53'03"

Curve #2
Curve Data Based on Centerline of Pipe
Rad. = 1026' Delta = 13°21'13" Tangent = 120.11'
Arc = 239.12' L.C. = 238.58' Def./Ft. = 1.67534 Min.

Station	Arc	Chord 8' Left	Defl.	Total Defl.
3+70.04	-	-	0°00'00"	0°00'00"
3+75.00	4.96'	5.00'	0°08'19"	0°08'19"
4+00.00	25.00'	25.19'	0°41'53"	0°50'12"
4+25.00	25.00'	25.19'	0°41'53"	1°32'05"
4+50.00	25.00'	25.19'	0°41'53"	2°13'58"
4+70.20	20.20'	20.36'	0°33'50"	2°47'48"
4+75.00	4.80'	4.84'	0°08'03"	2°55'51"
5+00.00	25.00'	25.19'	0°41'53"	3°37'44"
5+25.00	25.00'	25.19'	0°41'53"	4°19'37"
5+50.00	25.00'	25.19'	0°41'53"	5°01'30"
5+75.00	25.00'	25.19'	0°41'53"	5°43'23"
6+00.00	25.00'	25.19'	0°41'53"	6°25'16"
6+09.16	9.16'	9.23'	0°15'20"	6°40'36"



Baughman Turkey Creek 3rd Addition - Phase 4
LINE 1
Water Distribution System

Baughman Company, P.A. 315 Ellis St. Wichita, KS 67211 P 316-262-7271 F 316-262-0149
ENGINEERING | SURVEYING | PLANNING | LANDSCAPE ARCHITECTURE

PROJECT NUMBER: 448-2020-016837
DESIGN: DMV
APPROVED: [Signature]
DATE: 9/10/2020

REVISIONS:

SCALE: Noted
SHEET: **4 OF 16**

E:\Projects\Turkey Creek 3rd\Engineering\Phase 4\Wtr 2020-E496\WTR PLANS.dwg