

BENCHMARKS:
 135th St. W. & Pawnee
 City of Wichita Benchmark Disc,
 Northeast Corner of Intersection
 On SW Corner of Concrete Base
 of High Line Pole.
 Elev. = 1359.65 NGVD29

City of Wichita Benchmark Disc,
 0.4 Mi. South of Kellogg On
 135th St. W., West Side of
 Concrete Base for High Line
 Pole, West of K.G.&E.
 Substation, 135± South of
 Railroad Tracks On East Side of
 135th St. W.
 Elev. = 1367.77 NGVD29

POND DATA:
 Static Pool Elev. = 1336.0
 Bottom Elev. = 1328.0
 100YR DWS = 1339.8

Sta. 0+00, Line 2
 Begin Construction of 36"
 RCP w/ End Section and
 33 S.Y. of Light Stone
 Rip-Rap as Indicated.
 Contractor to restrain End
 Section and last two sections of
 pipe per City of Wichita Specs.

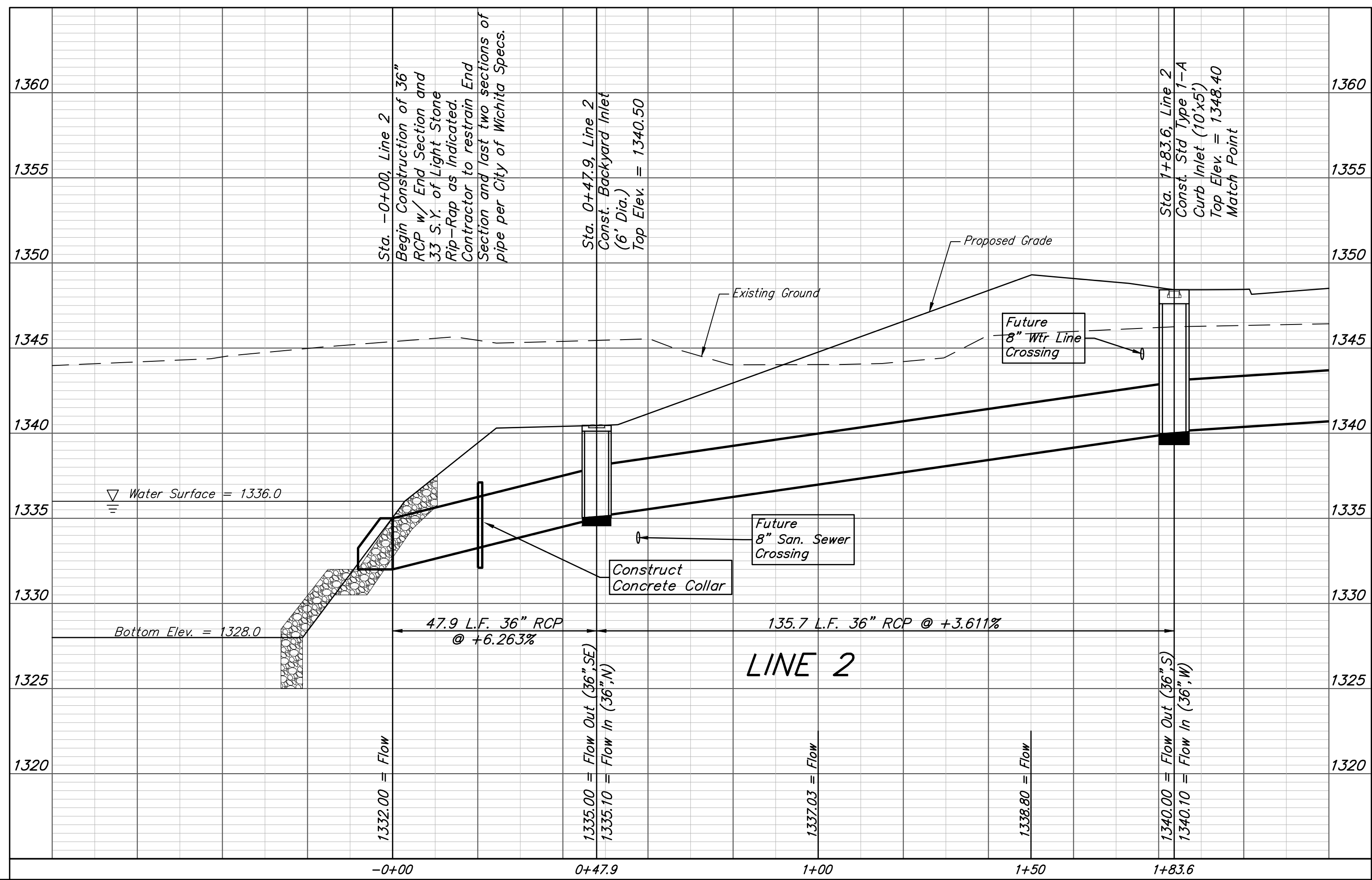
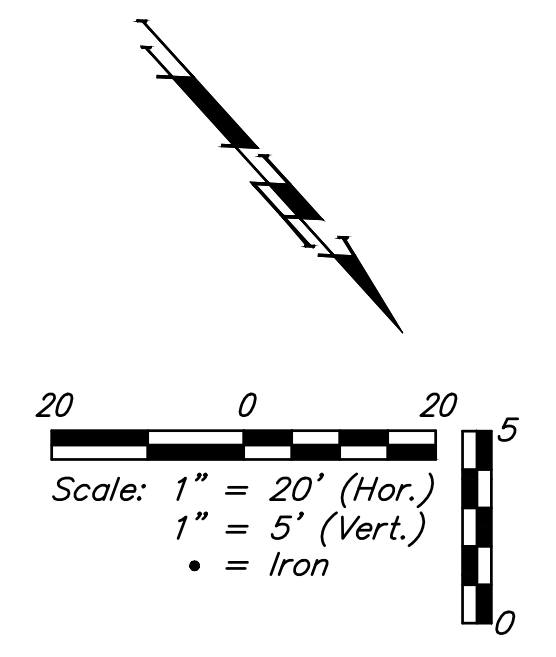
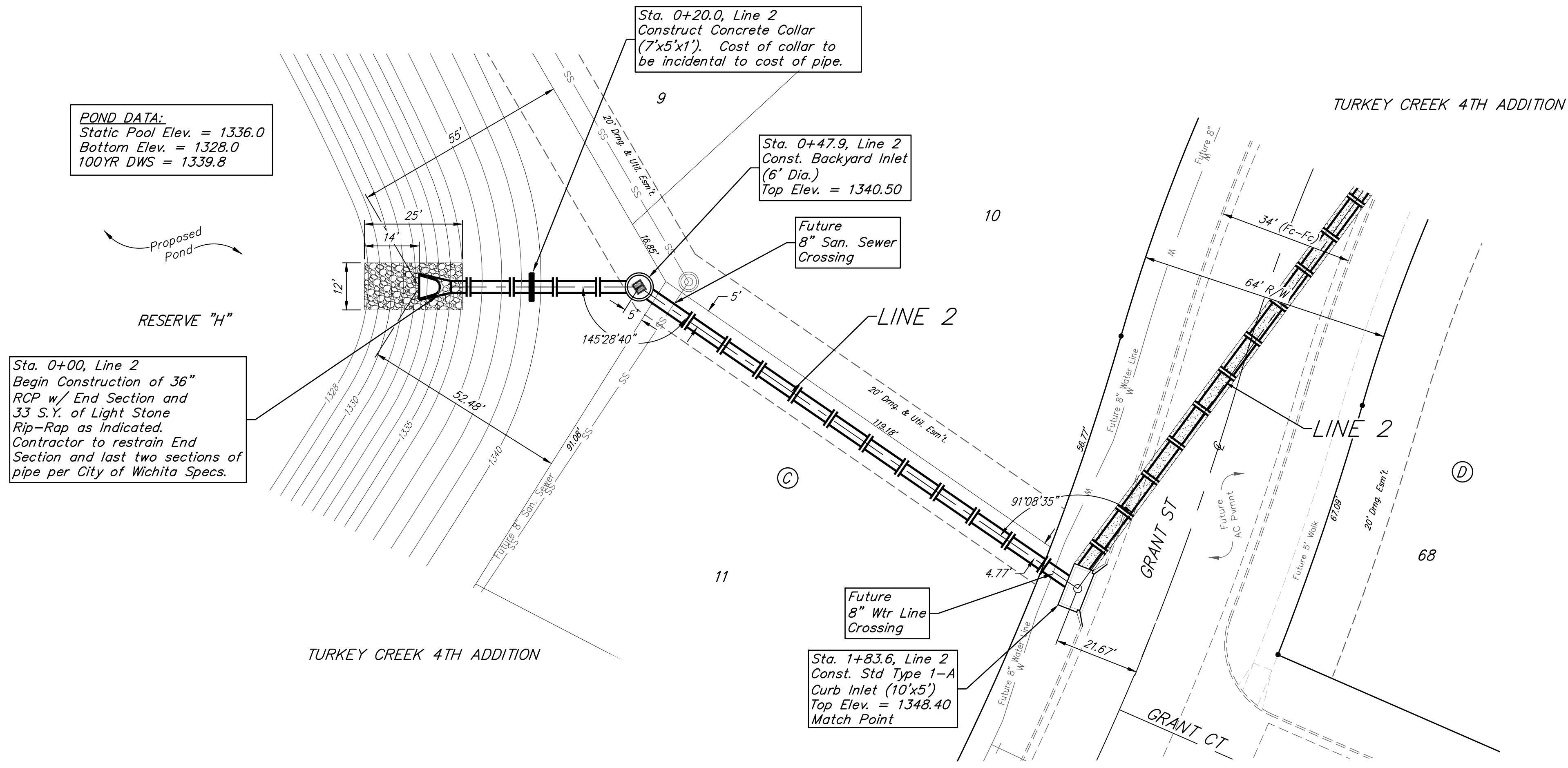
Sta. 0+20.0, Line 2
 Construct Concrete Collar
 (7'x5'x1'). Cost of collar to
 be incidental to cost of pipe.

Sta. 0+47.9, Line 2
 Const. Backyard Inlet
 (6' Dia.)
 Top Elev. = 1340.50

Future
 8" San. Sewer
 Crossing

Future
 8" Wtr Line
 Crossing

Sta. 1+83.6, Line 2
 Const. Std Type 1-A
 Curb Inlet (10'x5')
 Top Elev. = 1348.40
 Match Point



	Turkey Creek 4th Addition	
	LINE 2	
Storm Water Drain #467		
<small>Baughman Company, P.A. 315 Ellis St. Wichita, KS 67211 P 316-262-7271 F 316-262-0149 ENGINEERING SURVEYING PLANNING LANDSCAPE ARCHITECTURE</small>		
PROJECT NUMBER 468-2020-085444	DESIGN DMV	DRAWN JAK
REVISIONS:	APPROVED DATE 9/20/2020	SCALE Noted SHEET 12 OF 65