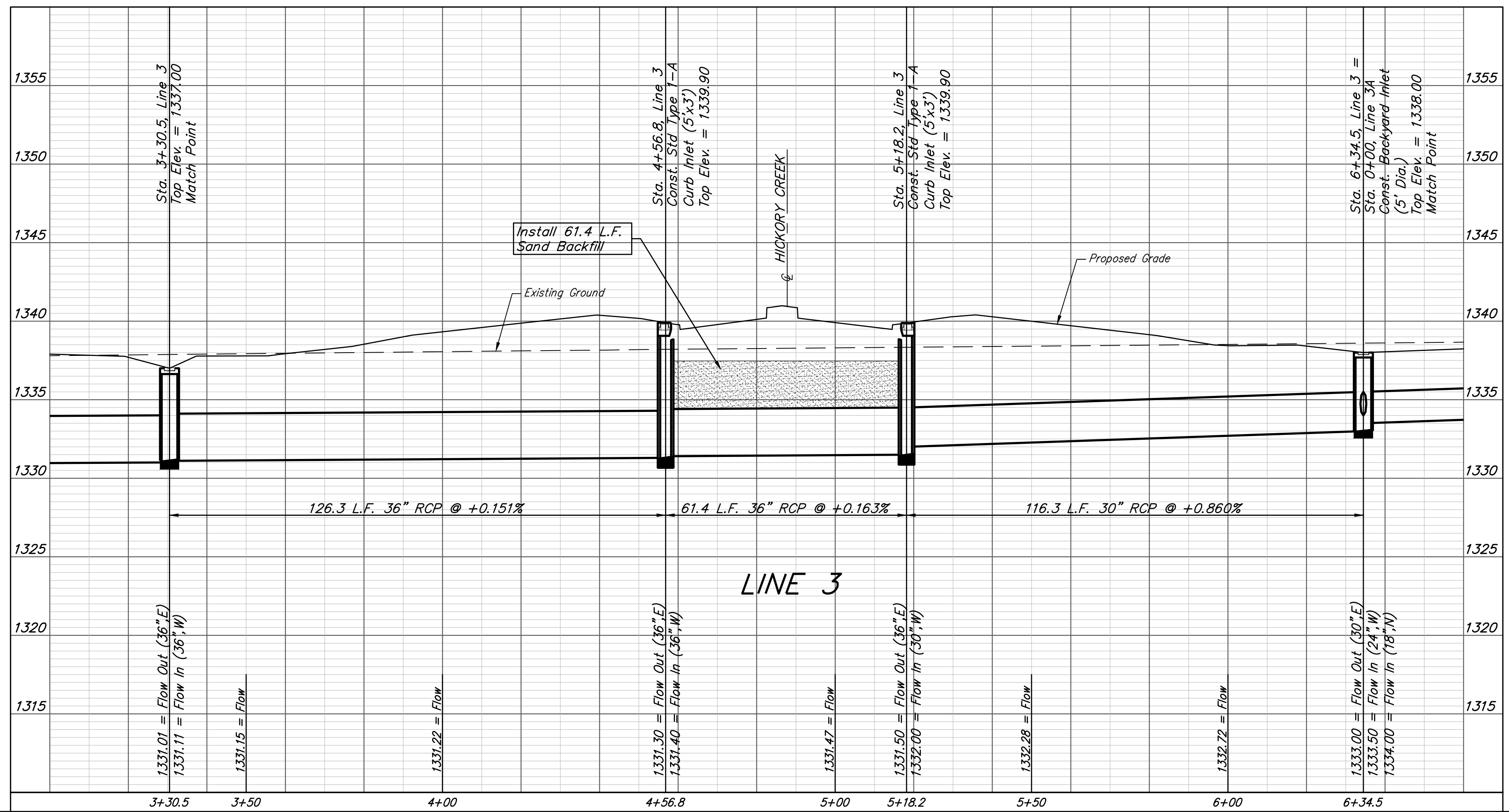
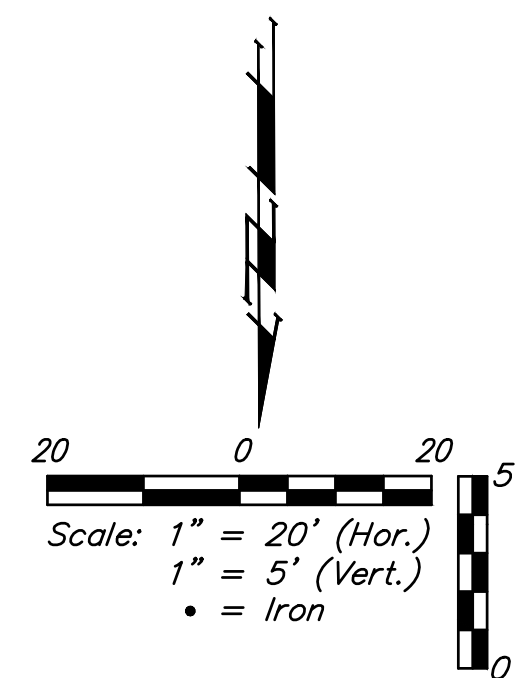
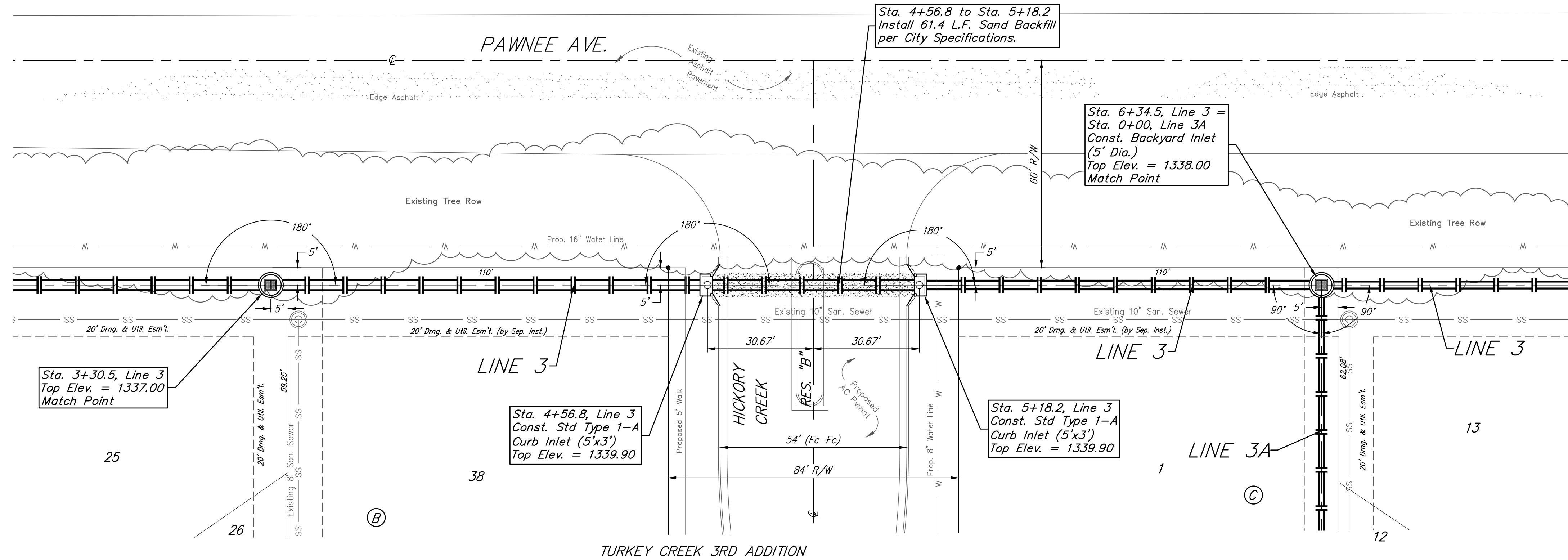


**BENCHMARKS:**  
 135th St. W. & Pawnee  
 City of Wichita Benchmark Disc,  
 Northeast Corner of Intersection  
 On SW Corner of Concrete Base  
 of High Line Pole.  
 Elev. = 1359.65 NGVD29

City of Wichita Benchmark Disc,  
 0.4 Mi. South of Kellogg On  
 135th St. W., West Side of  
 Concrete Base for High Line  
 Pole, West of K.G.&E.  
 Substation, 135'± South of  
 Railroad Tracks On East Side of  
 135th St. W.  
 Elev. = 1367.77 NGVD29



<b>Turkey Creek 4th Addition</b> <b>LINE 3</b> Storm Water Drain #467		
		<small>Baughman Company, P.A. 315 Ellis St. Wichita, KS 67211 P 316-262-7271 F 316-262-0149          ENGINEERING   SURVEYING   PLANNING   LANDSCAPE ARCHITECTURE</small>
PROJECT NUMBER <b>468-2020-085444</b>	DESIGN DMV	DRAWN JAK
REVISIONS:	APPROVED [Signature]	DATE 9/20/2020
SCALE Noted		SHEET <b>19 OF 65</b>