

**BENCHMARKS:**  
 135th St. W. & Pawnee  
 City of Wichita Benchmark Disc,  
 Northeast Corner of Intersection  
 On SW Corner of Concrete Base  
 of High Line Pole.  
 Elev. = 1359.65 NGVD29

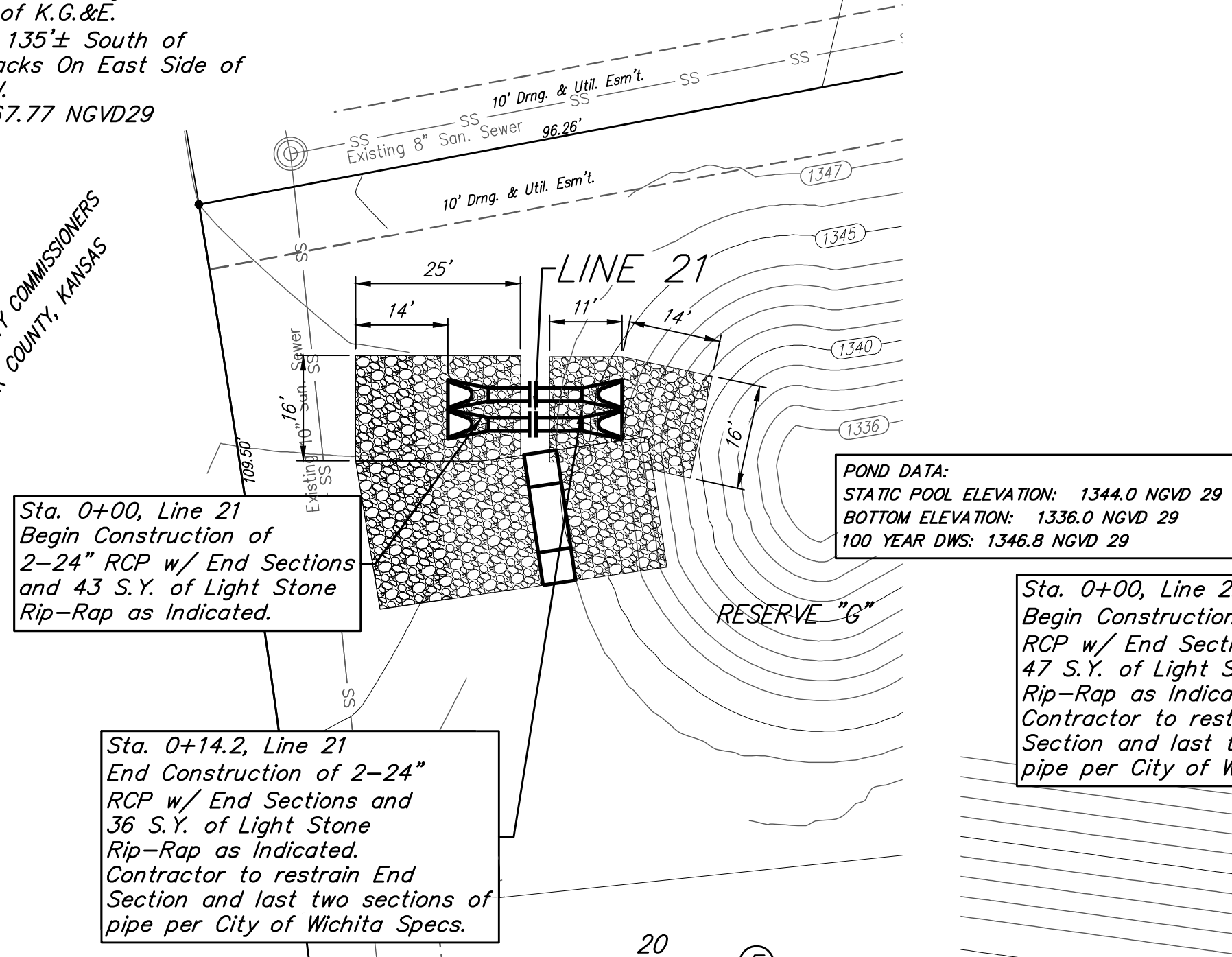
City of Wichita Benchmark Disc,  
 0.4 Mi. South of Kellogg On  
 135th St. W., West Side of  
 Concrete Base for High Line  
 Pole, West of K.G.&E.  
 Substation, 135± South of  
 Railroad Tracks On East Side of  
 135th St. W.  
 Elev. = 1367.77 NGVD29

TURKEY CREEK 3RD ADDITION

49 (A)

48

BOARD OF COUNTY COMMISSIONERS  
 OF SEDGWICK COUNTY, KANSAS



Sta. 0+00, Line 21  
 Begin Construction of  
 2-24" RCP w/ End Sections  
 and 43 S.Y. of Light Stone  
 Rip-Rap as Indicated.

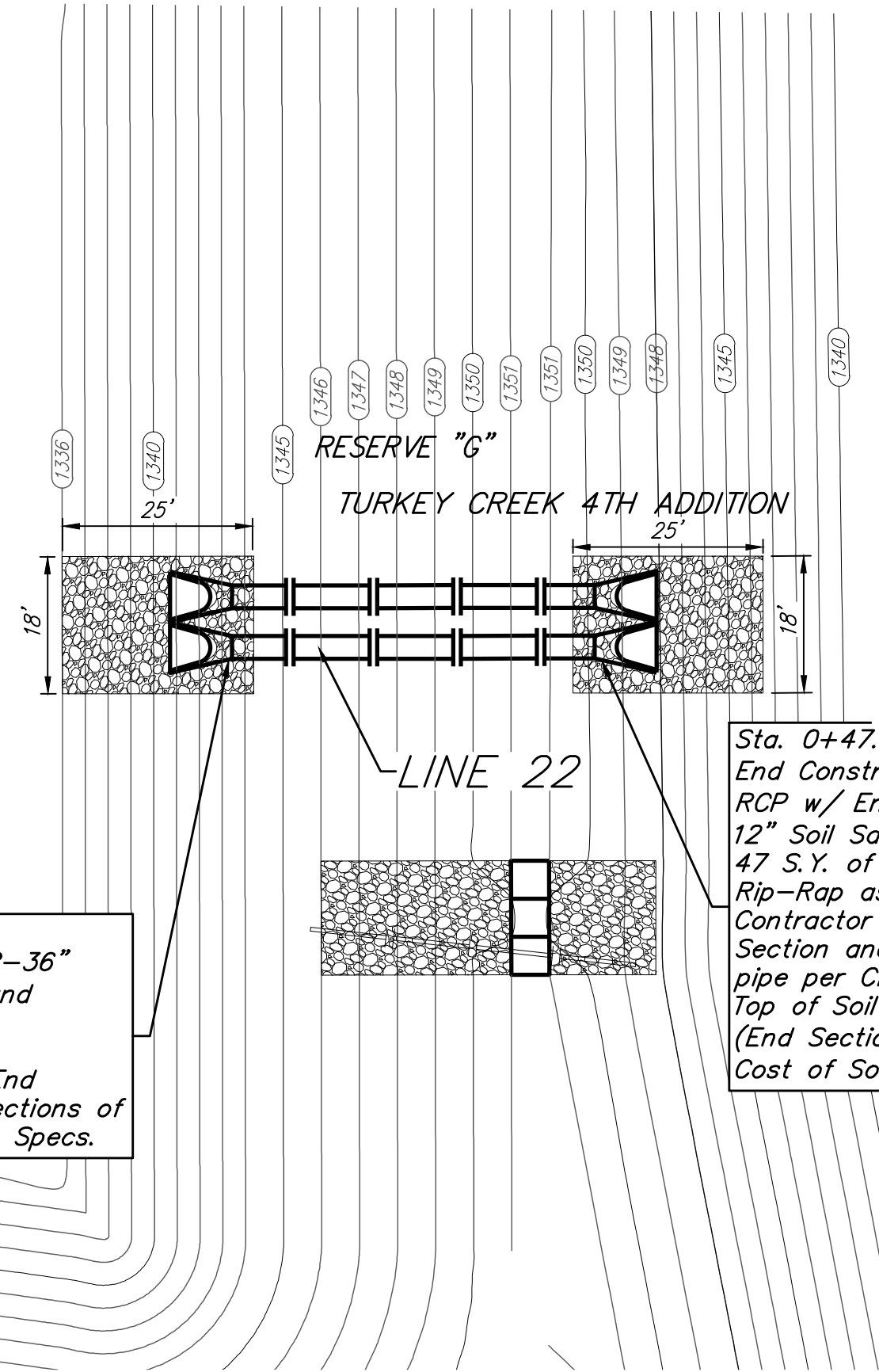
Sta. 0+14.2, Line 21  
 End Construction of 2-24"  
 RCP w/ End Sections and  
 36 S.Y. of Light Stone  
 Rip-Rap as Indicated.  
 Contractor to restrain End  
 Section and last two sections of  
 pipe per City of Wichita Specs.

POND DATA:  
 STATIC POOL ELEVATION: 1344.0 NGVD 29  
 BOTTOM ELEVATION: 1336.0 NGVD 29  
 100 YEAR DWS: 1346.8 NGVD 29

Sta. 0+00, Line 22  
 Begin Construction of 2-36"  
 RCP w/ End Sections and  
 47 S.Y. of Light Stone  
 Rip-Rap as Indicated.  
 Contractor to restrain End  
 Section and last two sections of  
 pipe per City of Wichita Specs.

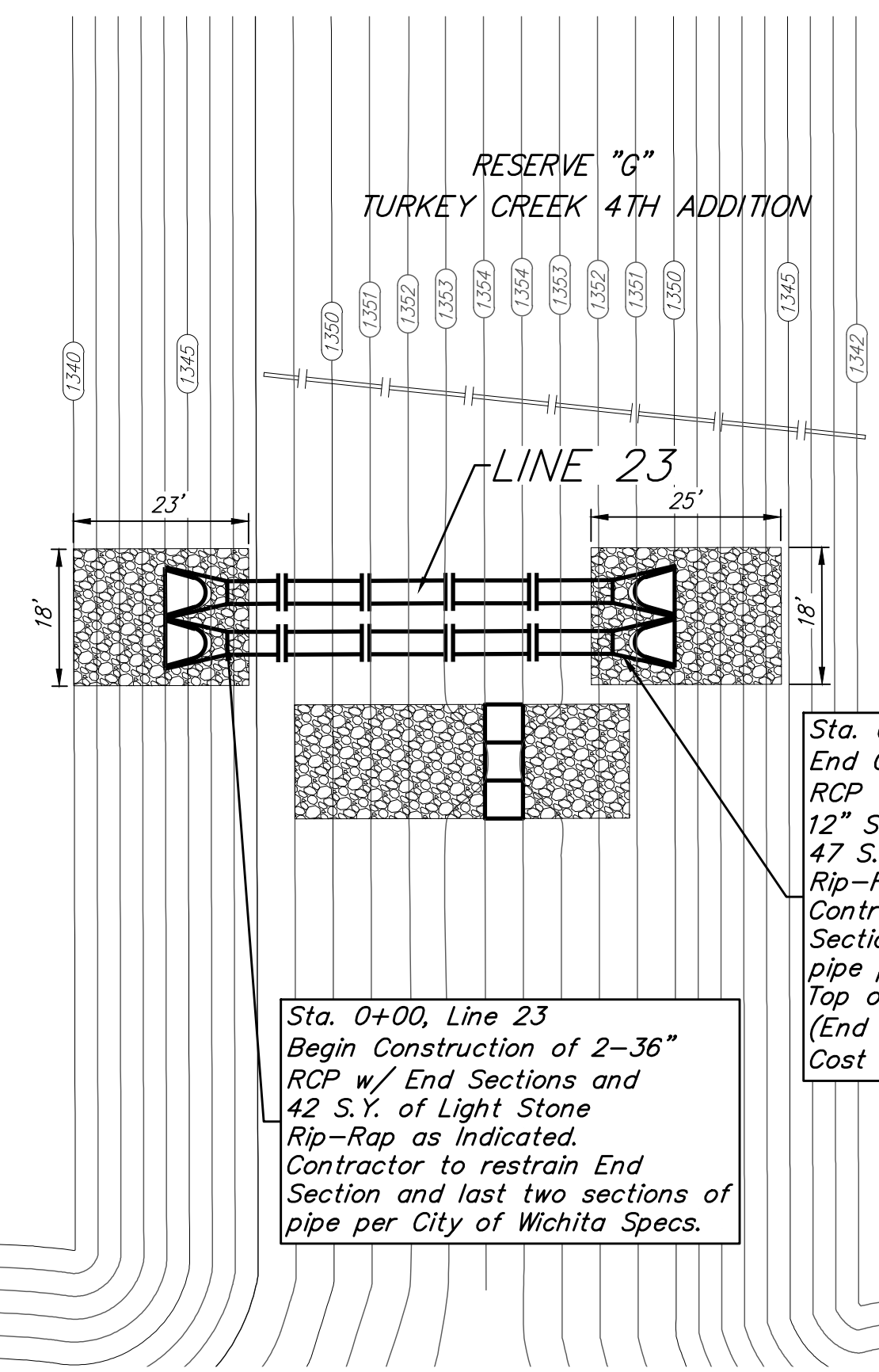
TURKEY CREEK 4TH ADDITION

20 (E)



POND DATA:  
 STATIC POOL ELEVATION: 1348.0 NGVD 29  
 BOTTOM ELEVATION: 1340.0 NGVD 29  
 100 YEAR DWS: 1351.3 NGVD 29

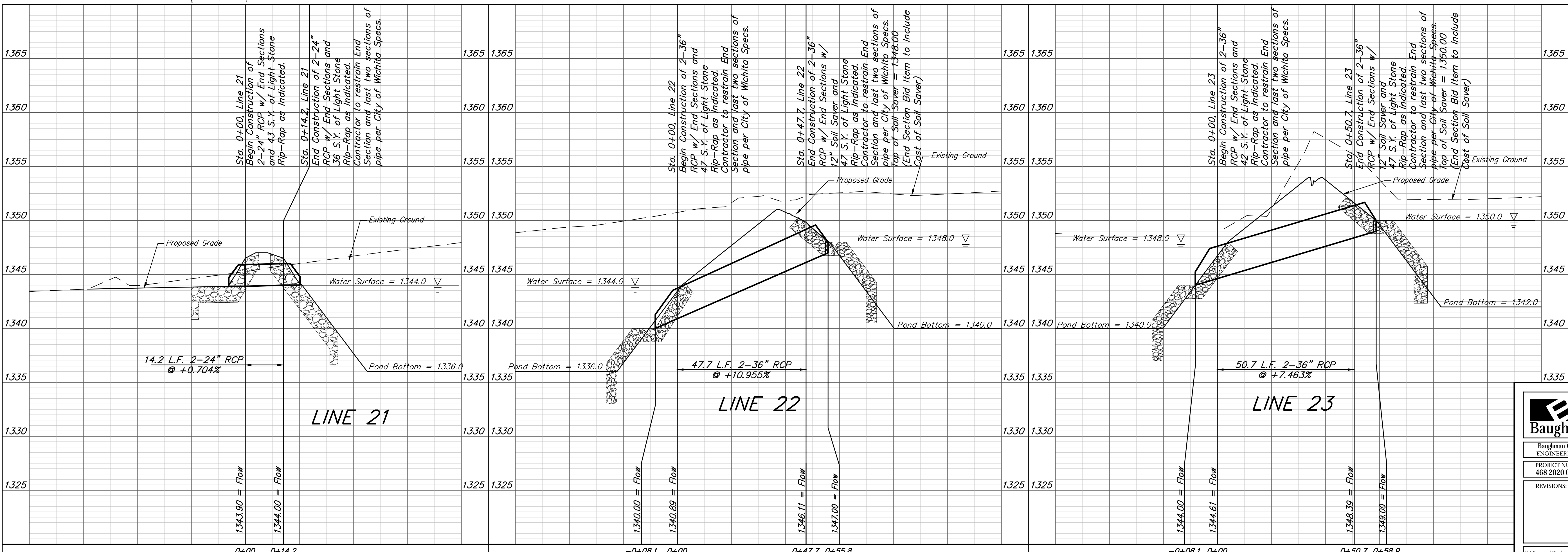
Sta. 0+47.7, Line 22  
 End Construction of 2-36"  
 RCP w/ End Sections w/  
 12" Soil Saver and  
 47 S.Y. of Light Stone  
 Rip-Rap as Indicated.  
 Contractor to restrain End  
 Section and last two sections of  
 pipe per City of Wichita Specs.  
 Top of Soil Saver = 1348.00  
 (End Section Bid Item to Include  
 Cost of Soil Saver)



Sta. 0+00, Line 23  
 Begin Construction of 2-36"  
 RCP w/ End Sections and  
 42 S.Y. of Light Stone  
 Rip-Rap as Indicated.  
 Contractor to restrain End  
 Section and last two sections of  
 pipe per City of Wichita Specs.

Sta. 0+50.7, Line 23  
 End Construction of 2-36"  
 RCP w/ End Sections w/  
 12" Soil Saver and  
 47 S.Y. of Light Stone  
 Rip-Rap as Indicated.  
 Contractor to restrain End  
 Section and last two sections of  
 pipe per City of Wichita Specs.  
 Top of Soil Saver = 1350.00  
 (End Section Bid Item to Include  
 Cost of Soil Saver)

POND DATA:  
 STATIC POOL ELEVATION: 1350.0 NGVD 29  
 BOTTOM ELEVATION: 1342.0 NGVD 29  
 100 YEAR DWS: 1353.7 NGVD 29



**Baughman** Turkey Creek 4th Addition  
**LINES 21, 22, & 23**  
 Storm Water Drain #467

Baughman Company, P.A. 315 Ellis St. Wichita, KS 67211 P 316-262-7271 F 316-262-0149  
 ENGINEERING | SURVEYING | PLANNING | LANDSCAPE ARCHITECTURE

PROJECT NUMBER: 468-2020-085444  
 DESIGN: DMV DRAWN: JAK  
 APPROVED: DATE: 9/20/2020  
 SCALE: Noted  
 SHEET: 42 OF 65

REVISIONS:

E:\Projects\Turkey Creek 4th\Engineering\Phase 1\SWD\_2020\467\SWD PLANS.dwg