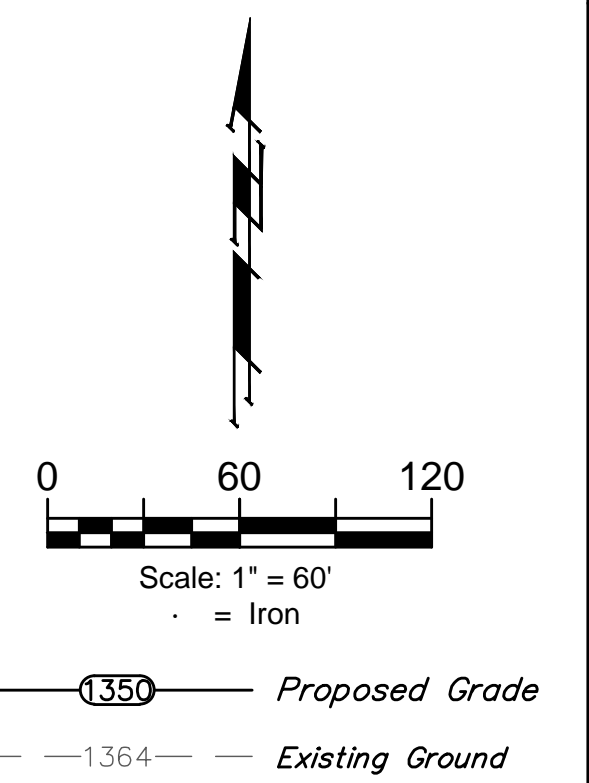
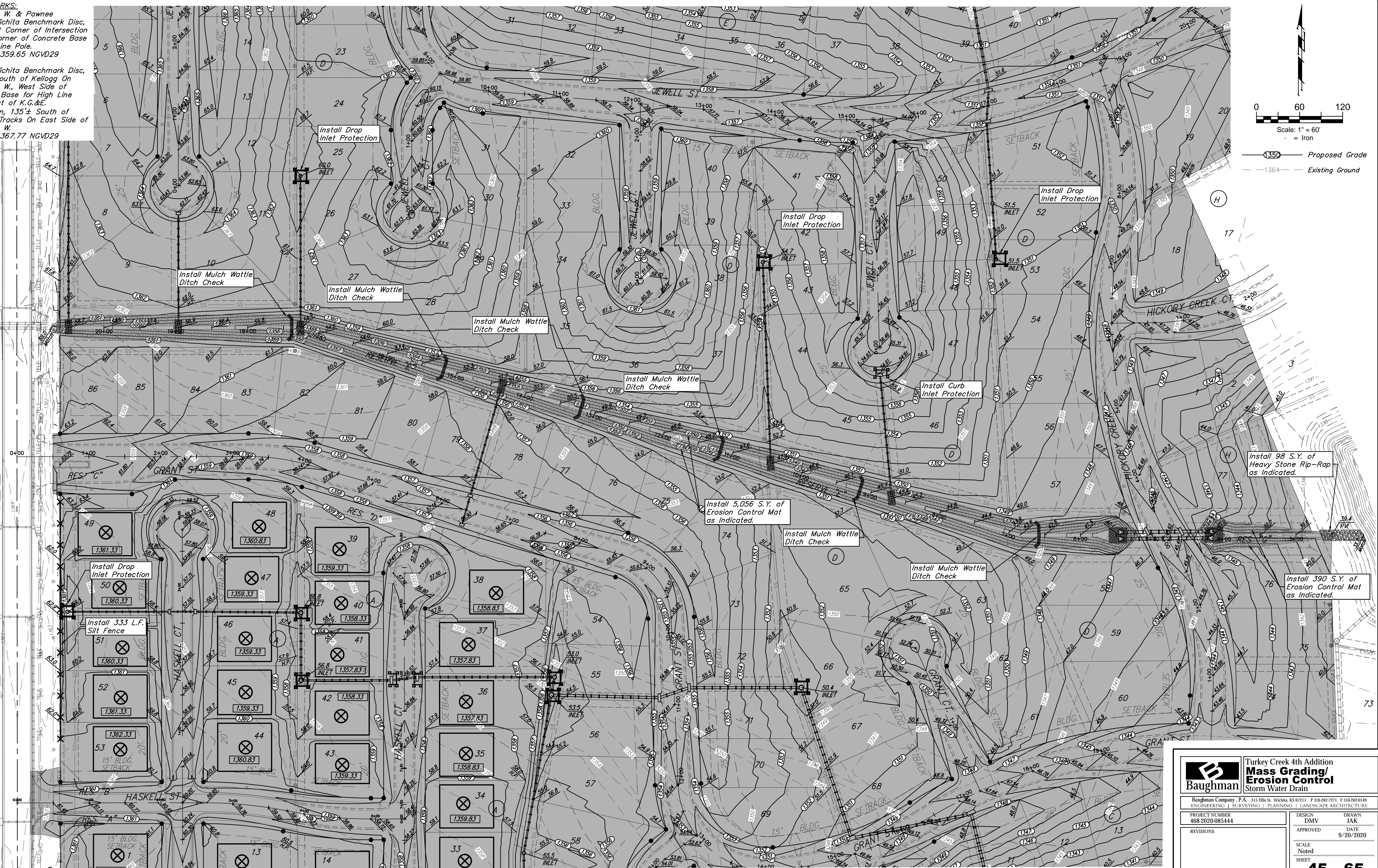


BENCHMARKS:
 135th St. W. & Pawnee
 City of Wichita Benchmark Disc,
 Northeast Corner of Intersection
 On SW Corner of Concrete Base
 of High Line Pole.
 Elev. = 1359.65 NGVD29

City of Wichita Benchmark Disc,
 0.4 Mi. South of Kelllogg On
 135th St. W., West Side of
 Concrete Base for High Line
 Pole, West of K.G.&C.
 Substation, 135± South of
 Railroad Tracks On East Side of
 135th St. W.
 Elev. = 1367.77 NGVD29

135TH STREET



Proposed Grade
 Existing Ground

Install 98 S.Y. of Heavy Stone Rip-Rap as Indicated.

Install 390 S.Y. of Erosion Control Mat as Indicated.

	Turkey Creek 4th Addition Mass Grading/ Erosion Control Storm Water Drain	
	<small>Baughman Company, P.A. 315 Ellis St. Wichita, KS 67211 P 316-262-7271 F 316-262-0149 ENGINEERING SURVEYING PLANNING LANDSCAPE ARCHITECTURE</small>	
PROJECT NUMBER 468-2020-085444	DESIGN DMV	DRAWN JAK
REVISIONS:	APPROVED Noted	DATE 9/20/2020
		SCALE Noted
		SHEET 45 OF 65

E:\Projects\Turkey Creek 4th_Engineering\Phase 1\SWD_2020\0457\SWD PLANS.dwg