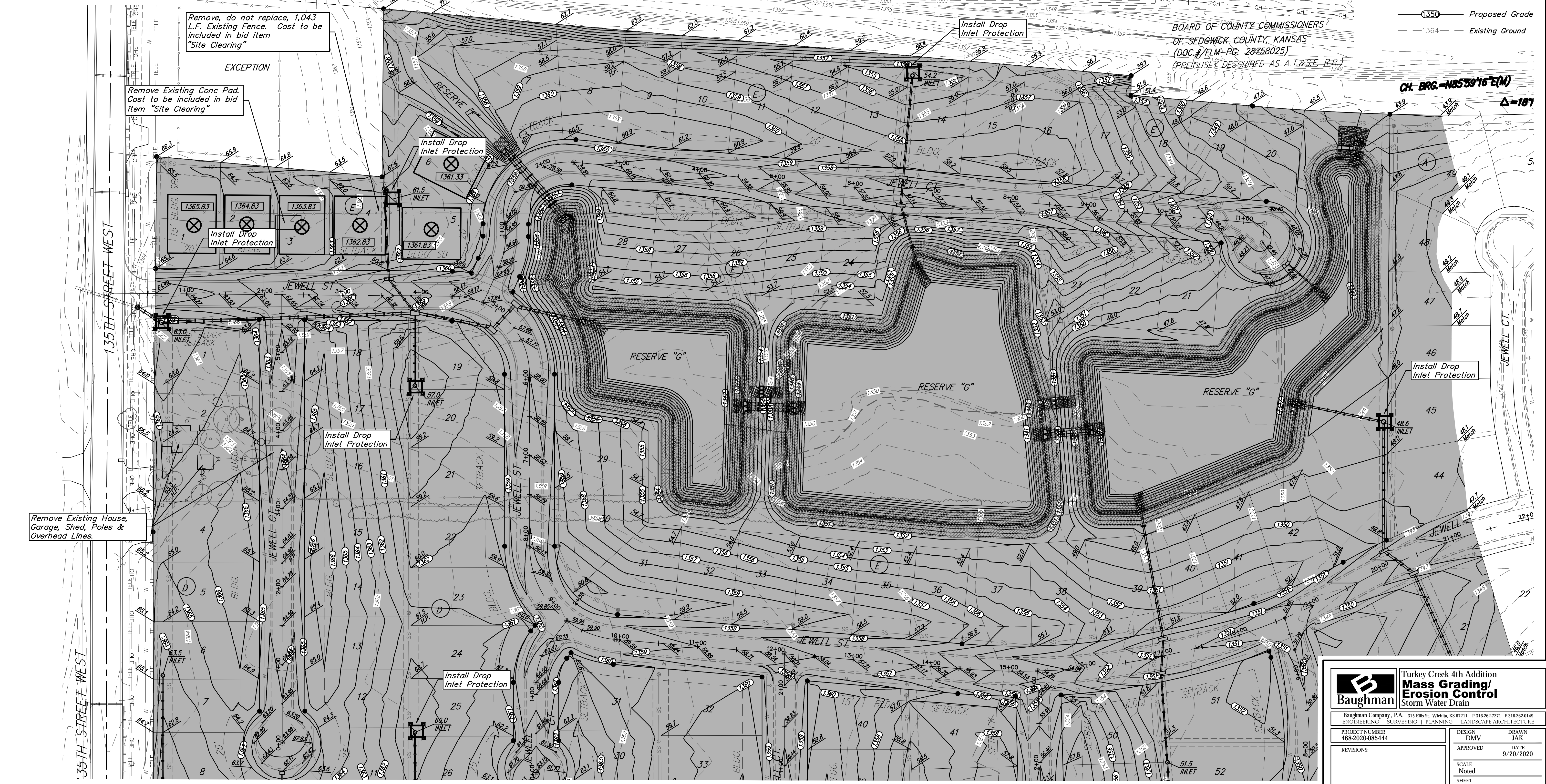
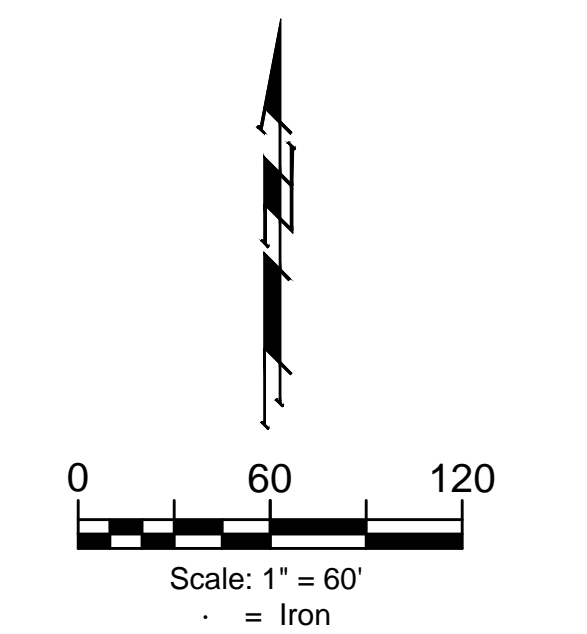


BENCHMARKS:
 135th St. W. & Pawnee
 City of Wichita Benchmark Disc,
 Northeast Corner of Intersection
 On SW Corner of Concrete Base
 of High Line Pole.
 Elev. = 1359.65 NGVD29

City of Wichita Benchmark Disc,
 0.4 Mi. South of Kellogg On
 135th St. W., West Side of
 Concrete Base for High Line
 Pole, West of K.G.&E.
 Substation, 135± South of
 Railroad Tracks On East Side of
 135th St. W.
 Elev. = 1367.77 NGVD29

- DEMOLITION NOTES:**
- The Contractor shall remove existing structures, fences, and all other miscellaneous items on this site as indicated on the plans. Removal of structures shall include all footings, foundations, stoops, steps, plumbing, and other utility service lines.
 - Basements under existing structures shall be filled and compacted at no extra cost to the project.
 - The Contractor shall remove all remnants of demolition and all other miscellaneous debris found on this site.
 - The Contractor shall dispose of the removed materials in a safe, legal, and responsible manner.
 - Existing utility service lines shall be abandoned as indicated on the plans by others prior to construction. Gas meters, utility pedestals, overhead lines, and utility poles remaining on this site shall be removed and disposed of by the Contractor (see note #3).
 - All costs of demolition and disposal of removed materials shall be included in "Site Clearing"



	Turkey Creek 4th Addition Mass Grading/ Erosion Control Storm Water Drain	
	<small>Baughman Company, P.A. 315 Ellis St. Wichita, KS 67211 F 316-262-7271 F 316-262-0149 ENGINEERING SURVEYING PLANNING LANDSCAPE ARCHITECTURE</small>	
<small>PROJECT NUMBER 468-2020-085444</small>	<small>DESIGN DMV</small>	<small>DRAWN JAK</small>
<small>REVISIONS:</small>	<small>APPROVED</small>	<small>DATE 9/20/2020</small>
		<small>SCALE Noted</small>
		<small>SHEET 46 OF 65</small>