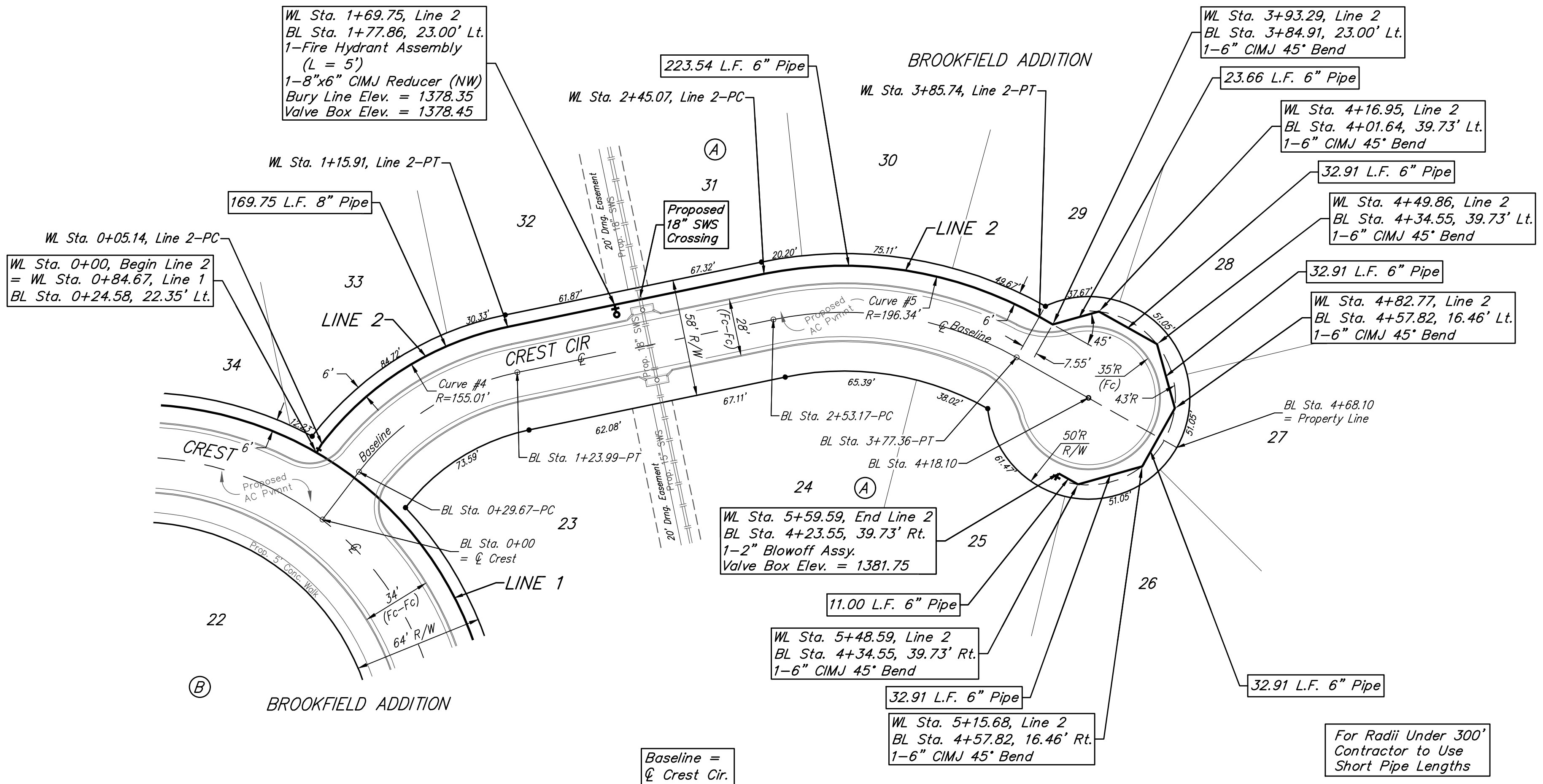


BENCHMARKS:
 RR spike in asphalt, SW COR., N1/2, SW1/4, Sec. 34, TWP. 26-S, R-2-E. Elev. = 1400.59 NAVD88
 RR spike in E. face of power pole, 174± N. of S. line, N1/2, SW1/4 & 49± E. of W. line, SW1/4, Sec. 34, TWP. 26-S, R-2-E. Elev. = 1398.64 NAVD88
 RR spike in S. face of power pole, 294± S. of N. line, SW1/4, & 48± E. of W. line, SW1/4, Sec. 34, TWP. 26-S, R-2-E. Elev. = 1386.14 NAVD88

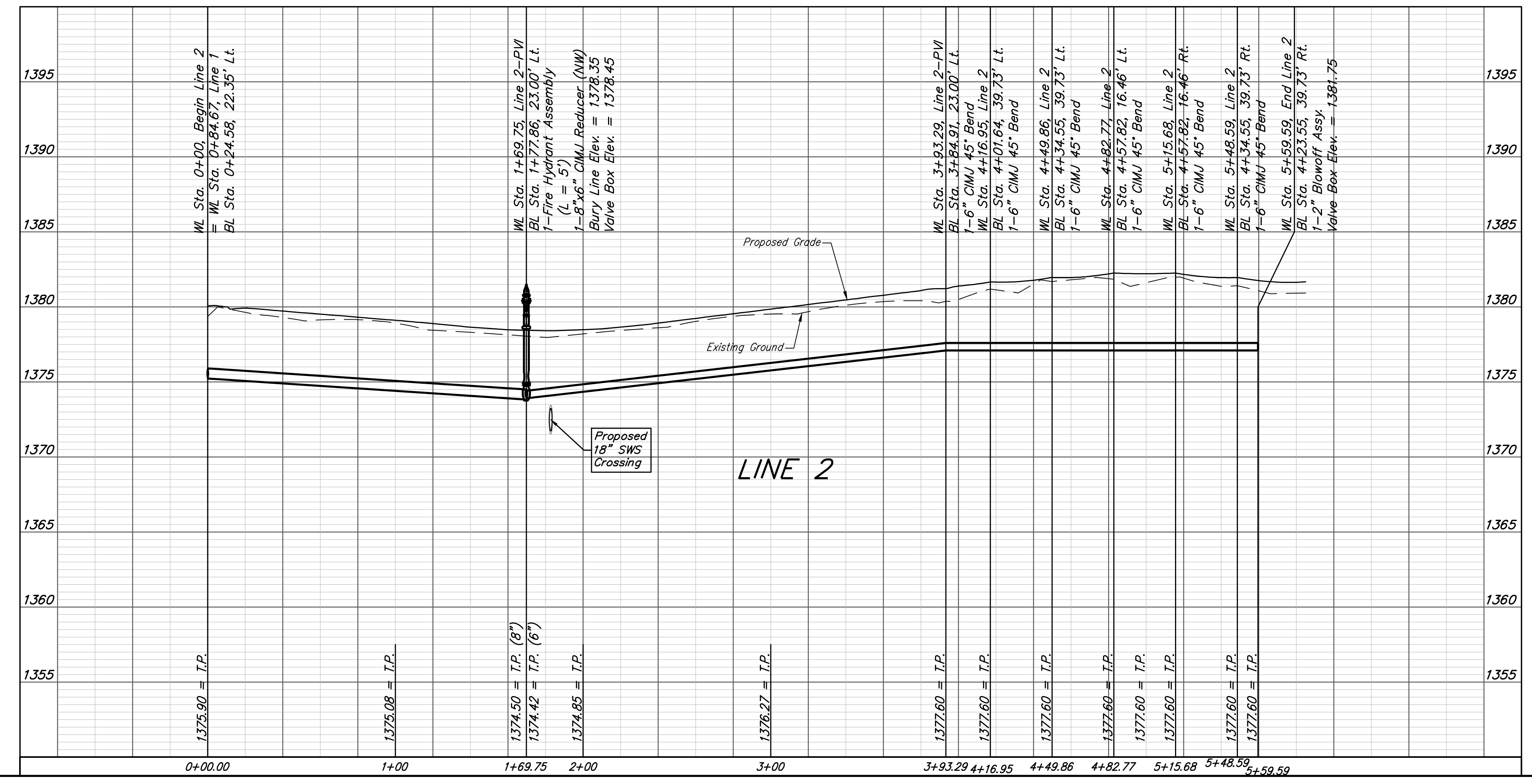
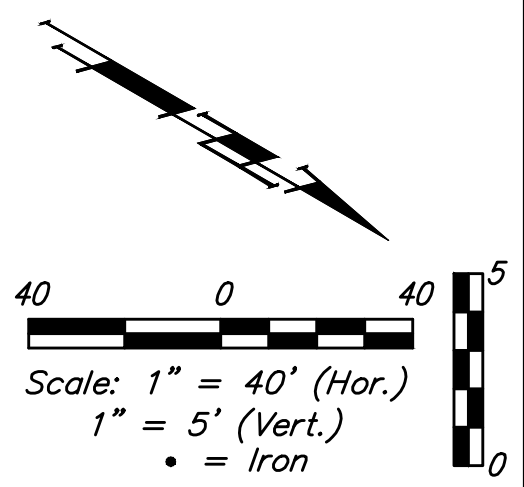


Curve #4
 Curve Data Based on Centerline
 Rad. = 155.01' Delta = 40°56'28" Tangent = 57.87'
 Arc = 164.61' L.C. = 108.42' Def./Ft. = 7.46147 Min.

Station	Arc	Chord 8' Left	Defl.	Total Defl.
0+05.14	-	-	0°00'00"	0°00'00"
0+25.00	19.86'	14.05'	2°28'11"	2°28'11"
0+50.00	25.00'	17.68'	3°06'32"	5°34'43"
0+75.00	25.00'	17.68'	3°06'33"	8°41'16"
1+00.00	25.00'	17.68'	3°06'32"	11°47'48"
1+25.00	25.00'	17.68'	3°06'32"	14°54'20"
1+50.00	25.00'	17.68'	3°06'32"	18°00'52"
1+69.75	19.75'	13.97'	2°27'22"	20°28'14"

Curve #5
 Curve Data Based on Centerline
 Rad. = 196.34' Delta = 41°03'19" Tangent = 73.52'
 Arc = 140.67' L.C. = 137.70' Def./Ft. = 8.75566 Min.

Station	Arc	Chord 8' Left	Defl.	Total Defl.
2+45.07	-	-	0°00'00"	0°00'00"
2+50.00	4.93'	5.13'	0°43'10"	0°43'10"
2+75.00	25.00'	26.00'	3°38'53"	4°22'03"
3+00.00	25.00'	26.00'	3°38'54"	8°00'57"
3+25.00	25.00'	26.00'	3°38'53"	11°39'50"
3+50.00	25.00'	26.00'	3°38'54"	15°18'44"
3+75.00	25.00'	26.00'	3°38'53"	18°57'37"
3+85.74	10.74'	11.18'	1°34'02"	20°31'39"



Baughman Brookfield Addition - Phase 2A
LINE 2
 Water Distribution System

Baughman Company, P.A. 315 Ellis St. Wichita, KS 67211 P 316-262-7271 F 316-262-0149
 ENGINEERING | SURVEYING | PLANNING | LANDSCAPE ARCHITECTURE

PROJECT NUMBER: 448-2020-18386
 DESIGN: AEG
 DRAWN: JAK
 APPROVED: [Signature]
 DATE: Oct. 5, 2020

REVISIONS:

SCALE: Noted
 SHEET: **5 OF 16**

C:\Projects\Brookfield Addition_1604\PI90\Engineering\Phase 2A\WTR_2020-E593\WTR PLANS.dwg