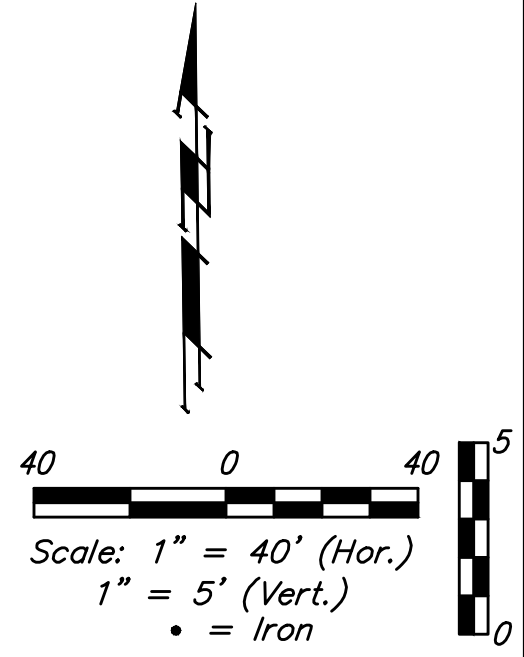
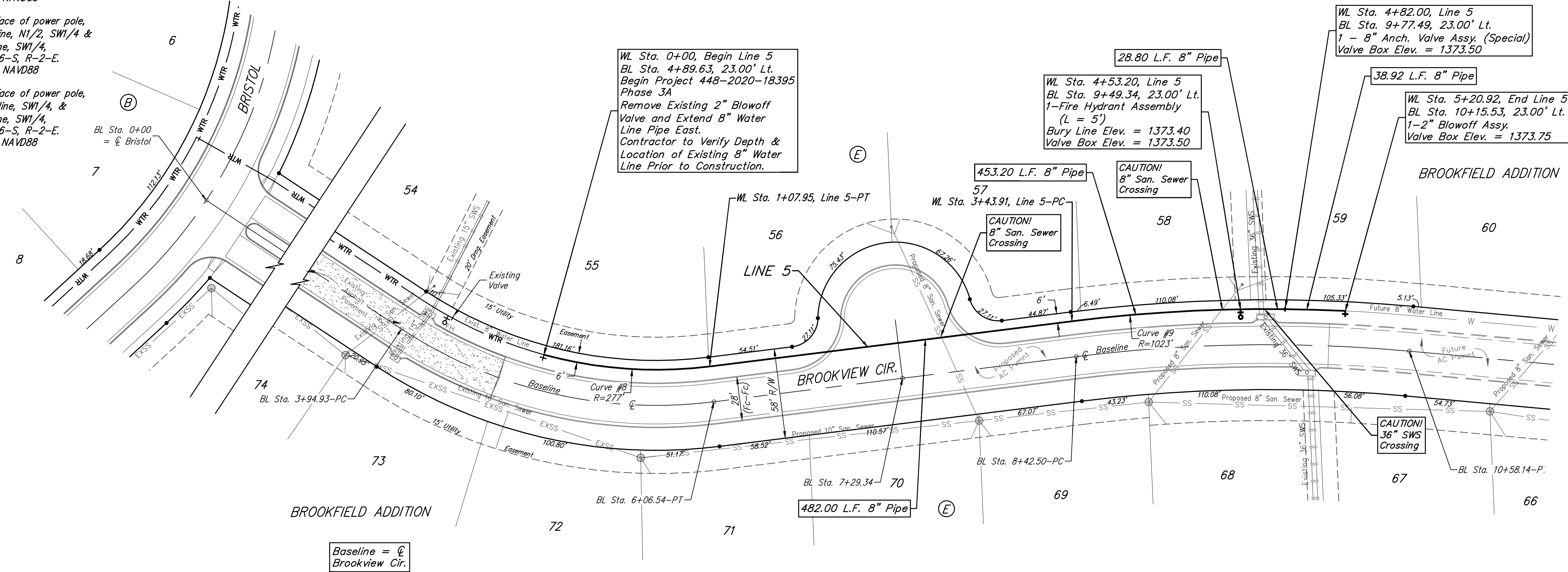


BENCHMARKS:
 RR spike in asphalt, SW COR., N1/2, SW1/4, Sec. 34, TWP. 26-S, R-2-E. Elev. = 1400.59 NAVD88

RR spike in E. face of power pole, 174± N. of S. line, N1/2, SW1/4 & 49± E. of W. line, SW1/4, Sec. 34, TWP. 26-S, R-2-E. Elev. = 1398.64 NAVD88

RR spike in S. face of power pole, 294± S. of N. line, SW1/4, & 48± E. of W. line, SW1/4, Sec. 34, TWP. 26-S, R-2-E. Elev. = 1386.14 NAVD88



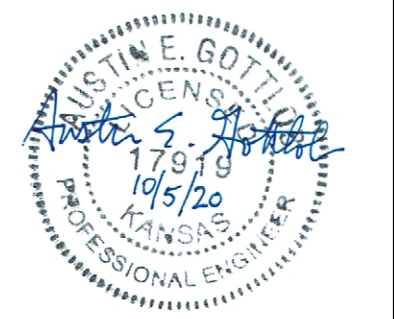
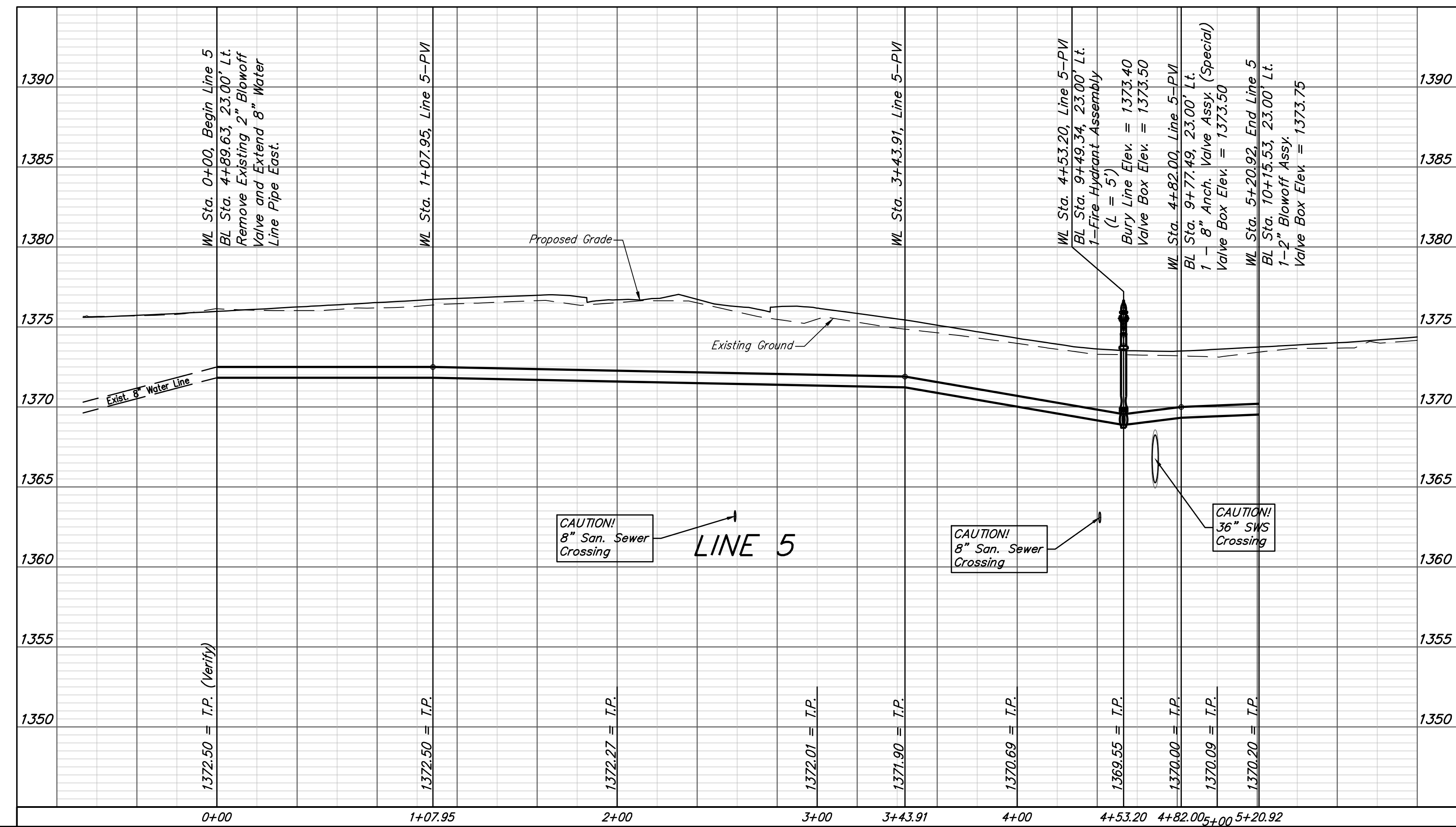
Curve #8
 Curve Data Based on Centerline
 Rad. = 277' Delta = 22°19'44" Tangent = 54.67'
 Arc = 107.95' L.C. = 107.27' Def./Ft. = 6.20534 Min.

Station	Arc	Chord 8' Left	Defl.	Total Defl.
0+00.00	-	-	0°00'00"	0°00'00"
0+25.00	25.00'	24.27'	2°35'08"	2°35'08"
0+50.00	25.00'	24.27'	2°35'08"	5°10'16"
0+75.00	25.00'	24.27'	2°35'08"	7°45'24"
1+00.00	25.00'	24.27'	2°35'08"	10°20'32"
1+07.95	7.95'	7.72'	0°49'20"	11°09'52"

Curve #9
 Curve Data Based on Centerline
 Rad. = 1023' Delta = 9°54'51" Tangent = 88.73'
 Arc = 177.01' L.C. = 176.79' Def./Ft. = 1.68027 Min.

Station	Arc	Chord 8' Left	Defl.	Total Defl.
3+43.91	-	-	0°00'00"	0°00'00"
3+50.00	6.09'	6.14'	0°10'14"	0°10'14"
3+75.00	25.00'	25.20'	0°42'00"	0°52'14"
4+00.00	25.00'	25.20'	0°42'01"	1°34'15"
4+25.00	25.00'	25.20'	0°42'00"	2°16'15"
4+50.00	25.00'	25.20'	0°42'01"	2°58'16"
4+75.00	25.00'	25.20'	0°42'00"	3°40'16"
5+00.00	25.00'	25.20'	0°42'00"	4°22'16"
5+20.92	20.92'	21.08'	0°35'09"	4°57'25"

Baseline = ϕ
 Brookview Cir.



Baughman Brookfield Addition - Phase 3A
LINE 5
 Water Distribution System

Baughman Company, P.A. 315 Ellis St. Wichita, KS 67211 P 316-262-7271 F 316-262-0149
 ENGINEERING | SURVEYING | PLANNING | LANDSCAPE ARCHITECTURE

PROJECT NUMBER: 448-2020-18395 DESIGN: AEG DRAWN: JAK
 APPROVED: DATE: Oct. 5, 2020
 REVISIONS: SCALE: Noted SHEET: 7 OF 16

C:\Projects\Brookfield Addition_1604\190\Engineering\Phase 2A\WTR_2020-E593\WTR PLANS.dwg