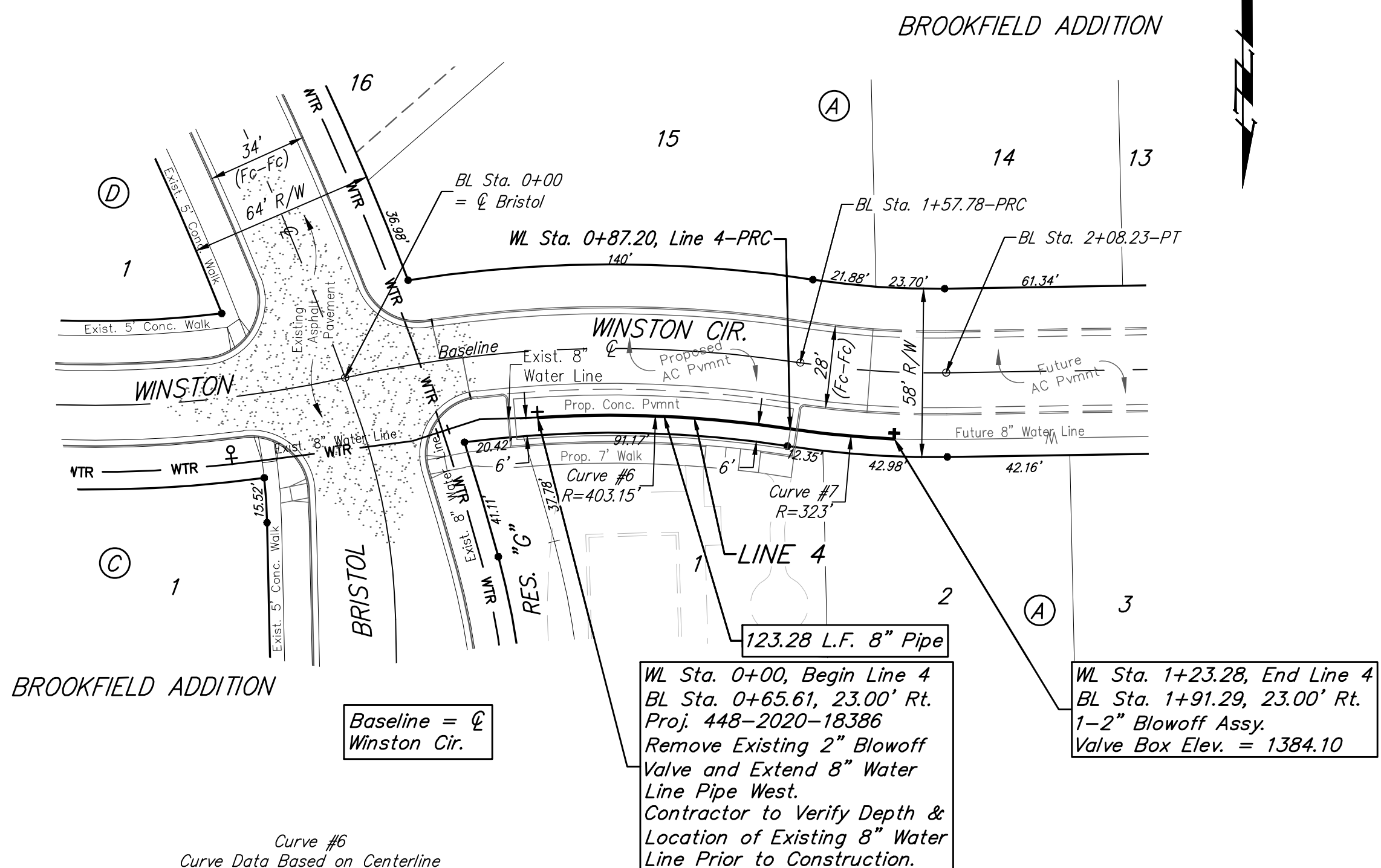
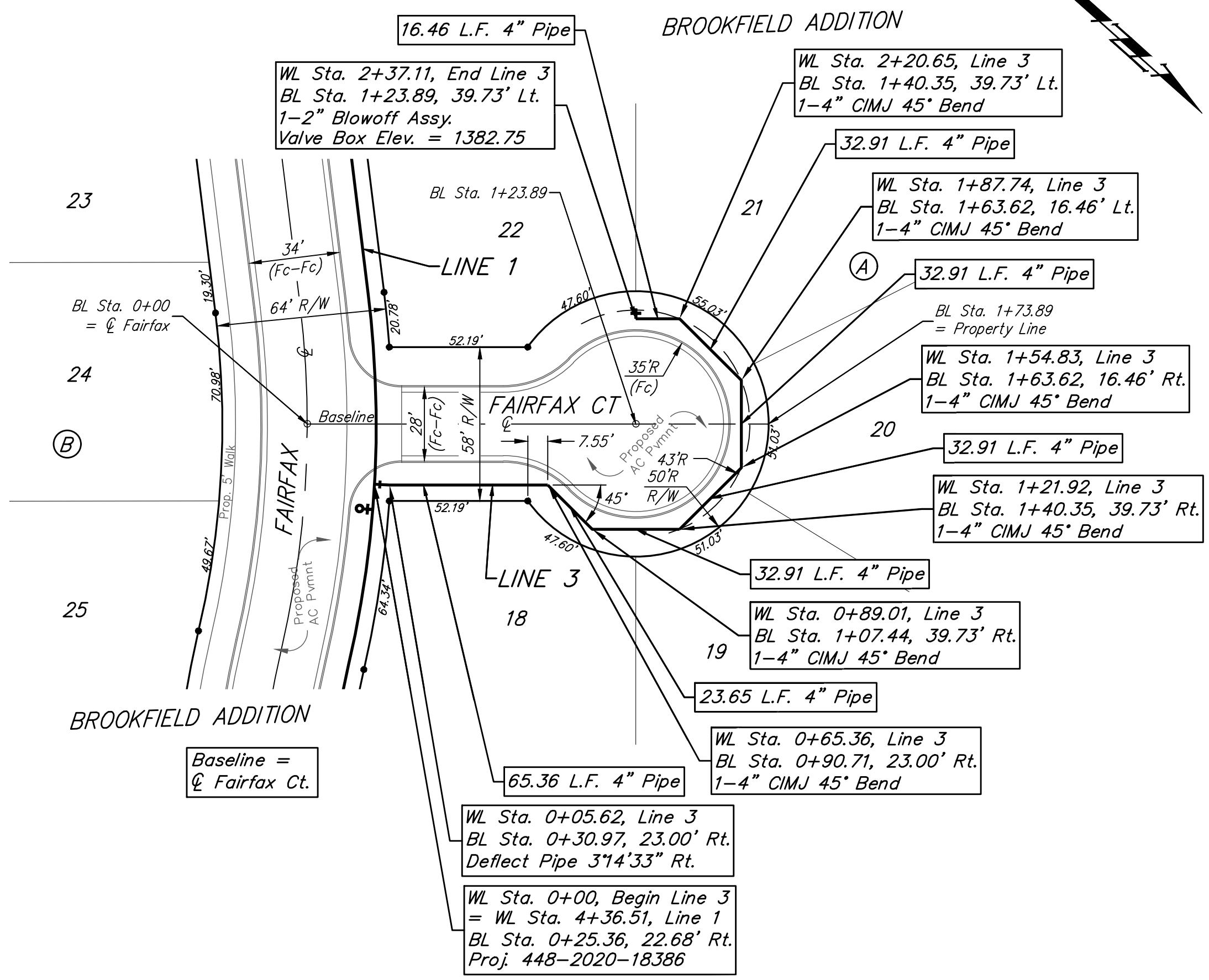


BENCHMARKS:
 RR spike in asphalt, SW COR., N1/2, SW1/4, Sec. 34, TWP. 26-S, R-2-E. Elev. = 1400.59 NAVD88
 RR spike in E. face of power pole, 174± N. of S. line, N1/2, SW1/4 & 49± E. of W. line, SW1/4, Sec. 34, TWP. 26-S, R-2-E. Elev. = 1398.64 NAVD88
 RR spike in S. face of power pole, 294± S. of N. line, SW1/4, & 48± E. of W. line, SW1/4, Sec. 34, TWP. 26-S, R-2-E. Elev. = 1386.14 NAVD88

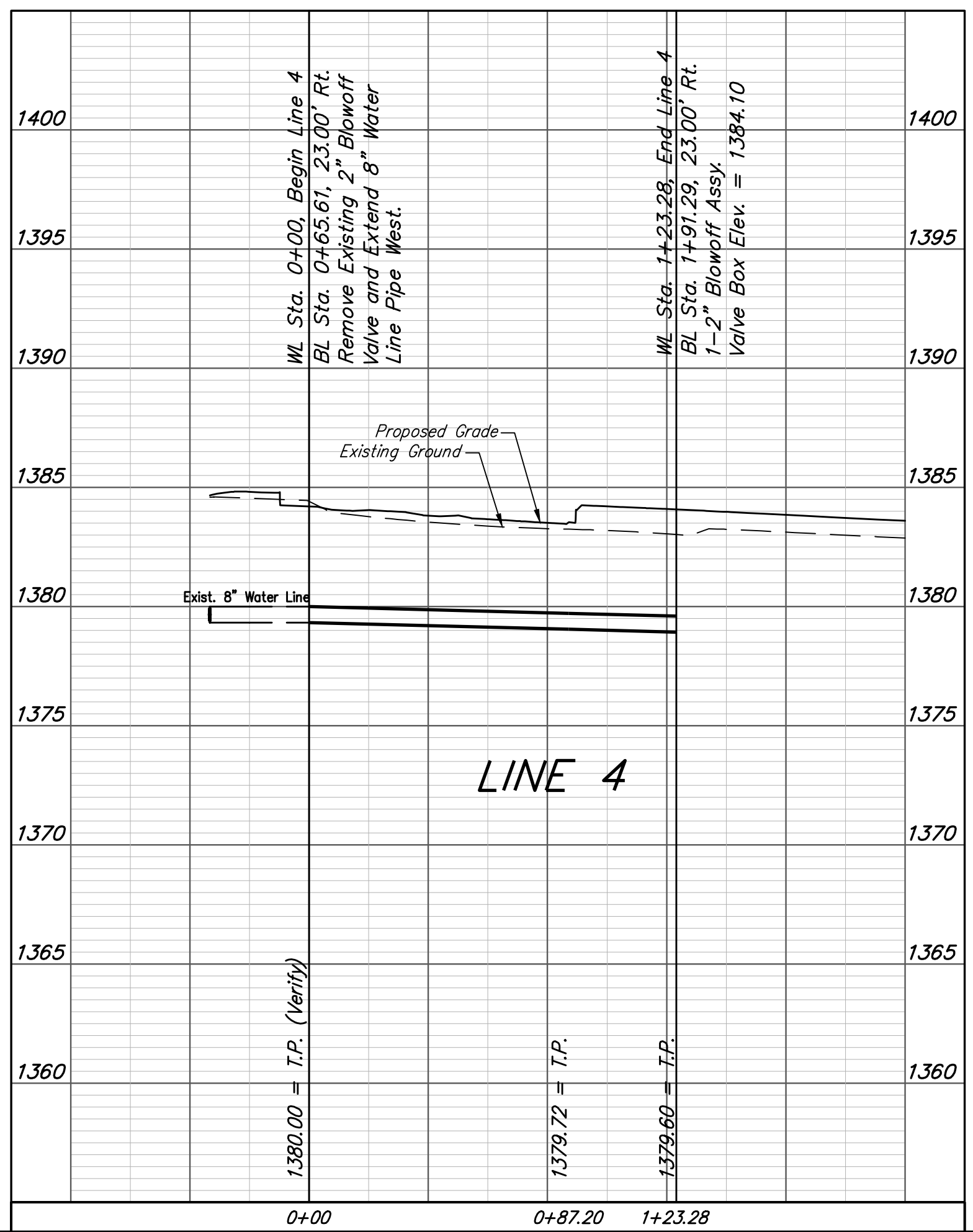
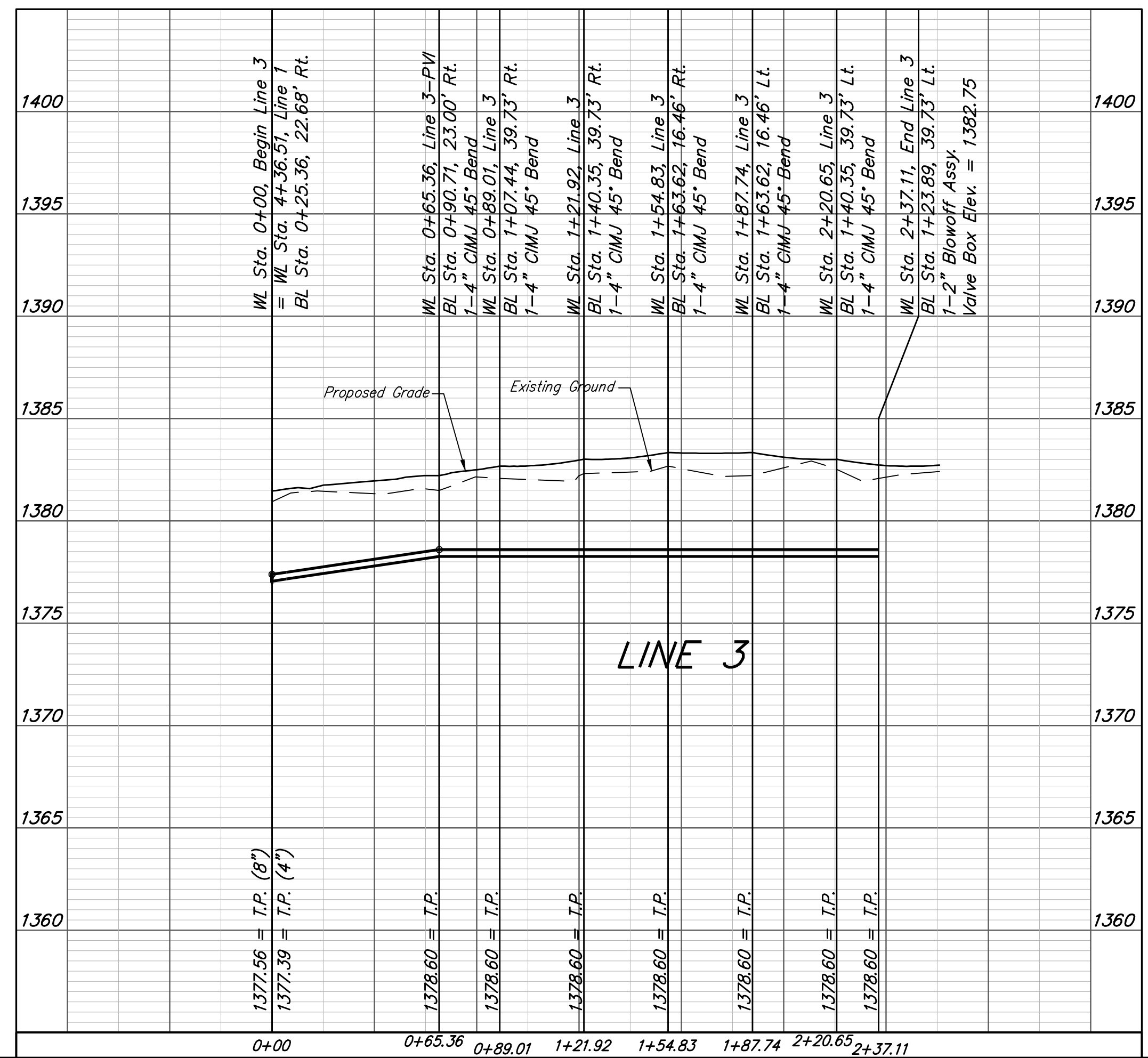


Curve #6
 Curve Data Based on Centerline
 Rad. = 403.15' Delta = 12°23'34" Tangent = 43.77'
 Arc = 87.20' L.C. = 87.03' Def./Ft. = 4.26357 Min.

Station	Arc	Chord 8' Right	Defl.	Total Defl.
0+00.00	-	-	0'00'00"	0'00'00"
0+25.00	25.00'	24.50'	1'46'35"	1'46'35"
0+50.00	25.00'	24.50'	1'46'36"	3'33'11"
0+75.00	25.00'	24.50'	1'46'35"	5'19'46"
0+87.20	12.20'	11.96'	0'52'01"	6'11'47"

Curve #7
 Curve Data Based on Centerline
 Rad. = 323' Delta = 6°23'59" Tangent = 18.06'
 Arc = 36.08' L.C. = 36.06' Def./Ft. = 5.32128 Min.

Station	Arc	Chord 8' Right	Defl.	Total Defl.
0+87.20	-	-	0'00'00"	0'00'00"
1+00.00	12.80'	13.12'	1'08'07"	1'08'07"
1+23.28	23.28'	23.85'	2'03'53"	3'12'00"



Baughman Brookfield Addition - Phase 2A
LINE 3 & LINE 4
 Water Distribution System

PROJECT NUMBER: 448-2020-18386
 DESIGN: AEG
 DRAWN: JAK
 APPROVED: [Signature]
 DATE: Oct. 5, 2020
 SCALE: Noted
 SHEET: 6 OF 16

