

BENCHMARKS:
 CHISELED "□", TOP OF CURB INLET, NW COR.
 OF CURB INLET, 77.8' W. & 16.1' N. OF NW
 COR., E1/2, NW1/4, SEC. 34, TWP. 27-S,
 R-2-E.
 ELEV. = 1332.09 NAVD88

CHISELED "□", TOP OF CURB INLET, NW COR.
 OF CURB INLET, 272.1' E. & 16.1' N. OF NW
 COR., E1/2, NW1/4, SEC. 34, TWP. 27-S,
 R-2-E.
 ELEV. = 1329.53 NAVD88

WILLOW CREEK EAST 4TH ADDITION

IRONS			
Point #	Northing	Easting	Description
101	1,678,272.97	1,687,941.56	IRON
102	1,678,274.37	1,687,667.14	IRON
103	1,677,948.11	1,687,665.57	IRON
104	1,677,642.46	1,687,664.11	IRON
105	1,678,271.88	1,688,153.04	IRON
106	1,678,272.80	1,687,973.56	IRON
107	1,678,264.13	1,687,941.52	IRON
108	1,678,263.96	1,687,973.52	IRON
109	1,678,191.10	1,687,898.26	IRON
110	1,678,163.12	1,687,913.79	IRON
111	1,678,019.42	1,687,753.38	IRON
112	1,678,008.82	1,687,783.58	IRON
113	1,677,990.49	1,687,740.33	IRON
114	1,677,982.18	1,687,716.57	IRON
115	1,677,942.88	1,687,746.38	IRON
116	1,677,924.39	1,687,731.12	IRON
117	1,678,350.85	1,687,589.71	IRON
118	1,678,349.04	1,687,939.60	IRON

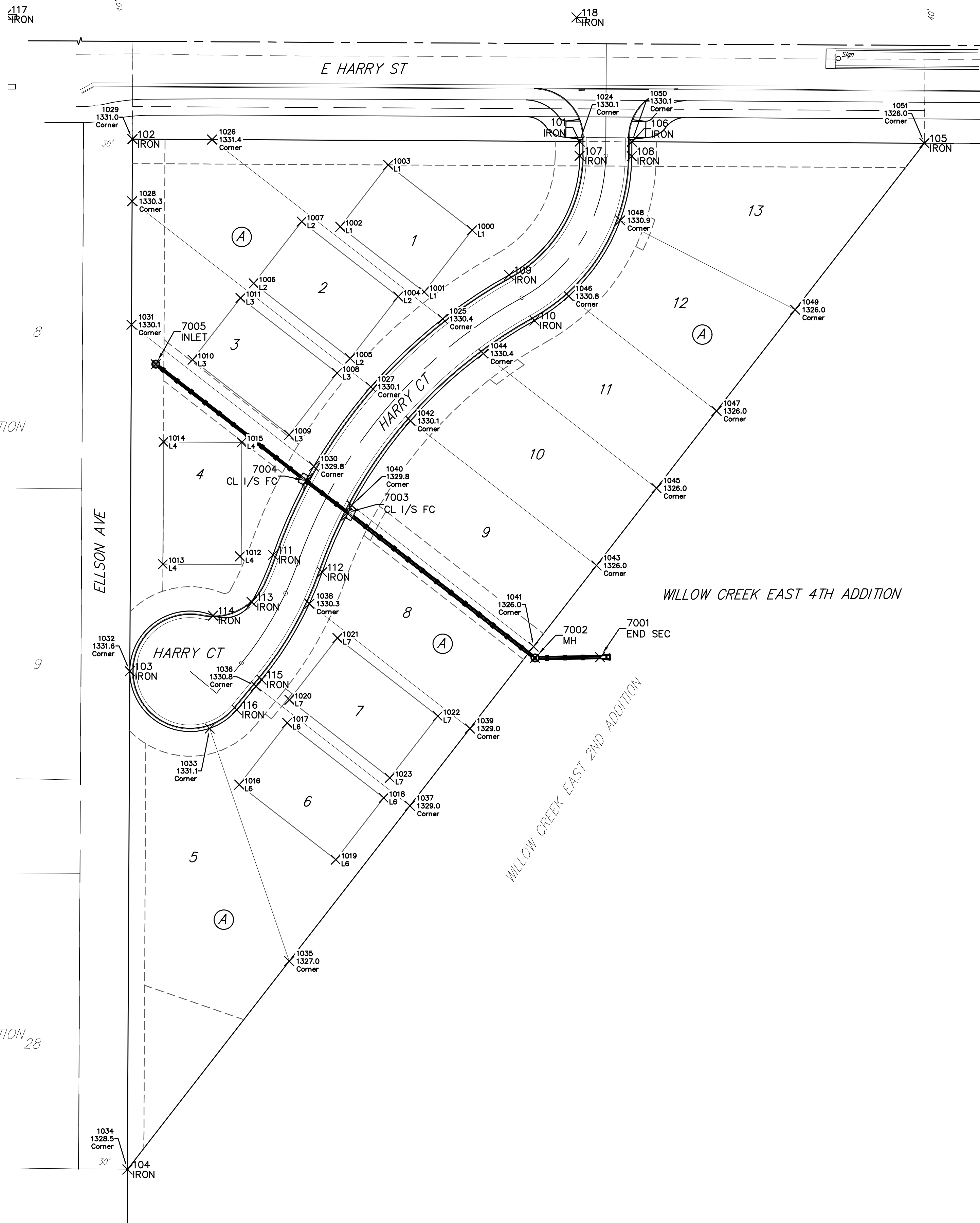
SWS POINTS			
Point #	Northing	Easting	Description
7001	1,677,956.67	1,687,954.03	END SEC
7002	1,677,956.15	1,687,914.11	MH
7003	1,678,045.22	1,687,798.79	CL 1/5 FC
7004	1,678,064.85	1,687,774.10	CL 1/5 FC
7005	1,678,136.35	1,687,681.48	INLET

BL Sta. 1+36.1

BL Sta. 1+41.9


SLOAN'S ADDITION

SLOAN'S ADDITION₂₈



MASS GRADING				
Point #	Northing	Easting	Description	Elevation
1000	1,678,218.57	1,687,875.58	L1	
1001	1,678,180.66	1,687,846.13	L1	
1002	1,678,220.66	1,687,794.64	L1	
1003	1,678,268.57	1,687,824.09	L1	
1004	1,678,177.82	1,687,830.24	L2	
1005	1,678,139.91	1,687,800.79	L2	
1006	1,678,185.92	1,687,741.56	L2	
1007	1,678,223.82	1,687,771.01	L2	
1008	1,678,130.95	1,687,792.76	L3	
1009	1,678,083.05	1,687,763.31	L3	
1010	1,678,139.06	1,687,704.08	L3	
1011	1,678,176.96	1,687,733.53	L3	
1012	1,678,018.55	1,687,733.13	L4	
1013	1,678,013.72	1,687,685.89	L4	
1014	1,678,088.72	1,687,686.25	L4	
1015	1,678,088.49	1,687,734.25	L4	
1016	1,677,878.48	1,687,732.68	L6	
1017	1,677,916.39	1,687,762.13	L6	
1018	1,677,870.38	1,687,821.36	L6	
1019	1,677,832.48	1,687,791.91	L6	
1020	1,677,930.52	1,687,763.50	L7	
1021	1,677,968.43	1,687,792.95	L7	
1022	1,677,920.58	1,687,854.54	L7	
1023	1,677,882.67	1,687,825.10	L7	
1024	1,678,272.97	1,687,941.56	Corner	1330.1
1025	1,678,164.20	1,687,857.54	Corner	1330.4
1026	1,678,274.12	1,687,716.04	Corner	1331.4
1027	1,678,122.50	1,687,813.42	Corner	1330.1
1028	1,678,236.27	1,687,666.96	Corner	1330.3
1029	1,678,274.37	1,687,667.14	Corner	1331.0
1030	1,678,073.70	1,687,778.43	Corner	1329.8
1031	1,678,160.58	1,687,666.60	Corner	1330.1
1032	1,677,948.11	1,687,665.57	Corner	1331.6
1033	1,677,912.93	1,687,714.55	Corner	1331.1
1034	1,677,642.46	1,687,664.11	Corner	1328.5
1035	1,677,770.26	1,687,763.38	Corner	1327.0
1036	1,677,838.82	1,687,743.03	Corner	1330.8
1037	1,677,865.53	1,687,837.38	Corner	1329.0
1038	1,677,989.42	1,687,775.70	Corner	1330.3
1039	1,677,912.91	1,687,874.19	Corner	1328.0

MASS GRADING				
Point #	Northing	Easting	Description	Elevation
1040	1,678,049.79	1,687,801.70	Corner	1329.8
1041	1,677,963.16	1,687,913.23	Corner	1326.0
1042	1,678,101.62	1,687,837.68	Corner	1330.1
1043	1,678,012.92	1,687,951.87	Corner	1326.0
1044	1,678,142.88	1,687,882.37	Corner	1330.4
1045	1,678,060.30	1,687,988.68	Corner	1326.0
1046	1,678,178.09	1,687,934.85	Corner	1330.8
1047	1,678,107.68	1,688,025.49	Corner	1326.0
1048	1,678,224.61	1,687,966.42	Corner	1330.9
1049	1,678,169.76	1,688,073.71	Corner	1326.0
1050	1,678,272.80	1,687,973.56	Corner	1330.1
1051	1,678,271.88	1,688,153.04	Corner	1326.0



Baughman

Willow Creek East 4th Addition

COORDINATES

Stormwater Drain Improvements

Baughman Company, P.A. 315 Ellis St. Wichita, KS 67211 P 316-262-7271 F 316-262-0149
 ENGINEERING | SURVEYING | PLANNING | LANDSCAPE ARCHITECTURE

PROJECT NUMBER 472-2020-085611	DESIGN AEG	DRAWN HJW
APPROVED	DATE 10/05/20	
REVISIONS:		SCALE Noted
		SHEET 24 OF 25