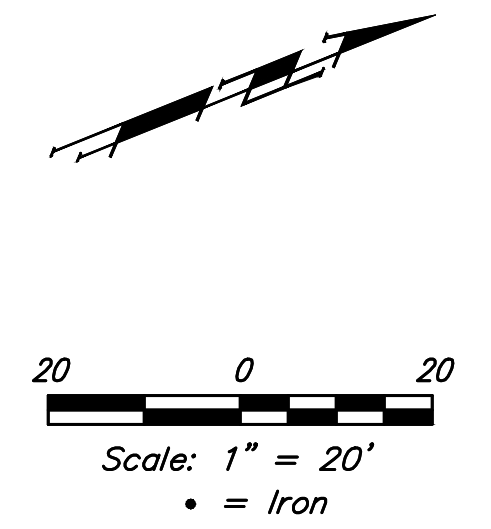
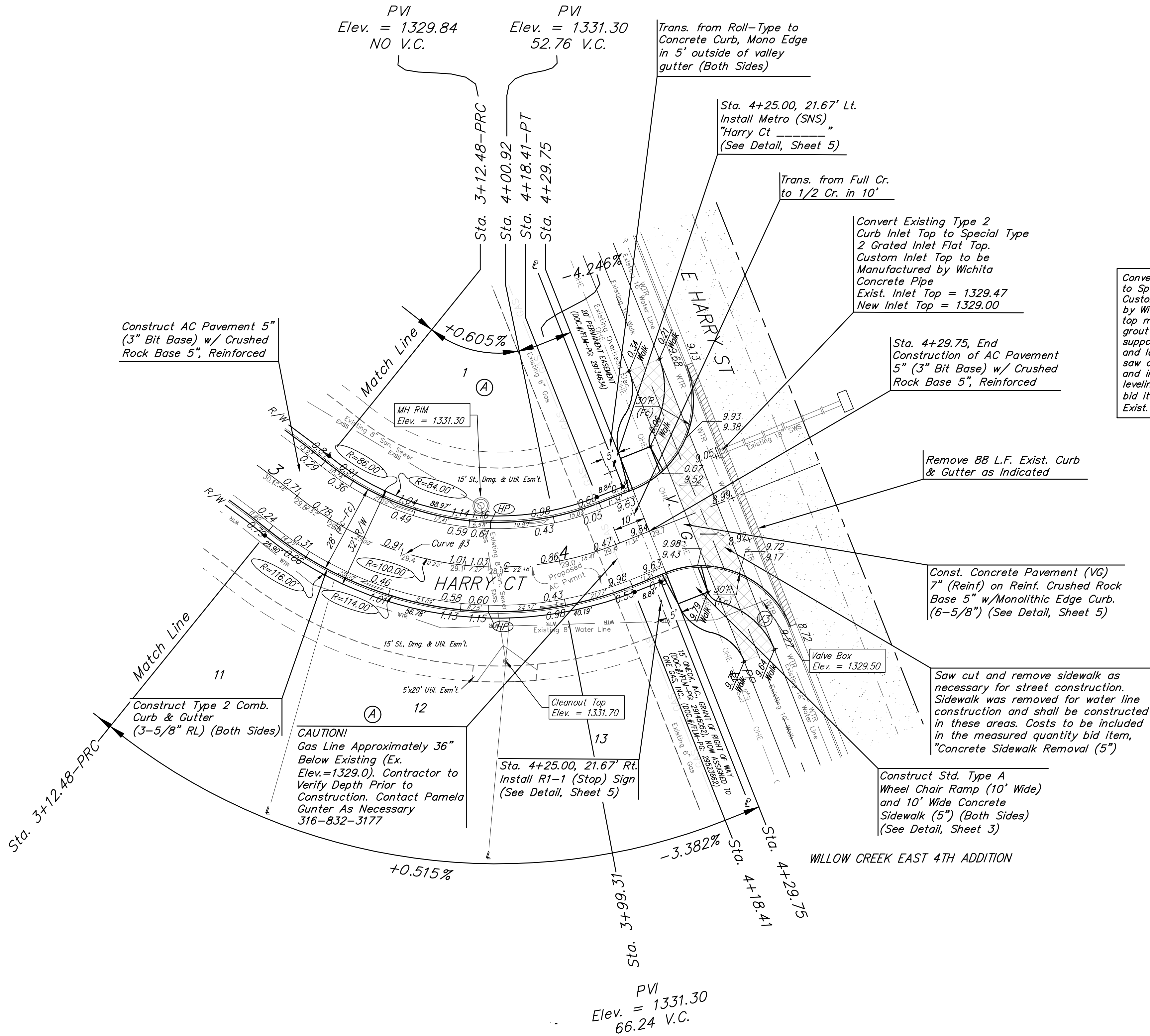


BENCHMARKS:
 CHISELED "□", TOP OF CURB INLET, NW COR.
 OF CURB INLET, 77.8' W. & 16.1' N. OF NW
 COR., E1/2, NW1/4, SEC. 34, TWP. 27-S,
 R-2-E.
 ELEV. = 1332.09 NAVD88

CHISELED "□", TOP OF CURB INLET, NW COR.
 OF CURB INLET, 272.1' E. & 16.1' N. OF NW
 COR., E1/2, NW1/4, SEC. 34, TWP. 27-S,
 R-2-E.
 ELEV. = 1329.53 NAVD88



WILLOW CREEK EAST 4TH ADDITION



Convert Existing Type 2 Curb Inlet Top to Special Type 2 Grated Inlet Flat Top. Custom Inlet Top to be Manufactured by Wichita Concrete Pipe. Exist. Inlet Top = 1329.47 New Inlet Top = 1329.00

Sta. 4+29.75, End Construction of AC Pavement 5" (3" Bit Base) w/ Crushed Rock Base 5", Reinforced

Remove 88 L.F. Exist. Curb & Gutter as Indicated

Const. Concrete Pavement (VG) 7" (Reinf) on Reinf. Crushed Rock Base 5" w/ Monolithic Edge Curb. (6-5/8") (See Detail, Sheet 5)

Saw cut and remove sidewalk as necessary for street construction. Sidewalk was removed for water line construction and shall be constructed in these areas. Costs to be included in the measured quantity bid item, "Concrete Sidewalk Removal (5")

Construct Std. Type A Wheel Chair Ramp (10' Wide) and 10" Wide Concrete Sidewalk (5") (Both Sides) (See Detail, Sheet 3)

Roll type curb & gutter to be constructed on the pavement on this sheet. Top of curb elevation are given for full height curb.

Curve #2

Curve Data Based on Centerline

Rad. = 300' Delta = 41°38'33" Tangent = 114.09'

Arc = 218.03' L.C. = 213.27' Def./Ft. = 5.72983 Min.

Face Chord Lengths

Station	Arc	Face Chord Lengths		Defl.	Total Defl.
		8' Left	8' Right		
0+94.45	-	-	-	0'00'00"	0'00'00"
1+00.00	5.55'	5.96'	5.14'	0'31'48"	0'31'48"
1+25.00	25.00'	26.83'	23.16'	2'23'15"	2'55'03"
1+50.00	25.00'	26.83'	23.16'	2'23'15"	5'18'18"
1+75.00	25.00'	26.83'	23.16'	2'23'14"	7'41'32"
2+00.00	25.00'	26.83'	23.16'	2'23'15"	10'04'47"
2+25.00	25.00'	26.83'	23.16'	2'23'15"	12'28'02"
2+50.00	25.00'	26.83'	23.16'	2'23'15"	14'51'17"
2+75.00	25.00'	26.83'	23.16'	2'23'14"	17'14'31"
3+00.00	25.00'	26.83'	23.16'	2'23'15"	19'37'46"
3+12.48	12.48'	13.39'	11.56'	1'11'30"	20'49'16"

Curve #3

Curve Data Based on Centerline

Rad. = 100' Delta = 60°41'17" Tangent = 58.54'

Arc = 105.93' L.C. = 101.04' Def./Ft. = 17.18721 Min.

Face Chord Lengths

Station	Arc	Face Chord Lengths		Defl.	Total Defl.
		8' Left	8' Right		
3+12.48	-	-	-	0'00'00"	0'00'00"
3+25.00	12.52'	9.76'	15.26'	3'35'11"	3'35'11"
3+50.00	25.00'	19.45'	30.42'	7'09'41"	10'44'52"
3+75.00	25.00'	19.45'	30.42'	7'09'41"	17'54'33"
4+00.00	25.00'	19.45'	30.42'	7'09'41"	25'04'14"
4+18.41	18.41'	14.34'	22.43'	5'16'25"	30'20'39"

	Willow Creek East 4th Addition	
	HARRY CT Sta. 3+12.48 to Sta. 4+59.77	
Baughman Company, P.A. 315 Ellis St. Wichita, KS 67211 P 316-262-7271 F 316-262-0149 ENGINEERING SURVEYING PLANNING LANDSCAPE ARCHITECTURE		
PROJECT NUMBER 472-2020-085611	DESIGN AEG	DRAWN HW
REVISIONS:	APPROVED	DATE 10/05/20
SCALE Noted		SHEET 8 OF 25