

BENCHMARKS:
 CHISELED "□", TOP OF CURB INLET, NW COR. OF CURB INLET, 77.8' W. & 16.1' N. OF NW COR., E1/2, NW1/4, SEC. 34, TWP. 27-S, R-2-E.
 ELEV. = 1332.09 NAVD88

CHISELED "□", TOP OF CURB INLET, NW COR. OF CURB INLET, 272.1' E. & 16.1' N. OF NW COR., E1/2, NW1/4, SEC. 34, TWP. 27-S, R-2-E.
 ELEV. = 1329.53 NAVD88

Sta. 0+00.0, Line 1
 Begin Construction of 18" RCP w/ End Section and 35.8 S.Y. of Light Stone Rip-Rap as Indicated. Contractor to Restrain End Section and Two Last Sections of Pipe per City Specs.

Sta. 0+39.9, Line 1
 Const. Std. Manhole
 Top Elev. = 1326.00

Sta. 1+83.5, Line 1
 Const. Std. Type 1-A Curb Inlet (5' x 3')
 Top Elev. = 1329.96

Sta. 2+19.3, Line 1
 Const. Std. Type 1-A Curb Inlet (5' x 3')
 Top Elev. = 1329.98

Sta. 3+34.2, End Line 1
 Const. Backyard Inlet
 Top Elev. = 1326.00

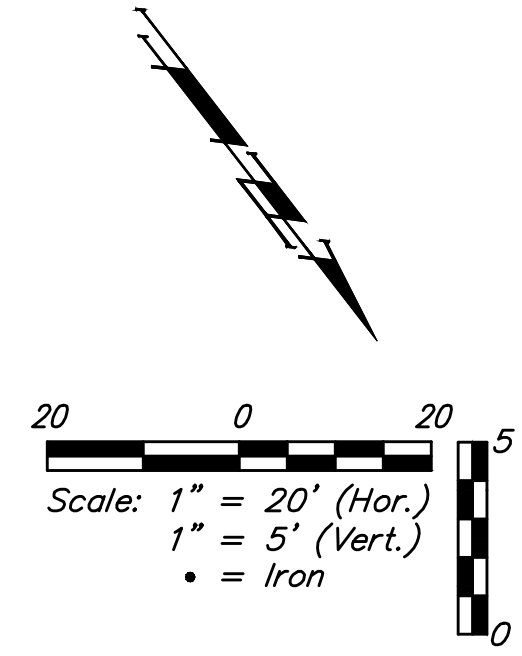
WILLOW CREEK EAST 2ND ADDITION
 RES. "A"
 FLOODWAY RESERVE

UNNAMED TRIBUTARY TO SPRING BRANCH

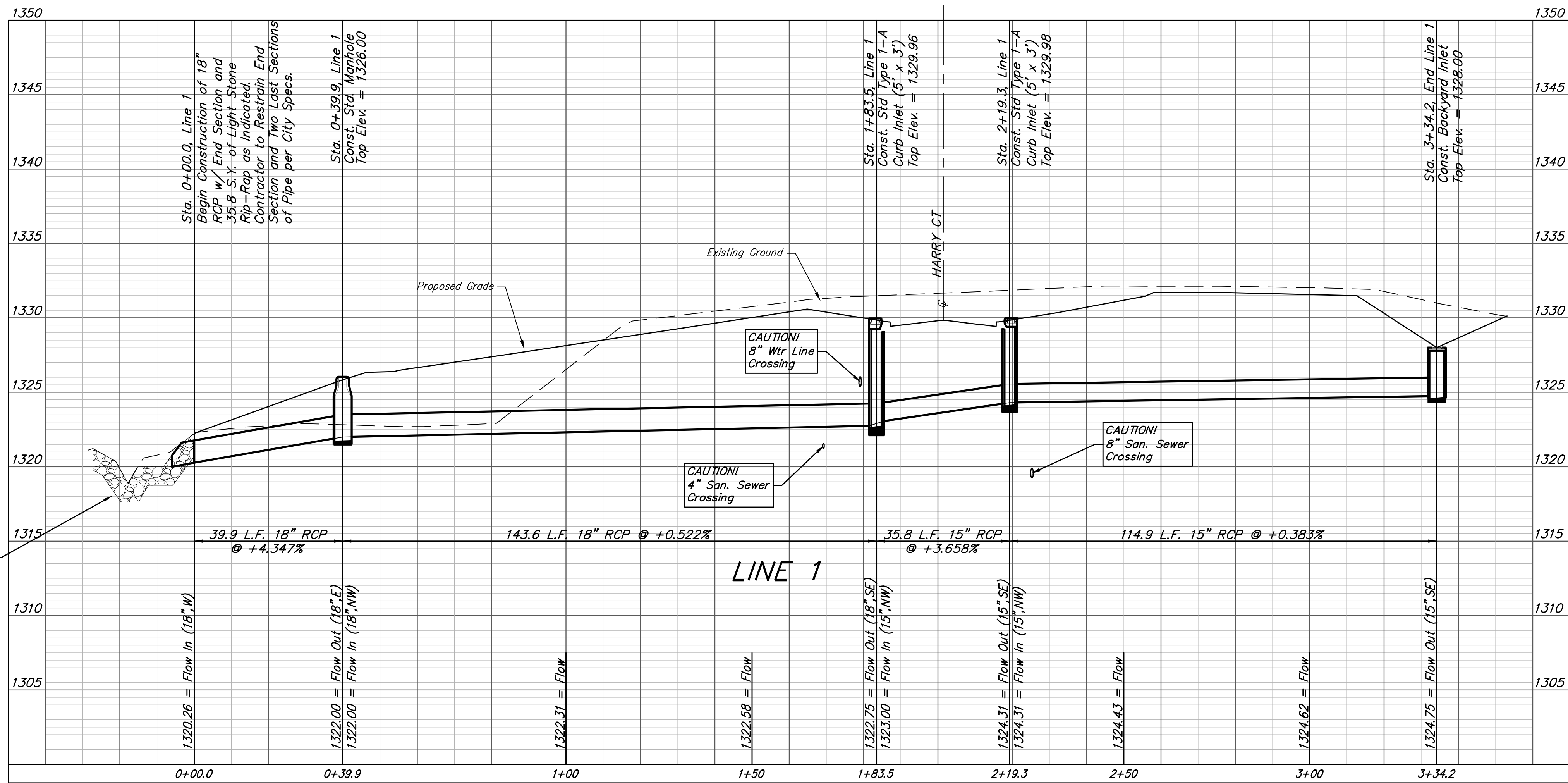
WILLOW CREEK EAST 2ND ADDITION

WILLOW CREEK EAST 4TH ADDITION

WILLOW CREEK EAST 4TH ADDITION



Existing trees which are in direct conflict with proposed new construction shall be removed by the Contractor ONLY with approval of the Engineer. Trees not in direct conflict with proposed new construction shall remain and be protected from damage. Cost shall be included in bid item "Site Clearing"



Contractor to Ensure Top of Rip-Rap Matches Flow Line of Channel to Avoid Channel Obstruction

		Willow Creek East 4th Addition	
		LINE 1	
		Stormwater Sewer Improvements	
<small>Baughman Company, P.A. 315 Ellis St. Wichita, KS 67211 P 316-262-7271 F 316-262-0149 ENGINEERING SURVEYING PLANNING LANDSCAPE ARCHITECTURE</small>			
PROJECT NUMBER 472-2020-085611	DESIGN AEG	DRAWN HW	DATE 10/05/20
REVISIONS:	APPROVED	SCALE Noted	SHEET
			9 OF 25