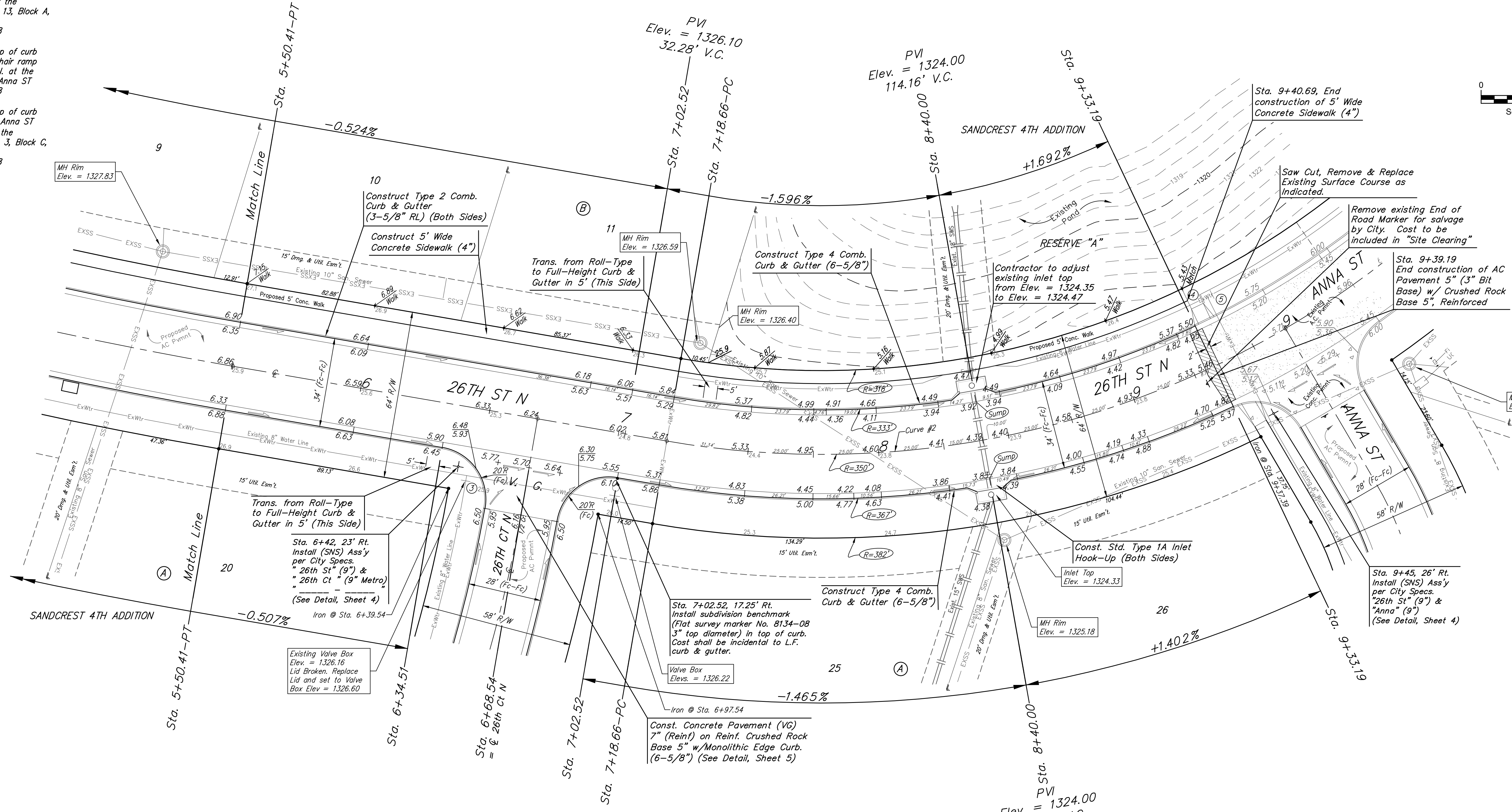
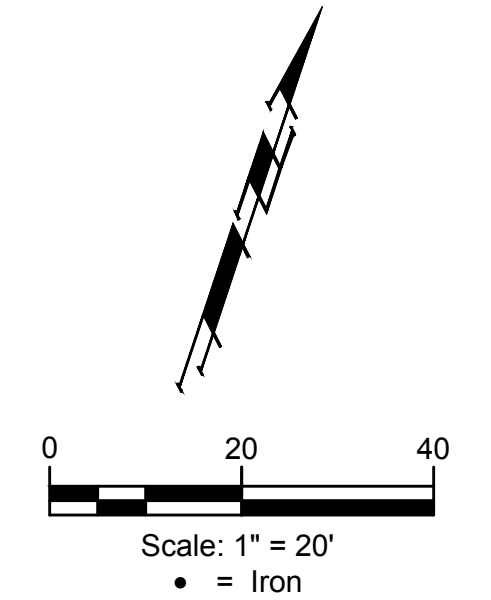


BENCHMARKS:
 BM #1 "□" cut in top of curb inlet face, south side of 26th ST N. 21' west & 12' north of the northeast corner of Lot 13, Block A, Sandcrest 4th Addn. Elev. = 1326.75 NAVD88

BM #2 "□" cut in top of curb northeast of the wheelchair ramp north side of 26th ST N. at the intersection of 26th & Anna ST. Elev. = 1325.34 NAVD88

BM #3 "□" cut in top of curb inlet face, East side of Anna ST 21' west & 5' north of the southwest corner of Lot 3, Block C, Sandcrest 4th Addn. Elev. = 1326.68 NAVD88



Curve #2
 Curve Data Based on Centerline
 Rad. = 350' Delta = 35.07° Tangent = 110.76'
 Arc = 214.53' L.C. = 211.19' Def./Ft. = 4.91124 Min.

Station	Arc	Face Chord Lengths		Defl.	Total Defl.
		8' Left	8' Right		
7+18.66	-	-	-	0'00"00"	0'00"00"
7+25.00	6.34'	5.89'	6.79'	0'31"08"	0'31"08"
7+50.00	25.00'	23.21'	26.78'	2'02"47"	2'33"55"
7+75.00	25.00'	23.21'	26.78'	2'02"47"	4'36"42"
8+00.00	25.00'	23.21'	26.78'	2'02"47"	6'39"29"
8+25.00	25.00'	23.21'	26.78'	2'02"47"	8'42"16"
8+50.00	25.00'	23.21'	26.78'	2'02"47"	10'45"03"
8+75.00	25.00'	23.21'	26.78'	2'02"46"	12'47'49"
9+00.00	25.00'	23.21'	26.78'	2'02"47"	14'50'36"
9+25.00	25.00'	23.21'	26.78'	2'02"47"	16'53'23"
9+33.19	8.19'	7.61'	8.78'	0'40"14"	17'33'37"

Roll type curb & gutter to be constructed on the pavement on this sheet.
 Top of curb elevation are given for full height curb.

Baughman Sandcrest 4th Addition - Phase IV
26TH ST NORTH
 Sta. 5+50.41 to Sta. 9+33.19

Baughman Company, P.A. 315 Ellis St. Wichita, KS 67211 P 316-262-7271 F 316-262-0149
 ENGINEERING | SURVEYING | PLANNING | LANDSCAPE ARCHITECTURE

PROJECT NUMBER: 472-85459 DESIGN: AEG DRAWN: JAK
 APPROVED: DATE: Nov. 2, 2020
 REVISIONS: SCALE: Noted SHEET: 6 OF 23

C:\Projects\Sandcrest 4th Addition_1801\F351\Engineering\Phase 4\STR_1910\415\STR PLANS.dwg