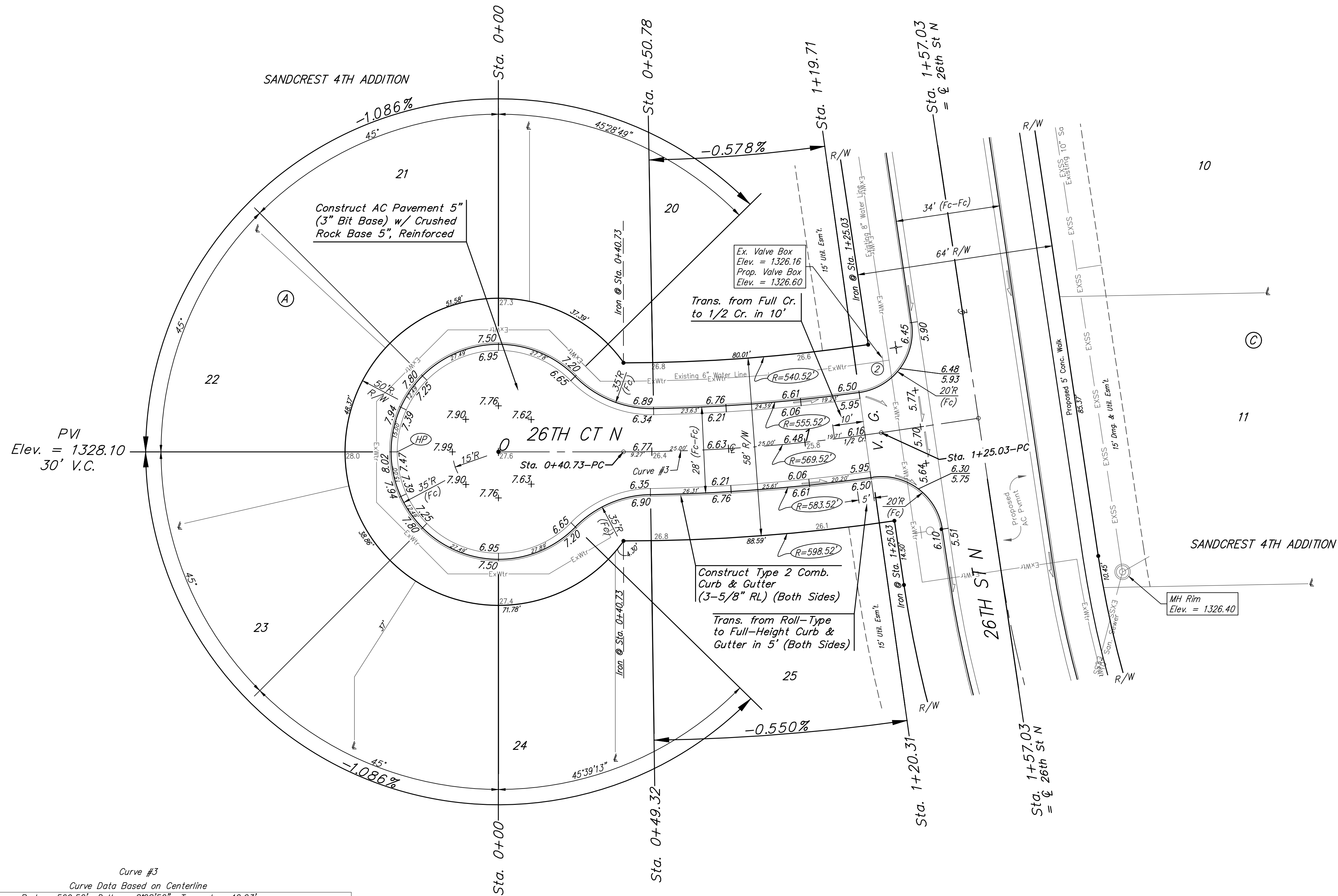
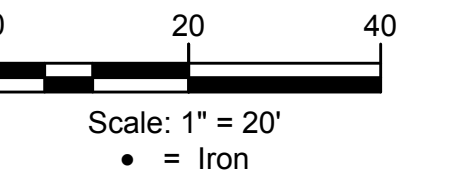


BENCHMARKS:
 BM #1 "□" cut in top of curb inlet face, south side of 26th ST N. 21' west & 12' north of the northeast corner of Lot 13, Block A, Sandcrest 4th Addn. Elev. = 1326.75 NAVD88

BM #2 "□" cut in top of curb northeast of the wheelchair ramp north side of 26th ST N. at the intersection of 26th & Anna ST. Elev. = 1325.34 NAVD88

BM #3 "□" cut in top of curb inlet face, East side of Anna ST 21' west & 5' north of the southwest corner of Lot 3, Block C, Sandcrest 4th Addn. Elev. = 1326.68 NAVD88



Curve #3
 Curve Data Based on Centerline
 Rad. = 569.52' Delta = 82°52' Tangent = 42.23'
 Arc = 84.30' L.C. = 84.23' Def./Ft. = 3.01819 Min.

| Station | Arc | Face Chord Lengths | | Defl. | Total Defl. |
|---------|--------|--------------------|----------|----------|-------------|
| | | 8' Left | 8' Right | | |
| 0+40.73 | - | - | - | 0'00'00" | 0'00'00" |
| 0+49.32 | 8.59' | 8.26' | 8.92' | 0'25'56" | 0'25'56" |
| 0+50.78 | 1.46' | 1.40' | 1.52' | 0'04'24" | 0'30'20" |
| 0+75.00 | 24.22' | 23.28' | 25.15' | 1'13'06" | 1'43'26" |
| 1+00.00 | 25.00' | 24.03' | 25.96' | 1'15'27" | 2'58'53" |
| 1+19.71 | 19.71' | 18.95' | 20.47' | 0'59'30" | 3'58'23" |
| 1+20.31 | 0.60' | 0.58' | 0.62' | 0'01'48" | 4'00'11" |
| 1+25.03 | 4.72' | 4.54' | 4.90' | 0'14'15" | 4'14'26" |

Roll type curb & gutter to be constructed on the pavement on this sheet.
 Top of curb elevation are given for full height curb.

| | | | |
|--|---------------|---|----------------------|
| | | Sandcrest 4th Addition - Phase IV | |
| | | 26TH ST NORTH Lots 20-25, Block A | |
| <small>Baughman Company, P.A. 315 Ellis St. Wichita, KS 67211 P 316-262-7271 F 316-262-0149 ENGINEERING SURVEYING PLANNING LANDSCAPE ARCHITECTURE</small> | | | |
| PROJECT NUMBER 472-85459 | DESIGN AEG | DRAWN JAK | DATE Nov. 2, 2020 |
| REVISIONS: | APPROVED | SCALE Noted | SHEET |
| | | 8 OF 23 | |