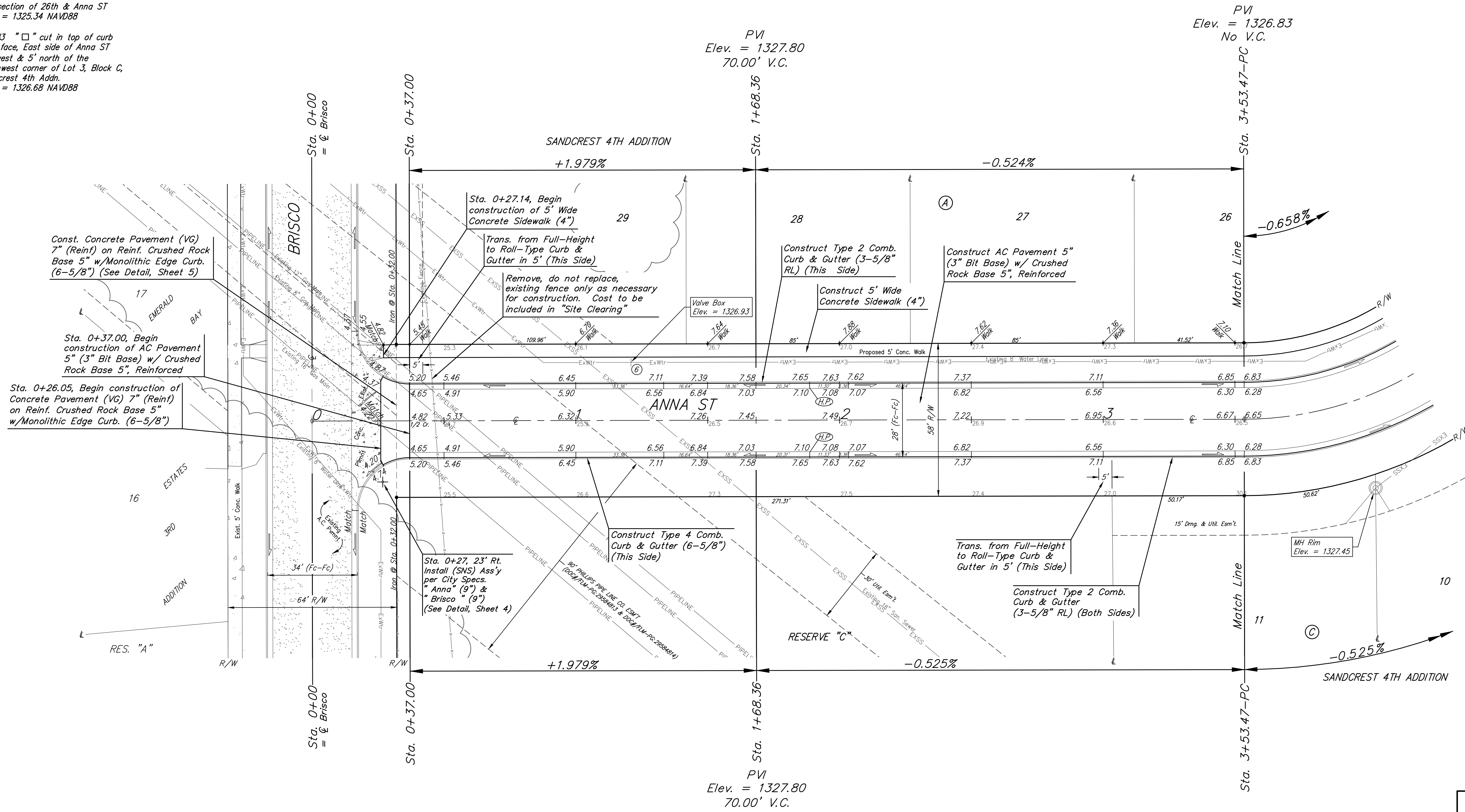
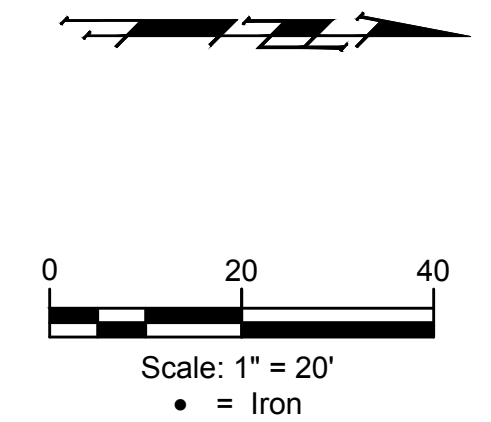


**BENCHMARKS:**  
 BM #1 "□" cut in top of curb inlet face, south side of 26th ST N. 21' west & 12' north of the northeast corner of Lot 13, Block A, Sandcrest 4th Addn. Elev. = 1326.75 NAVD88

BM #2 "□" cut in top of curb northeast of the wheelchair ramp north side of 26th ST N. at the intersection of 26th & Anna ST. Elev. = 1325.34 NAVD88

BM #3 "□" cut in top of curb inlet face, East side of Anna ST 21' west & 5' north of the southwest corner of Lot 3, Block C, Sandcrest 4th Addn. Elev. = 1326.68 NAVD88



- Construction work in the pipeline easement in Reserve "C", Anna St., and Lot 29, Blk A shall require pipeline coordination. Please see notes below.
- The Contractor shall contact Andres Martinez with Phillips 66 Pipeline, LLC at 316-655-5058 and Robert Clover with KPC Pipeline, LLC at 913-522-7501 a minimum of two weeks prior to construction.
  - The only vehicle/equipment crossing of the pipeline easement shall be at locations approved by the pipeline representatives.
  - Contractor shall install 5' of cover for temporary dirt crossings.
  - Lightweight construction equipment may be required for grading within the pipeline easement.
  - Contact pipeline representatives any time construction will occur within the pipeline easement.
  - No vibratory equipment shall be used within pipeline easement.

Roll type curb & gutter to be constructed on the pavement on this sheet. Top of curb elevation are given for full height curb.

		Sandcrest 4th Addition - Phase IV	
		<b>ANNA ST</b> Sta. 0+26.05 to Sta. 3+53.47	
<small>Baughman Company, P.A. 315 Ellis St. Wichita, KS 67211 P 316-262-7271 F 316-262-0149          ENGINEERING   SURVEYING   PLANNING   LANDSCAPE ARCHITECTURE</small>			
PROJECT NUMBER 472-85459	DESIGN AEG	DRAWN JAK	DATE Nov. 2, 2020
REVISIONS:	APPROVED	SCALE Noted	SHEET
			<b>9 OF 23</b>
<small>C:\Projects\Sandcrest 4th Addition_1801\F351\Engineering\Phase 4\STR_1910\H415\STR PLANS.dwg</small>			