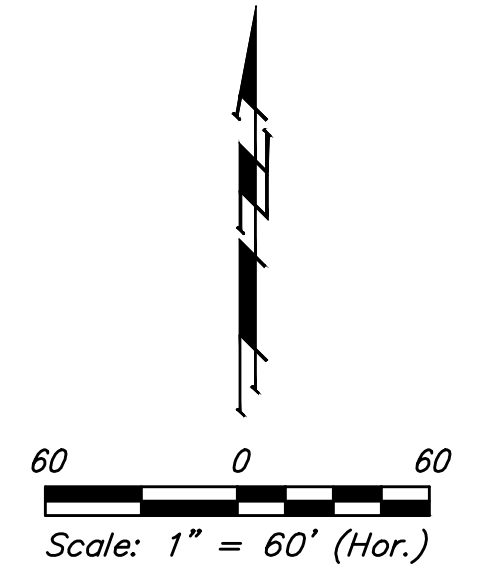


BENCHMARKS:
 disk adjacent to fire hydrant in SW
 corner of Lot 22 BLK A, Edgewater 3rd Addition
 Elev. = 1337.95 NGVD29

rail road spike in N face of power pole
 E of Lot 3 BLK A, Edgewater 4th Addition
 Elev. = 1336.93 NGVD29

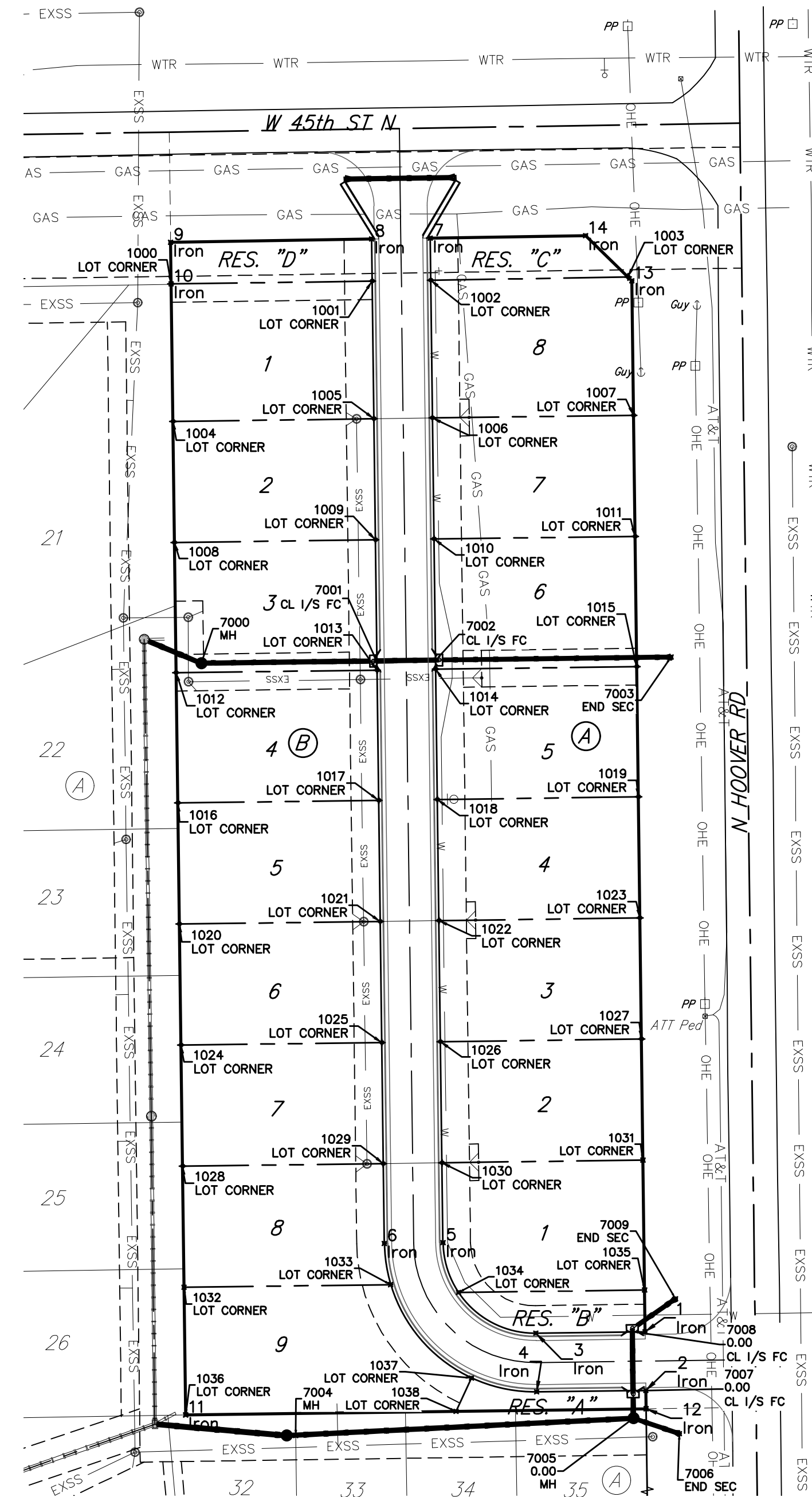


Coordinate Points			
Point #	Northing	Easting	Description
1	34,460.49	50,502.55	Iron
2	34,428.49	50,502.96	Iron
3	34,459.69	50,443.01	Iron
4	34,427.69	50,443.44	Iron
5	34,509.05	50,392.35	Iron
6	34,508.64	50,360.35	Iron
7	35,056.59	50,385.39	Iron
8	35,056.08	50,353.39	Iron
9	35,054.32	50,243.89	Iron
10	35,031.62	50,244.18	Iron
11	34,415.13	50,252.12	Iron
12	34,418.49	50,503.08	Iron
13	35,033.30	50,495.26	Iron
14	35,057.95	50,470.11	Iron

Coordinate Points			
Point #	Northing	Easting	Description
7000	34,824.85	50,260.58	MH
7001	34,826.08	50,356.15	CL 1/S FC
7002	34,826.58	50,388.48	CL 1/S FC
7003	34,828.22	50,516.65	END SEC
7004	34,403.93	50,312.09	MH
7005	34,413.32	50,496.15	MH
7006	34,404.90	50,521.23	END SEC
7007	34,428.23	50,495.96	CL 1/S FC
7008	34,460.56	50,495.55	CL 1/S FC
7009	34,478.42	50,519.07	END SEC

Coordinate Points			
Point #	Northing	Easting	Description
1000	35,031.62	50,244.18	LOT CORNER
1001	35,033.08	50,353.69	LOT CORNER
1002	35,033.60	50,385.68	LOT CORNER
1003	35,035.32	50,493.20	LOT CORNER
1004	34,956.68	50,245.14	LOT CORNER
1005	34,958.07	50,354.64	LOT CORNER
1006	34,958.57	50,386.63	LOT CORNER
1007	34,959.96	50,496.19	LOT CORNER
1008	34,890.68	50,245.99	LOT CORNER
1009	34,892.08	50,355.48	LOT CORNER
1010	34,892.58	50,387.47	LOT CORNER
1011	34,893.97	50,497.03	LOT CORNER
1012	34,819.69	50,246.91	LOT CORNER
1013	34,821.08	50,356.38	LOT CORNER
1014	34,821.58	50,388.38	LOT CORNER
1015	34,822.98	50,497.94	LOT CORNER
1016	34,748.70	50,247.82	LOT CORNER
1017	34,750.09	50,357.28	LOT CORNER
1018	34,750.59	50,388.28	LOT CORNER
1019	34,751.98	50,498.84	LOT CORNER

Coordinate Points			
Point #	Northing	Easting	Description
1020	34,682.70	50,248.67	LOT CORNER
1021	34,684.09	50,358.12	LOT CORNER
1022	34,684.59	50,390.12	LOT CORNER
1023	34,685.99	50,499.68	LOT CORNER
1024	34,616.71	50,249.52	LOT CORNER
1025	34,618.10	50,358.96	LOT CORNER
1026	34,618.60	50,390.96	LOT CORNER
1027	34,619.99	50,500.52	LOT CORNER
1028	34,550.71	50,250.37	LOT CORNER
1029	34,552.10	50,359.80	LOT CORNER
1030	34,552.60	50,391.79	LOT CORNER
1031	34,554.00	50,501.36	LOT CORNER
1032	34,484.72	50,251.22	LOT CORNER
1033	34,486.15	50,363.79	LOT CORNER
1034	34,481.90	50,400.77	LOT CORNER
1035	34,483.19	50,502.26	LOT CORNER
1036	34,415.13	50,252.12	LOT CORNER
1037	34,435.26	50,407.93	LOT CORNER
1038	34,417.10	50,398.54	LOT CORNER



	Edge Water 4th Addition	
	Coordinates Storm Water Sewer Improvements	
<small>Baughman Company, P.A. 315 Ellis St. Wichita, KS 67211 P 316-262-7271 F 316-262-0149 ENGINEERING SURVEYING PLANNING LANDSCAPE ARCHITECTURE</small>		
PROJECT NUMBER	DESIGN AEG	DRAWN CDW
REVISIONS:	APPROVED	DATE 11/16/20
	SCALE Noted	SHEET 14 OF 15