

GENERAL NOTES

1. CONTRACTOR WILL BE REQUIRED TO PROVIDE A MINIMUM ADVANCE NOTICE OF SEVENTY-TWO (72) HOURS TO UTILITY COMPANIES PRIOR TO STARTING ANY EXCAVATION AS FOLLOWS:
 KANSAS ONE-CALL 1-800-344-7233
 OR LOCAL (WICHITA) 687-2470

2. THE CONTRACTOR MUST NOTIFY THE FOLLOWING IN CASE OF EMERGENCY:

- COX COMMUNICATIONS (CABLE) 262-0661
- WESTAR (ELECTRIC) 383-8500
- KANSAS GAS SERVICE (GAS) 832-3101
- SBC (TELEPHONE) 800-870-8390
- CITY OF WICHITA WATER & SEWER 262-6000
- AQUILA (GAS) 800-303-0357

3. CONTRACTOR SHALL NOT START WORK ON THE PROJECT UNTIL THE PROJECT INSPECTOR IS ASSIGNED TO THE PROJECT AND IS PRESENT ON THE SITE. ANY WORK DONE WITHOUT INSPECTION WILL BE REQUIRED TO BE UNCOVERED FOR INSPECTION.

4. UNDERGROUND UTILITY SERVICE LINES AND OVERHEAD UTILITY POLE LINES ARE TO BE ADJUSTED AS NECESSARY BY OTHERS PRIOR TO CONSTRUCTION UNLESS THE PLANS SPECIFICALLY CALL FOR THEIR ADJUSTMENT BY THE CONTRACTOR. EXISTING UTILITIES AND THEIR LOCATION, AS SHOWN ON THE PLANS, REPRESENT THE BEST INFORMATION OBTAINABLE FOR DESIGN. LOCATION INFORMATION HAS BEEN OBTAINED FROM THE VARIOUS UTILITY COMPANIES AND IS EITHER FROM COMPANY RECORD DRAWINGS OR COMPANY PROVIDED FIELD LOCATIONS. THE CONTRACTOR WILL BE REQUIRED TO WORK AROUND EXISTING UTILITIES WITHIN THE RIGHT-OF-WAY WHICH DO NOT CONFLICT WITH PROPOSED CONSTRUCTION.

5. THE CONTRACTOR SHALL GIVE ALL PROPERTY OWNERS AND/OR TENANTS OF DEVELOPED PROPERTY DIRECTLY ABUTTING CONSTRUCTION OF THIS PROJECT A MINIMUM OF TEN (10) DAYS NOTICE PRIOR TO START OF CONSTRUCTION.

6. THE CONTRACTOR SHALL BE RESPONSIBLE FOR PRESERVING PROPERTY IRONS. THE CONTRACTOR WILL BE REQUIRED TO RE-ESTABLISH ANY PROPERTY IRONS WHICH ARE DAMAGED OR DESTROYED BY HIS CONSTRUCTION OPERATIONS. SUCH IRONS SHALL BE RE-ESTABLISHED BY A LICENSED LAND SURVEYOR IN ACCORDANCE WITH STATE LAWS. ALL COSTS FOR THIS WORK SHALL BE SUBSIDIARY TO SITE RESTORATION.

7. THE CONTRACTOR SHALL RESTORE ALL DITCHES, SWALES, ROAD SHOULDERS, ENTRANCES AND BANK LINES TO THEIR ORIGINAL SLOPES AND GRADES EXCEPT AS SHOWN OTHERWISE.

8. INTERURBAN TRAFFIC GENERATED OUTSIDE THE PROJECT AREA, AND LOCAL BUSINESS OR RESIDENTIAL TRAFFIC GENERATED WITHIN THE PROJECT AREA ARE TO BE CARRIED THROUGH CONSTRUCTION AS FURTHER PROMULGATED BY PROJECT SPECIAL PROVISIONS.

9. RUBBLE FROM THE REMOVAL OF MISCELLANEOUS STRUCTURES INCLUDING ANY TREES REMOVED AND TREE TRIMMINGS SHALL BE DISPOSED OF ON SITES TO BE PROVIDED BY THE CONTRACTOR. THESE SITES SHALL BE APPROVED BY THE ENGINEER AS TO SUITABILITY, APPEARANCE AND SITE LOCATION. LOCATIONS THAT, IN THE OPINION OF THE ENGINEER, WILL LEAVE AN UNSIGHTLY APPEARANCE WILL NOT BE APPROVED. ALL DISPOSAL SITES MUST BE APPROVED BY THE KANSAS DEPARTMENT OF HEALTH AND ENVIRONMENT. MATERIAL EITHER STOCKPILED OR DISPOSED OF IN A FLOOD PLAIN WOULD REQUIRE A KANSAS STATE BOARD OF AGRICULTURE PERMIT. ANY MATERIAL DUMPED IN WATERS OF THE UNITED STATES OR WETLANDS IS SUBJECT TO U.S. CORPS OF ENGINEERS PERMITTING REGULATIONS. ANY MATERIAL BURIED OR STOCKPILED BEYOND APPROVED CONSTRUCTION LIMITS WOULD REQUIRE ADDITIONAL ARCHAEOLOGICAL INVESTIGATIONS UNLESS BURIED IN A PREVIOUSLY APPROVED BORROW LOCATION.

10. ALL SEEDING TO BE COMPLETED WITH THE STORM WATER SEWER PROJECT.

11. TREE PROTECTION FENCE; SEE INDIVIDUAL GRADING SHEETS FOR TREE PROTECTION FENCE LOCATION. TOTAL QUANTITY OF TREE PROTECTION FENCE TO BE INSTALLED = 4,570 L.F.

SWD #320 - PONDS PHASE 1

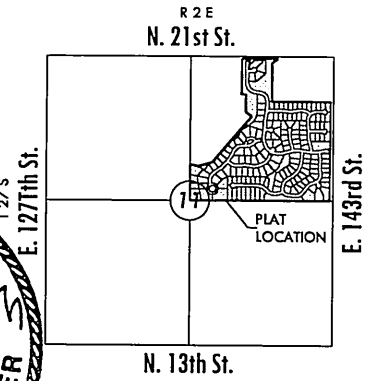
TO SERVE

KRUG SOUTH ADDITION

PROJECT NO. 468-84327

THE CITY OF WICHITA, KANSAS
 JAMES L. ARMOUR, CITY ENGINEER

OCA NO. 751440

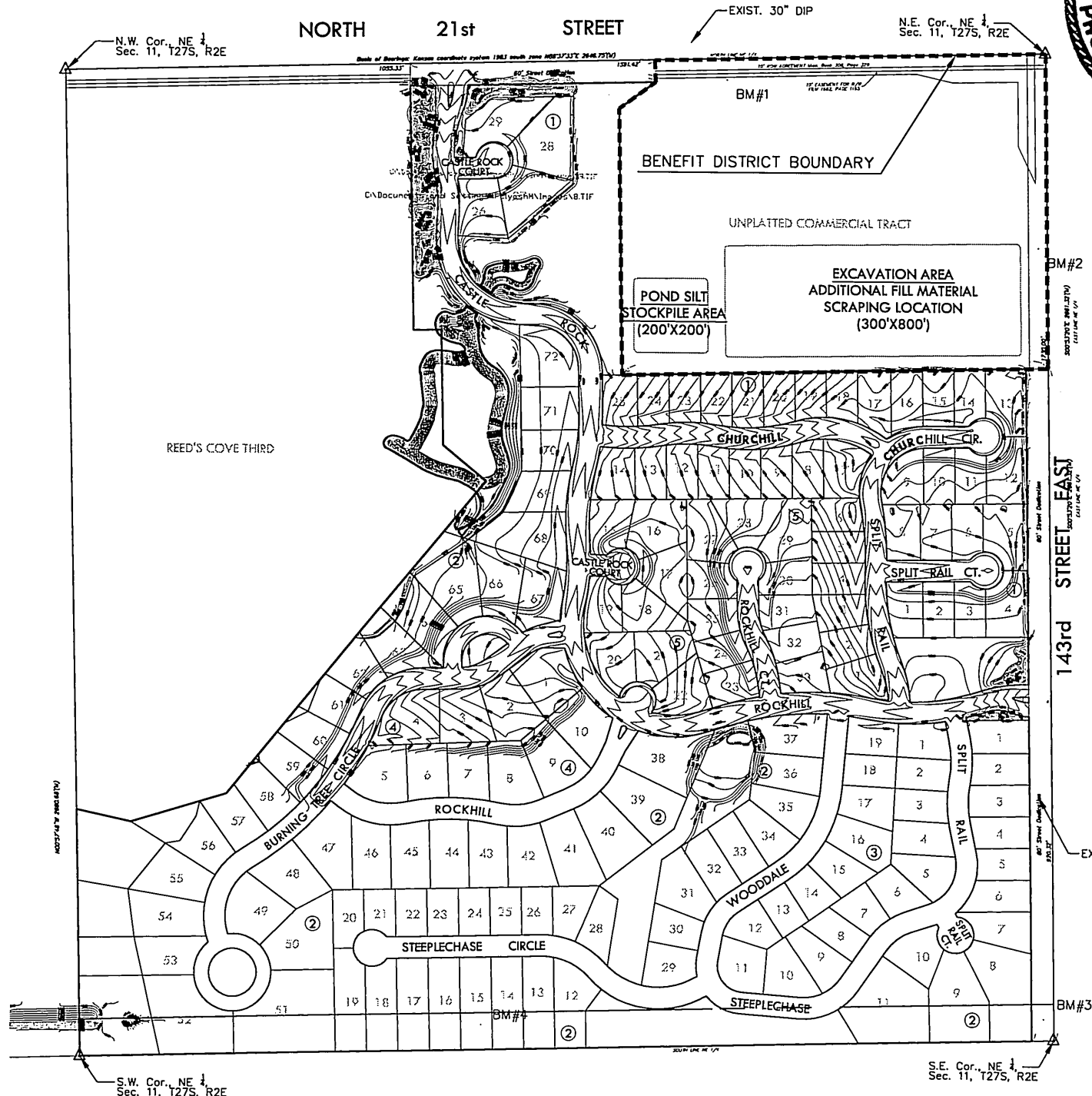


INDEX TO DRAWINGS

SHEET NO.	DESCRIPTION
1	TITLE SHEET
2	TREE PROTECTION/ GRADING DETAILS
3-6	GRADING PLAN
7	BUBBLE MAP
8-12	BMP DETAILS
13-14	PLAT

BENCHMARKS

- Datum BM [Symbol] at NE corner of inlet on S. side of Williamsgate over bridge in Hawthorne Addition.
Elev. = 1355.74 (NGVD 29)
- BM#1 RR spike in S. face of PP, 3rd PP W. of 143rd St. (79' from CL) S. side of 21st St. (49' from CL)
Elev. = 1362.17 (NGVD 29)
- BM#2 FH NE bolt w/ tag on top of flange, W. side of 143rd St. NW of drive. (23' from CL)
Elev. = 1382.81 (NGVD 29)
- BM#3 RR spike in N. face of HLP in N. pole, the first HLP w. of E. 143rd St.
Elev. = 1370.25 (NGVD 29)
- BM#4 RR spike in N. face of HLP in N. pole, the third HLP west of E. 143rd St.
Elev. = 1358.43 (NGVD 29)



EARTHWORK TABULATIONS:

	EXCAVATION	COMPACTION
SITE EARTHWORK	66,790 CY	58,080 CY
BERM - ALT. #1	7,500 CY	6,520 CY
BERM - ALT. #2	4,370 CY	3,800 CY

NOTE: 15% HAS BEEN ADDED TO EXCAVATION QUANTITIES TO ALLOW FOR COMPACTION AND HANDLING.
 ADDITIONAL FILL MATERIAL CAN BE SCRAPED FROM THE NOTED AREA ON THIS SHEET.

MKEC
 ENGINEERING
 CONSULTANTS, INC.

411 N. WEBB ROAD
 WICHITA, KS. 67206
 316-684-9600

GRADING PLANS
KRUG SOUTH ADDITION
PHASE 1

TITLE SHEET

SHEET TITLE
 468-84327
 PROJECT NUMBER

MLP / MLP / GJA
 DESIGNED / DRAWN / CHECKED

ISSUED
 May 2007

SHEET NO.
 1 of 14